

SITUATED IN

The State of Ohio, County of Muskingum,  
Township of Wayne and being part of Lot 13  
Hillview Subdivision (PB 9, Page 8A)

BASIS OF BEARING

Bearings are based on State Plane Grid Coordinates,  
NAD83, Ohio South, per GPS Observation.

REFERENCES

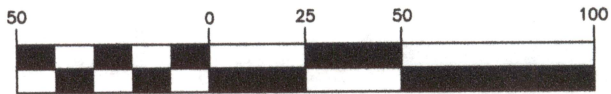
\* As Noted on Plat

[www.muskingumcountyauditor.org](http://www.muskingumcountyauditor.org)

[www.mceo.org](http://www.mceo.org)

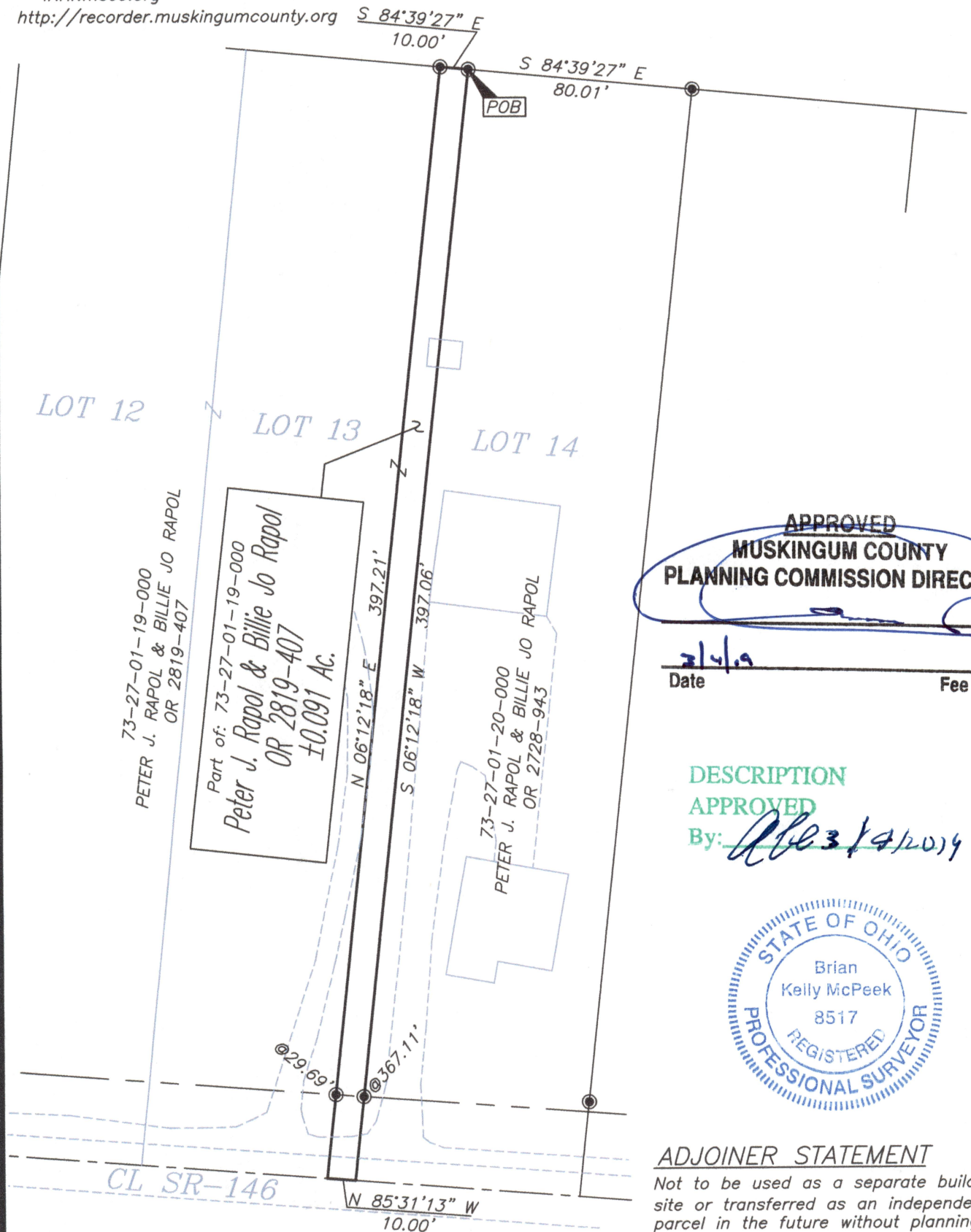
<http://recorder.muskingumcounty.org>

GRAPHIC SCALE



( IN FEET )

1 inch = 50 ft.



APPROVED  
MUSKINGUM COUNTY  
PLANNING COMMISSION DIRECTOR

Date

Fee Paid

DESCRIPTION

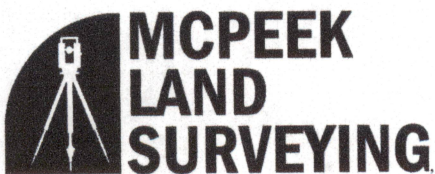
APPROVED

By: *3/1/2019*



ADJOINER STATEMENT

Not to be used as a separate building  
site or transferred as an independent  
parcel in the future without planning  
commission approval in accordance with  
applicable subdivision regulations.



[www.mcpeeklandsurveying.com](http://www.mcpeeklandsurveying.com)

email: [brian@mcpeeklandsurveying.com](mailto:brian@mcpeeklandsurveying.com)

340 Robin Hood Ln., \* Zanesville, Oh 43701 \* 740.704.6073

OFFICE COPY  
NOT RECORDABLE

Brian Kelly McPeek  
Reg. Surveyor No. 8517

Date

*3/1/19*

This plat was prepared by McPeek Land Surveying, LLC  
in accordance with Chapter 4733-37 of the Administrative Code,  
and is intended to be used for the legal transfer of the property  
described and does not intend to describe all or any easements of  
record, nor encroachments unless otherwise intended.