

## SITUATED IN

The State of Ohio, County of Muskingum, Township of Wayne,  
being part of the Southeast Quarter of Section 30, T13, R12.

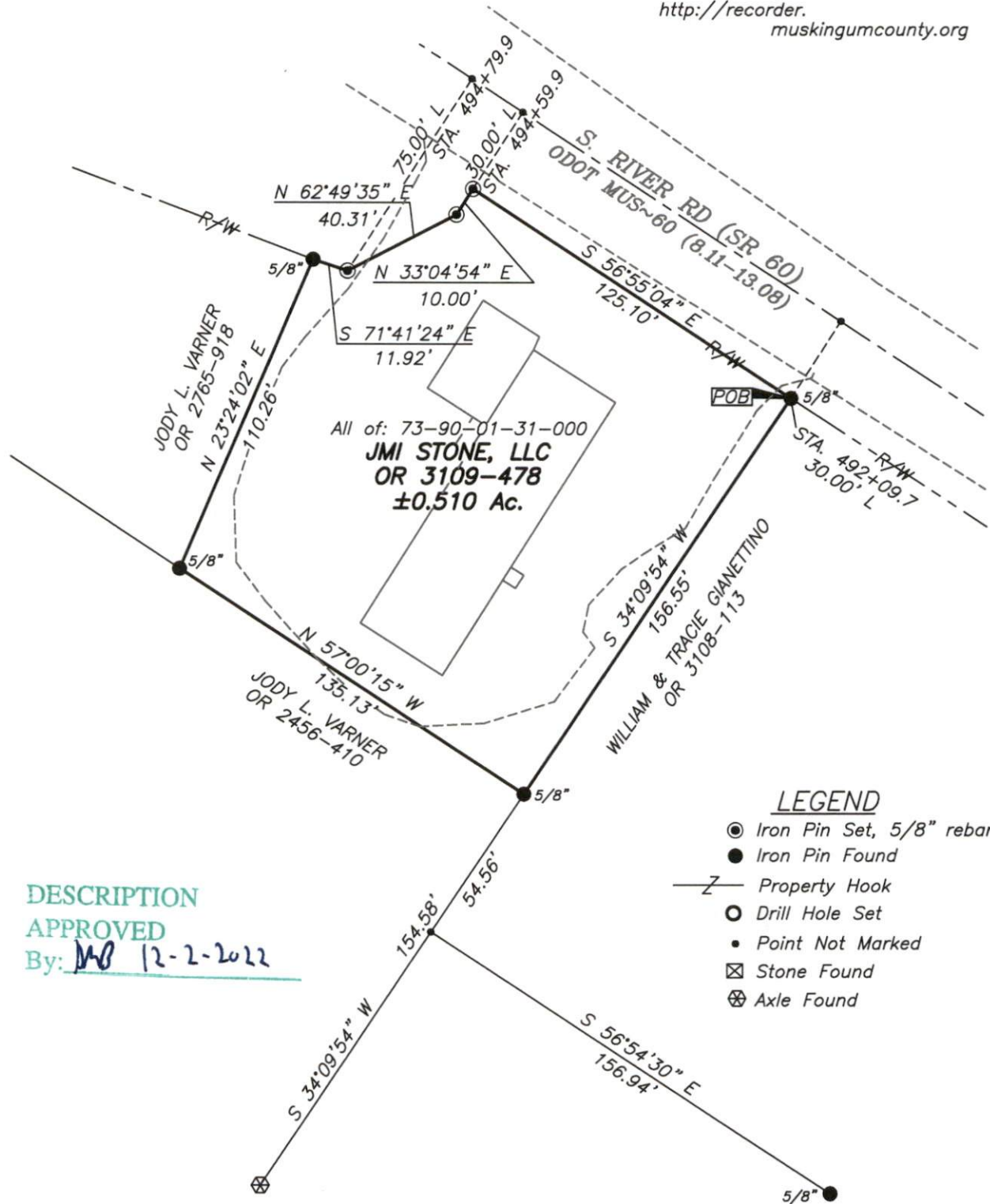
ReSurvey

## BASIS OF BEARING

Bearings are based on State Plane Grid Coordinates  
& Distances, NAD83, Ohio South, per GPS Observation.

## REFERENCES

\* As Noted on Plat  
[www.muskingumcountyauditor.org](http://www.muskingumcountyauditor.org)  
[www.mceo.org](http://www.mceo.org)  
<http://recorder.muskingumcounty.org>



## DESCRIPTION

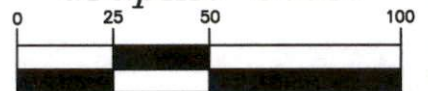
APPROVED

By: MB 12-2-2022

## LEGEND

- Iron Pin Set, 5/8" rebar
- Iron Pin Found
- Z— Property Hook
- Drill Hole Set
- Point Not Marked
- ⊠ Stone Found
- ⊗ Axle Found

## Graphic Scale



( IN FEET )

1 inch = 50 ft.

**OFFICE COPY  
NOT RECORDABLE**

Brian Kelly McPeck  
Reg. Surveyor No. 8517

This plat was prepared by McPeck Land Surveying, LLC  
in accordance with Chapter 4733-37 of the Administrative Code,  
and is intended to be used for the legal transfer of the property  
described and does not intend to describe all or any easements of  
record, nor encroachments unless otherwise intended.

**MCPECK  
LAND  
SURVEYING** LLC  
[www.mcpecklandsurveying.com](http://www.mcpecklandsurveying.com)  
email: [brian@mcpecklandsurveying.com](mailto:brian@mcpecklandsurveying.com)  
340 Robin Hood Ln., \* Zanesville, Oh 43701 \* 740.704.6073