

### SITUATED IN

The State of Ohio, County of Muskingum  
City of Zanesville, part of Lot No. 2 &  
Lot No. 3 of Dulty's Sub. (RP 1-129).

### BASIS OF BEARING

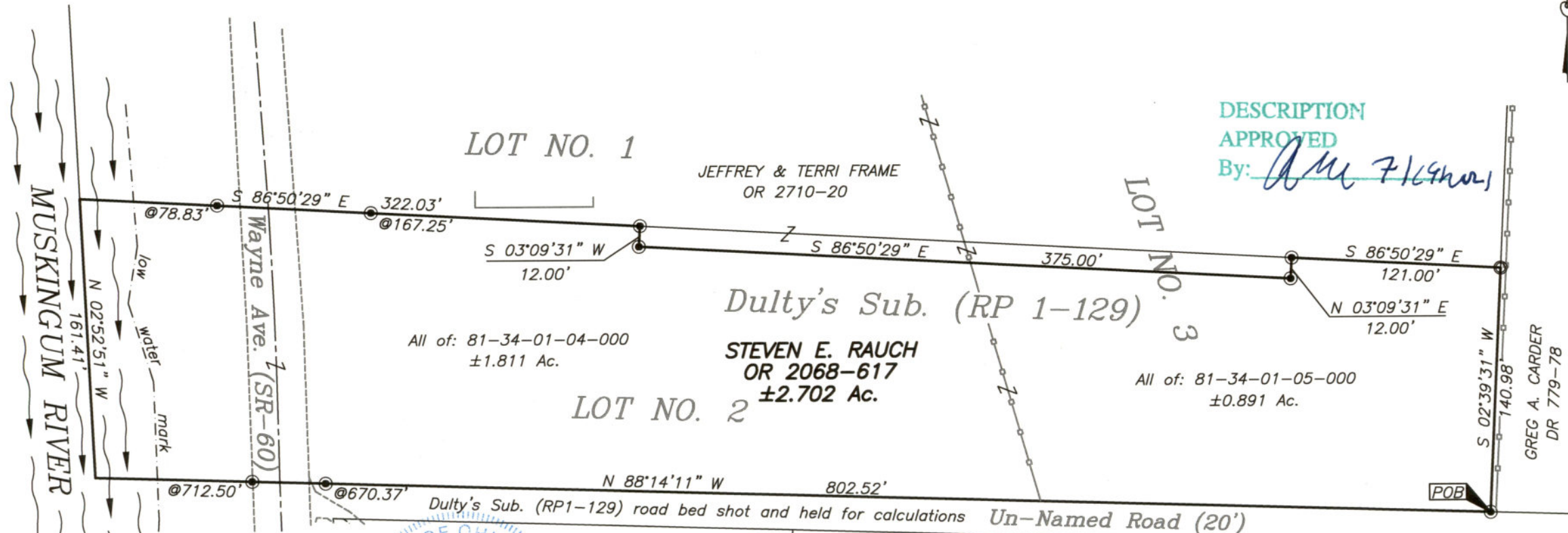
Bearings are based on State Plane Grid Coordinates,  
NAD83, Ohio South, per GPS Observation.

### REFERENCES

\* As Noted on Plat  
[www.muskingumcountyauditor.org](http://www.muskingumcountyauditor.org)  
[www.mceo.org](http://www.mceo.org)  
<http://recorder.muskingumcounty.org>

DESCRIPTION  
APPROVED

By: *Am 7/16/2012*



OFFICE COPY  
NOT RECORDABLE

Brian Kelly McPeck  
Reg. Surveyor No. 8517

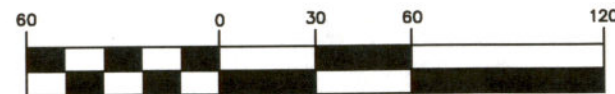
This plat was prepared by McPeck Land Surveying, LLC  
in accordance with Chapter 4733-37 of the Administrative Code,  
and is intended to be used for the legal transfer of the property  
described and does not intend to describe all or any easements  
of record, nor encroachments unless otherwise intended.



### LEGEND

- Iron Pin Set, 5/8" rebar
- Iron Pin Found
- Axle Found
- Z— Property Hook
- ⊠ Stone Found
- Pipe Found
- △ Spike Set

### GRAPHIC SCALE



( IN FEET )  
1 inch = 60 ft.



[www.mcpeeklandsurveying.com](http://www.mcpeeklandsurveying.com)  
email: [brian@mcpeeklandsurveying.com](mailto:brian@mcpeeklandsurveying.com)  
340 Robin Hood Ln., \* Zanesville, Oh 43701 \* 740.704.6073