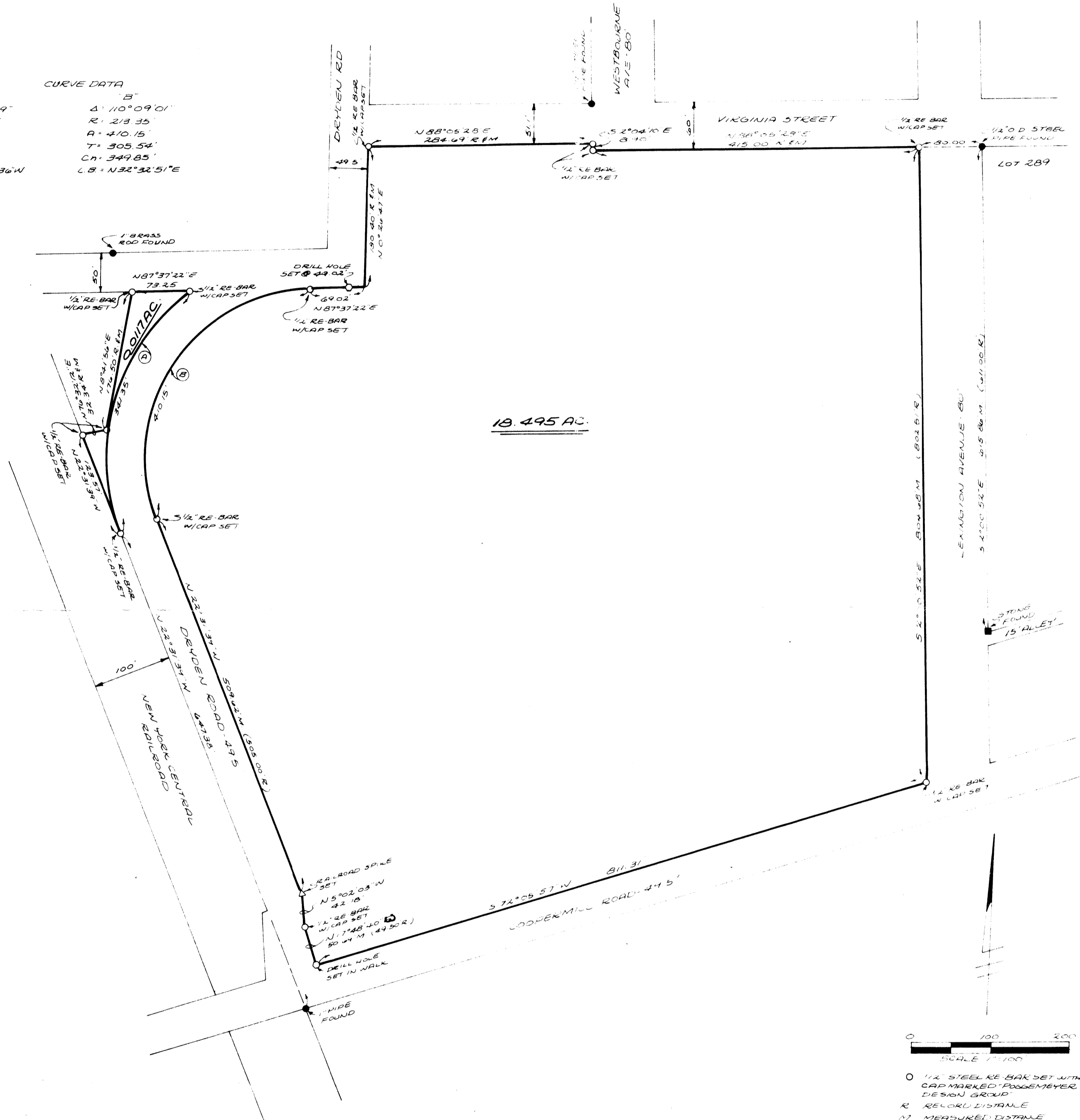


MAP OF SURVEY
 18.495 AC. PARCEL
 ± 0.117 AC. PARCEL
 PART OF THE FIFTH WARD
 CITY OF ZANESVILLE, OHIO

CURVE DATA
 A
 $\Delta = 78^{\circ}24'29"$
 $R = 262.85'$
 $A = 341.35'$
 $T = 194.54'$
 $CA = 377.87'$
 $CB = 514.4036W$
 B
 $\Delta = 110^{\circ}09'01"$
 $R = 218.35'$
 $A = 410.15'$
 $T = 305.54'$
 $CA = 349.85'$
 $CB = N32^{\circ}32'51"E$



0 100 200
 SCALE 1"=100'
 O 1/2" STEEL RE BAR SET WITH CAP MARKED "POGGEMEYER DESIGN GROUP"
 R RECALCULATED DISTANCE
 M MEASURED DISTANCE

Any information or data on this drawing is not intended to be suitable for reuse by any person, firm or corporation or any others on extensions of this project or for any use on any other project. Any reuse without written verification and adaptation by the Engineer, Architect or Surveyor for the specific purpose intended will be at the users sole risk and without liability or legal exposure to the Engineer, Architect or Surveyor.

SURVEYOR'S CERTIFICATION-We hereby certify that this was prepared from a survey made by the office of Poggemeyer Design Group, Inc., Engineers-Architects-Surveyors, and is correct to the best of my knowledge and belief.

All distances are in feet and bearings thereof. Bearings are based on an assumed meridian and are based on angular measurement only.

Robert A. Poggemeyer
 Robert A. Poggemeyer, P.E., 76511
 Date: 9-5-86

POGGEMEYER DESIGN GROUP
 ENGINEERS-ARCHITECTS-SURVEYORS
 3791 WALES AVE. N.W. SUITE A
 MASSILLON, OHIO 44646
 PHONE: (216)832-9715

DESCRIPTION APPROVED
 for Auditor's transfer
 By *J. J. Gandy*
 9-5-86