

# SITUATED IN

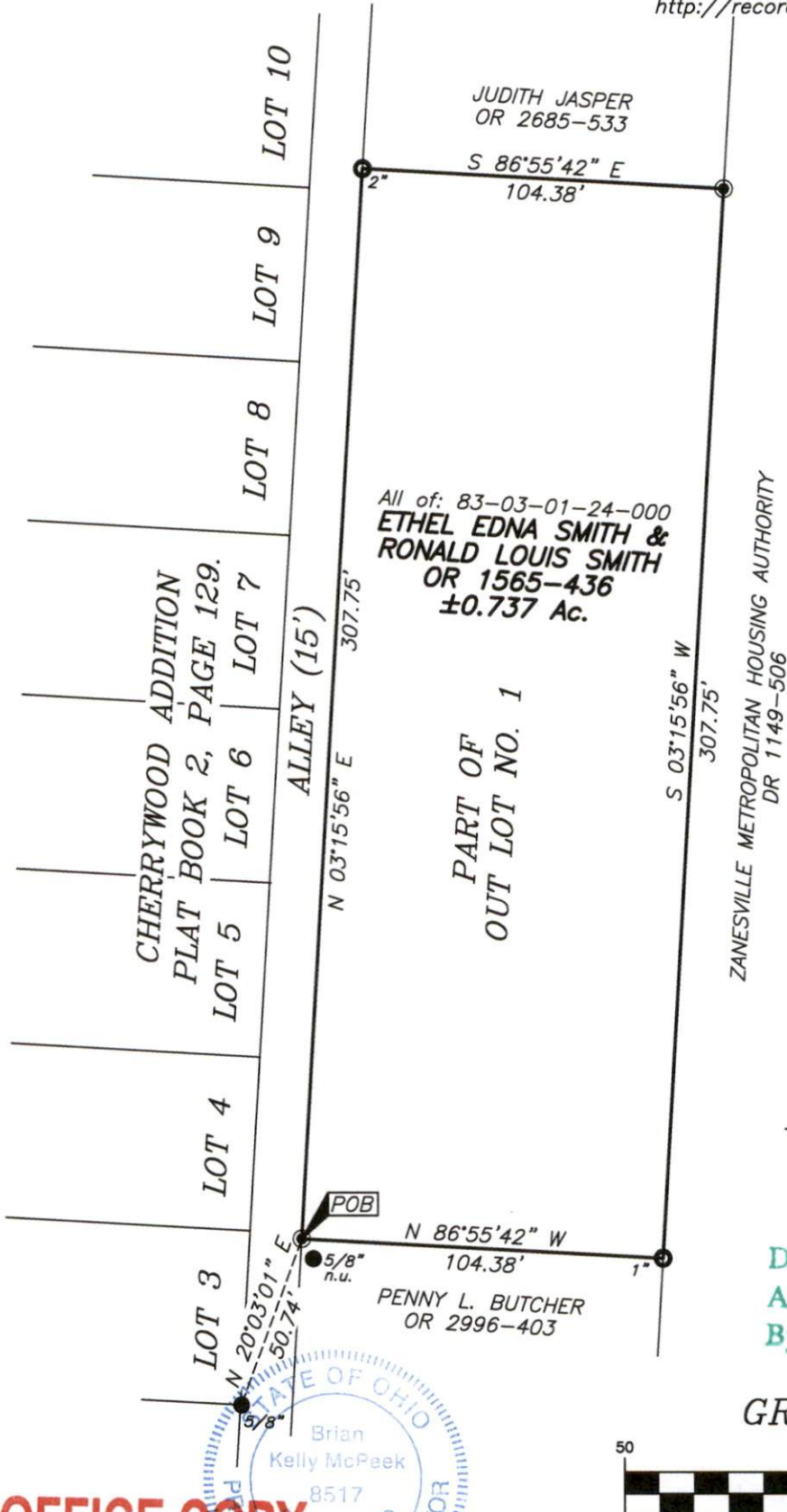
The State of Ohio, County of Muskingum,  
City of Zanesville and being part of Out Lot No. 1,  
Cherrywood Addition (Plat Book 2, Page 129).

## BASIS OF BEARING

Bearings are based on State Plane Grid Coordinates,  
NAD83, Ohio South, per GPS Observation.

## REFERENCES

\* As Noted on Plat  
[www.muskingumcountyauditor.org](http://www.muskingumcountyauditor.org)  
[www.mceo.org](http://www.mceo.org)  
<http://recorder.muskingumcounty.org>



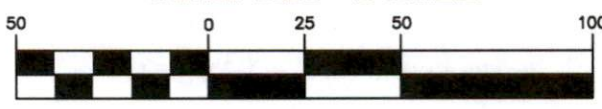
## LEGEND

- Iron Pin Set (8517)
- Iron Pin Found
- Pipe Found w/cap
- ⊠ Concrete Monument (x)
- Property Hook
- Axle Found

## DESCRIPTION

APPROVED  
By: *[Signature]*

## GRAPHIC SCALE



( IN FEET )

1 inch = 50 ft.

**OFFICE COPY  
NOT RECORDABLE**

Brian Kelly McPeek  
Reg. Surveyor No. 8517

This plat was prepared by McPeek Land Surveying, LLC  
in accordance with Chapter 4733-37 of the Administrative Code,  
and is intended to be used for the legal transfer of the property  
described and does not intend to describe all or any easements of  
record, nor encroachments unless otherwise intended.

**MCPEEK  
LAND  
SURVEYING**  
LLC  
[www.mcpeeklandsurveying.com](http://www.mcpeeklandsurveying.com)  
email: [brian@mcpeeklandsurveying.com](mailto:brian@mcpeeklandsurveying.com)  
1705 East Pike, \* Zanesville, Oh 43701 \* 740.704.6073