

83-11-04-10-000 A

# SITUATED IN

The State of Ohio, County of Muskingum  
City of Zanesville, Section 12, T16, R14.

## BASIS OF BEARING

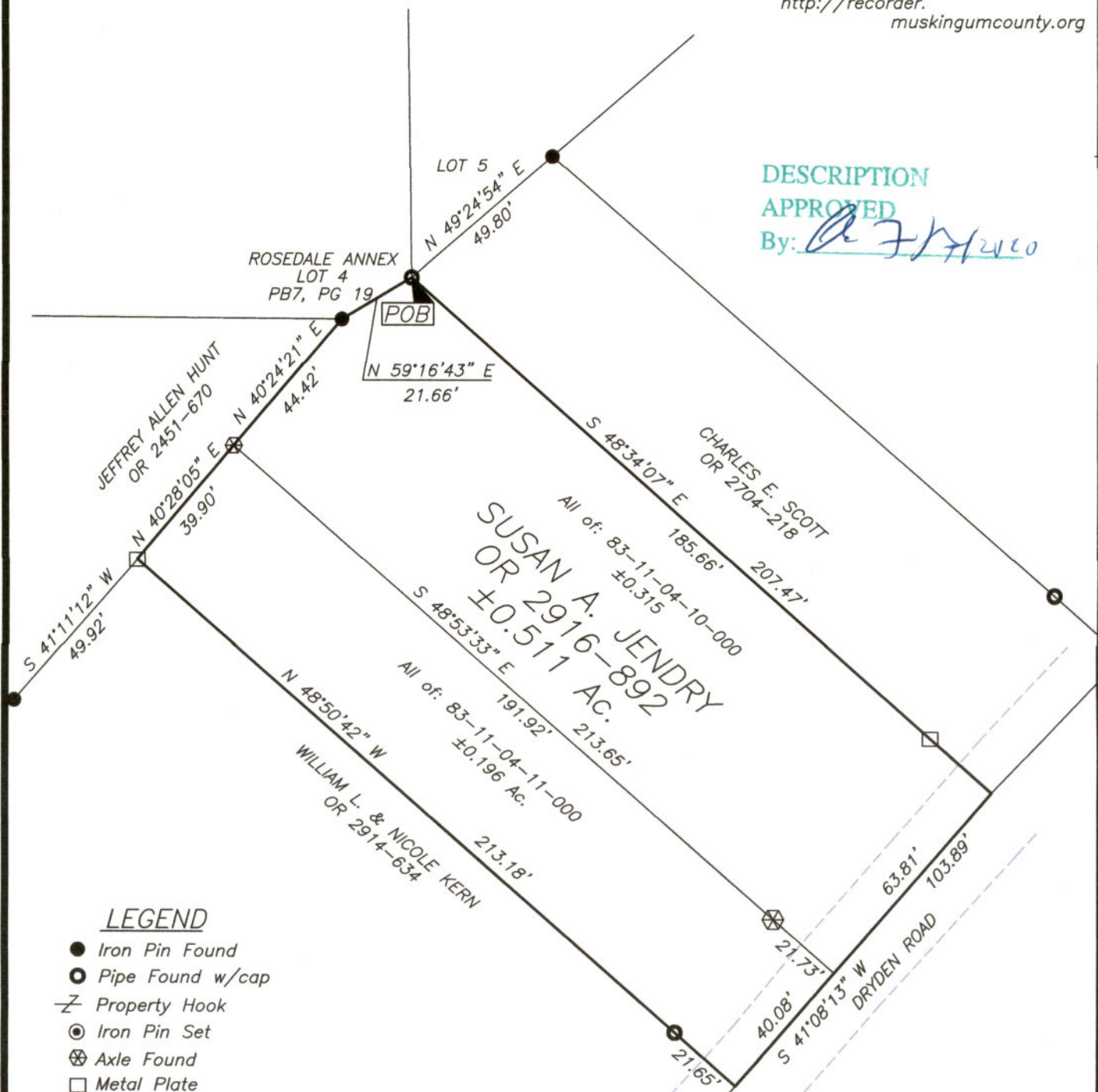
Bearings are based on State Plane Grid Coordinates,  
NAD83, Ohio South, per GPS Observation.

## REFERENCES

\* As Noted on Plat  
[www.muskingumcountyauditor.org](http://www.muskingumcountyauditor.org)  
[www.mceo.org](http://www.mceo.org)  
<http://recorder.muskingumcounty.org>

## DESCRIPTION APPROVED

By: *[Signature]* 7/24/20



## LEGEND

- Iron Pin Found
- Pipe Found w/cap
- ⌵ Property Hook
- ⊙ Iron Pin Set
- ⊗ Axle Found
- Metal Plate

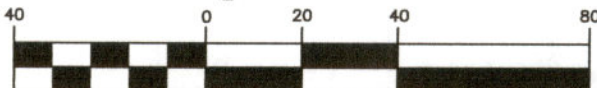


**OFFICE COPY  
NOT RECORDABLE**

Brian Kelly McPeck  
Reg. Surveyor No. 8517

This plat was prepared by McPeck Land Surveying, LLC in accordance with Chapter 4733-37 of the Administrative Code, and is intended to be used for the legal transfer of the property described and does not intend to describe all or any easements of record, nor encroachments unless otherwise intended.

## Graphic Scale



( IN FEET )  
1 inch = 40 ft.



**MCPECK  
LAND  
SURVEYING** LLC  
[www.mcpeeklandsurveying.com](http://www.mcpeeklandsurveying.com)  
email: [brian@mcpeeklandsurveying.com](mailto:brian@mcpeeklandsurveying.com)  
340 Robin Hood Ln., \* Zanesville, Oh 43701 \* 740.704.6073