

83-27-05-13-000 A

SITUATED IN

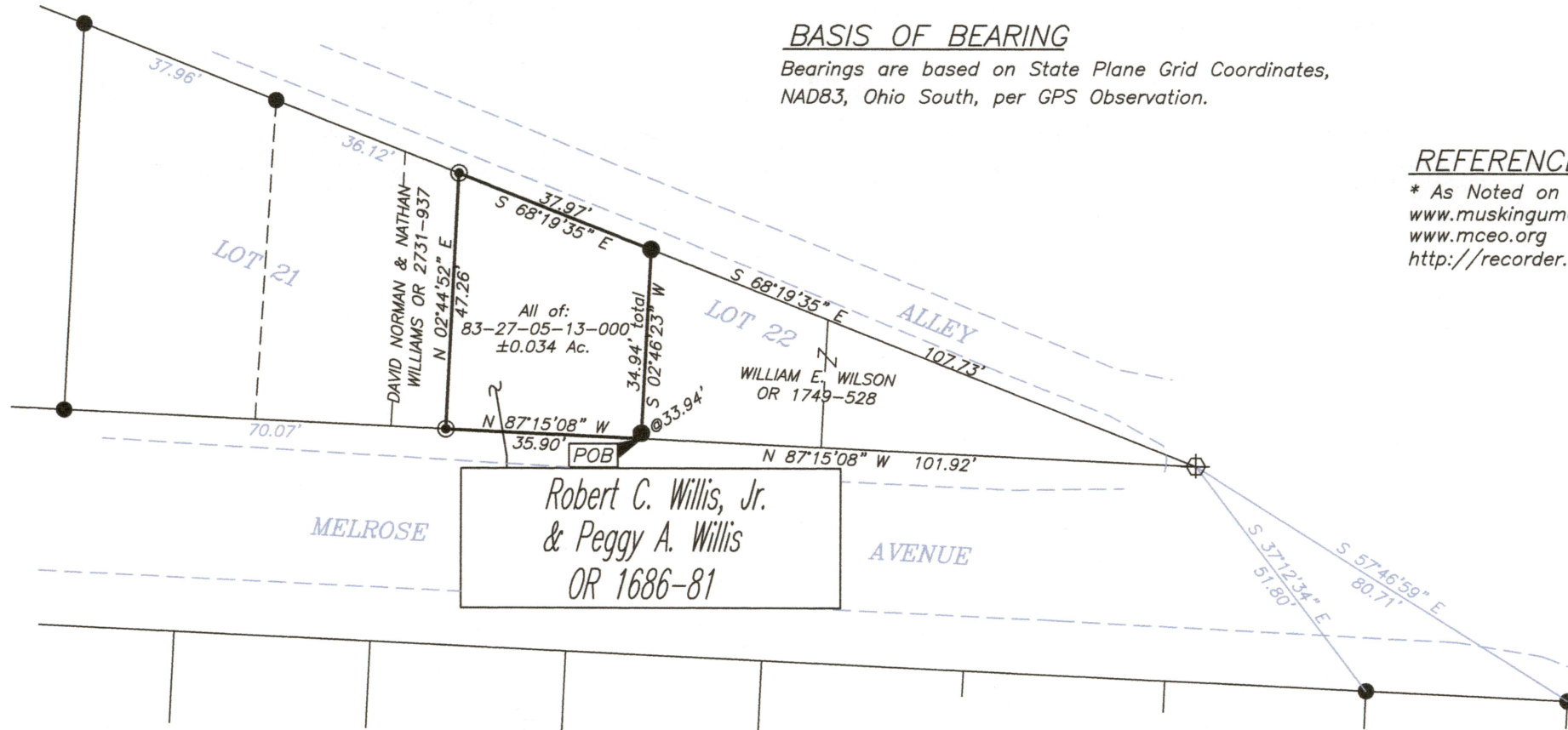
The State of Ohio, County of Muskingum
City of Zanesville, being part of Lot 22
of Hissey Place (PB 4, Page 25).

BASIS OF BEARING

Bearings are based on State Plane Grid Coordinates,
NAD83, Ohio South, per GPS Observation.

REFERENCES

* As Noted on Plat
www.muskingumcountyauditor.org
www.mceo.org
<http://recorder.muskingumcounty.org>



LEGEND

- Iron Pin Set, 5/8" rebar
- Iron Pin Found
- Axle Found
- Z— Property Hook
- ⊠ Stone Found
- Pipe Found
- ⊕ Drill Hole Set

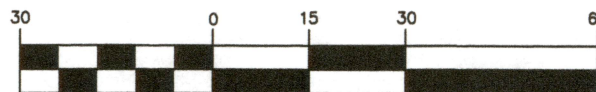
DESCRIPTION

APPROVED

By: *APL 6/14/20*

This plat was prepared by McPeck Land Surveying, LLC
in accordance with Chapter 4733-37 of the Administrative Code,
and is intended to be used for the legal transfer of the property
described and does not intend to describe all or any easements of
record, nor encroachments unless otherwise intended.

GRAPHIC SCALE



(IN FEET)
1 inch = 30 ft.



**OFFICE COPY
NOT RECORDABLE** 6/2/20
Date



www.mcpeeklandsurveying.com
email: brian@mcpeeklandsurveying.com
340 Robin Hood Ln., * Zanesville, Oh 43701 * 740.704.6073