



SITUATED IN

The State of Ohio, County of Muskingum
City of Zanesville, and being a part of Lot 9
& Lot 10 in the Olympus Sub., DB "K", Pg. 551..

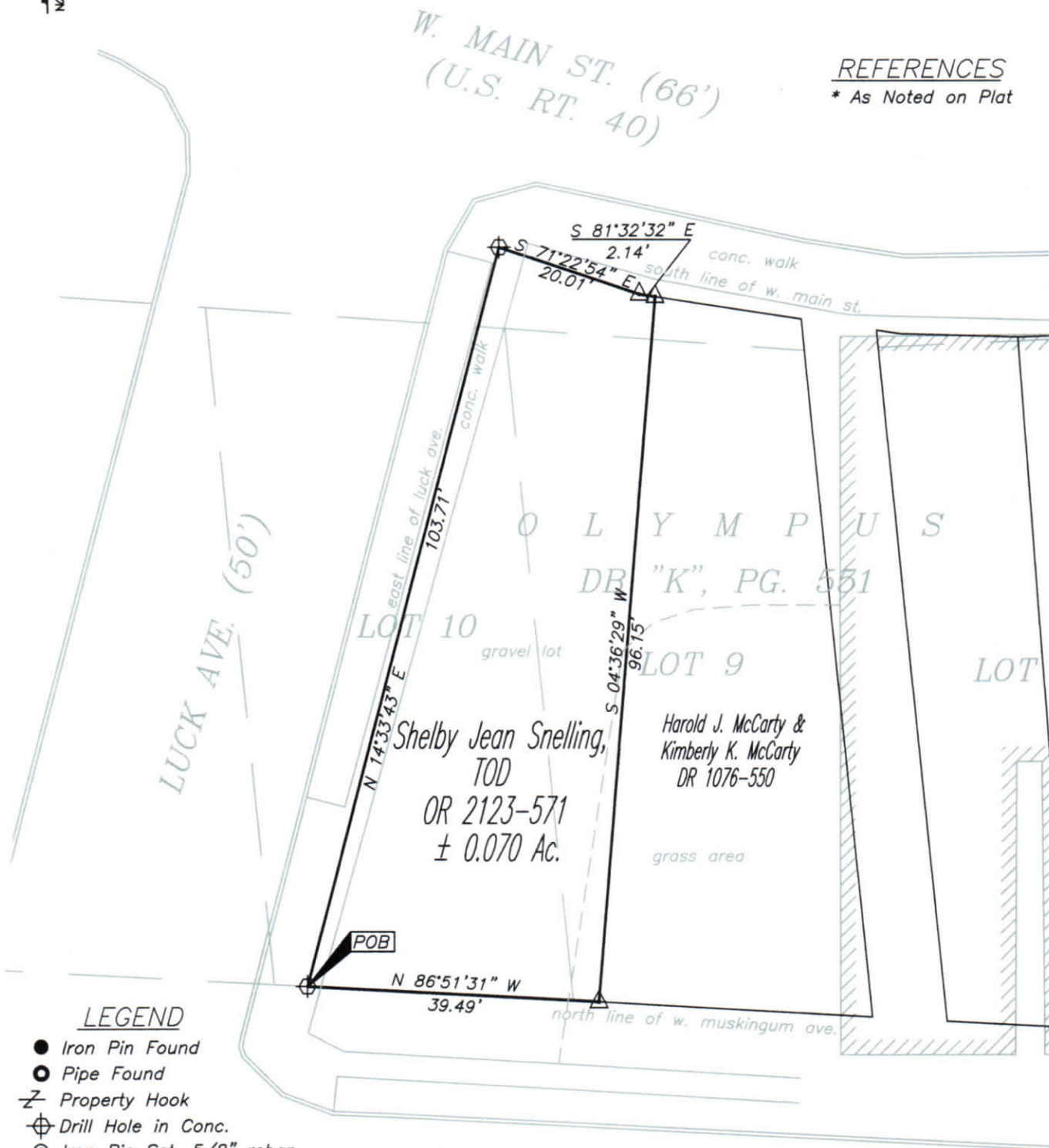
RE-SURVEY

BASIS OF BEARING

Bearings are based on State Plane Grid Coordinates,
NAD83, Ohio South, per GPS Observation.

REFERENCES

* As Noted on Plat



LEGEND

- Iron Pin Found
- Pipe Found
- ⌵ Property Hook
- ⊕ Drill Hole in Conc.
- ⊙ Iron Pin Set, 5/8" rebar
- △ Railroad Spike Set

W. MUSKINGUM AVE. (66')

DESCRIPTION
APPROVED

By: A. Swinchart 3/20/15

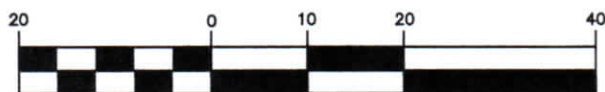
PARCEL NO.

All of: 83-27-06-15-000(+/- 0.070 Ac.)

OFFICE COPY

NOT RECORDABLE
Brian Kelly McPeck
Reg. Surveyor No. 8517
Date 3/20/15

GRAPHIC SCALE



(IN FEET)
1 inch = 20 ft.



**MCPECK
LAND
SURVEYING**

www.mcpeeklandsurveying.com
email: brian@mcpeeklandsurveying.com
340 Robin Hood Ln., * Zanesville, Oh 43701 * 740.704.6073

