

SURVEY DESCRIPTION
FOR
J O K COMPANY

PARCEL 2

PART OF AUDITORS PARCEL
83-33-01-01-000 (3.14 Acres)

Situated in the third ward, City of Zanesville, Muskingum County, Ohio. Being part of the lands of J O K Company conveyed in deed book 1140 page 385 of the Muskingum County Deed records and being more particularly described as follows;

Commencing at a found iron pin marking the intersection of the S. line of Lee Street and the East line of Pearl Street; thence, S.63°37'45"E. a distance of 220.00 feet along the South line of Lee Street to a point, BEING THE POINT OF BEGINNING;

Thence, S.63°37'45"E. a distance of 255.57 feet along the South line of Lee Street to a point on the Northwest corner of the lands of the lands, now or formerly, owned by RORC Enterprises, Inc. (1158/662);

Thence, S.26°20'47"W. a distance of 170.33 feet along the West line of said RORC lands to a set rebar, passing a found iron pin at 17.10 feet;

Thence, N.78°57'35"W. a distance of 95.05 feet through the lands of J O K Company (1140/385) to a set rebar;

Thence, S.23°59'44"W. a distance of 142.08 feet through said J O K lands to a set rebar on the North line of the lands, now or formerly, owned by Farm Supply Center, Inc. (1090/415);

Thence, N.81°03'42"W. a distance of 253.42 feet along said Farm Supply lands and along said railroad bed to a set rebar;

Thence, N.51°11'48"W. a distance of 233.51 feet along the south line of the lands of J O K Company lands (1140/385) to a set rebar on the Easterly line of Pearl Street;

Thence, N.38°47'19"E. a distance of 171.78 feet along said pearl street to a found railroad spike on the Southwest corner of the lands, now or formerly, owned by f.w. Englefield, IV and Benjamin Englefield (1143/847);

Thence, S.63°37'27"E. a distance of 220.01 feet along said Englefield lands to a set rebar;

Thence, N.38°47'02"E. a distance of 200.00 feet along said Englefield lands to the point of beginning, passing a found iron pin at 199.90 feet.

The above described parcel contains 3.14 acres, more or less, and is subject to all legal easements, railroad lease's and right of ways. All set rebars are 5/8" x 30" rebars with plastic I.D. caps. North is based upon an assumed meridian.

Description was prepared from an actual field survey by Bowman Surveying, Stephen M. Bowman, P.S.#7135. July 11, 2006.

APPROVED FOR CLOSURE

ASB 7/17/2006

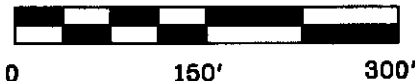
EXEMPT FROM
PLANNING COMMISSION

ASB 7/17/2006

OFFICE COPY
NOT RECORDABLE

NORTH IS BASED UPON
AN ASSUMED MERIDIAN

SCALE 1" = 150'



SURVEY PLAT FOR J O K COMPANY

SITUATED IN THE THIRD WARD, CITY OF ZANESVILLE, MUSKINGUM COUNTY, OHIO.

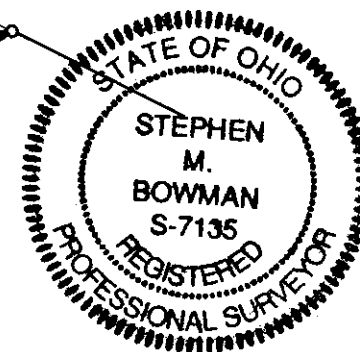
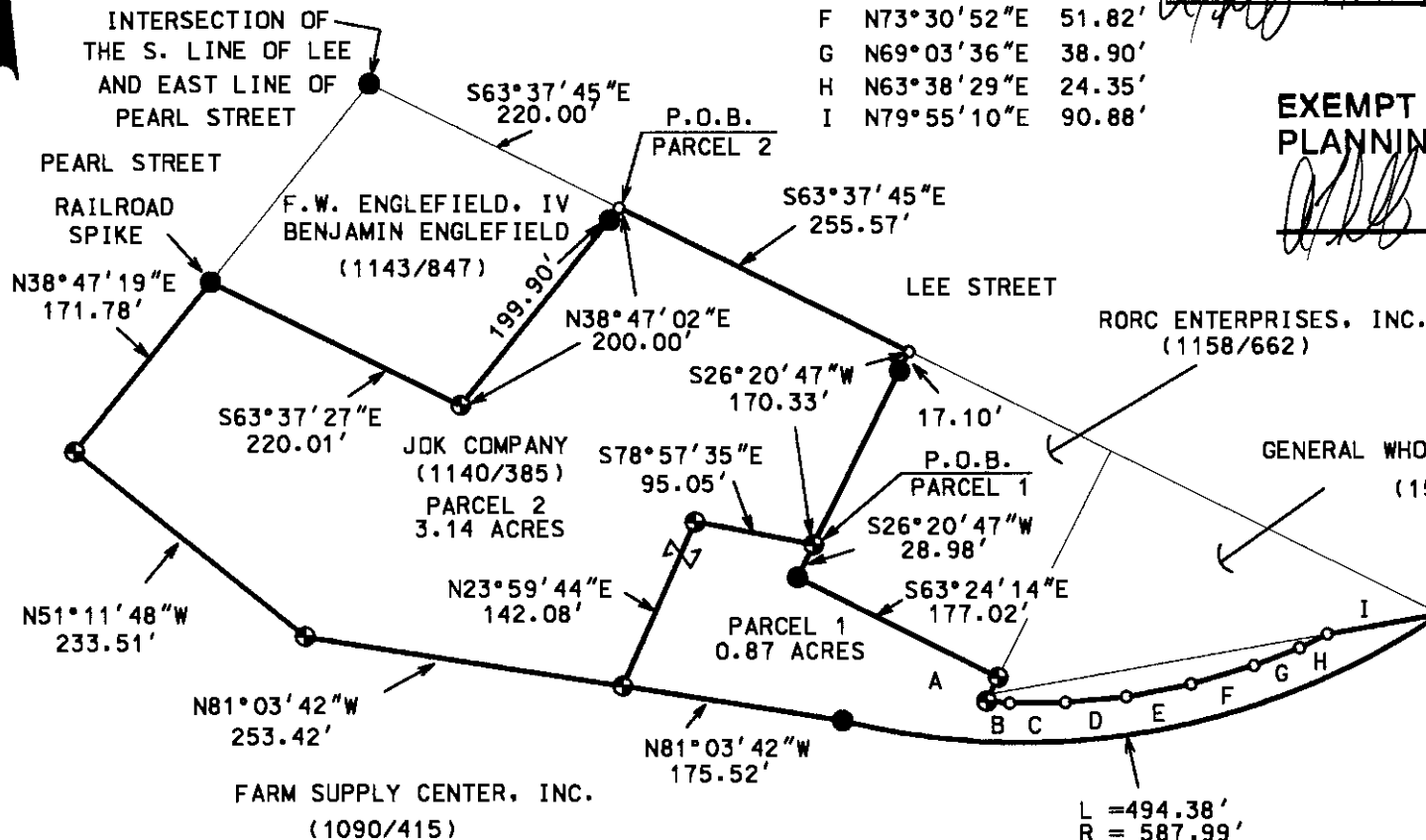
AUDITORS PARCEL

83-33-01-01-000

A	S26°10'57"W	20.72'
B	S85°27'27"E	18.29'
C	N89°33'25"E	43.86'
D	N84°57'06"E	48.19'
E	N78°50'54"E	52.22'
F	N73°30'52"E	51.82'
G	N69°03'36"E	38.90'
H	N63°38'29"E	24.35'
I	N79°55'10"E	90.88'

APPROVED FOR CLOSURE

EXEMPT FROM
PLANNING COMMISSION



LEGEND

- IRON PIN FOUND
- ⊕ 5/8" X 30" REBAR SET W/ I.D. CAP
- POINT

I CERTIFY THIS DRAWING WAS PREPARED
FROM AN ACTUAL FIELD SURVEY I CONDUCTED

**OFFICE COPY
NOT RECORDABLE**

BOWMAN SURVEYING

38 N. 4th STR., RM 103
ZANESVILLE, OHIO 43701
PHONE/FAX 740-454-0496

JOB: M-06251

DATE: 07/11/06