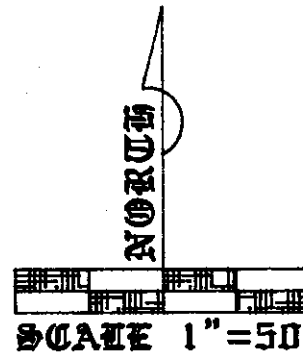


84-08-02-28 1022 LINDSAY AVE
84-08-02-29

Being all of lots 4 and 5 of the unrecorded plat
of the Lindsay and Newman's Subdivision
in out-lot 8 of Mt. Auburn Addition, as recorded
in Plat Book 1 pages 74&75 of the Muskingum
county plat records

Bearings based on a previous survey
by W.J. Biedenbach, dated 6-9-82 and
are for angular calculation only

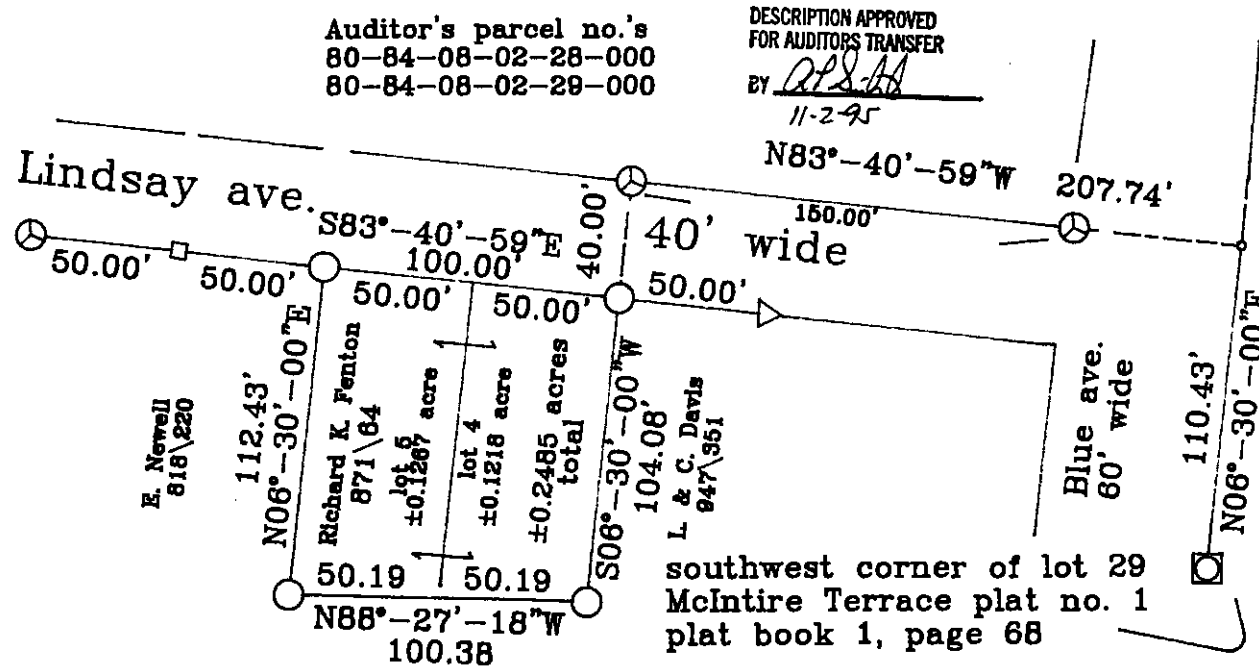
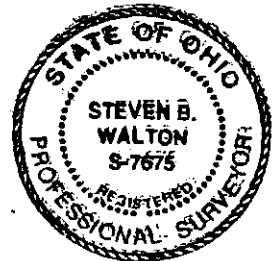


LEDGEND

- = 5/8" iron pin w/i.d. cap set
- ▷ = axle found
- ⊙ = 5/8" iron pin found
- = nail found in concrete
- ◻ = concrete monument found
- = point

REFERENCES

deeds as noted
previous surveys by
w.j. Biedenbach
county tax maps
plat book 1 pages 74 & 75



I hereby certify to the best of my
knowledge and belief, the above plat
to be correct, as prepared by me
on this 1st day of october, 1995

Steven B. Walton S-7675
Ohio professional