

The bearings on this plat are based on a previous survey done by Raymond M. Roberts Registered Surveyor #5803, completed on May 18, 1981.

Office Copy
SURVEY PLAT FOR DOUG JAMES

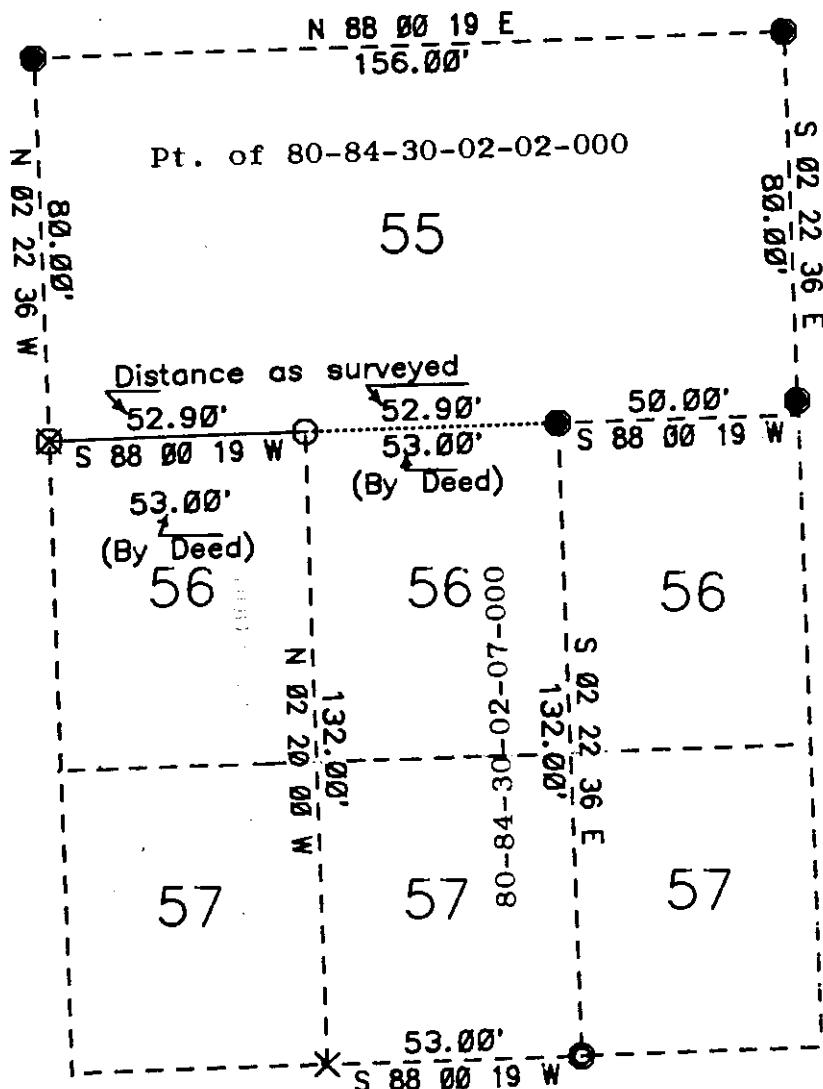
JOB #166
PLAT #001

Muskingum County Auditor's Parcel
Number 80-84-30-02-07-000.

1343 EASTMAN ST

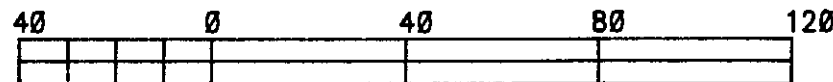
LEGEND

- X Hole in Concrete (found)
- ⊗ Axle (found)
- Iron Pipe (found)
- Iron Pin (found)
- ⊕ Railroad Spike (found)
- ⊕ Nail (found)
- Iron Pin (set) 5/8" rebar 34" in length with aluminum identification cap (C R Harkness R S 6885).



Situated in the State of Ohio, County of Muskingum, City of Zanesville, and Fox Terrace Addition as Recorded in Common Pleas Court Record Vol. 66, Page 357;

Being a survey to reset a disturbed pin on the line between Lots #56 & #55 as shown, being based on said prior survey by Raymond M. Roberts.



GRAPHIC SCALE

**OFFICE COPY
NOT RECORDABLE**
Charles R. Harkness

This plat was prepared by Charles R. Harkness Registered Surveyor #6885 from an actual survey completed on January 15, 1987.