

84-52-01-18-000A

SYMBOL LEGEND

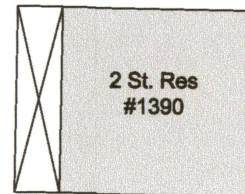
- R/W - Right of Way
P/L - Adjoiner Line
C/L - Centerline
⬡ - Potential Encroachment
C - Calculated
M - Measured
R - Record
- Surveyed** (Record)
POB - Point of Beginning
TPOB - True Point of Beginning
○ - Iron Pin Fd. as Noted
▲ - Mag Nail/Drill Hole Set
- - Building Area
--- - Easement Line
— - Boundary Line
—X— - 4' Chain Link Fence

PLAT OF SURVEY

Situated in the City of Zanesville, County of Muskingum and State of Ohio, being part of the Third Ward of the City of Zanesville, and being part of the 3rd Quarter of Township 1, Range 7, United States Military District

Denise Eminhizer
Vol. 2327, Pg. 126
PN 84-52-01-16-000

Tony L. Dukes
Vol. 1062, Pg. 597
0.364 Acres (15,858 Sq. Ft.)
ALL OF PN 84-52-01-18-000



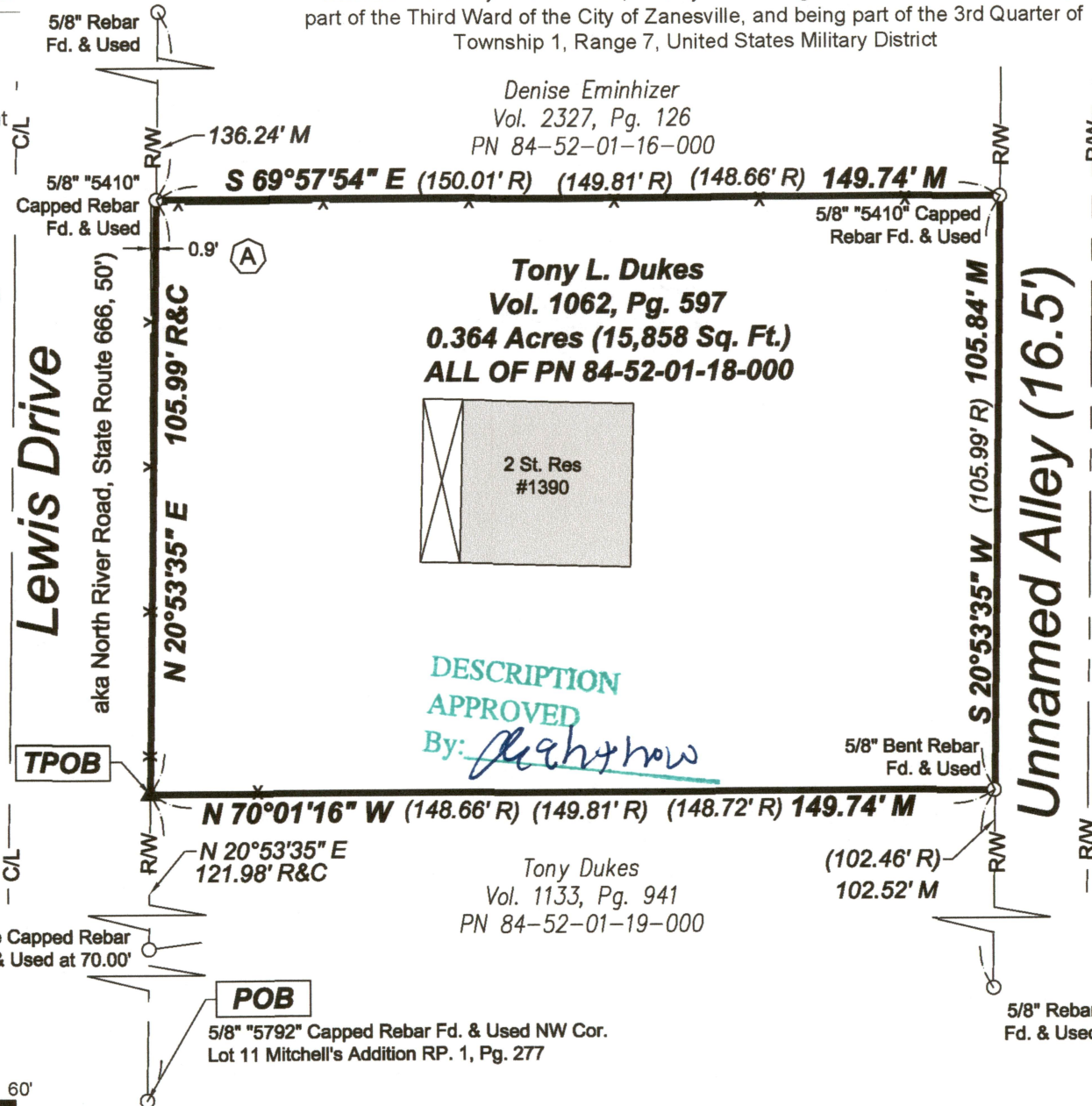
DESCRIPTION
APPROVED

By: *Alaina J. DeWitt*

Tony Dukes
Vol. 1133, Pg. 941
PN 84-52-01-19-000

POB

5/8" "5792" Capped Rebar Fd. & Used NW Cor.
Lot 11 Mitchell's Addition RP. 1, Pg. 277



NOTES:

- Monuments found or set are flush with the ground and in good condition unless otherwise noted.
- Pertinent documents include: surveys on file at the County Engineer's Office, Deeds and Plats as shown hereon and County Tax Maps
- Basis of bearings is Ohio State Plane Coordinate System, South Zone (3402), NAD83 (2011, EPOCH 2010). Distances are listed in Ground.
- Fence in right of way of Lewis Drive a maximum distance of 0.9 feet.

PREPARED FOR:

Kincaid, Taylor & Geyer
50 N 4TH Street, Zanesville, OH 43701
www.kincaidlaw.com
(740) 454-2591

PREPARED BY:

Cardinal Precision Surveying, LLC

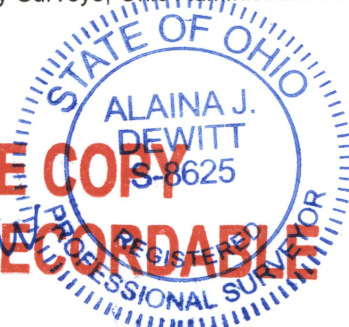
2715 Virginia Ridge Road
Philo, OH 43771
(330) 603-0264
www.cardinalprecisionsurveying.com
adewitt@cardinalprecisionsurveying.com



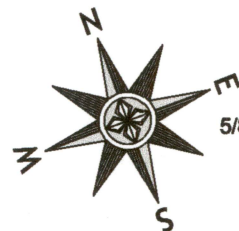
CERTIFICATION:

I certify that the parcel shown hereon has been surveyed by me or under my direct supervision in accordance with the Minimum Standards For Boundary Surveys, Ohio Administrative Code, Chapter 4733.37.

OFFICE COPY
NOT RECORDABLE



By: *Alaina J. DeWitt*
Alaina J. DeWitt, P.S.
License No. S-8625
Field Date: September 18, 2020
Date of Last Revision: September 21, 2020
CPS SITE NO. 20083



GRAPHIC SCALE

0 30' 60'

1 INCH = 30 FT.