

## SITUATED IN

The State of Ohio, County of Muskingum  
City of Zanesville being part of Lots 4, 5, 6 & 7  
of Henry J. Rownd's Addition (RP1, Pg. 181) and  
Lots 3 & 4 of McIntire's Northeast Addition of Square 27  
(DR "D", Page 606).

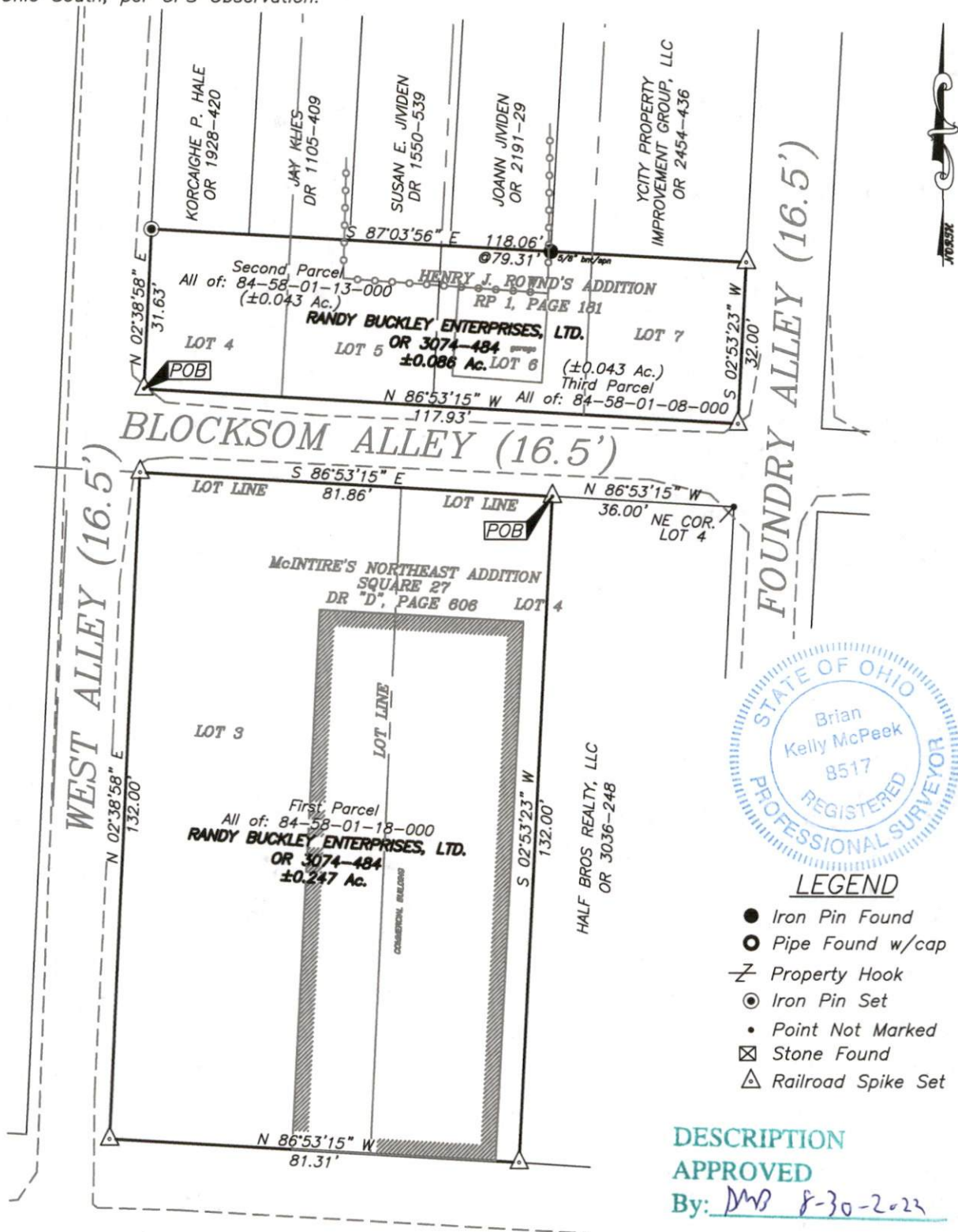
## BASIS OF BEARING

Bearings are based on State Plane Grid Coordinates,  
NAD83, Ohio South, per GPS Observation.

## RE~SURVEY

## REFERENCES

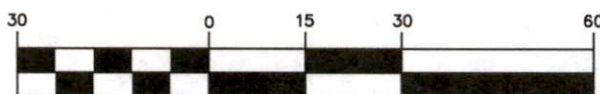
\* As Noted on Plat  
[www.muskingumcountyauditor.org](http://www.muskingumcountyauditor.org)  
[www.mceo.org](http://www.mceo.org)  
<http://recorder.muskingumcounty.org>



DESCRIPTION  
APPROVED

By: *MB* 8-30-2023

GRAPHIC SCALE



( IN FEET )

1 inch = 30 ft.

OFFICE COPY

Date 8/29/22

Brian Kelly McPeck

Reg. Surveyor No. 8517

NOT RECORDABLE

This plat was prepared by McPeck Land Surveying, LLC  
in accordance with Chapter 4733-37 of the Administrative Code,  
and is intended to be used for the legal transfer of the property  
described and does not intend to describe all or any easements  
of record, nor encroachments unless otherwise intended.



**MCPECK  
LAND  
SURVEYING**

[www.mcpecklandsurveying.com](http://www.mcpecklandsurveying.com)

email: [brian@mcpecklandsurveying.com](mailto:brian@mcpecklandsurveying.com)

340 Robin Hood Ln., \* Zanesville, Oh 43701 \* 740.704.6073

LLC