

LEGEND

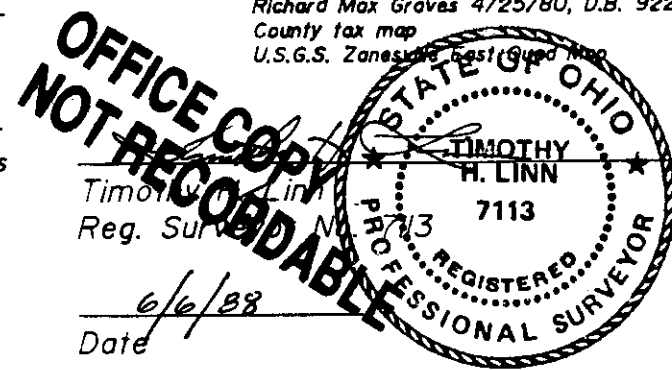
- ⊠ Axle Found
- 5/8" Iron Pin Found
- △ Railroad Spike Set
- ⊙ 5/8" Iron Pin Set
- Point
- ⦿ Pipe Found

DESCRIPTION APPROVED
FOR AUDITOR'S TRANSFER

BY *J. T. Linn* 6/6/88

REFERENCES

Deeds as noted
Existing Monumentation
Previous survey by,
Richard Max Graves 4/25/80, D.B. 922, Pg. 29
County tax map
U.S.G.S. Zanesville East of Ohio



SITUATED IN AND BEING A PART OF:

The Fourth Ward of the City of Zanesville, Muskingum County, Ohio.

BASIS OF BEARINGS

Bearings based on the North Line of a survey by Richard Max Graves as recorded in Deed Book 922, Page 29 and are for the determination of angles only.

NOTE: J. & G. Tullius deed references (535-881) and (538-944) have been combined into one description and parcel number.

NOTE: The line between Tullius and Metcalf has been established by their mutual consent.



Linn Engineering, Inc.
Civil Engineering Consultants
P.O. Box 2671 Zanesville, Ohio 43702-2671

614-452-7434