

PLAT OF SURVEY FOR THE VACATION OF PART OF ELBERON AVENUE & PART OF COURT ALLEY  
FOR MUSKINGUM COUNTY CONVENTION FACILITIES AUTHORITY

SITUATED IN AND BEING PART OF  
ELBERON AVENUE AND COURT ALLEY  
NORTHERN ADDITION TO THE CITY OF ZANESVILLE  
PLAT BOOK 1, PAGE 64  
CITY OF ZANESVILLE, MUSKINGUM COUNTY, OHIO

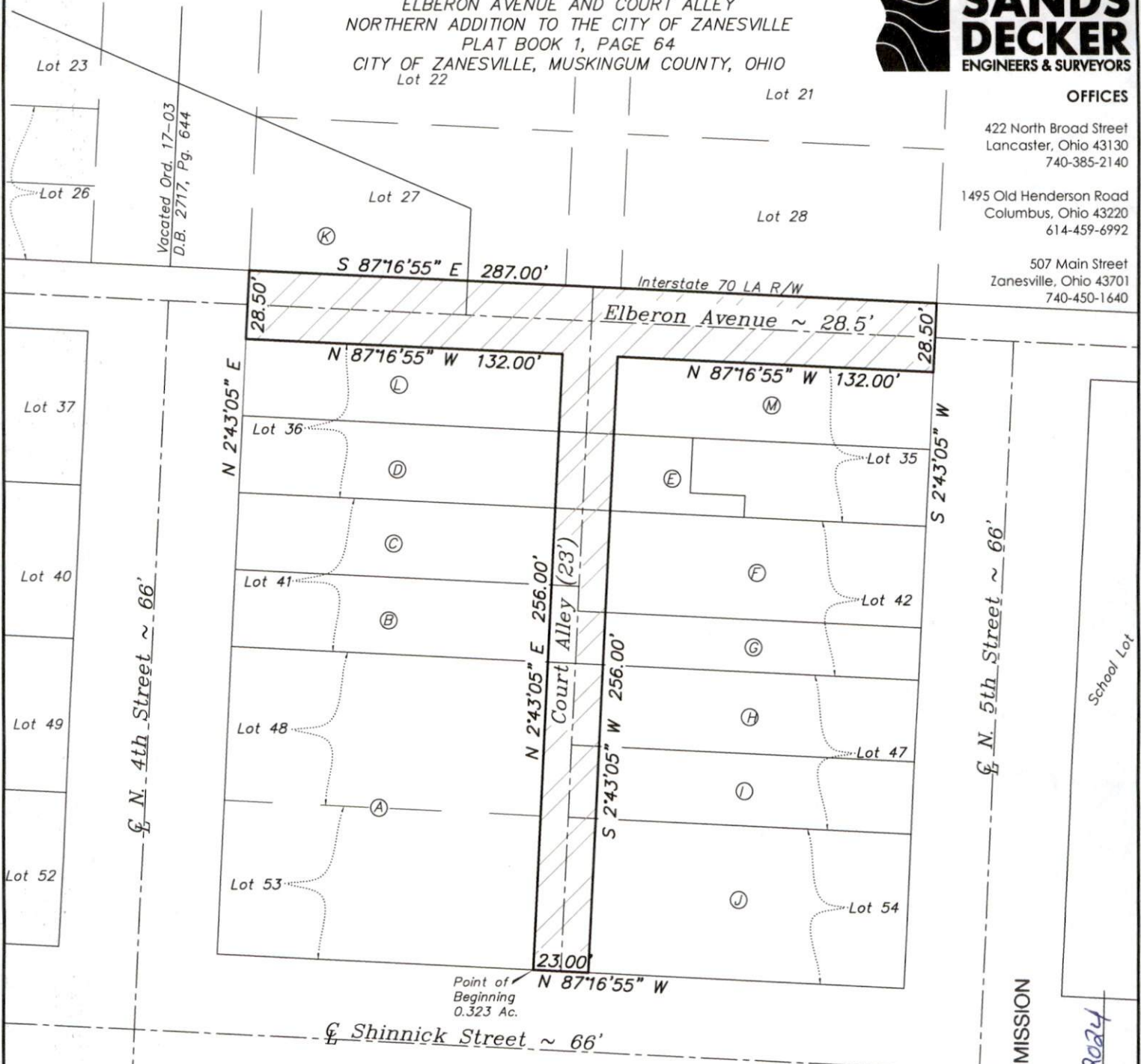


OFFICES

422 North Broad Street  
Lancaster, Ohio 43130  
740-385-2140

1495 Old Henderson Road  
Columbus, Ohio 43220  
614-459-6992

507 Main Street  
Zanesville, Ohio 43701  
740-450-1640



DESCRIPTION

APPROVED

By: *[Signature]*

Owner	Deed	Parcel #	Acreage to be added to Parcel #
A Muskingum County Convention Facilities Authority	D.B. 1105, Pg. 22	84-24-01-07-000	±0.034 Acre
B Muskingum County Convention Facilities Authority	D.B. 1151, Pg. 653	84-24-01-06-000	±0.008 Acre
C Muskingum County Convention Facilities Authority	D.B. 2619, Pg. 452	84-24-01-05-000	±0.008 Acre
D Muskingum County Convention Facilities Authority	D.B. 2619, Pg. 452	84-24-01-04-000	±0.008 Acre
E Muskingum County Convention Facilities Authority	D.B. 1128, Pg. 921	84-24-01-03-000	±0.008 Acre
F Muskingum County Convention Facilities Authority	D.B. 1098, Pg. 445	84-24-01-12-000	±0.011 Acre
G Muskingum County Convention Facilities Authority	D.B. 1098, Pg. 445	84-24-01-11-000	±0.006 Acre
H Muskingum County Convention Facilities Authority	D.B. 1053, Pg. 371	84-24-01-10-000	±0.009 Acre
I Muskingum County Convention Facilities Authority	D.B. 1075, Pg. 44	84-24-01-09-000	±0.008 Acre
J Muskingum County Convention Facilities Authority	D.B. 1053, Pg. 371	84-24-01-08-000	±0.017 Acre
K Muskingum County Convention Facilities Authority	D.B. 2619, Pg. 452	84-61-01-09-000	±0.030 Acre
L Muskingum County Convention Facilities Authority	D.B. 3135, Pg. 18	84-24-01-15-000	±0.073 Acre
M Muskingum County Convention Facilities Authority	D.B. 3135, Pg. 18	84-24-01-14-000	±0.103 Acre

Owner	Deed	Parcel #	Acreage to be added to Parcel #
A Muskingum County Convention Facilities Authority	D.B. 1105, Pg. 22	84-24-01-07-000	±0.034 Acre
B Muskingum County Convention Facilities Authority	D.B. 1151, Pg. 653	84-24-01-06-000	±0.008 Acre
C Muskingum County Convention Facilities Authority	D.B. 2619, Pg. 452	84-24-01-05-000	±0.008 Acre
D Muskingum County Convention Facilities Authority	D.B. 2619, Pg. 452	84-24-01-04-000	±0.008 Acre
E Muskingum County Convention Facilities Authority	D.B. 1128, Pg. 921	84-24-01-03-000	±0.008 Acre
F Muskingum County Convention Facilities Authority	D.B. 1098, Pg. 445	84-24-01-12-000	±0.011 Acre
G Muskingum County Convention Facilities Authority	D.B. 1098, Pg. 445	84-24-01-11-000	±0.006 Acre
H Muskingum County Convention Facilities Authority	D.B. 1053, Pg. 371	84-24-01-10-000	±0.009 Acre
I Muskingum County Convention Facilities Authority	D.B. 1075, Pg. 44	84-24-01-09-000	±0.008 Acre
J Muskingum County Convention Facilities Authority	D.B. 1053, Pg. 371	84-24-01-08-000	±0.017 Acre
K Muskingum County Convention Facilities Authority	D.B. 2619, Pg. 452	84-61-01-09-000	±0.030 Acre
L Muskingum County Convention Facilities Authority	D.B. 3135, Pg. 18	84-24-01-15-000	±0.073 Acre
M Muskingum County Convention Facilities Authority	D.B. 3135, Pg. 18	84-24-01-14-000	±0.103 Acre

APPROVED BY CITY PLANNING COMMISSION  
ZANESVILLE, OHIO  
*[Signature]* 12-5-2024

NOTES

Basis of Bearings: The easterly Right of Way line of Fourth Street was assigned a bearing of North 2°43'05" East as shown on 2007 survey prepared by Linn Engineering, Inc.

This Right of Way Vacation Exhibit was prepared based on existing deed records and prior surveys, and does not reflect an actual boundary survey prepared by Sands Decker.

Right of Way Vacation prepared by

**OFFICE COPY**  
*Kevin Beechy 6/6/23*  
**NOT RECORDABLE**

Kevin Beechy  
Ohio Professional Surveyor No. 7891

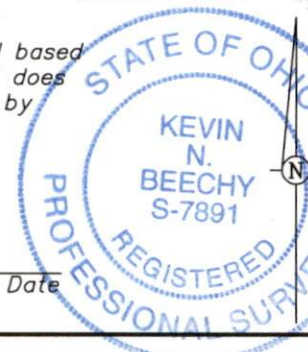
Date

0 60  
SCALE 1 INCH = 60 FEET

LEGEND



0.323 Acre R/W to be vacated (Elberon Avenue & Court Alley)



RIGHT OF WAY VACATION FOR MUSKINGUM  
COUNTY CONVENTION FACILITIES AUTHORITY  
0.323 ACRE ~ ELBERON AVENUE & COURT  
ALLEY ~ CITY OF ZANESVILLE  
MUSKINGUM COUNTY, OHIO

SCALE 1"=60'	DRAWN KB	CHECKED RC	DATE 06-06-23	SHEET 1 OF 1
-----------------	-------------	---------------	------------------	-----------------