

Being a part of the Northeast Quarter of Section 27 and the North west Quarter of Section 26, Township 12, Range 12, Blue Rock Township, Muskingum County, Ohio and being further described as follows:

Beginning at a point marked by an existing Stone at the Northeast Corner of Section 27; thence South 00 degrees 10 minutes 32 seconds West 1170.16 feet along the East line of Section 27 to a point marked by an iron pin; thence North 89 degrees 50 minutes 24 seconds East 1319.76 feet to a point; thence South 00 degrees 39 minutes 43 seconds West 976.83 feet to a point marked by an iron pin, passing a point marked by an iron pin at 2.94 feet; thence South 88 degrees 03 minutes 03 seconds West 1312.34 feet to a point marked by an iron pin; thence South 00 degrees 10 minutes 32 seconds West 477.60 feet along the East line of Section 27 to a point in the center of State Route number 376, passing a point marked by an iron pin at 443.60 feet; thence North 88 degrees 49 minutes 15 seconds West 170.21 feet to a point in the center of State Route 376; thence North 80 degrees 40 minutes 56 seconds West 98.86 feet to a point in the center of State Route 376; thence North 89 degrees 35 minutes 31 seconds West 31.28 feet to a point in the center of State Route 376; said point being South 07 degrees 29 minutes 27 seconds West 21.03 feet from a point marked by an iron pin; thence North 75 degrees 21 minutes 14 seconds West 106.40 feet to a point in the center of State Route 376; thence North 72 degrees 22 minutes 25 seconds West 180.52 feet to a point in the center of State Route 376; thence North 77 degrees 49 minutes 42 seconds West 103.61 feet to a point in the center of State Route 376, said point being South 14 degrees 52 minutes 29 seconds West 18.51 feet from a point marked by an iron pin; thence North 80 degrees 50 minutes 46 seconds West 249.20 feet to a point in the center of State Route 376; thence North 75 degrees 19 minutes 48 seconds West 357.97 feet to a point in the center of State Route 376; thence North 69 degrees 54 minutes 52 seconds West 120.30 feet to a point in the center of State Route 376; thence North 61 degrees 13 minutes 26 seconds West 46.72 feet to a point in the center of State Route 376, said point being South 64 degrees 21 minutes 25 seconds West 17.62 feet from a point marked by an iron pin; thence North 53 degrees 35 minutes 45 seconds West 91.19 feet to a point in the center of State Route 376; thence North 48 degrees 09 minutes 03 seconds West 317.12 feet to a point in the center of State Route 376; thence North 44 degrees 25 minutes 10 seconds West 303.61 feet to a point in the center of State Route number 376; thence North 51 degrees 47 minutes 53 seconds West 185.74 feet to a point in the center of State 376; thence North 57 degrees 33 minutes 54 seconds West 157.49 feet to a point in the center of State Route 376, said point being South 35 degrees 42 minutes 32 seconds West 17.10 feet from a point marked by an iron pin; thence North 57 degrees 48 minutes 43 seconds West 284.59 feet to a point in the center of State Route 376; thence North 53 degrees 06 minutes 38 seconds West 64.70 feet to a point in the center of State Route 376; thence North 48 degrees 54 minutes 46 seconds West 42.13 feet to a point in the center of State Route 376; thence North 45 degrees 52 minutes 33 seconds West 36.18 feet to a point in the center of State Route 376; thence North 02 degrees 04 minutes 00 seconds West 1423.95 feet along the West line of the Northeast Quarter of Section 27 to a point marked by an iron pin, said point being the Northwest corner of the Northeast Quarter of section 27, passing a point marked by an iron pin at 32.93 feet; thence East 2632.39 feet to the place of beginning.

Containing 163.236 more or less acres total --133.121 acres in section 27 and 30.116 more or less acres in Section 26, subject to all legal road right-of-ways.

I hereby certify the above description to be correct as prepared by me, this 20th day of December, 1978.

OFFICE COPY  
NOT RECORDABLE

*W.J. Biedenbach*

REG. SURVEYOR #5718

W.J. BIEDENBACH

W. J. BIEDENBACH & ASSOC.  
Surveying & Mapping  
3120 Lisa Ln. Zanesville, Ohio 43701  
(614) 463-4890

DRAWN BY: <u>MDN</u>	Date: <u>12-20-78</u>
Scale: <u>1"=200'</u>	Checked by:
Job No. <u>MDN 12-20</u>	<u>B. Biedenbach</u>

W. J. BIEDENBACH AND ASSOCIATES, SURVEYING AND MAPPING  
3120 LISA LANE, ZANESVILLE, OHIO 43701 (614)453-4850

ALSO THE FOLLOWING 20 FOOT WIDE INGRESS AND EGRESS EASEMENT

BEING A PART OF THE NORTHEAST QUARTER OF SECTION 27, TOWNSHIP 12, RANGE 12, OF THE CONGRESS LANDS EAST OF THE SCIOTO RIVER, BLUE ROCK TOWNSHIP, MUSKINGUM COUNTY, OHIO AND BEING FURTHER DESCRIBED AS FOLLOWS:

COMMENCING AT THE NORTHEAST CORNER OF SECTION 27; THENCE ALONG THE EAST LINE OF SAID SECTION SOUTH 00 DEGREES 10 MINUTES 32 SECONDS WEST 1424.48 FEET TO A POINT; THENCE LEAVING SAID SECTION LINE NORTH 89 DEGREES 49 MINUTES 28 SECONDS WEST 672.14 FEET TO AN IRON PIN SET; THENCE SOUTH 01 DEGREES 05 MINUTES 49 SECONDS WEST 142.08 FEET TO A POINT AT THE NORTHWEST CORNER OF SAID EASEMENT; THENCE SOUTH 88 DEGREES 54 MINUTES 11 SECONDS EAST 10.00 FEET TO A POINT ON THE CENTERLINE OF SAID EASEMENT; THENCE FOLLOWING THE CENTERLINE OF SAID 20 FOOT WIDE EASEMENT THE NEXT TWENTY COURSES AND DISTANCES:

- 1) SOUTH 01 DEGREES 05 MINUTES 49 SECONDS WEST 189.00 FEET TO A POINT,
- 2) SOUTH 18 DEGREES 09 MINUTES 30 SECONDS EAST 70.07 FEET TO A POINT,
- 3) SOUTH 17 DEGREES 47 MINUTES 16 SECONDS EAST 94.64 FEET TO A POINT,
- 4) SOUTH 05 DEGREES 39 MINUTES 52 SECONDS EAST 59.92 FEET TO A POINT,
- 5) SOUTH 15 DEGREES 34 MINUTES 32 SECONDS WEST 54.82 FEET TO A POINT,
- 6) SOUTH 29 DEGREES 40 MINUTES 24 SECONDS WEST 70.09 FEET TO A POINT,
- 7) SOUTH 22 DEGREES 35 MINUTES 10 SECONDS WEST 27.85 FEET TO A POINT,
- 8) SOUTH 13 DEGREES 48 MINUTES 22 SECONDS WEST 33.30 FEET TO A POINT,
- 9) SOUTH 05 DEGREES 22 MINUTES 35 SECONDS WEST 94.95 FEET TO A POINT,
- 10) SOUTH 01 DEGREES 35 MINUTES 50 SECONDS EAST 55.71 FEET TO A POINT,
- 11) SOUTH 15 DEGREES 03 MINUTES 06 SECONDS EAST 37.87 FEET TO A POINT,
- 12) SOUTH 33 DEGREES 11 MINUTES 03 SECONDS EAST 42.16 FEET TO A POINT,
- 13) SOUTH 51 DEGREES 49 MINUTES 16 SECONDS EAST 47.57 FEET TO A POINT,
- 14) SOUTH 67 DEGREES 19 MINUTES 00 SECONDS EAST 44.40 FEET TO A POINT,
- 15) SOUTH 78 DEGREES 36 MINUTES 55 SECONDS EAST 54.42 FEET TO A POINT,
- 16) SOUTH 69 DEGREES 20 MINUTES 45 SECONDS EAST 42.78 FEET TO A POINT,
- 17) SOUTH 44 DEGREES 11 MINUTES 41 SECONDS EAST 44.48 FEET TO A POINT,
- 18) SOUTH 19 DEGREES 35 MINUTES 16 SECONDS EAST 45.43 FEET TO A POINT,
- 19) SOUTH 04 DEGREES 03 MINUTES 48 SECONDS EAST 40.77 FEET TO A POINT,
- 20) SOUTH 10 DEGREES 22 MINUTES 55 SECONDS WEST 56.24 FEET TO A POINT IN THE CENTER OF STATE ROUTE 376, SAID POINT BEING THE TERMINUS OF THIS EASEMENT.

ALL IRON PINS SET ARE 5/8 INCH X 30 INCH REBAR WITH PLASTIC IDENTIFICATION CAP.

BEARINGS ARE BASED ON THE EAST LINE OF THE PREVIOUS SURVEY OF 133.121 MORE OR LESS ACRES AS RECORDED IN DEED BOOK VOLUME 801, PAGE 148 OF THE MUSKINGUM COUNTY DEED RECORDS.

I HEREBY CERTIFY TO THE BEST OF MY KNOWLEDGE THE SURVEY AND DESCRIPTION TO BE CORRECT AS PREPARED BY ME, THIS 20TH DAY OF FEBRUARY 1992 FROM AN ACTUAL FIELD SURVEY COMPLETED ON THE 19TH DAY OF FEBRUARY 1992.

W. J. BIEDENBACH



E3437-4

R. KING Kuchor

OK KDT  
3-19-92

DESCRIPTION FOR CONVEYANCE  
PARCEL NUMBER 06-06-80-27-01-000 (PART)

BEING A PART OF THE NORTHEAST QUARTER OF SECTION 27, TOWNSHIP  
12, RANGE 12, OF THE CONGRESS LANDS EAST OF THE SCIOTO RIVER,  
BLUE ROCK TOWNSHIP, MUSKINGUM COUNTY, OHIO AND BEING FURTHER  
DESCRIBED AS FOLLOWS:

COMMENCING AT THE NORTHEAST CORNER OF SECTION 27; THENCE  
ALONG THE EAST LINE OF SAID SECTION SOUTH 00 DEGREES 10  
MINUTES 32 SECONDS WEST 1424.48 FEET TO A POINT; THENCE  
LEAVING SAID SECTION LINE NORTH 89 DEGREES 49 MINUTES 28  
SECONDS WEST 672.14 FEET TO AN IRON PIN SET, SAID IRON PIN  
BEING THE PLACE OF BEGINNING OF THE TRACT HEREIN INTENDED TO  
BE DESCRIBED; THENCE SOUTH 01 DEGREES 05 MINUTES 49 SECONDS  
WEST 331.08 FEET TO AN IRON PIN SET; THENCE NORTH 88 DEGREES  
54 MINUTES 11 SECONDS WEST, PASSING AN IRON PIN SET AT 409.08  
FEET, A TOTAL DISTANCE OF 659.16 FEET TO AN IRON PIN SET;  
THENCE NORTH 01 DEGREES 05 MINUTES 49 SECONDS EAST 331.08  
FEET TO AN IRON PIN SET; THENCE SOUTH 88 DEGREES 54 MINUTES  
11 SECONDS EAST 659.16 FEET TO THE PLACE OF BEGINNING.

CONTAINING 5.010 MORE OR LESS ACRES. SUBJECT TO ALL  
APPLICABLE EASEMENTS.

D3437-4 R. KING (Kuhn)

OFFICE COPY  
NOT RECORDABLE

Northeast Corner  
Section 27

5.00°10'32"W. 1424.48'

Scale: 1" = 100'

- ~ Existing Iron Pin (as noted)
- ⊙ ~ Iron Pin Set ( $\frac{5}{8}$ " x 30" rebar w/ plastic id. cap)

Research

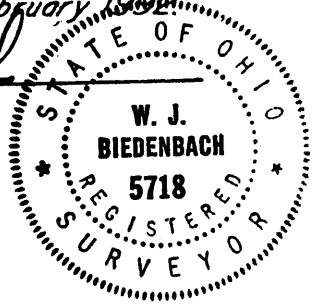
Vol. 801 Pg. 148  
Muskingum County Tax Map

Bearings are based on the East Line of the previous survey of 133.121± Acres as recorded in Deed Book Volume 801, Pg. 148 of the Muskingum County Deed Records.

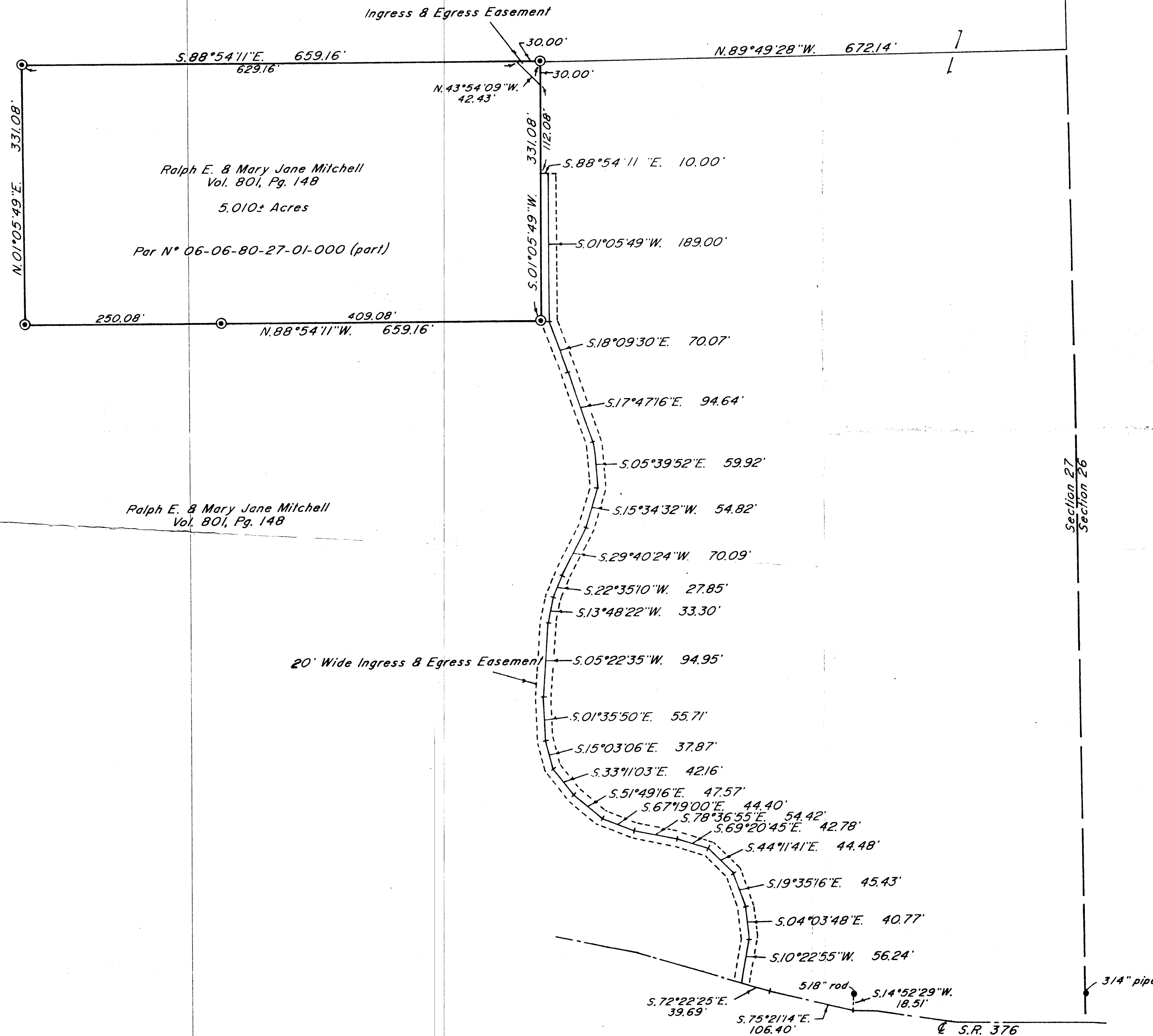
Being a part of the Northeast Quarter of Section 27, Township 12, Range 12, of the Congress Lands East of the Scioto River, Blue Rock Township, Muskingum County, Ohio.

I hereby certify to the best of my knowledge, information, and belief, the above plat and survey to be correct as prepared by me this 20th day of February 1992, from an actual field survey completed on the 10th day of February 1992.

W. J. BIEDENBACH  
Reg. Surveyor #5718



W. J. BIEDENBACH & ASSOC. SURVEYING & MAPPING ZANESVILLE, OHIO (614) 453-4850	
Drawn by: SDD	Date: 2-20-92
Scale: 1" = 100'	Checked by: JD
Job N°: 3437	R. King





Being a part of the Northeast Quarter of Section 27 and the North west Quarter of Section 26, Township 12, Range 12, Blue Rock Township, Muskingum County, Ohio and being further described as follows:

Beginning at a point marked by an existing Stone at the Northeast Corner of Section 27; thence South 00 degrees 10 minutes 32 seconds West 1170.16 feet along the East line of Section 27 to a point marked by an iron pin; thence North 89 degrees 50 minutes 24 seconds East 1319.76 feet to a point; thence South 00 degrees 39 minutes 43 seconds West 976.83 feet to a point marked by an iron pin, passing a point marked by an iron pin at 2.94 feet; thence South 88 degrees 03 minutes 03 seconds West 1312.34 feet to a point marked by an iron pin; thence South 00 degrees 10 minutes 32 seconds West 472.60 feet along the East line of Section 27 to a point in the center of State Route number 376, passing a point marked by an iron pin at 443.60 feet; thence North 88 degrees 49 minutes 15 seconds West 170.21 feet to a point in the center of State Route 376; thence North 80 degrees 40 minutes 56 seconds West 98.86 feet to a point in the center of State Route 376; thence North 89 degrees 35 minutes 31 seconds West 31.28 feet to a point in the center of State Route 376; said point being South 07 degrees 29 minutes 27 seconds West 21.03 feet from a point marked by an iron pin; thence North 75 degrees 21 minutes 14 seconds West 106.40 feet to a point in the center of State Route 376; thence North 72 degrees 22 minutes 25 seconds West 180.52 feet to a point in the center of State Route 376; thence North 77 degrees 49 minutes 42 seconds West 103.61 feet to a point in the center of State Route 376, said point being South 14 degrees 52 minutes 29 seconds West 18.51 feet from a point marked by an iron pin; thence North 80 degrees 50 minutes 46 seconds West 249.20 feet to a point in the center of State Route 376; thence North 75 degrees 19 minutes 48 seconds West 357.27 feet to a point in the center of State Route 376; thence North 69 degrees 54 minutes 52 seconds West 120.30 feet to a point in the center of State Route 376; thence North 61 degrees 13 minutes 26 seconds West 46.72 feet to a point in the center of State Route 376, said point being South 64 degrees 21 minutes 25 seconds West 17.62 feet from a point marked by an iron pin; thence North 53 degrees 35 minutes 45 seconds West 91.19 feet to a point in the center of State Route 376; thence North 49 degrees 09 minutes 03 seconds West 317.12 feet to a point in the center of State Route 376; thence North 44 degrees 25 minutes 10 seconds West 303.61 feet to a point in the center of State Route number 376; thence North 51 degrees 47 minutes 53 seconds West 185.74 feet to a point in the center of State 376; thence North 57 degrees 33 minutes 54 seconds West 157.49 feet to a point in the center of State Route 376, said point being South 35 degrees 42 minutes 32 seconds West 17.10 feet from a point marked by an iron pin; thence North 57 degrees 48 minutes 43 seconds West 284.59 feet to a point in the center of State Route 376; thence North 53 degrees 06 minutes 38 seconds West 64.70 feet to a point in the center of State Route 376; thence North 48 degrees 54 minutes 46 seconds West 42.13 feet to a point in the center of State Route 376; thence North 45 degrees 52 minutes 33 seconds West 36.18 feet to a point in the center of State Route 376; thence North 02 degrees 04 minutes 00 seconds West 1423.95 feet along the West line of the Northeast Quarter of Section 27 to a point marked by an iron pin, said point being the Northwest corner of the Northeast Quarter of section 27, passing a point marked by an iron pin at 32.93 feet; thence East 2632.39 feet to the place of beginning.

Containing 163.236 more or less acres total --133.121 acres in section 27 and 30.116 more or less acres in Section 26, subject to all legal road right-of-ways.

I hereby certify the above description to be correct as prepared by  
this 20th day of December, 1978.

OFFICE COPY  
NOT RECORDABLE

W.J. Biedenbach

REG. SURVEYOR #5718  
W.J. BIEDENBACH

NW corner of  
NE 1/4 of Sec. 27

N02-38-00W  
1423.95'  
West Line of NE 1/4, Sec 27

OFFICE COPY  
NOT RECORDABLE

East

2632.39'

27

26

20.00'

(133.121)

R.E. & M.J. Mitchell  
801-148

163.236 ac.

(30.116)

East Line of Sec. 27

N89-50-24E

1319.76'

S88-03-03W

1312.34'

S00-39-43W  
976.23'

S00-12-32W  
472.6'

N88-49-15W  
170.21'

N42-59-90W-42.13'  
N53-06-38W  
64.70'  
N57-48-43W  
294.59'

N57-33-54W  
157.49'  
N51-47-53W  
135.74'

N44-52-11W  
203.61'

N49-19-03W  
317.12'

N123-35-45W-91.19'  
N13-36W-46.72'  
N19-54-32W  
120.30'

N75-19-49W  
352.92'

N72-22-35W  
153.91'

N72-49-42W  
153.91'

N72-22-35W  
153.91'

N72-22-35W  
153.91'

N72-22-35W  
153.91'

N72-22-35W  
153.91'

N72-22-35W  
153.91'

N72-22-35W  
153.91'

N72-22-35W  
153.91'

N72-22-35W  
153.91'

N72-22-35W  
153.91'

N72-22-35W  
153.91'

N72-22-35W  
153.91'

N72-22-35W  
153.91'

N72-22-35W  
153.91'

N72-22-35W  
153.91'

N72-22-35W  
153.91'

N72-22-35W  
153.91'

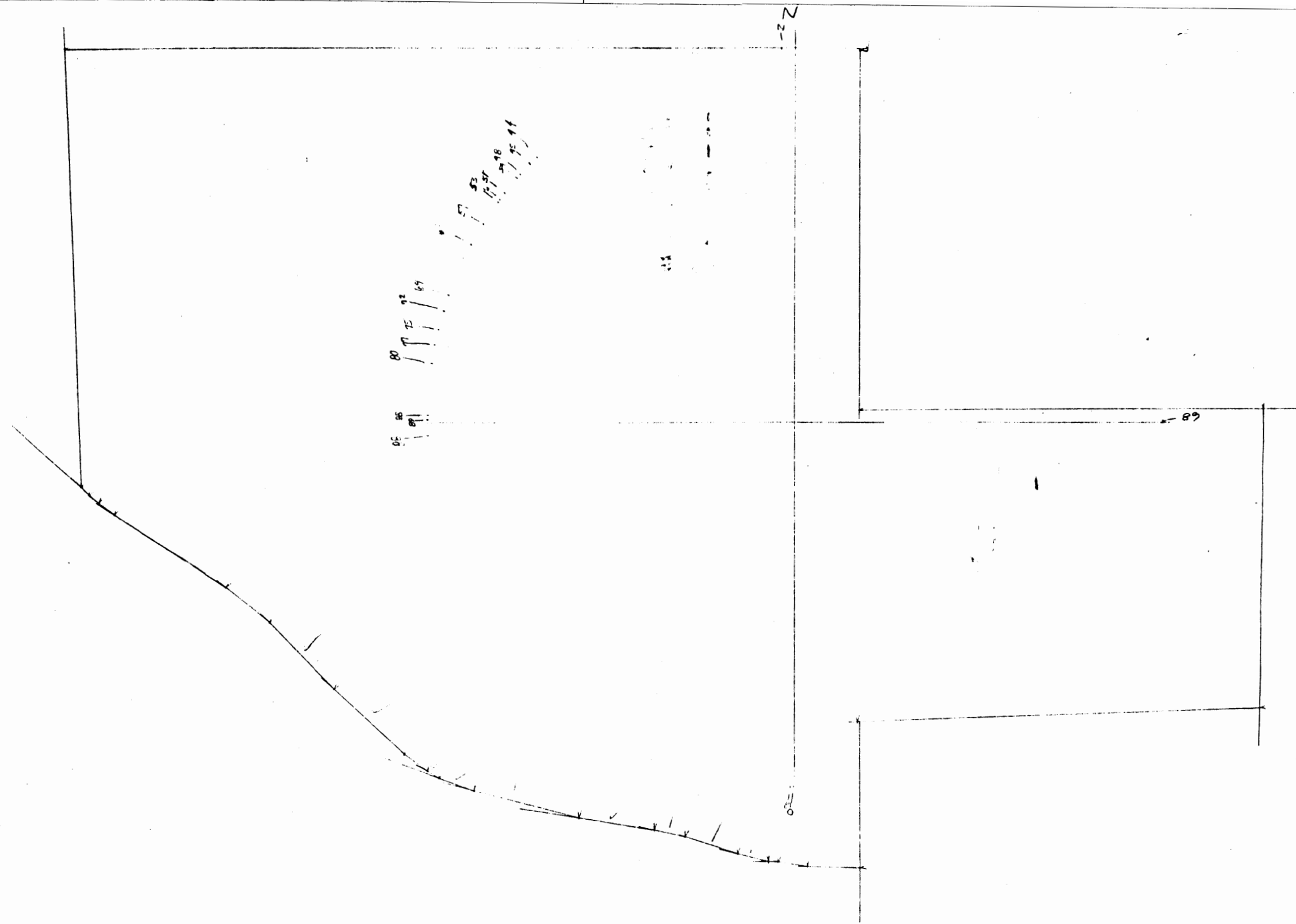
N72-22-35W  
153.91'

N72-22-35W  
153.91'

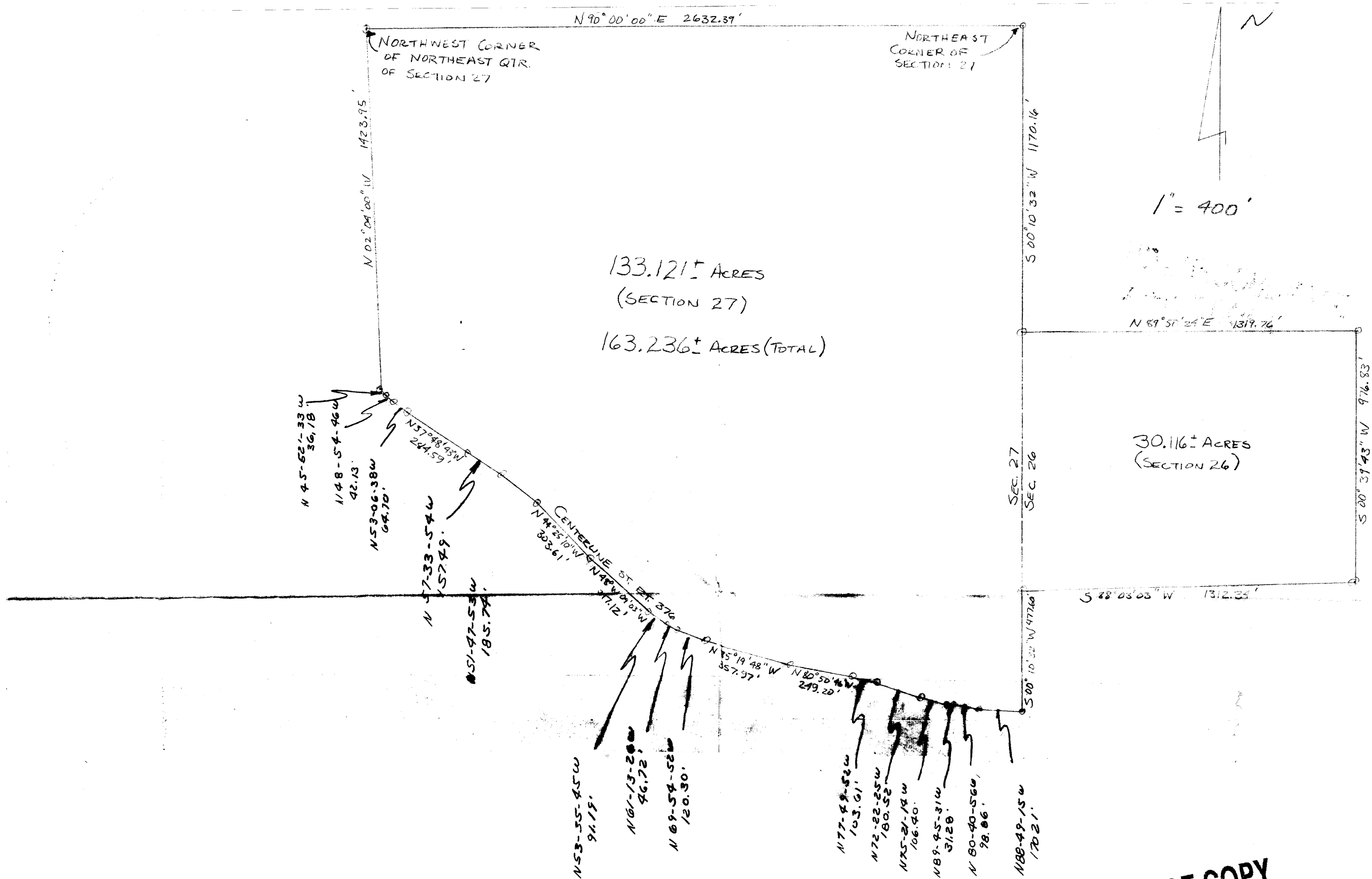
N72-22-35W  
153.91'

N72-22-35W  
153.91'

NE 1/4 of Sec. 27 & NW 1/4 of Sec. 26  
Twp. 12, R. 12, Blue Rock Twp.







**OFFICE COPY  
NOT RECORDABLE**

Being a part of the Northeast Quarter of Section 27 and the Northwest Quarter of Section 26, Township 12, Range 12, Blue Rock Township, Muskingum County, Ohio