

PLAT OF SURVEY FOR MUSKINGUM COUNTY

STATE OF OHIO, MUSKINGUM COUNTY, FALLS
TOWNSHIP, PART OF QUARTER TOWNSHIP 4,
TOWNSHIP 1 NORTH, RANGE 8
WEST, UNITED STATES MILITARY LANDS



ZANE STATE COLLEGE
DR 2332-591

MVOML, INC.
DR 2670-127

COMMISSIONERS OF
MUSKINGUM COUNTY
DR "U", PG. 372

N 22°47'21" E
327.94 FT

COMMISSIONERS OF
MUSKINGUM COUNTY
DR "U"-372
±2.30 ACRES

PART OF PARCEL NO. :
17-78-04-10-000 ±2.30 ACRES

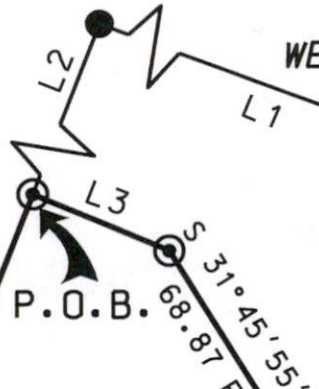
DESCRIPTION
APPROVED

By: DMB 10-14-2022

N 86°23'54" W 379.53 FT

RIVERVIEW DRIVE (TR 622)
(22' WIDE)

S 67°11'05" E
205.46 FT



S 31°45'55" E
68.87 FT

S 20°41'36" W
90.44 FT

S 23°07'58" W
134.17 FT

S 20°41'36" W
30.46 FT

S 02°09'22" W
183.83 FT

S 23°07'58" W
134.17 FT

S 20°41'36" W
30.46 FT

S 02°09'22" W
183.83 FT

SOUTH R/W OF STATE ROUTE
146 AND WEST R/W OF
BUSSEMER LANE (22' WIDE)

COMMISSIONERS OF
MUSKINGUM COUNTY
DR "U", PG. 372

LEGEND

- ⊙ IRON PIN SET 5/8" X 30" W/CAP
MARKED "MUSK CTY"
"SWIERZ 8062"
- IRON PIN FOUND
- MAG-NAIL SET
- POINT

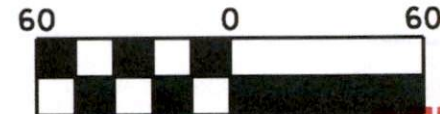
LINE TABLE

L1	N 69°28'35" W	353.58 FT
L2	S 21°24'57" W	392.68 FT
L3	S 67°10'29" E	45.85 FT
L4	S 67°11'05" E	50.00 FT
L5	N 21°24'57" E	61.44 FT
L6	S 20°41'36" W	30.46 FT
L7	S 02°09'22" W	183.83 FT

MUSKINGUM COUNTY ENGINEER'S OFFICE

155 REHL ROAD
ZANESVILLE, OHIO 43701
(740) 454-0155

I HEREBY CERTIFY THIS PLAT
TO BE CORRECT AS SURVEYED
OCTOBER 2022



Scale: 1" = 60'

PERTINENT DOCUMENTS AND SURVEYS USED:
1. DEED REFERENCES SHOWN
2. TAX MAPS
3. SURVEY RECORDS FOUND IN THE MUSKINGUM
COUNTY ENGINEERS OFFICE, ZANESVILLE, OHIO

BASIS OF BEARING:
BEARINGS ARE BASED ON THE SOUTH RIGHT-OF-WAY
OF STATE ROUTE 146, WEST OF BUSSEMER LANE,
BEING NORTH 67 DEGREES 28 MINUTES 35 SECONDS WEST.

**OFFICE COPY
NOT RECORDABLE**

DENIS P. SWIERZ
PS# 8062
DATE 10/13/22