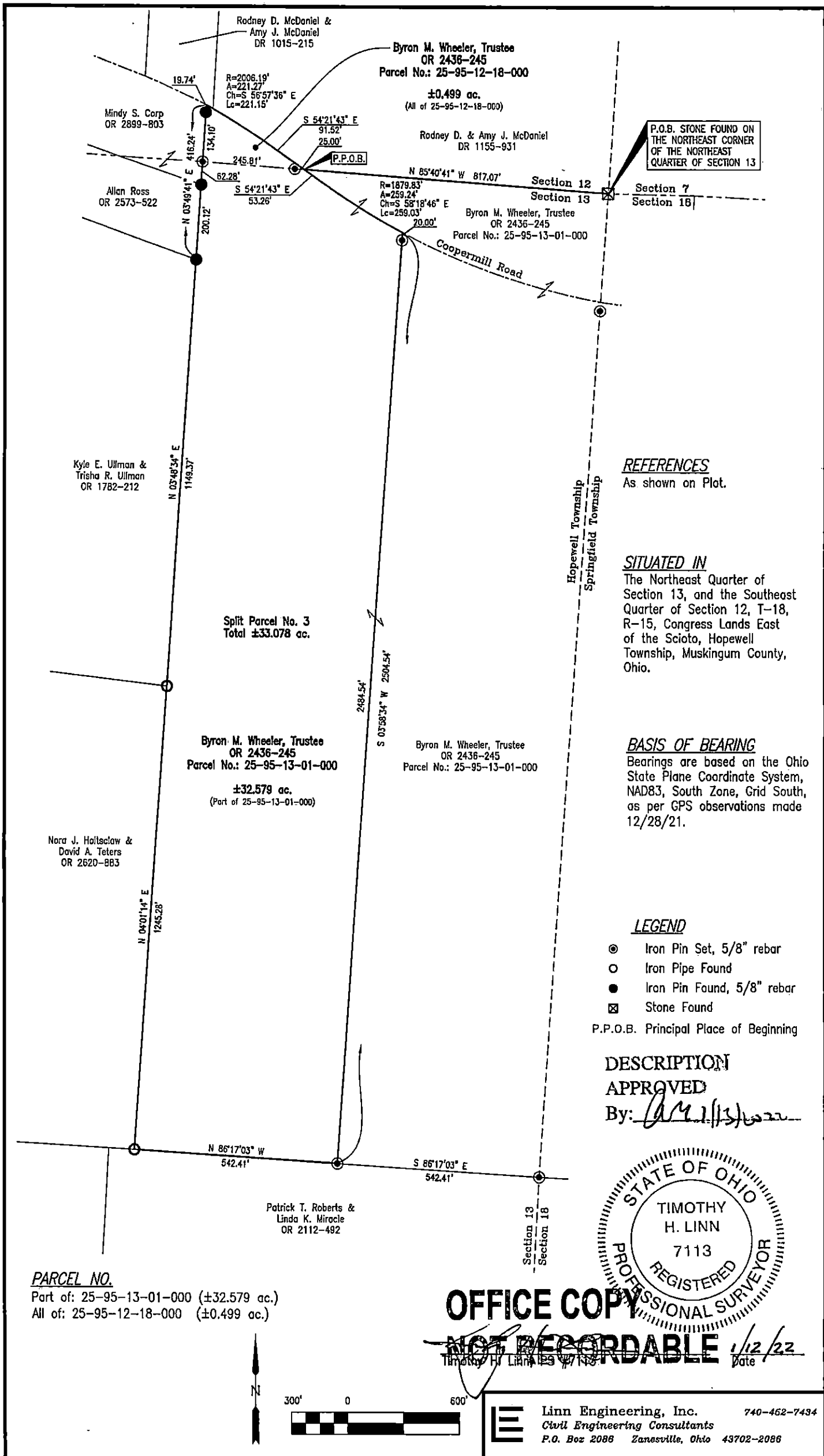


G:\Survey\plans\Muskingum\25 Hopewell\Twp\25-95\25-95 Wheeler\Wheeler 25-95-111.dwg



P.O.B. STONE FOUND ON THE NORTHEAST CORNER OF THE NORTHEAST QUARTER OF SECTION 13

**REFERENCES**  
As shown on Plot.

**SITUATED IN**  
The Northeast Quarter of Section 13, and the Southeast Quarter of Section 12, T-18, R-15, Congress Lands East of the Scioto, Hopewell Township, Muskingum County, Ohio.

**BASIS OF BEARING**  
Bearings are based on the Ohio State Plane Coordinate System, NAD83, South Zone, Grid South, as per GPS observations made 12/28/21.

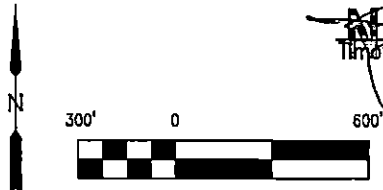
- LEGEND**
- ⊙ Iron Pin Set, 5/8" rebar
  - Iron Pipe Found
  - Iron Pin Found, 5/8" rebar
  - ⊠ Stone Found
- P.P.O.B. Principal Place of Beginning

**DESCRIPTION APPROVED**  
By: *[Signature]*



**OFFICE COPY**  
**NOT RECORDABLE** 1/12/22  
Date

**PARCEL NO.**  
Part of: 25-95-13-01-000 (±32.579 ac.)  
All of: 25-95-12-18-000 (±0.499 ac.)



**Linn Engineering, Inc.** 740-462-7434  
Civil Engineering Consultants  
P.O. Box 2086 Zanesville, Ohio 43702-2086