

W. J. Biedenbach & Associates

SURVEYING & MAPPING
3120 USA LANE
ZANESVILLE, OHIO 43701
(614) 453-4850

*Eriger's
Copy*

Being a part of the Southeast Quarter of Section 16, Town-
ship three, Range nine, United States Military District,
Township, Muskingum County, Ohio and being further described
follows:

Beginning at 5" x 10" stone marking the Southeast Corner of
said Southeast Quarter of Section 16; thence North 88 degrees
14 minutes 30 seconds West 1130.88 feet to a point; thence North
01 degree 51 minutes 57 seconds East 330.00 feet to a point;
thence North 88 degrees 14 minutes 30 seconds West 198.00 feet
to a point; thence South 01 degree 51 minutes 57 seconds west
330.00 feet to a point marked by a 5/8 inch rebar set; thence
North 88 degrees 43 minutes 43 seconds West 1190.79 feet to a
point marked by an existing 5/8 inch rebar, said point being the
Southeast Corner of a 1.656 acre tract owned by C. A. Cannon
and Elizabeth A. Cannon; thence North 08 degrees 39 minutes
45 seconds East 142.51 feet along the east line of said Cannon
property to a point marked by an existing 5/8 inch rebar; thence
North 08 degrees 59 minutes 15 seconds West 51.07 feet along the
east line of said Cannon property to a point marked by an exist-
ing 5/8 inch rebar; thence North 21 degrees 45 minutes 21 seconds
West 86.13 feet along the easterly property line of said Cannon
property to a point marked by an existing 5/8 inch rebar; thence
North 50 degrees 44 minutes 38 seconds West 128.39 feet along the
easterly property line of said Cannon property to a point marked
by a 5/8 inch rebar set; thence North 01 degree 51 minutes 57
seconds East 1008.84 feet to a point marked by a 5/8 inch rebar
set; thence South 88 degrees 12 minutes 28 seconds East 1320.00
feet to a point marked by a 5/8 inch rebar set; thence South 01
degree 51 minutes 57 seconds West 257.24 feet to a point marked
by a 5/8 inch rebar set; thence South 80 degrees 04 minutes 06
seconds East 291.51 feet to a point marked by a 5/8 inch rebar
set; thence South 13 degrees 19 minutes 15 seconds West 379.09
feet to a point marked by a 5/8 inch rebar set; thence South 87
degrees 28 minutes 38 seconds East 1113.00 feet to a point marked
by a 5/8 inch rebar set; thence South 01 degree 38 minutes 23 sec-
onds West 661.79 feet to the place of beginning.

Containing 61.281 acres more or less, subject to all easements
of record.

I hereby certify the above description to be correct as pre-
pared by me, this 16th day of October 1984.

OFFICE COPY
W. J. Biedenbach
NOT RECORDABLE

W. J. BIEDENBACH
REG. SURVEYOR #5718

R. Murray 1916-9-84



DESCRIPTION APPROVED
for Auditor's transfer

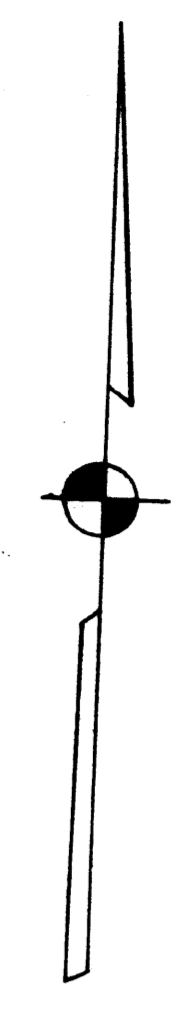
By _____

copy 882-7613

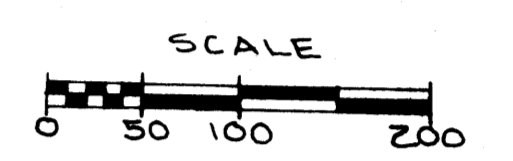
WAD

G. R. HASLOP
VOL. 686 - PG. 100

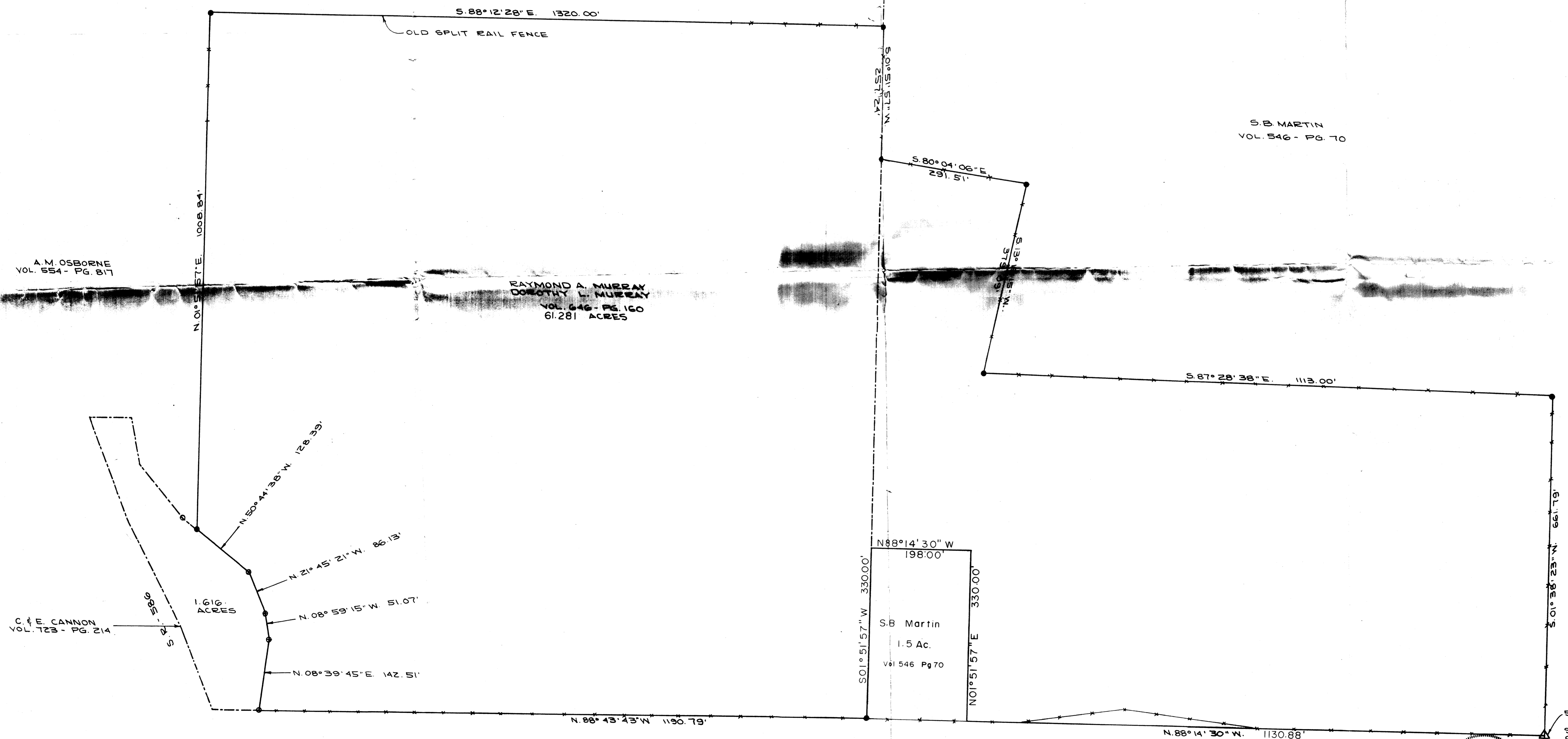
BEING A PART OF THE SE QTR OF SECTION 16, TWP 3,
R. 9, U. S. M. L. DISTRICT, JACKSON TWP. MUSKINGUM CO.
OHIO



1" = 100'



- ~ 5/8" REBAR FOUND
- ~ 5/8" REBAR SET



A. M. OSBORNE
VOL. 554 - PG. 817

RAYMOND A. MURRAY
DOROTHY L. MURRAY
VOL. 646 - PG. 160
61.281 ACRES

S. B. MARTIN
VOL. 546 - PG. 70

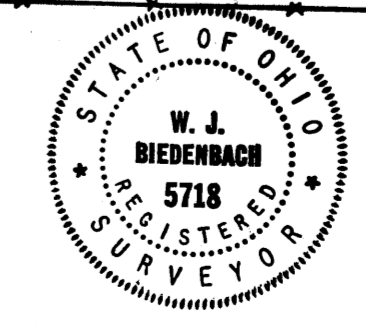
C & E. CANNON
VOL. 123 - PG. 214

S. B. Martin
1.5 Ac.
Vol 546 Pg 70

DESCRIPTION APPROVED
for Auditor's transfer
By *W. J. Biedenbach*
10-18-81

5" x 10" STONE
SOUTH EAST CORNER OF
SECTION 16.

J. & H. Fairall



I HEREBY CERTIFY THE ABOVE PLAT
AND SURVEY TO BE CORRECT AS
PREPARED BY ME THIS 10TH DAY
OF OCTOBER 1981
OFFICE COPY
NOT RECORDABLE
W. J. BIEDENBACH
REG. SURVEYOR 5718

W. J. BIEDENBACH & ASSOC. Surveying & Mapping 3120 Lee Ln. Zanesville, Ohio 43701 (614) 483-6890	
DRAWN BY: T. T.	DATE: 10-17-81
SCALE: 1" = 100'	
JOB NO. 1936	