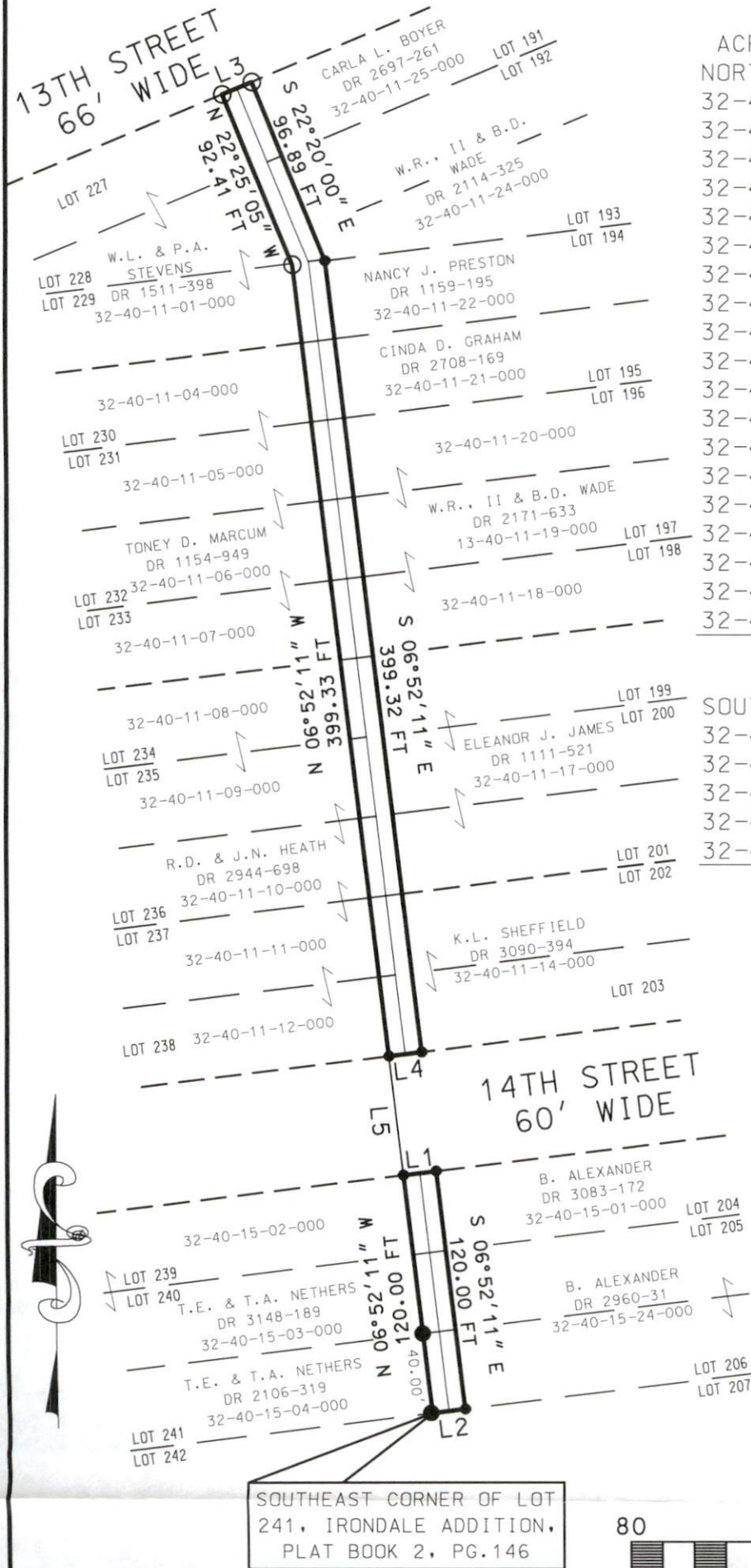


VACATION OF A PORTION OF AN ALLEY IN IRONDALE
ADDITION, PLAT BOOK 2, PAGE 146

STATE OF OHIO, MUSKINGUM COUNTY, JEFFERSON TOWNSHIP, PART OF IRONDALE
ADDITION TO TOWN OF DRESDEN, O., QUARTER TOWNSHIP 4, TOWNSHIP 3
NORTH, RANGE 8 WEST, UNITED STATES MILITARY LANDS



ACREAGE TO BE ADDED TO PARCEL NOS.
NORTH OF 14TH STREET

32-40-11-01-000	±0.02493	ACRES
32-40-11-04-000	±0.00763	ACRES
32-40-11-05-000	±0.00763	ACRES
32-40-11-06-000	±0.00763	ACRES
32-40-11-07-000	±0.00763	ACRES
32-40-11-08-000	±0.00763	ACRES
32-40-11-09-000	±0.00763	ACRES
32-40-11-10-000	±0.00763	ACRES
32-40-11-11-000	±0.00763	ACRES
32-40-11-12-000	±0.00763	ACRES
32-40-11-14-000	±0.01526	ACRES
32-40-11-17-000	±0.02289	ACRES
32-40-11-18-000	±0.00763	ACRES
32-40-11-19-000	±0.00763	ACRES
32-40-11-20-000	±0.00763	ACRES
32-40-11-21-000	±0.00763	ACRES
32-40-11-22-000	±0.00763	ACRES
32-40-11-24-000	±0.00967	ACRES
32-40-11-25-000	±0.00763	ACRES

SUBTOTAL 1 0.1872 ACRES

SOUTH OF 14TH STREET

32-40-15-02-000	+0.00763	ACRES
32-40-15-03-000	±0.00763	ACRES
32-40-15-04-000	±0.00763	ACRES
32-40-15-24-000	±0.01526	ACRES
32-40-15-01-000	±0.00763	ACRES

SUBTOTAL 2 ±0.04578 ACRES

SUBTOTAL 1	±0.1872	ACRES
SUBTOTAL 2	±0.04578	ACRES
TOTAL	±0.23298	ACRES

DESCRIPTION

APPROVED

By: DRP 12-19-2023

LINE TABLE

#	DIRECTION	DISTANCE
L1	N 83°04'50" E	16.61 FT
L2	S 83°04'50" W	16.61 FT
L3	N 67°28'21" E	16.15 FT
L4	S 83°04'50" W	16.61 FT
L5	N 06°52'11" W	60.00 FT

MUSKINGUM COUNTY
ENGINEERS OFFICE

155 REHL ROAD
ZANESVILLE, OHIO 43701
(740) 454-0155



80 0 80

Scale: 1" = 80'

LEGEND

- IRON PIPE FOUND
- IRON PIN FOUND
- POINT

OFFICE COPY
NOT RECORDABLE

DATE 12/11/23

BASIS OF BEARING:

BEARINGS ARE BASED ON NAD 83, OHIO SOUTH
ZONE, STATE PLANE COORDINATES AS PER GPS
OBSERVATIONS FROM MUSKINGUM COUNTY
ENGINEER GPS MONUMENT - ROSE.

PERTINENT DOCUMENTS AND SURVEYS USED:

1. DEED REFERENCES SHOWN
2. TAX MAPS
3. SURVEY RECORDS FOUND IN THE
MUSKINGUM COUNTY ENGINEERS OFFICE,
ZANESVILLE, OHIO.