

Being a part of Quarter Township 2, Township 2, Range 7, United States Military Lands, Madison Township, Muskingum County, Ohio and being further described as follows:

Commencing at a point marked by an existing concrete Monument at 30 feet left of station 10+53.31 at State Route 666 as shown on the centerline plat as recorded in plat book volume 14, page 61, of the Muskingum County Plat Records; thence North 80 degrees 48 minutes 00 seconds East 30.00 feet to a point in the center of said State Route 666; thence South 09 degrees 11 minutes 54 seconds East 3.51 feet to a point in the center of said State Route 666 at the intersection of relocated Township Road 395, said point being the place of beginning of this tract; thence following the center of said Township Road 395 (Old Ferry Road) the next 10 courses and distances:

- 1) South 79 degrees 11 minutes 53 seconds East 86.19 feet to a point,
 - 2) with a curve to the right having a radius of 60.00 feet (chord bearing South 43 degrees 41 minutes 54 seconds East 69.69 feet) an arc distance of 74.35 feet to a point;
 - 3) South 08 degrees 12 minutes 05 seconds East 98.00 feet to a point,
 - 4) with a curve to the left having a radius of 150.78 feet (chord bearing South 40 degrees 16 minutes 03 seconds East 160.00 feet) an arc distance of 168.66 feet to a point;
 - 5) South 72 degrees 47 minutes 24 seconds East 92.77 feet to a point,
 - 6) South 85 degrees 02 minutes 51 seconds East 66.73 feet to a point, said point being North 00 degrees 19 minutes 23 seconds East 20.30 feet from a point marked by an iron pin;
 - 7) North 76 degrees 13 minutes 38 seconds East 93.10 feet to a point,
 - 8) North 07 degrees 17 minutes 42 seconds East 31.51 feet to a point,
 - 9) North 56 degrees 17 minutes 38 seconds East 51.20 feet to a point,
 - 10) North 45 degrees 04 minutes 41 seconds East 08.49 feet to a point;
- thence leaving the said center of Township Road number 395 South 29 degrees 25 minutes 30 seconds East 98.99 feet to a point marked by an iron pin, passing a point marked by an iron pin at 18.09 feet; thence South 19 degrees 15 minutes 24 seconds West 107.50 feet to a point marked by an iron pin; thence South 52 degrees 20 minutes 50 seconds West 04.18 feet to a point marked by an iron pin; thence South 73 degrees 45 minutes 08 seconds West 227.00 feet to a point marked by an iron pin; thence South 84 degrees 48 minutes 51 seconds West 235.82 feet to a point marked by a rail road spike in the center of State Route 666; thence South 79 degrees 16 minutes 22 seconds West 93.25 feet to a point on the low water line of the Muskingum River, passing a point marked by an iron pin at 83.55 feet; thence North 16 degrees 07 minutes 03 seconds West 316.17 feet along the said low-water line of the Muskingum River to a point; thence North 09 degrees 45 minutes 52 seconds West 220.51 feet along the said low-water line of the Muskingum River to a point; thence leaving the said low-water line north 80 degrees 14 minutes 08 seconds East 92.56 feet to the place of beginning.

Containing 4.413 more or less acres, subject to all legal road right-of-ways of State Route 666 and Township Road 395.

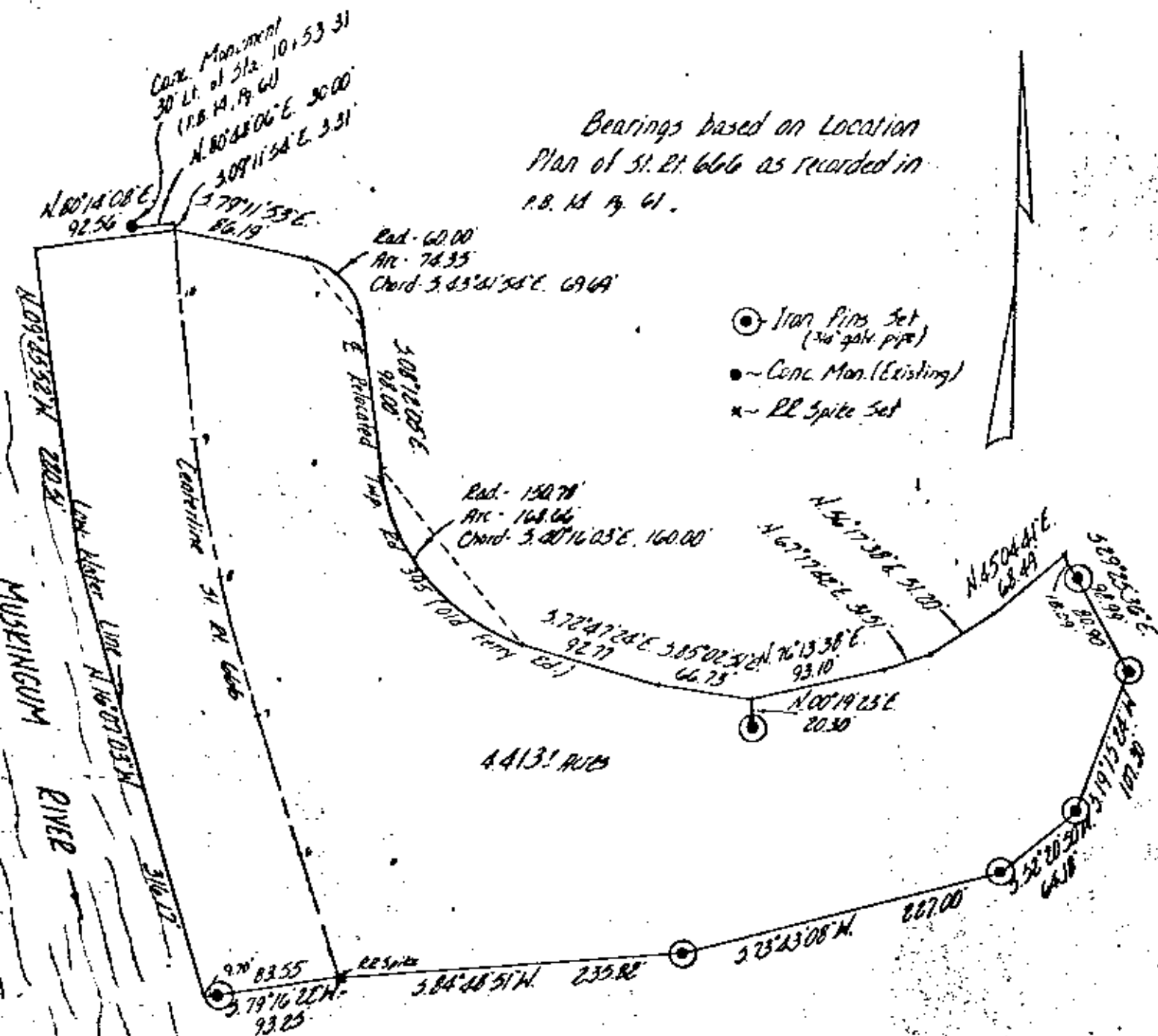
I hereby certify the above description to be correct as prepared by me this 1st day of December 1981.

OFFICE COPY
NOT RECORDABLE
W. J. BIEDENBACH

REG. SURVEYOR #5718

936-10-81

DESCRIPTION APPROVED
for Auditor's transfer
M. J. Biedenkopf



Being a part of Quarter Township 2, Township 2, Range 7, United States Military Lands, Madison Township, Muskingum County, Ohio.

I hereby certify the above plat and survey to be correct as prepared by me on the 11th day of December 1981.

**OFFICE COPY
NOT RECORDABLE**

W. J. BIEDENBACH
REG. SURVEYOR #5718

DESCRIPTION APPROVED
for Auditor's transfer

[Signature] 12228

W. J. BIEDENBACH & ASSOC.
Surveying & Mapping
3120 Lisa Ln. Zanesville, Ohio 43701
(614) 453-4850

Drawn by: <i>MD</i>	Date: 11-24-81
Scale: 1"=100'	Checked by: <i>MD</i>
Job No: 936-10-81	Client: <i>Lexell</i>