

P.S. N/A

LANDMARK SURVEYS

EARL R. DONAKER, P.S.

727 Cambridge Road
Coshocton, Ohio 43812

(614) 623-0993
1-800-842-3264

NORVAL C. ROLLINS 151.677 Acres



Being 151.677 acres, more or less, (101.975 acres, all of parcel 42-40-03-05, 9.108 acres in Lot 40, 92.866 acres in Lot 39), (49.703 acres, all of parcel 42-40-03-08, in Lot 38), in the third quarter of township 3 north, range 5 west, United States Military Lands, in the township of Monroe, in the county of Muskingum, in the State of Ohio, and more particularly described as follows:

Beginning at a stone found at the southeast corner of Lot 39, said stone found being the TRUE POINT OF BEGINNING;

thence, with the east line of Lot 38 and with the property line of Jerry M. Sherrick, 819/129, S.02°32'33"W. 535.06' to a 5/8" steel pin set;

thence, through the property of Norvall C. Rollins, 438/599, 1024/45, the following 3 courses:

- 1. thence, S.79°19'16"W. 736.00' to a 5/8" steel pin set;
- 2. thence, continuing S.79°19'16"W. 1539.00' to a 5/8" steel pin set;
- 3. thence, continuing S.79°19'16"W. 27.83' to a point in Bell Rd., TR 169;

thence, with Bell Rd., TR 169, and with the property line of Henry D. & Sondra L. Eckhardt, 931/187, the following 8 courses:

- 1. thence, N.53°16'39"W. 26.23' to a point;
- 2. thence, N.65°29'10"W. 29.64' to a point;
- 3. thence, N.78°15'10"W. 32.65' to a point;
- 4. thence, S.89°34'05"W. 43.54' to a point;
- 5. thence, S.84°38'23"W. 87.93' to a point;
- 6. thence, N.89°22'54"W. 34.41' to a point;
- 7. thence, N.78°01'42"W. 41.62' to a point;
- 8. thence, N.69°28'42"W. 69.07' to a railroad spike found;

thence, with the Adams/Monroe township line the following 6 courses:

- 1. thence, N.01°56'07"E. 20.00' to a 5/8" steel pin set;
- 2. thence, continuing N.01°56'07"E. 316.57' to a stone found;
- 3. thence, N.02°39'17"E. 686.41' to a point at the northwest corner of Lot 38 of Monroe Township;
- 4. thence, continuing N.02°39'17"E. 630.83' to an 1" rebar found at the northeast corner of section 20 of Adams Township;
- 5. thence, continuing N.02°39'17"E. 934.73' to a point at the northwest corner of Lot 39 of Monroe Township;
- 6. thence, continuing N.02°39'17"E. 154.44' to a 5/8" steel pin set;

thence, with the property line of Ruth M. Bontrager, 605/149, S.87°21'37"E. 2567.79' to a 5/8" steel pin set;

thence, with the east line of Lots 40, & 39, and with the property line of Jerry M. Sherrick, 819/129, the following 2 courses:

- 1. thence, S.01°40'12"W. 154.44' to a point at the southeast corner of Lot 40;
- 2. thence, continuing S.01°40'12"W. 1565.81' to the TRUE POINT OF BEGINNING, containing 151.677 acres, more or less, including public road right-of-way and is subject to all easements, rights-of-way, or restrictions, whether recorded or implied.

Bearings are based on Deed Book 931, page 187, and are for angular calculations only. N.01°19'58"E. All 5/8" steel pins set are 30" long.

Pertinent documents: tax maps: 42-40, 42-70, 02-60; deeds: 438/599, 1024/45, 754/84, 605/149, 819/129, 514/524, 1063/341, 1041/185, 931/187, B92/169; surveys by: Jerry Lee Gamble, W.J. Biedenbach, Joseph T. Spilker.

Prior deed: 438/599.

Description and plat by Landmark Surveys, Earl R. Donaker, Professional Surveyor, #7142, from a survey of the premises in the month of September, in the year of our Lord one thousand nine hundred and ninety-two.

DESCRIPTION APPROVED
FOR AUDITOR'S TRANSFER

BY J.L. Gamble
9-21-92

**OFFICE COPY
NOT RECORDABLE**

THIS PROPERTY IS SUBJECT TO ALL EASEMENTS, RIGHTS-OF-WAY OR RESTRICTIONS, WHETHER RECORDED OR IMPLIED.

727 Cambridge Road
Coshocton, Ohio 43812

LANDMARK SURVEYS
EARL R. DONAKER, P.S.

tel: (614) 623-0933
1-800-842-3264

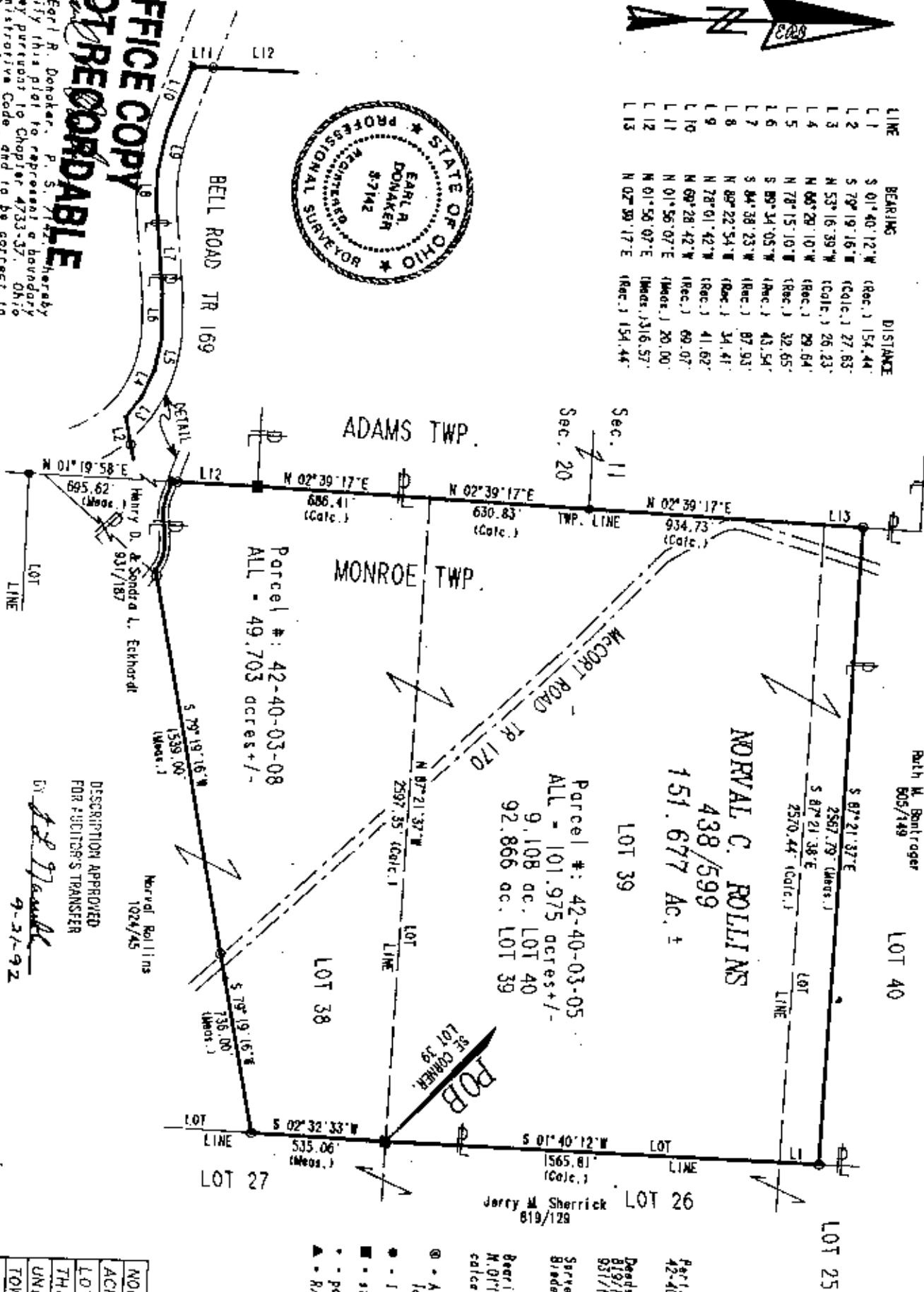


LINE	BEARING	DISTANCE
L 1	S 01°40'12"W (Rec.)	154.44'
L 2	S 70°19'16"W (Calc.)	27.63'
L 3	N 53°16'39"W (Calc.)	26.23'
L 4	N 66°29'10"W (Rec.)	29.64'
L 5	N 78°15'10"W (Rec.)	32.65'
L 6	S 89°34'05"W (Rec.)	43.54'
L 7	S 84°38'23"W (Rec.)	87.93'
L 8	N 89°22'54"W (Rec.)	34.41'
L 9	N 78°01'42"W (Rec.)	41.62'
L 10	N 69°28'42"W (Rec.)	69.07'
L 11	N 01°56'07"E (Meas.)	20.00'
L 12	N 01°56'07"E (Meas.)	1316.57'
L 13	N 02°39'17"E (Rec.)	154.44'



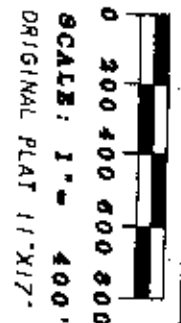
OFFICE COPY
NOT RECORDBABLE

1. Earl R. Donaker, P.S., 7142, hereby certify this plat to represent a boundary survey pursuant to Chapter 4733-37, Ohio Administrative Code and to be correct to the best of my knowledge and belief.



DESCRIPTION APPROVED
FOR BUYER'S TRANSFER
By *[Signature]*
9-27-92

"Remove not the old landmark." Records 28.10



Pertinent documents: Tax maps: 42-40, 42-70, 02-60

Deeds: 438/599, 1024/45, 754/84, 605/149, 819/129, 514/524, 1063/341, 1041/185, 931/187, 892/169

Surveyed by: Jerry Lee Goshale, M.J. Bredenbach, Joseph T. Spilker

Bearings are based on D.B. 931/187, N. 01°19'58"E, and are for regular calculations only.

- ⊙ - All 5/8" steel pins set are 30" long, plastic cap marked, END 7142.
- - 1" rebar found
- - stake found w/cross
- - point
- ▲ - R/R spike found

NORVALL C. ROLLINS, 438/599
ACRES: 151.677
LOT: PART 38 & 40, ALL 39
THIRD QUARTER, T 3N, R 5W,
TOWNSHIP: MONROE
COUNTY: MUSKINGUM
OHIO
DATE: SEPTEMBER, 1992