

ALAN DONAKER SURVEYING

Alan Donaker, P.S.

19849 TR 383

Walhonding, OH 43843

Fax: (740) 327-1083

Phone: (740) 327-7001

(To be Transferred to Adjoiner Only, Not to be used as a separate building site or transferred as an independent parcel in the future without planning commission approval)

Being 1.302 acres, more or less, in Lot 9, Third Quarter, Township 3 North, Range 5 West, United States Military Lands, in the Township of Monroe, in the County of Muskingum, in the State of Ohio, conveyed to Aaron and Martha Hostetler, OR 1522-822 (part), Parcel No. 42-50-03-19-001 (part) and more particularly described as follows:

Commencing at a stone of record at the Southwest corner of Lot 9;

thence, with the property line of Barbara Shields Cavinee, Trustee, DR 2589-270, S. 88° 11' 17" W. a distance of 236.52' to a 12" cherry tree of record;

thence, with the property line of Aaron S. and Martha A. Hostetler, John A. and Lori J. Hostetler and Edwin A. and Amanda H. Hostetler, DR 2702-637, the following 3 courses:

1. thence, N. 00° 37' 34" W. a distance of 1914.08' to a 3/8" rebar of record;
2. thence, S. 89° 22' 26" W. a distance of 162.13' to a 3/8" rebar of record;
3. thence, N. 07° 56' 29" E. a distance of 378.53' to a 3/8" rebar of record;

thence, with the property line of Mervin E. and Amanda M. Petersheim, DR 1680-228, the following 3 courses:

1. thence, N. 79° 34' 56" E. a distance of 285.36' to a 3/8" rebar of record;
2. thence, N. 29° 29' 06" E. a distance of 467.90' to a 3/8" rebar of record;
3. thence, N. 29° 29' 06" E. a distance of 15.00' to a point in the centerline of Castor Road;

thence, with the centerline of Castor Road, the following 13 courses:

1. thence, S. 59° 23' 41" E. a distance of 136.43' to a point;
2. thence, S. 59° 46' 20" E. a distance of 114.30' to a point;
3. thence, S. 64° 51' 04" E. a distance of 149.18' to a point;
4. thence, S. 63° 46' 53" E. a distance of 105.78' to a point;
5. thence, S. 59° 53' 47" E. a distance of 116.12' to a point;
6. thence, S. 56° 08' 08" E. a distance of 222.20' to a point;
7. thence, S. 50° 02' 31" E. a distance of 44.00' to a point;
8. thence, S. 42° 33' 00" E. a distance of 52.74' to a point;
9. thence, S. 36° 24' 17" E. a distance of 168.46' to a point;
10. thence, S. 37° 08' 19" E. a distance of 57.18' to a point;
11. thence, S. 37° 49' 35" E. a distance of 39.23' to a point;
12. thence, S. 37° 49' 35" E. a distance of 147.31' to a point;
13. thence, S. 36° 27' 00" E. a distance of 57.07' to a point, said point being the TRUE POINT OF BEGINNING;

thence, continuing with the centerline of Castor Road, the following 3 courses:

1. thence, S. 36° 27' 00" E. a distance of 36.64' to a point;
2. thence, S. 27° 21' 30" E. a distance of 46.33' to a point;

42-50-03-19-011 A

3. thence, S. $32^{\circ} 03' 28''$ E. a distance of 55.79' to a point;

thence, through the property of Aaron and Martha Hostetler, OR 1522-822, the following 4 courses:

1. thence, S. $52^{\circ} 46' 54''$ W. a distance of 19.17' to a $\frac{3}{8}$ " rebar set;
2. thence, S. $52^{\circ} 46' 54''$ W. a distance of 314.36' to a $\frac{3}{8}$ " rebar set;
3. thence, N. $37^{\circ} 12' 26''$ W. a distance of 298.68' to a $\frac{3}{8}$ " rebar set;
4. thence, N. $53^{\circ} 26' 03''$ E. a distance of 60.48' to a $\frac{3}{8}$ " rebar found;

thence, with the property line of Jonny A. Hostetler, Edwin Hostetler and Aaron Hostetler, DR 2643-742, the following 2 courses:

1. thence, S. $37^{\circ} 12' 26''$ E. a distance of 160.14' to a $\frac{3}{8}$ " rebar found;
2. thence, N. $52^{\circ} 46' 54''$ E. a distance of 286.47' to the TRUE POINT OF BEGINNING, containing 1.302 acres, more or less, including public road right-of-way and is subject to all easements, rights-of-way, or restrictions, whether recorded or implied.

Bearings are based on OR 1522-822 and are for angular calculations only.

All $\frac{3}{8}$ " rebars set are 30" long with plastic cap marked "AMD 8050".

Pertinent Documents: Tax Map and all Deeds shown.
Flood Plain panel #390425 0075 C, Zone X

Surveys by: Alan Donaker, Terry J. Finley

Description and plat by Alan Donaker, Professional Surveyor, #8050, from a survey of the premises on April 17, in the year of our Lord Two Thousand Seventeen.

Alan Donaker 4/17/17
**OFFICE COPY
NOT RECORDABLE**

DESCRIPTION
APPROVED
By: *[Signature]*



APPROVED
MUSKINGUM COUNTY
PLANNING COMMISSION DIRECTOR

4/25/17
Date

Fee Paid

42-50-03-19-001 B

This property is subject to all easements, rights-of-way or restrictions, whether recorded or implied.

ALAN DONAKER SURVEYING
19849 TR 383
Walhonding, OH 43843
Telephone: (740) 327-7001
Fax: (740) 327-1083

Pertinent Documents: Tax Map
All Deeds and Plats as shown

Surveys by: Alan Donaker,
Terry J. Finley

Bearings are based on
DR 1522-822 and are for
angular calculations only

Firm# 390425 0075C ZONE X

- All 5/8" rebars set are 30" long with plastic cap marked "AMD" 8050
- 5/8" rebar of record or as marked
- ▲ 12" cherry tree of record
- Stone of record
- △ Point

APPROVED
MUSKINGUM COUNTY
PLANNING COMMISSION DIRECTOR

Fee Paid
Date

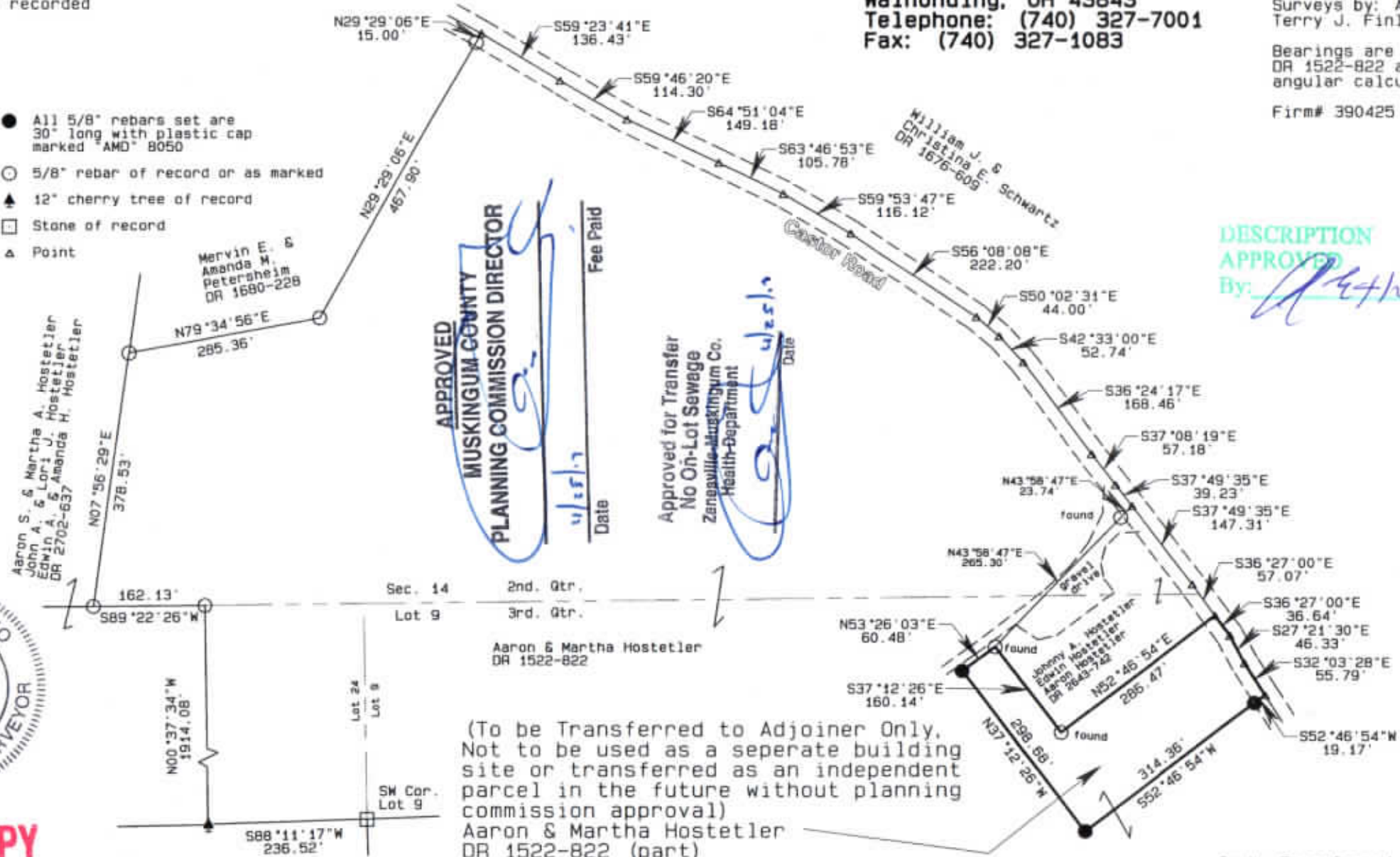
Approved for Transfer
No On-Lot Sewage
Zanesville-Muskingum Co.
Health Department

DESCRIPTION
APPROVED
By: *[Signature]*



OFFICE COPY
NOT RECORDABLE

I, Alan Donaker, P.S. 8050, hereby certify this plat to represent a boundary survey pursuant to Chapter 4733.37 Ohio Administrative Code and to be correct to the best of my knowledge and belief.



(To be Transferred to Adjoiner Only,
Not to be used as a separate building
site or transferred as an independent
parcel in the future without planning
commission approval)
Aaron & Martha Hostetler
DR 1522-822 (part)
#42-50-03-19-001 (part)
1.302 Ac. +/-

To be Transferred to Adjoiner Only)
Aaron & Martha Hostetler
DR 1522-822
1.302 Ac. +/-
Lot 9, Third Qtr.
T3N, R5W
United States Military Lands
Monroe Township
Muskingum County, Ohio
Date: April 17, 2017

