

SITUATED IN

The State of Ohio, County of Muskingum,
Township of Newton, Southeast Quarter of
Section 17, Township 15, Range 14, Congress
Lands East of the Scioto River.

REFERENCES

* As Noted on Plat
www.muskingumcountyauditor.org
www.mceo.org
http://recorder.muskingumcounty.org

BASIS OF BEARING

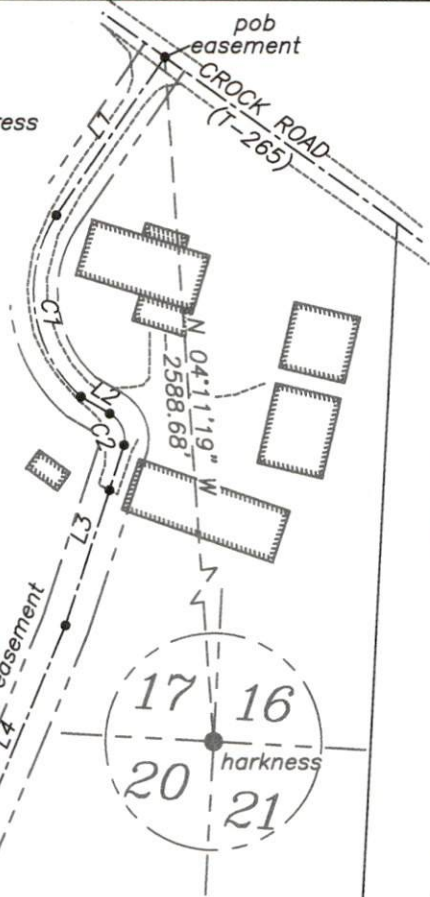
Bearings are based on State Plane
Grid Coordinates, NAD83, Ohio South,
per GPS Observation.

LEGEND

- Unmarked Point
- Iron Pin Found
- ⊗ Roof Bolt Found
- △ PK Nail Set
- ⊠ Stone Found
- ⌵ Property Hook

APPROVED
MUSKINGUM COUNTY
PLANNING COMMISSION DIRECTOR

CURVE TABLE				
CURVE	RADIUS	ARC LENGTH	CHORD LENGTH	CHORD BEARING
C1	72.64'	103.64'	95.07'	S 07°52'06" E
C2	14.97'	19.16'	17.88'	S 25°01'50" E
C3	241.81'	65.20'	65.00'	S 16°37'02" W
C4	22.96'	24.06'	22.97'	S 24°55'45" E



DESCRIPTION
APPROVED

By: MB 8-17-2023

LINE TABLE

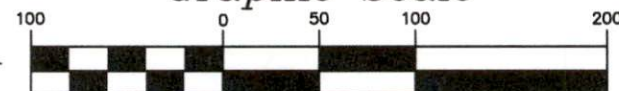
LINE	BEARING	DISTANCE
L1	S 34°36'07" W	99.21'
L2	S 59°41'49" E	17.34'
L3	S 18°00'45" W	98.27'
L4	S 22°39'21" W	129.91'
L5	S 09°34'06" W	82.20'
L6	S 04°01'39" W	124.43'
L7	S 54°13'00" E	43.55'

Part of: 47-44-02-02-000
HEATHER R. MEREDITH, TRUSTEE
OR 2409-784
±1.783 Ac.

HEATHER R. MEREDITH, TRUSTEE
OR 2409-784

Approved For Transfer
No On-Lot Sewage
Date 8-10-23
Zanesville - Muskingum County
Health Department

Graphic Scale



(IN FEET)
1 inch = 100 ft.

OFFICE COPY

Brian Kelly McPeck
Reg. Surveyor No. 8517

This plat was prepared by McPeck Land Surveying, LLC
in accordance with Chapter 4733-37 of the Administrative Code,
and is intended to be used for the legal transfer of the property
described and does not intend to describe all or any easements of
record, nor encroachments unless otherwise intended.

**MCPECK
LAND
SURVEYING**
www.mcpecklandsurveying.com
email: brian@mcpecklandsurveying.com
1705 East Pike, * Zanesville, Oh 43701 * 740.704.6073