

Reduced copy, not to scale, Larger
copy available in the Muskingum
County Engineer's Map Dept.

ROAD DEDICATION PLAT FOR PROSPERITY PARKWAY

STATE OF OHIO, MUSKINGUM COUNTY, PERRY TOWNSHIP,
PART OF QUARTER TOWNSHIP 3, TOWNSHIP 1 NORTH,
RANGE 6 WEST, UNITED STATES MILITARY LANDS
PART OF PARCEL #: 51-70-03-13-000 ± 8.65 ACRES

MUSKINGUM COUNTY COMMISSIONERS

ACCEPTED AND APPROVED UNDER THE REVISED CODE OF THE STATE OF OHIO (O.R.C. 5553.31)

JAMES W. PORTER

MOLLIE CROOKS

CINDY CAMERON

DATE:

SUBMITTED FOR ACCEPTANCE AND APPROVAL

CLERK OF COUNTY COMMISSIONERS

DESCRIPTION

APPROVED

By: MB 12-28-2022

DEDICATION

I, MATT ABBOTT, EXECUTIVE DIRECTOR OF THE ZANESVILLE-MUSKINGUM COUNTY
PORT AUTHORITY, WHICH HAS ALL RIGHTS, TITLE AND INTEREST IN THE REAL
ESTATE SHOWN, HEREBY CERTIFY THAT I HAVE CAUSED THE SAME TO BE SURVEYED
AND PLATTED INTO THE ROADS AS SHOWN, AND DO HEREBY DEDICATE THEM TO THE PUBLIC.

MATT ABBOTT

ACKNOWLEDGEMENT

STATE OF OHIO
COUNTY OF MUSKINGUM

THE FOREGOING INSTRUMENT WAS ACKNOWLEDGED BEFORE ME, THIS 12 DAY OF
2022, BY MATT ABBOTT, EXECUTIVE DIRECTOR OF THE ZANESVILLE-
MUSKINGUM COUNTY PORT AUTHORITY, A POLITICAL SUBDIVISION OF OHIO, ON BEHALF
OF SAID PORT AUTHORITY.

MUSKINGUM COUNTY ENGINEER

ACCEPTED AND APPROVED UNDER THE REVISED CODE OF THE STATE OF OHIO (O.R.C. 5553.31)

MARK J. EICHER, P.E., P.S.
COUNTY ENGINEER

DATE

LINE TABLE

NUMBER	DIRECTION	DISTANCE
L1	S 26° 35' 44" E	10.00 FT
L2	N 75° 29' 34" W	15.00 FT

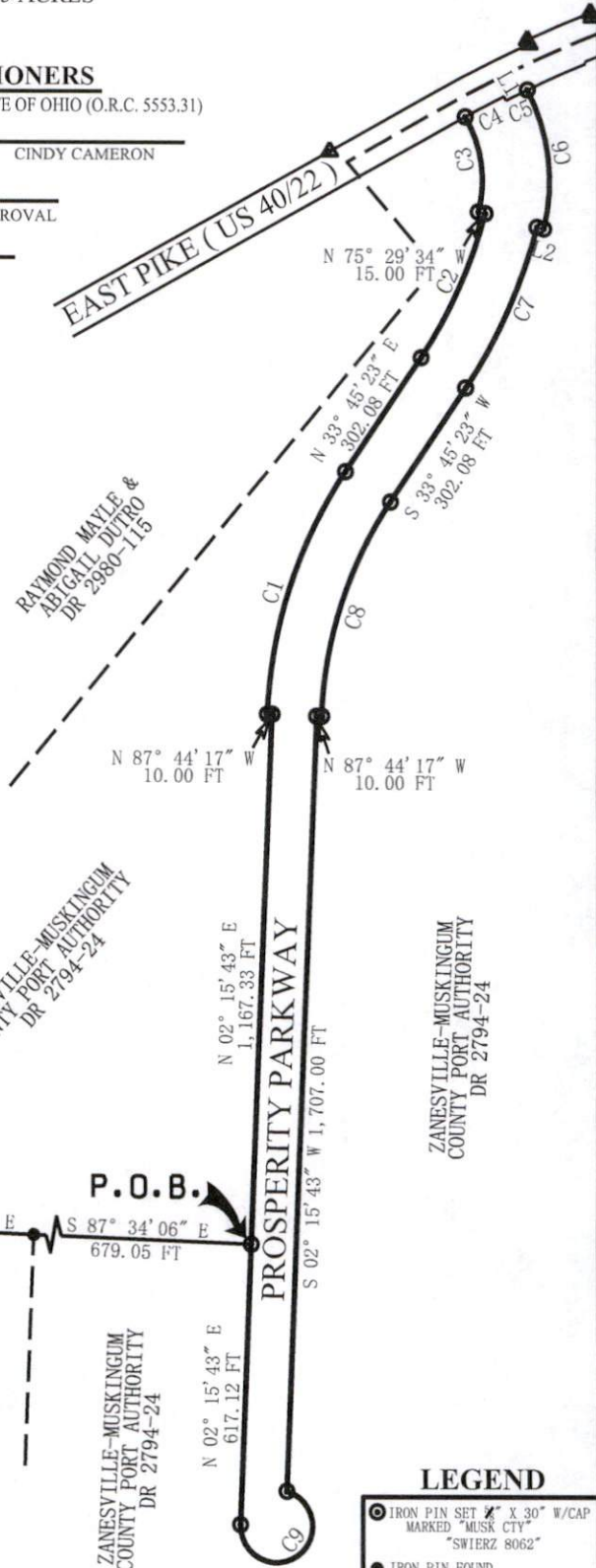
CURVE TABLE

NUMBER	CHD BRG	CHD	RADIUS	DELTA ANGLE
C1	N 18° 00' 33" E	561.79 FT	1,035.00 FT	31° 05' 59"
C2	N 24° 07' 55" E	347.76 FT	1,040.00 FT	19° 14' 57"
C3	N 08° 04' 43" W	211.24 FT	275.00 FT	45° 10' 21"
C4	N 62° 24' 43" E	97.87 FT	2,824.93 FT	01° 59' 06"
C5	N 63° 56' 27" E	52.70 FT	2,814.93 FT	01° 04' 22"
C6	S 06° 45' 59" E	308.40 FT	425.00 FT	42° 32' 51"
C7	S 24° 07' 55" W	387.88 FT	1,160.00 FT	19° 14' 57"
C8	S 18° 00' 33" W	496.65 FT	915.00 FT	31° 29' 40"
C9	S 54° 30' 03" W	126.49 FT	80.00 FT	104° 28' 34"

MUSKINGUM CO.
ENGINEER'S OFFICE

155 REHL ROAD
ZANESVILLE, OHIO 43701
(740) 454-0155

BASIS OF BEARINGS:
BEARINGS SHOWN
HEREIN ARE BASED
ON NAD 83 (2011), OHIO
SOUTH ZONE, STATE
PLANE COORDINATES.



LEGEND

- IRON PIN SET X 30" W/CAP MARKED "MUSK CTY" "SWIERZ 8062"
- IRON PIN FOUND
- ▲ ODOT MONUMENT FOUND
- POINT

CERTIFICATE OF SURVEYOR

DENIS P. SWIERZ, DOES HEREBY CERTIFY THAT THE WITHIN IS A CORRECT DEDICATION
PLAT OF PROSPERITY PARKWAY, SAID ROADWAY BEING IN THE TOWNSHIP OF
PERRY, COUNTY OF MUSKINGUM, STATE OF OHIO, AS SURVEYED BY HIM AND CONSISTS OF
8.65 ACRES AND BEING A PART OF THE PREMISES CONVEYED TO THE ZANESVILLE-
MUSKINGUM COUNTY PORT AUTHORITY IN DEED RECORDED 2794, PAGES 24-28

OFFICE COPY
NOT RECORDABLE

DENIS P. SWIERZ
REG. SURV. #8062

DATE