

35. thence S 06°48'33" W, 18.24 feet to a point;
36. thence S 09°43'19" W, 19.61 feet to a point;
37. thence S 77°04'49" E, 19.34 feet to a point;
38. thence S 23°48'02" W, 19.42 feet to a point;
39. thence leaving said run, S 00°52'52" W, 973.93 feet to an iron pin set;
40. thence S 47°17'21" W, 591.59 feet to an iron pin set on the mid section line;
41. thence with said mid section line, S 87°46'01" E, 794.87 feet to a point in the center of Buffalo Fork, passing an iron pin set at 722.90 feet;

thence with the center of said Buffalo Fork, being the common line of said Mock's lands and the lands now owned by the State of Ohio (DR 479-53) the following twenty-one (21) courses:

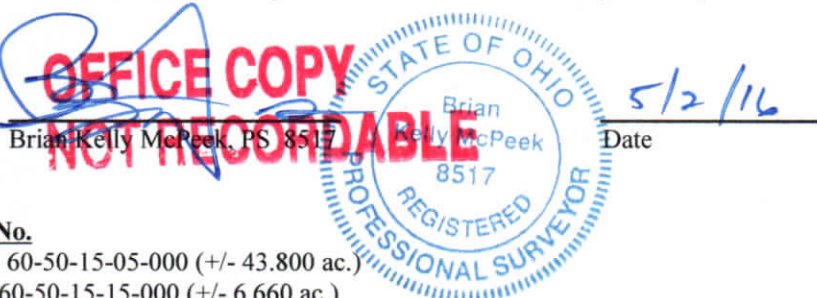
1. thence S 20°27'23" W, 48.31 feet to a point;
2. thence S 47°47'25" W, 263.40 feet to a point;
3. thence S 60°13'32" W, 299.70 feet to a point;
4. thence S 69°58'21" W, 206.33 feet to a point;
5. thence N 86°25'25" W, 80.20 feet to a point;
6. thence S 74°42'57" W, 215.87 feet to a point;
7. thence S 86°12'14" W, 132.23 feet to a point;
8. thence S 77°34'27" W, 195.86 feet to a point;
9. thence S 77°34'27" W, 30.82 feet to a point;
10. thence S 63°02'28" W, 81.38 feet to a point;
11. thence S 88°53'54" W, 65.05 feet to a point;
12. thence N 64°03'28" W, 51.46 feet to a point;
13. thence N 32°41'58" W, 240.76 feet to a point;
14. thence N 52°24'48" W, 119.95 feet to a point;
15. thence N 31°48'51" W, 79.47 feet to a point;
16. thence N 01°15'58" W, 113.21 feet to a point;
17. thence N 33°02'25" W, 183.50 feet to a point;
18. thence N 84°51'08" W, 69.69 feet to a point;
19. thence S 57°01'50" W, 137.89 feet to a point;
20. thence N 64°24'56" W, 114.39 feet to a point;
21. thence N 37°32'45" W, 75.98 feet to a point on the mid section line;

thence leaving said center of Buffalo Fork and going with said mid section line, S 87°50'30" E, 940.92 feet to the point of beginning, passing an iron pin set at 71.17 feet, containing a total of 62.065 acres more or less, subject to all legal highways and easements of record.

All bearings described herein are based on the Ohio State Plane Grid Coordinates, NAD83, Ohio South per GPS Observation.

All iron pins set are 5/8 inch by 30 inch steel rebar with plastic identification caps marked MCPEEK PS8517.

The above described 62.065 acre parcel is based on a field survey made by McPeck Land Surveying on April 5th, 2016.



Parcel No.

Part of : 60-50-15-05-000 (+/- 43.800 ac.)

All of : 60-50-15-15-000 (+/- 6.660 ac.)

All of : 60-50-15-17-000 (+/- 11.605 ac.)

DESCRIPTION
APPROVED
By: *Ad Htho16*

