

SITUATED IN

The State of Ohio, County of Muskingum,  
Springfield Township, Northeast Qtr. Sec. 1, T15, R14.

RE-SURVEY

BASIS OF BEARING

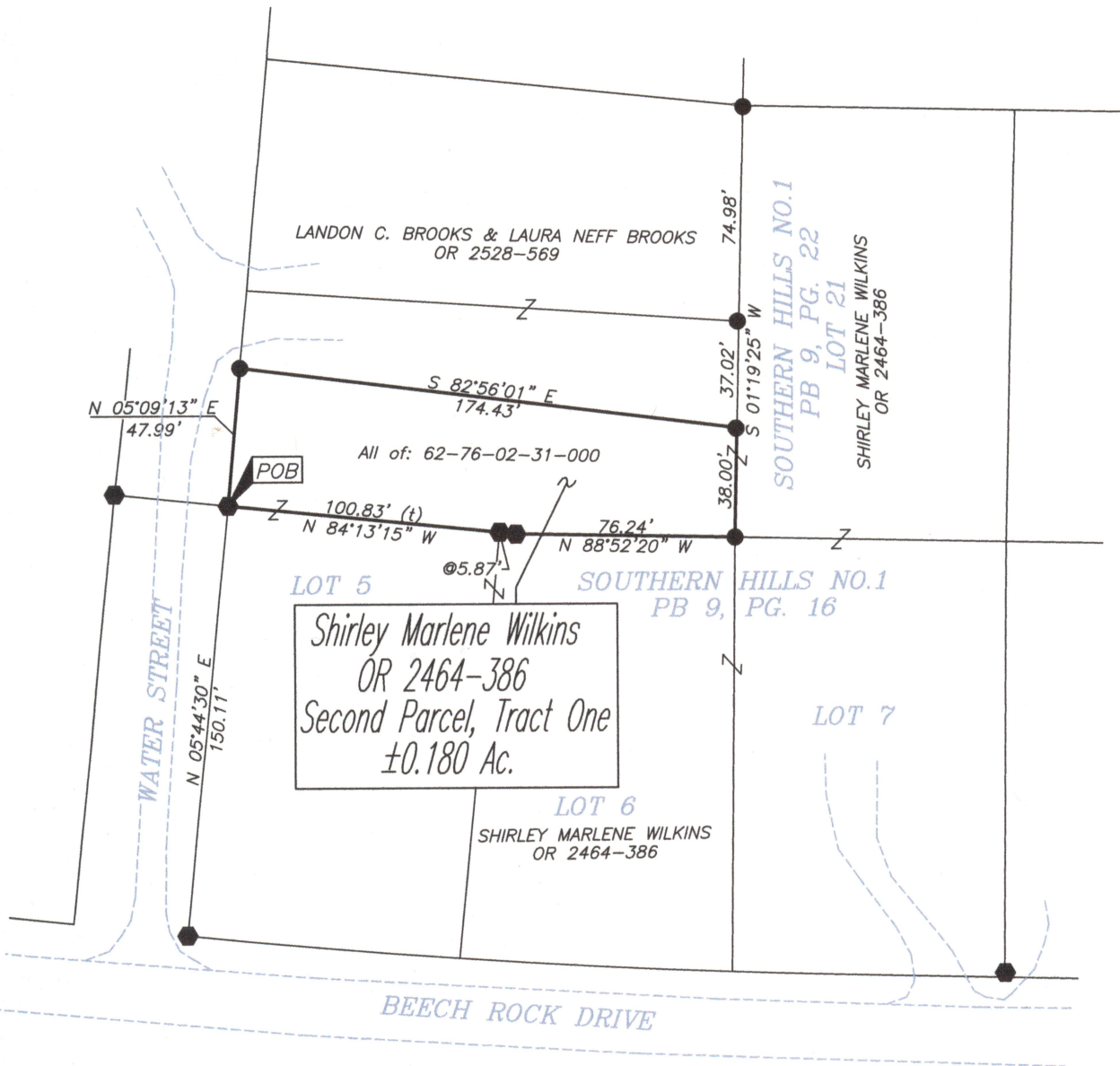
Bearings are based on State Plane Grid Coordinates,  
NAD83, Ohio South, per GPS Observation.

LEGEND

- Iron Pin Found
- Axle Found

REFERENCES

\* As Noted on Plat  
[www.muskingumcountyauditor.org](http://www.muskingumcountyauditor.org)  
[www.mceo.org](http://www.mceo.org)  
<http://recorder.muskingumcounty.org>  
Previous Surveys by: Harkness 2011

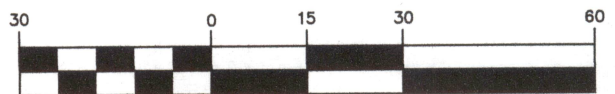


**DESCRIPTION**

**APPROVED**

By: BK 6/6/2019

**GRAPHIC SCALE**



( IN FEET )

1 inch = 60 ft.



**OFFICE COPY  
NOT RECORDABLE**

Brian Kelly McPeck  
Reg. Surveyor No. 8517

This plat was prepared by McPeck Land Surveying, LLC  
in accordance with Chapter 4733-37 of the Administrative Code,  
and is intended to be used for the legal transfer of the property  
described and does not intend to describe all or any easements of  
record, nor encroachments unless otherwise intended.



**MCPECK  
LAND  
SURVEYING**

[www.mcpeeklandsurveying.com](http://www.mcpeeklandsurveying.com)  
email: [brian@mcpeeklandsurveying.com](mailto:brian@mcpeeklandsurveying.com)  
340 Robin Hood Ln., \* Zanesville, Oh 43701 \* 740.704.6073