

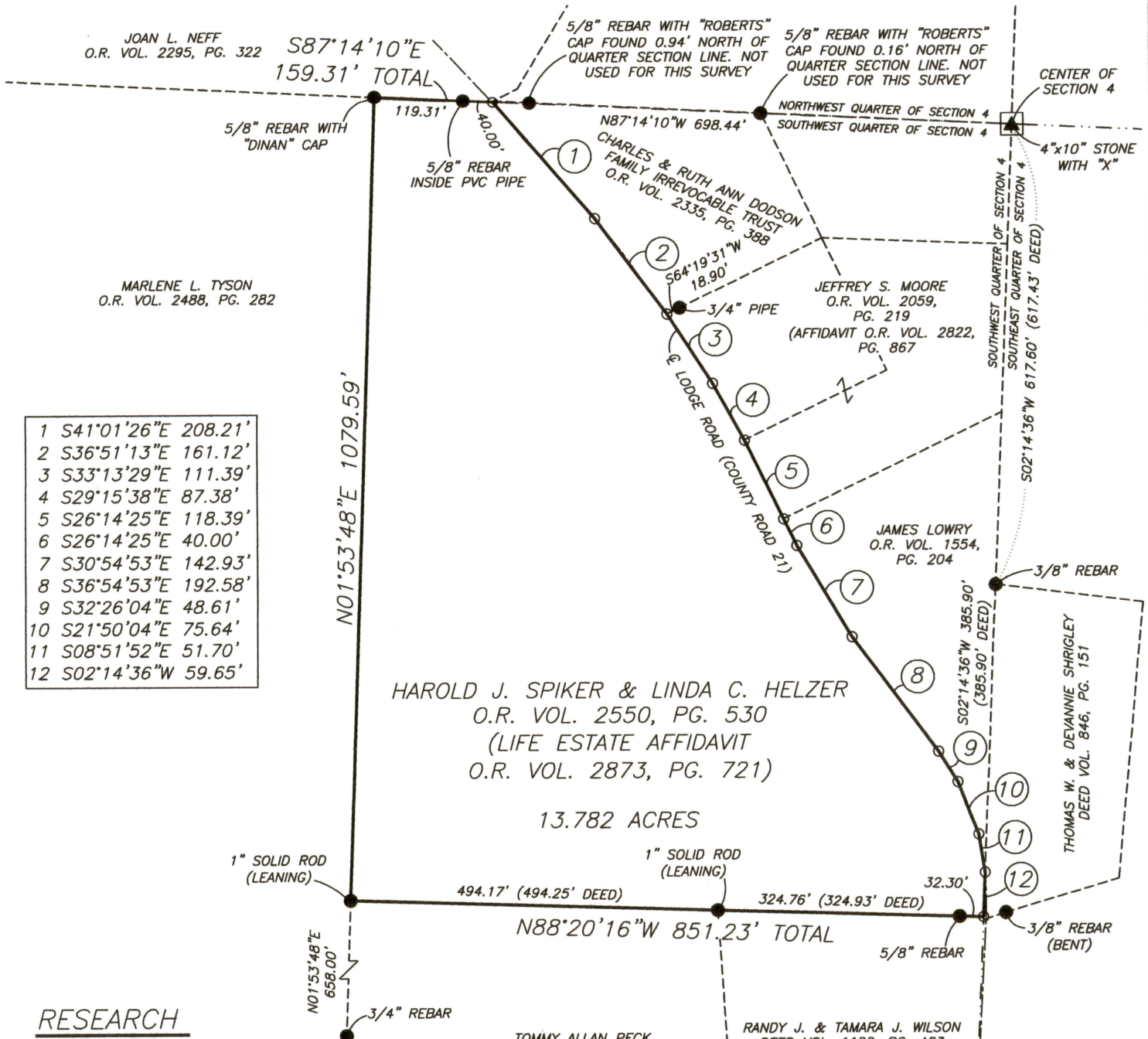
66-10-04-15-000 B

SURVEY FOR HAROLD SPIKER

AUDITORS PARCEL NUMBER
66-10-04-15-000 (ALL)

BEING ALL OF THE PARCEL CONVEYED TO HAROLD J. SPIKER AND LINDA C. HELZER IN O.R. VOLUME 2550, PAGE 530 (LIFE ESTATE AFFIDAVIT O.R. VOLUME 2873, PAGE 721) OF THE MUSKINGUM COUNTY OFFICIAL RECORDS, SITUATED IN THE SOUTHWEST QUARTER OF SECTION 4, TOWNSHIP 1, RANGE 5, OF THE UNITED STATES MILITARY LANDS, UNION TOWNSHIP, MUSKINGUM COUNTY, OHIO.

BEARINGS ARE BASED ON OHIO STATE PLANE COORDINATE SYSTEM 1983(2011), OHIO SOUTH ZONE, GRID, DERIVED FROM A GPS OBSERVATION.



1	S41°01'26"E	208.21'
2	S36°51'13"E	161.12'
3	S33°13'29"E	111.39'
4	S29°15'38"E	87.38'
5	S26°14'25"E	118.39'
6	S26°14'25"E	40.00'
7	S30°54'53"E	142.93'
8	S36°54'53"E	192.58'
9	S32°26'04"E	48.61'
10	S21°50'04"E	75.64'
11	S08°51'52"E	51.70'
12	S02°14'36"W	59.65'

RESEARCH

DEEDS AS SHOWN
PREVIOUS SURVEY OF A 1.000± AC. PARCEL COMPLETED JUNE 8, 1979 BY W.J. BIEDENBACH PS5718
PREVIOUS SURVEY OF A 40.07 AC. PARCEL COMPLETED OCT. 1, 2013 BY L.P. DINAN PS5451
PREVIOUS SURVEY OF A 2.272± AC. PARCEL COMPLETED JULY 18, 1985 BY W.J. BIEDENBACH PS5718
PREVIOUS SURVEY OF 12 PARCELS FOR BRUNER LAND COMPANY COMPLETED JUNE 2, 1992 BY R.W. CLAUS PS6456
PREVIOUS SURVEY OF A 10.24 AC. PARCEL COMPLETED JUNE 21, 1991 BY L.P. DINAN PS5451
PREVIOUS SURVEY OF A 1.79 AC. PARCEL COMPLETED DEC. 10, 1980 BY L.P. DINAN PS5451
PREVIOUS SURVEY OF A 1.0947 AC. PARCEL COMPLETED MARCH 1998 BY R.M. ROBERTS PS5803
PREVIOUS SURVEY OF A 1.6347 AC. PARCEL COMPLETED MARCH 1998 BY R.M. ROBERTS PS5803
PREVIOUS SURVEY OF A 1.8987 AC. PARCEL COMPLETED MARCH 1998 BY R.M. ROBERTS PS5803
PREVIOUS SURVEY OF A 4.232 AC. PARCEL COMPLETED NOV. 5, 2012 BY B.K. McPEEK PS8517

LEGEND

- EXISTING IRON PIN
- ANGLE POINTS
- ▲ STONE FOUND

DESCRIPTION

APPROVED

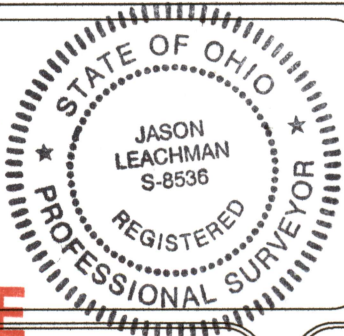
By: *[Signature]*

SCALE 1"=200'



I, JASON LEACHMAN, HEREBY CERTIFY TO THE BEST OF MY KNOWLEDGE AND BELIEF THE ABOVE PLAT AND SURVEY TO BE CORRECT AS PREPARED BY ME, THIS 24th DAY OF OCTOBER, 2019, FROM A FIELD SURVEY COMPLETED THE 21st DAY OF OCTOBER, 2019.

JASON LEACHMAN
PROFESSIONAL SURVEYOR #8536



THIS PROPERTY IS SUBJECT TO ALL APPLICABLE EASEMENTS, RIGHT OF WAYS, OR RESTRICTIONS, WHETHER RECORDED OR IMPLIED. THIS PLAT, PREPARED IN ACCORDANCE WITH CHAPTER 4733-37 OF THE ADMINISTRATIVE CODE, IS INTENDED FOR THE LEGAL TRANSFER OF THE PROPERTY SHOWN AND DOES NOT INTEND TO SHOW ANY OR ALL OF THE EASEMENTS, RIGHT OF WAYS, RESTRICTIONS OR ENCROACHMENTS UNLESS OTHERWISE INDICATED.

OFFICE COPY
NOT RECORDABLE

BASELINE SURVEYING, INC.

3010 EAST PIKE, ZANESVILLE, OHIO 43701
phone: 740-453-4850, email: BEI@rohio.com, www.BaselineSurveyingInc.com

DRAWN BY: JWJ	DATE: 10-24-19	SCALE: 1"=200'
CHECKED BY: MDN	JOB NO: 6250	DRAWING NO: Z:\6250\6250.dwg