

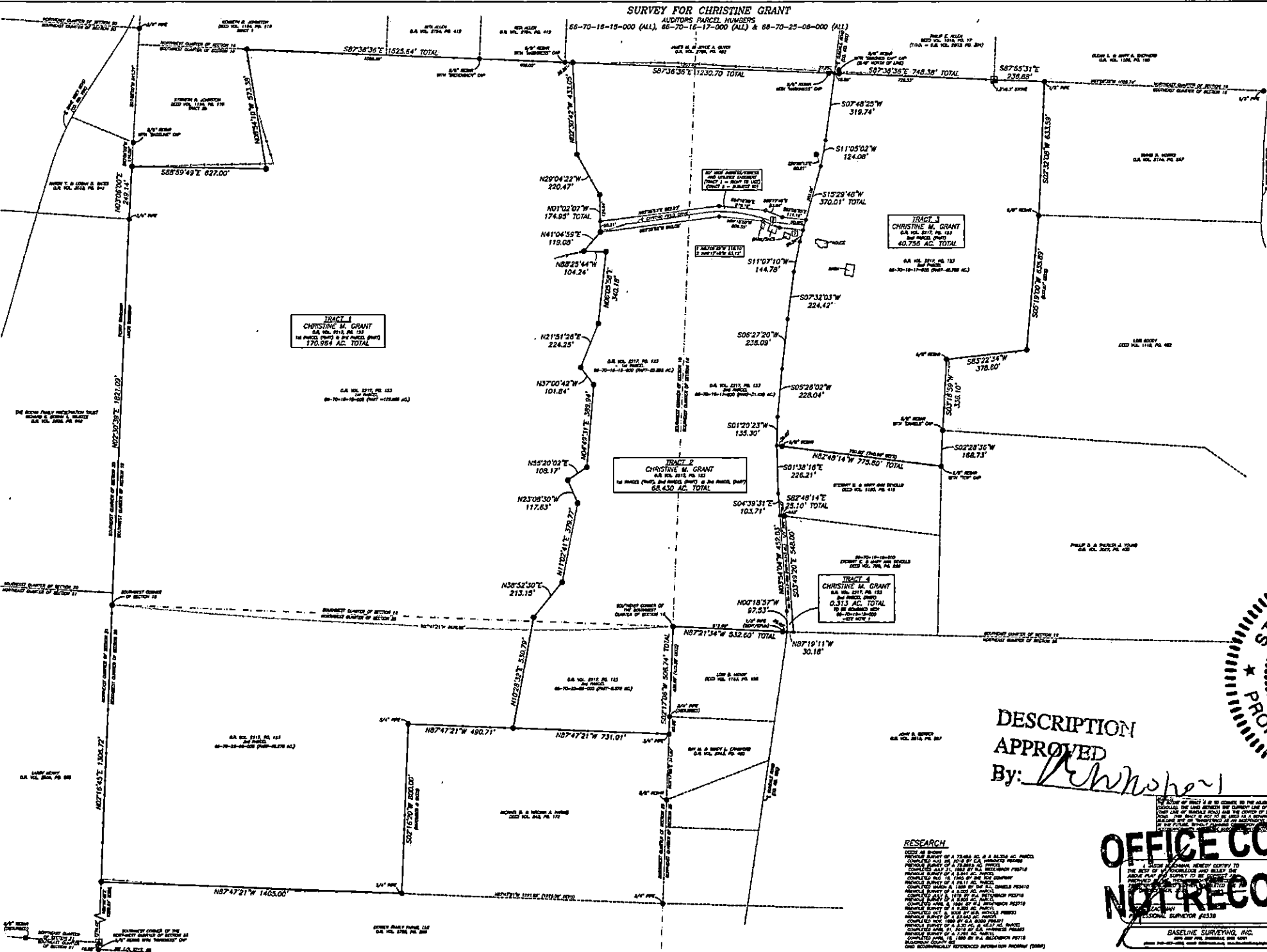
SURVEY FOR CHRISTINE GRANT

ADJUDICATED PARCEL NUMBERS

BEING THE PARCELS OF LAND CONVEYED TO CHRISTINE M. GRANT IN O.R. VOLUME 2317, PAGE 153 OF THE MADISON COUNTY OFFICIAL RECORDS, SITUATED IN THE SOUTHWEST AND SOUTHEAST QUARTERS OF SECTION 18 AND IN THE NORTHWEST QUARTER OF SECTION 24, TOWNSHIP 1, RANGE 5, OF THE UNITED STATES MILITARY LANDS, UNION TOWNSHIP, MADISON COUNTY, OHIO.

BOUNDARIES ARE BASED ON OHIO STATE PLANE COORDINATE SYSTEM (FRS2011), OHIO SOUTH ZONE, GRID, DERIVED FROM A GPS OBSERVATION.

SCALE 1"=200'



TRACT 1
CHRISTINE M. GRANT
O.R. VOL. 2317, PG. 153
16 PARCELS (PARTS OF 24 PARCELS) (PARTS)
170.954 AC. TOTAL

TRACT 2
CHRISTINE M. GRANT
O.R. VOL. 2317, PG. 153
16 PARCELS (PARTS OF 24 PARCELS) (PARTS)
66.430 AC. TOTAL

TRACT 3
CHRISTINE M. GRANT
O.R. VOL. 2317, PG. 153
16 PARCELS (PARTS OF 24 PARCELS) (PARTS)
40.756 AC. TOTAL

TRACT 4
CHRISTINE M. GRANT
O.R. VOL. 2317, PG. 153
16 PARCELS (PARTS OF 24 PARCELS) (PARTS)
0.313 AC. TOTAL



DESCRIPTION APPROVED

By: *[Signature]*

OFFICE COPY NOT RECORDABLE

RESEARCH
SEARCHED BY [Name]
INDEXED BY [Name]
SERIALIZED BY [Name]
FILED BY [Name]
MAY 15 2018
MADISON COUNTY, OHIO