

## SITUATED IN

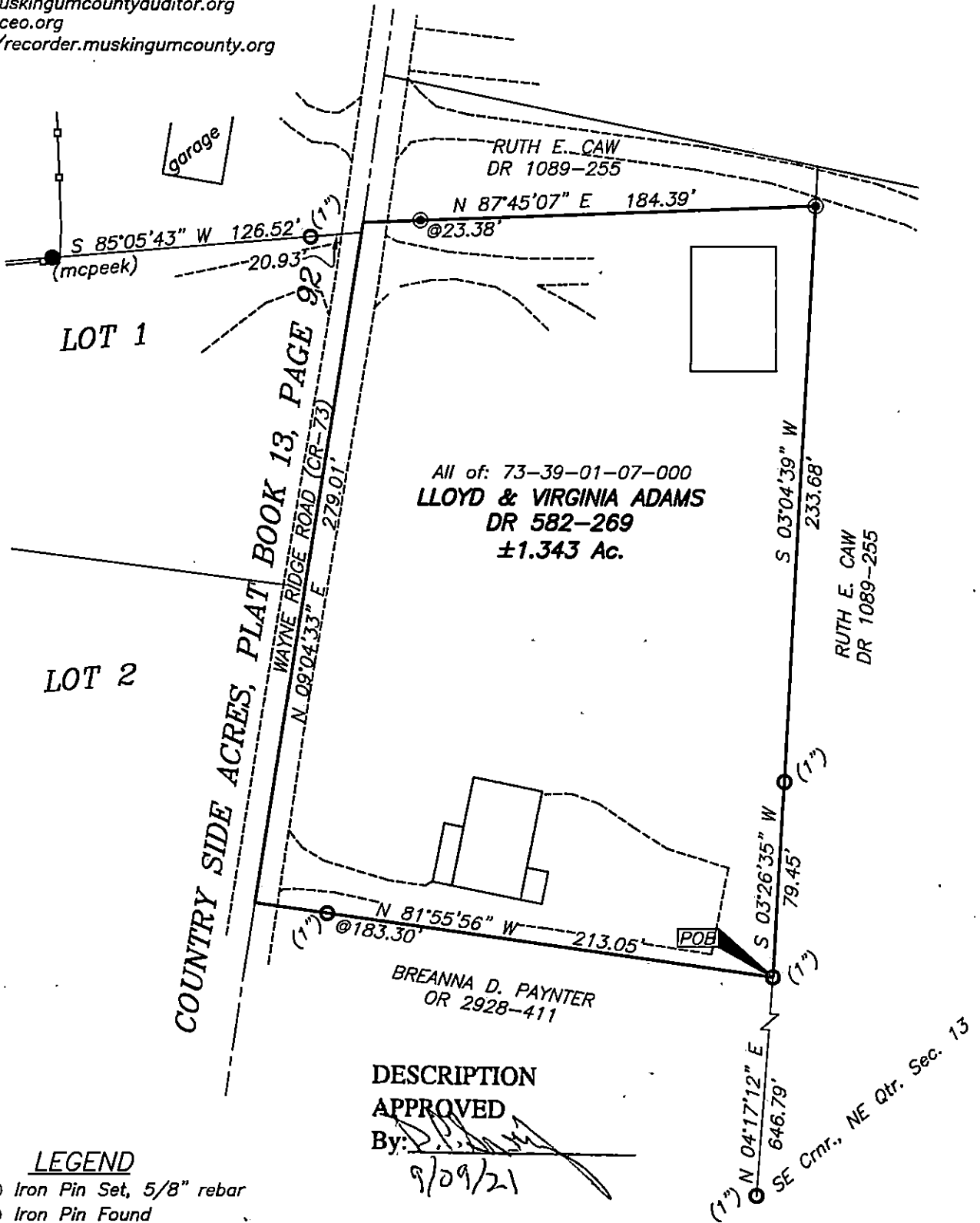
The State of Ohio, County of Muskingum, Township of Wayne,  
being part of the NE Qtr., Sec. 13, T12, R13.

## BASIS OF BEARING

Bearings & distances are based on State Plane Grid Coordinates,  
NAD83, Ohio South, per GPS Observation.

## REFERENCES

\* As Noted on Plat  
[www.muskingumcountyauditor.org](http://www.muskingumcountyauditor.org)  
[www.mceo.org](http://www.mceo.org)  
<http://recorder.muskingumcounty.org>



Brian Kelly McPeck  
Reg. Surveyor No. 8517

9/17/21  
Date

This plat was prepared by McPeck Land Surveying, LLC  
in accordance with Chapter 4733-37 of the Administrative Code,  
and is intended to be used for the legal transfer of the property  
described and does not intend to describe all or any easements of  
record, nor encroachments unless otherwise intended.

**MCPECK  
LAND  
SURVEYING**

[www.mcpecklandsurveying.com](http://www.mcpecklandsurveying.com)  
email: [brian@mcpecklandsurveying.com](mailto:brian@mcpecklandsurveying.com)  
340 Robin Hood Ln., Zanesville, Oh 43701 • 740.704.6073