

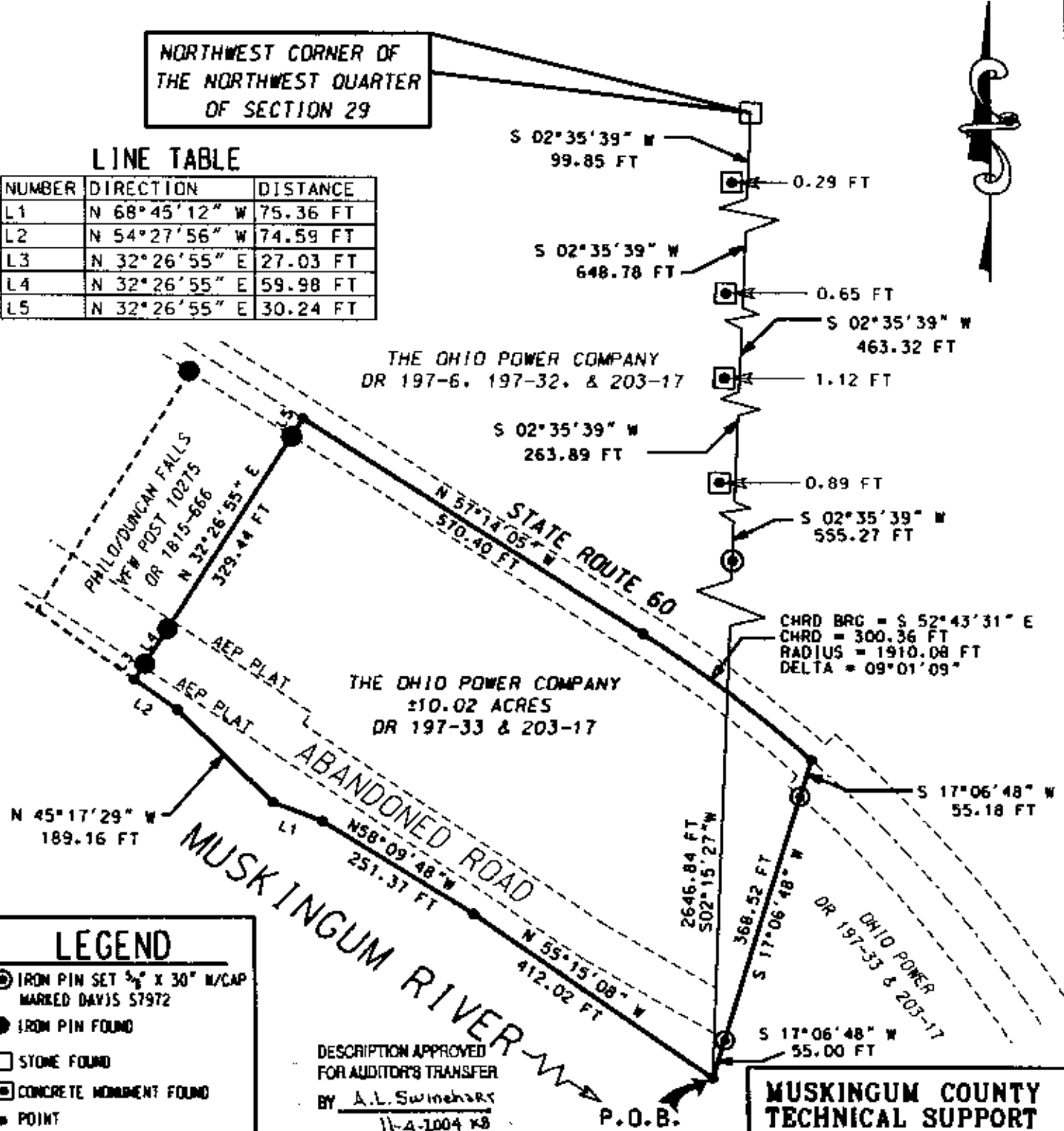
PLAT OF SURVEY FOR THE OHIO POWER COMPANY

STATE OF OHIO, MUSKINGUM COUNTY, WAYNE TOWNSHIP,
PART OF THE EAST HALF OF SECTION 30 AND PART OF THE
WEST HALF OF SECTION 29, TOWNSHIP 13 NORTH, RANGE 12 WEST

NORTHWEST CORNER OF
THE NORTHWEST QUARTER
OF SECTION 29

LINE TABLE

NUMBER	DIRECTION	DISTANCE
L1	N 68°45'12" W	75.36 FT
L2	N 54°27'56" W	74.59 FT
L3	N 32°26'55" E	27.03 FT
L4	N 32°26'55" E	59.98 FT
L5	N 32°26'55" E	30.24 FT



LEGEND

- ⊙ IRON PIN SET 3/8" X 30" W/CAP MARKED DAVIS 57972
- IRON PIN FOUND
- STONE FOUND
- ▣ CONCRETE MONUMENT FOUND
- POINT

DESCRIPTION APPROVED
FOR AUDITOR'S TRANSFER
BY A.L. Swineharts
11-A-1004 KB

MUSKINGUM COUNTY TECHNICAL SUPPORT

401 MAIN STREET
ZANESVILLE, OHIO 43701
(740) 588-4357

I HEREBY CERTIFY THIS PLAT
TO BE CORRECT AS SURVEYED
JANUARY 2004

**OFFICE COPY
NOT RECORDABLE**

DOUGLAS R. DAVIS
PSL# 7972
DATE

PART OF PARCEL NO.:	73-73-93-29-03-000	+ 0.79 ACRES
PART OF PARCEL NO.:	73-73-90-01-01-000	± 9.23 ACRES
STATE ROUTE 60 RIGHT-OF-WAY		± 0.60 ACRES
TOTAL		± 9.42 ACRES

- PERTINENT DOCUMENTS AND SURVEYS USED:**
- DEED REFERENCES SHOWN
 - TAX MAPS
 - SURVEY RECORDS FOUND IN THE MUSKINGUM COUNTY ENGINEERS OFFICE, ZANESVILLE, OHIO

BASIS OF BEARING:
BEARINGS ARE BASED ON NAD 83, OHIO SOUTH ZONE,
STATE PLANE COORDINATES AS PER GPS OBSERVATIONS
FROM NATIONAL GEODETIC SURVEY GPS MONUMENT- PHILO (JX2267).

