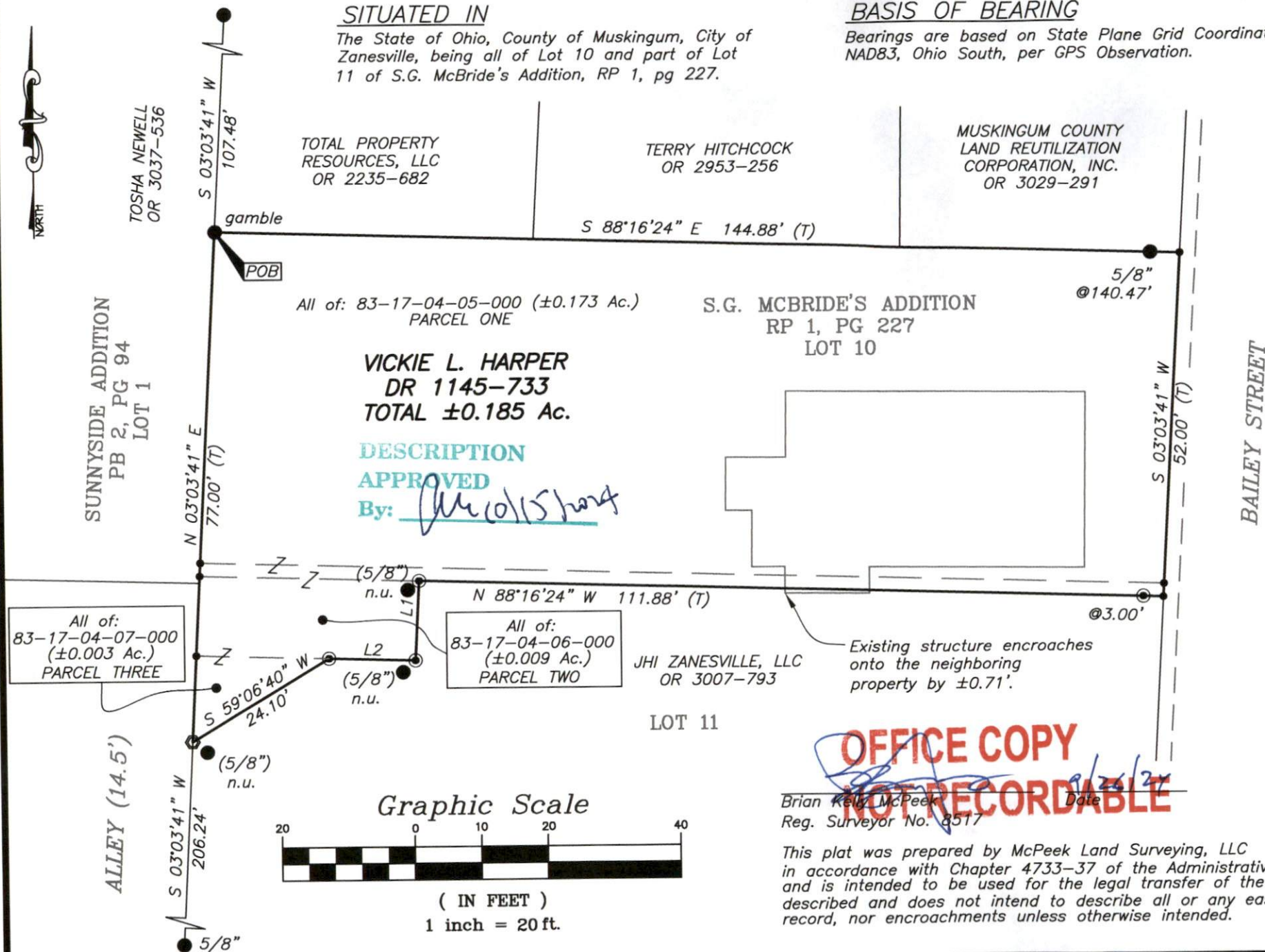


ReSurvey

The State of Ohio, County of Muskingum, City of Zanesville, being all of Lot 10 and part of Lot 11 of S.G. McBride's Addition, RP 1, pg 227.

*Bearings are based on State Plane Grid Coordinates,
NAD83, Ohio South, per GPS Observation.*



LINE	BEARING	DISTANCE
L1	S 03°03'41" W	12.00'
L2	N 88°16'24" W	13.00'

- Iron Pin Set (5/8" MCPEEK PS 8517)
- Iron Pin Found
- Gin Pin Set
- Unmarked Point



* As Noted on Plat
www.muskingumcountyauditor.org
www.mceo.org
http://recorder.muskingumcounty.org
Previous surveys by: Gamble, November 14, 1996
Dinan, January 8, 2020



www.mcpeeklandsurveying.com
email: brian@mcpeeklandsurveying.com
1705 East Pike * Zanesville, Oh 43701 * 740.704.6073