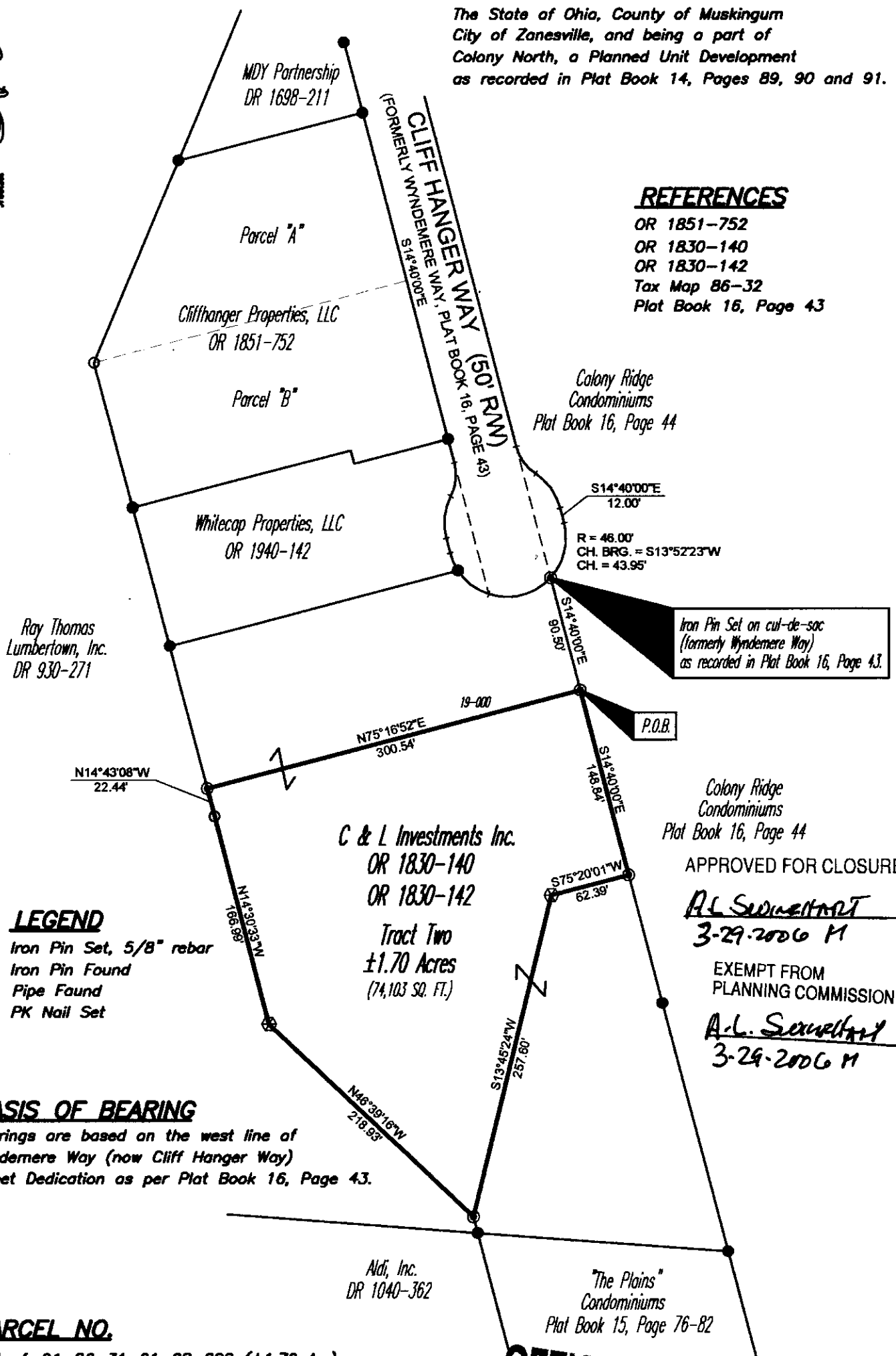


## SITUATED IN

The State of Ohio, County of Muskingum  
City of Zanesville, and being a part of  
Colony North, a Planned Unit Development  
as recorded in Plat Book 14, Pages 89, 90 and 91.

## REFERENCES

OR 1851-752  
OR 1830-140  
OR 1830-142  
Tax Map 86-32  
Plat Book 16, Page 43



## LEGEND

- Iron Pin Set, 5/8" rebar
- Iron Pin Found
- Pipe Found
- ⊗ PK Nail Set

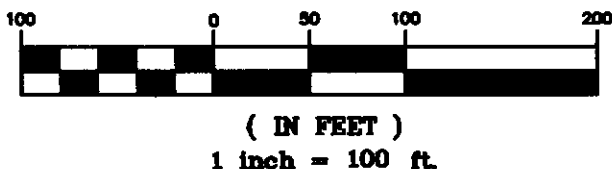
## BASIS OF BEARING

Bearings are based on the west line of  
Wyndemere Way (now Cliff Hanger Way)  
Street Dedication as per Plat Book 16, Page 43.

## PARCEL NO.

Part of: 91-86-31-01-08-000 (±1.70 Ac.)

## GRAPHIC SCALE



**OFFICE COPY  
NOT RECORDABLE**

Timothy H. Linn  
Reg. Surveyor No. 7113

Project No.: 86-32-NIST-TOWN



Linn Engineering, Inc.  
Civil Engineering Consultants  
P.O. Box 2088 Zanesville, Ohio 43702-2088

740-452-7434