

KEY MAP

OF

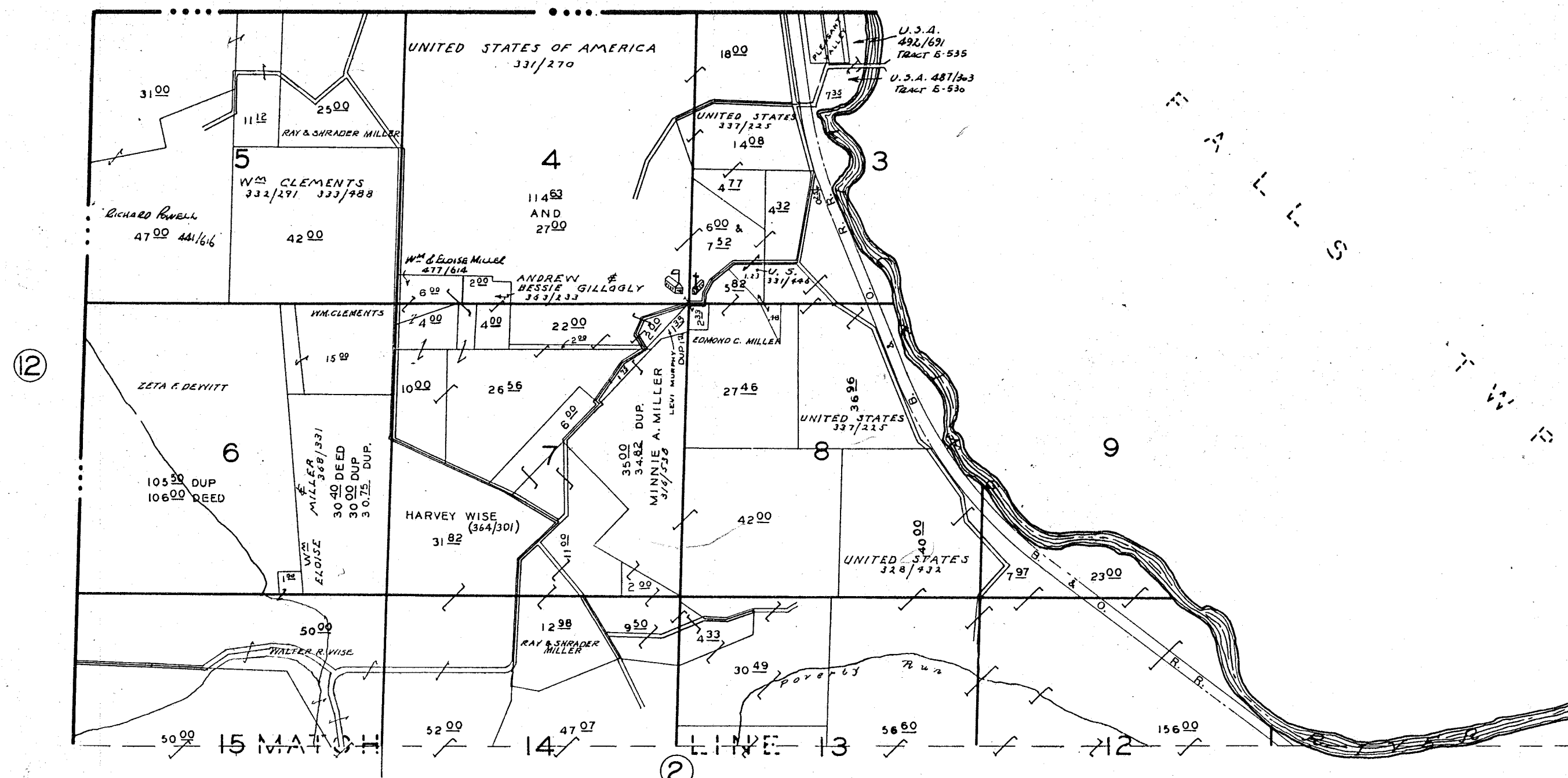
HOPEWELL TWP. MUSK. CO. O.

SCALE 2"=1 MILE

1950<sup>15</sup>

LICKING

TWP.



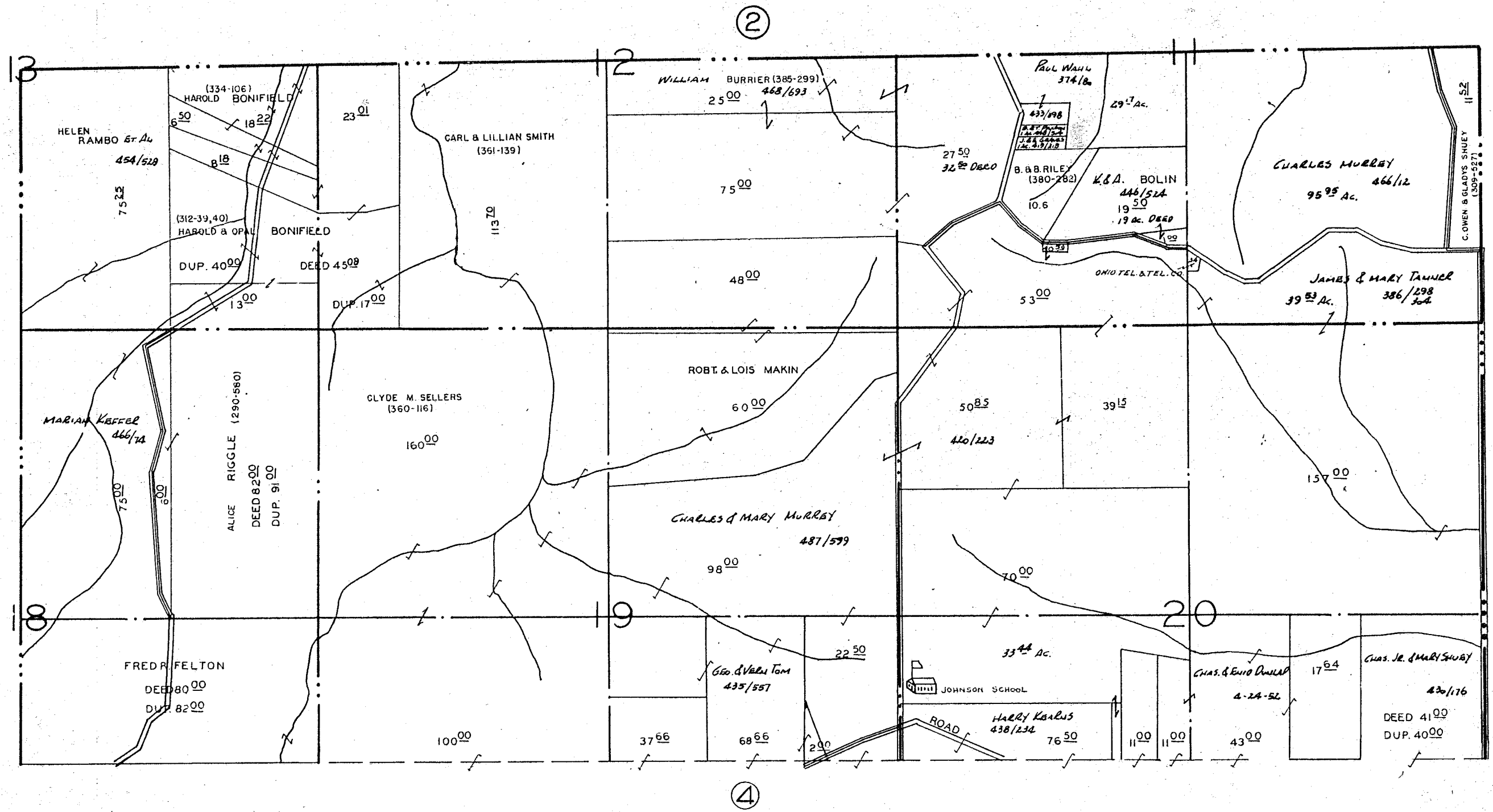
NORTH HALF OF QR. TWP. I; R. 9; TWP. I.

HOPEWELL TWP. MUSK. CO. O.

SCALE 1" = 500'

SHEET N<sup>o</sup> 1.





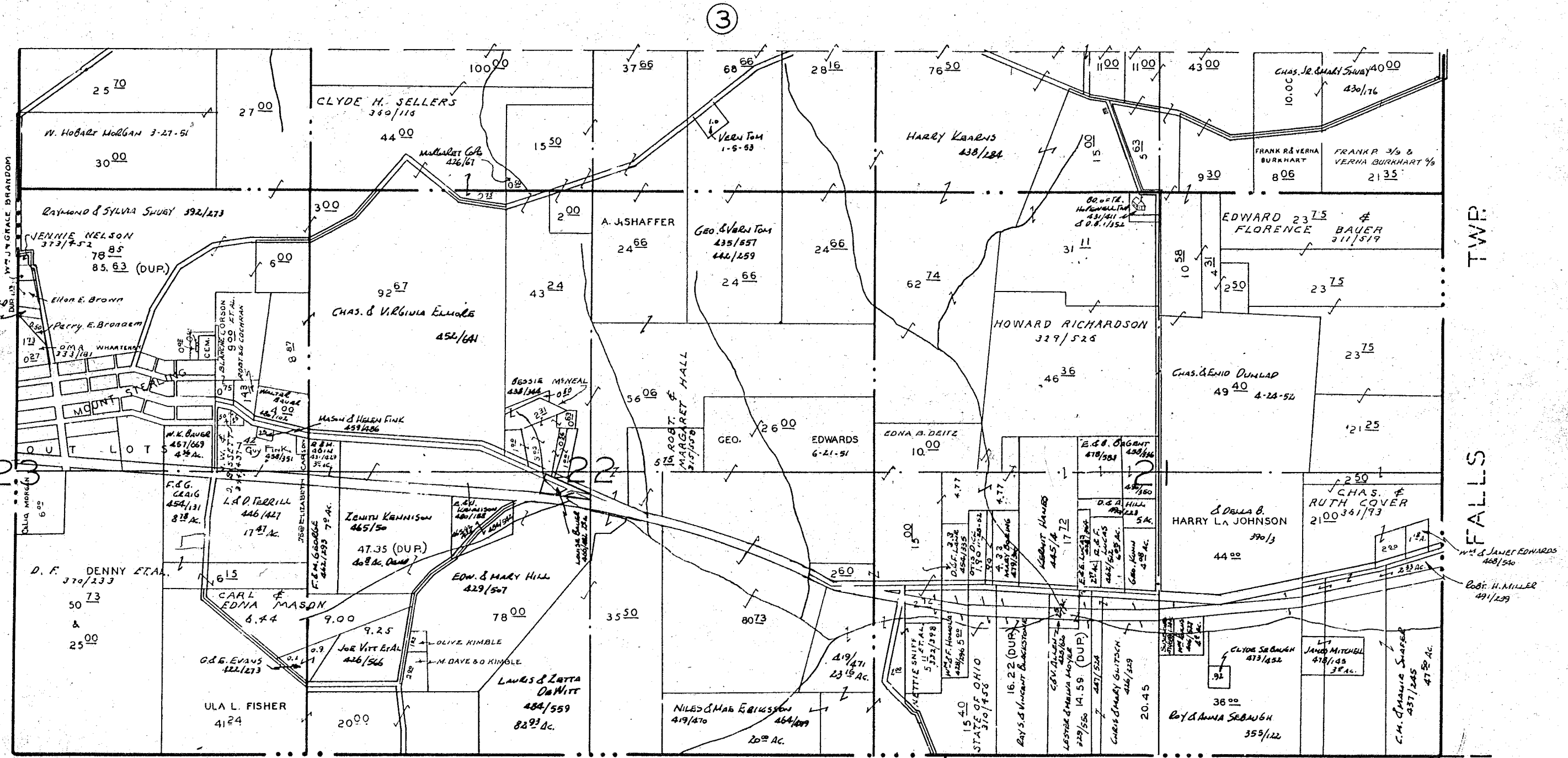
FALLS TWP.

NORTH HALF OF QR. TWP. 4: R. 9: TWP. 1.

HOPEWELL TWP. MUSK. CO. O.

SCALE 1" = 500'

SHEET N<sup>o</sup>. 3

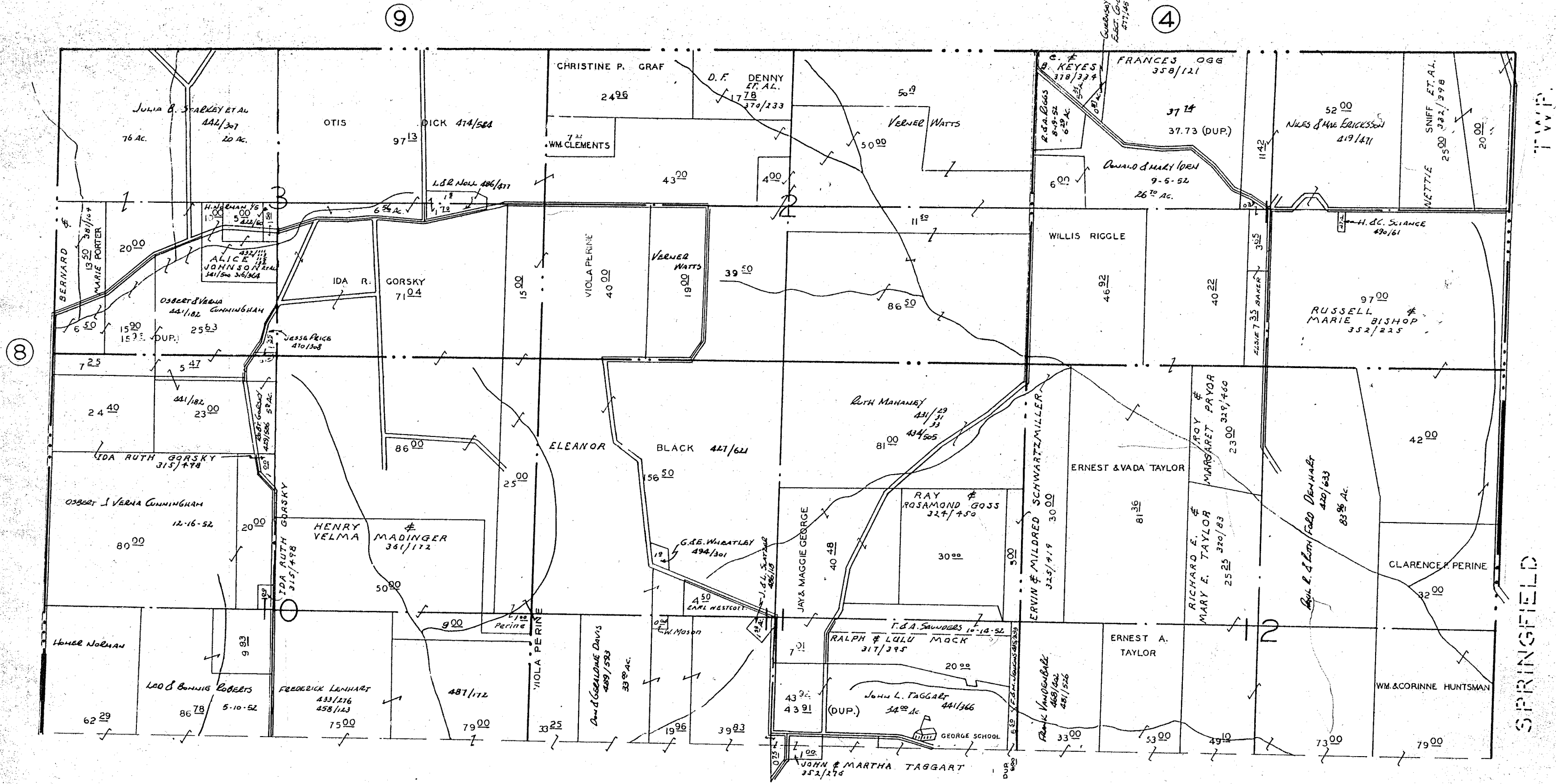


SOUTH HALF OF QR. TP. 4, R. 9, TWP. 1.

HOPEWELL TWP MUSK. CO. O.

SCALE 1"=500'

SHEET N<sup>o</sup> 4

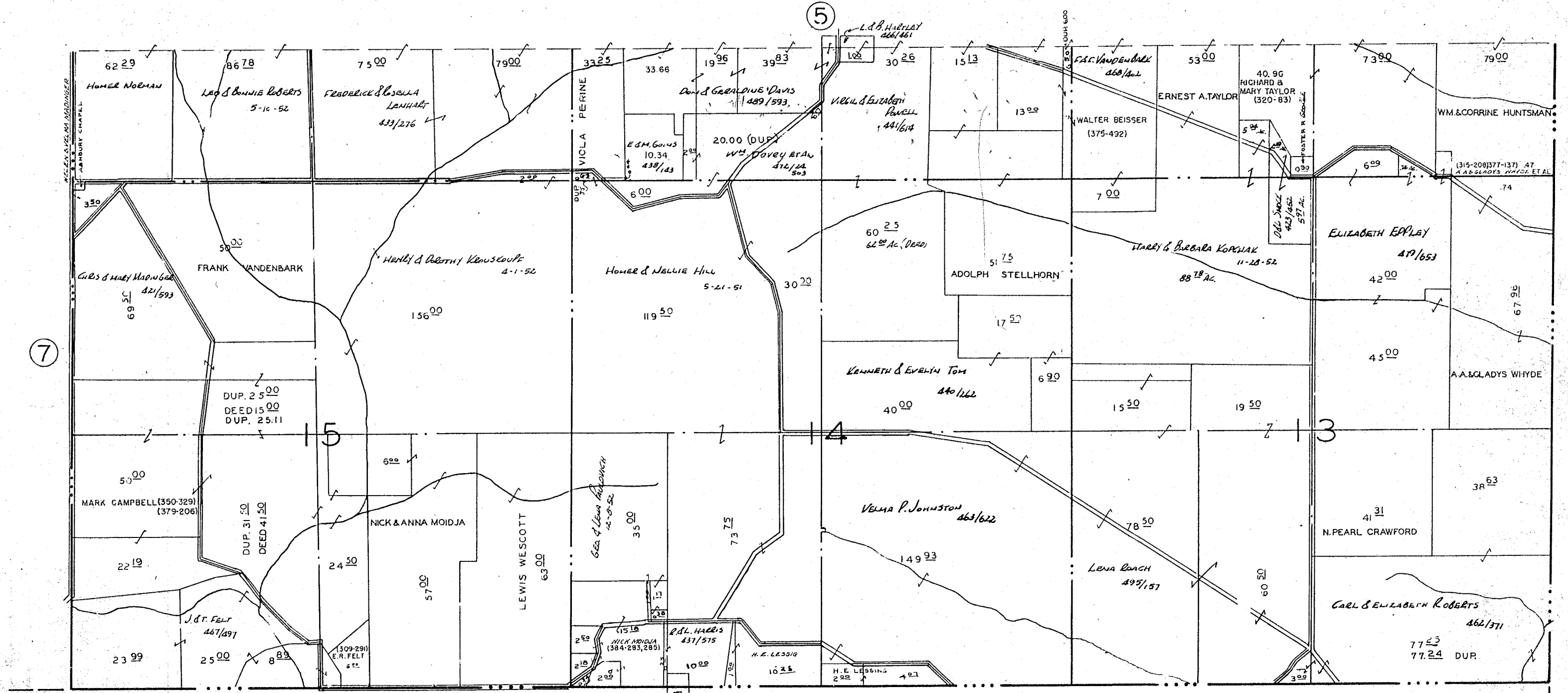


NORTH PART OF QR. TWP. 1: R. 15: TWP. 18.

HOPEWELL TWP. MUSK. CO. O.

SCALE 1" = 500'

SHEET N<sup>o</sup> 5



TWP.

SPRINGFIELD

PERRY

COUNTY

NEWTON

TWP.

SOUTH HALF of QR. TWP. 1: R. 15: TWP. 18.

HOPEWELL TWP.

MUSK. CO. O.

SCALE 1"=500'

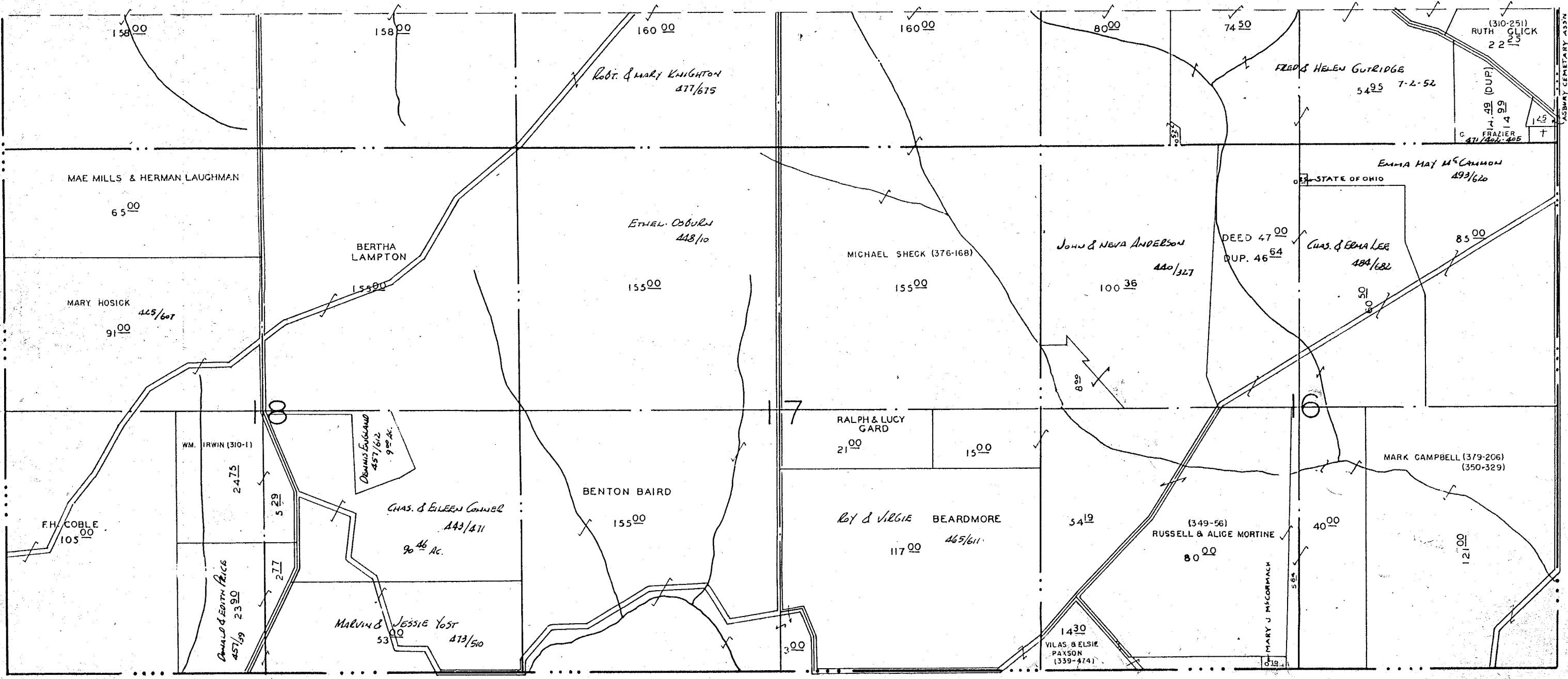
SHEET N<sup>o</sup>. 6

8

6

LICKING COUNTY

PERRY COUNTY



SOUTH HALF OF QR.TWP. 2; R.15, TWP. 18.

HOPEWELL TWP.

MUSK. CO. O.

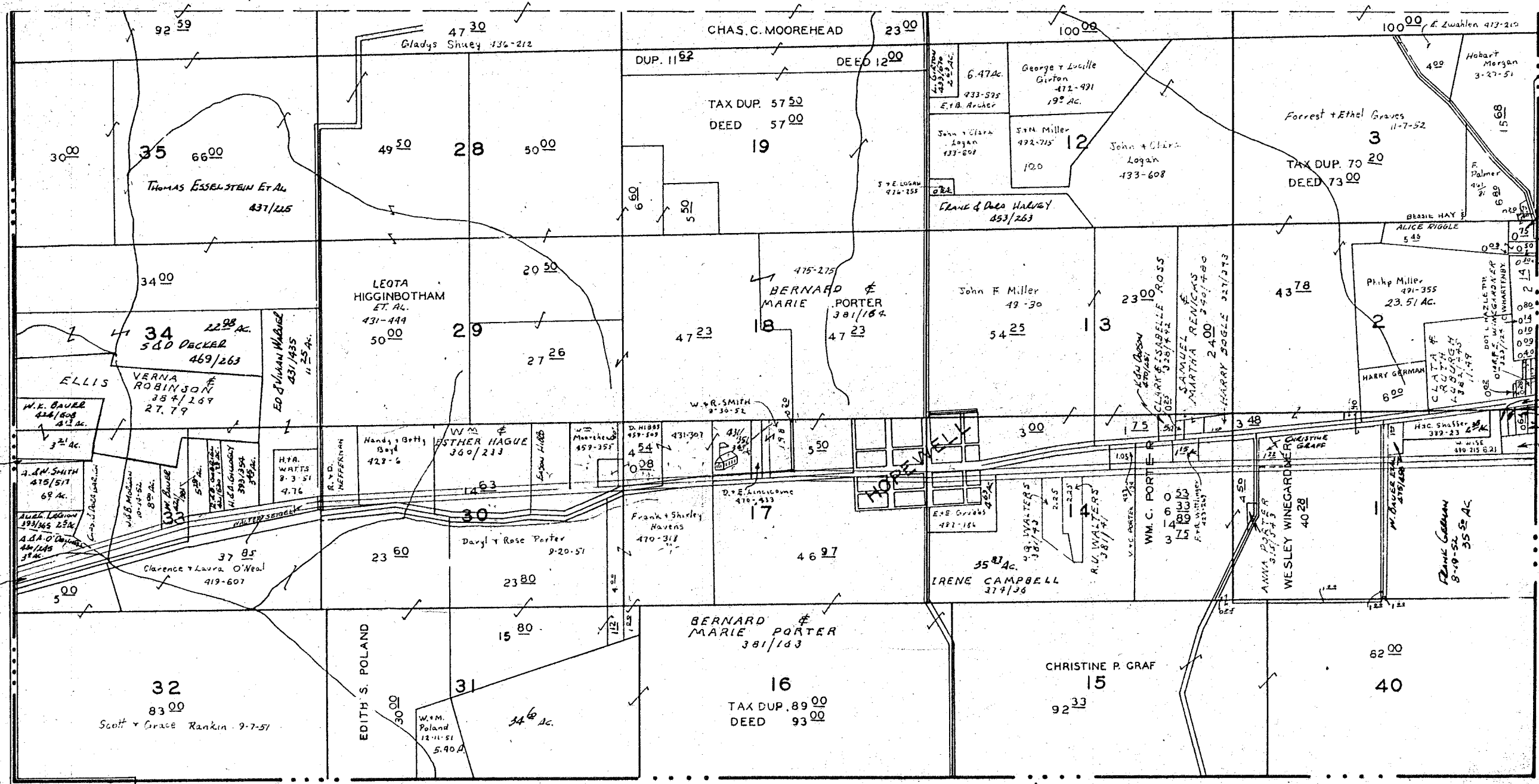
SCALE 1" = 500'

SHEET N° 7



COUNTY

LICKING



10

4

8

5

SOUTH HALF OF QR. TWP. 3; R. 9; TWP. I.

HOPEWELL TWP. MUSK. CO. O.

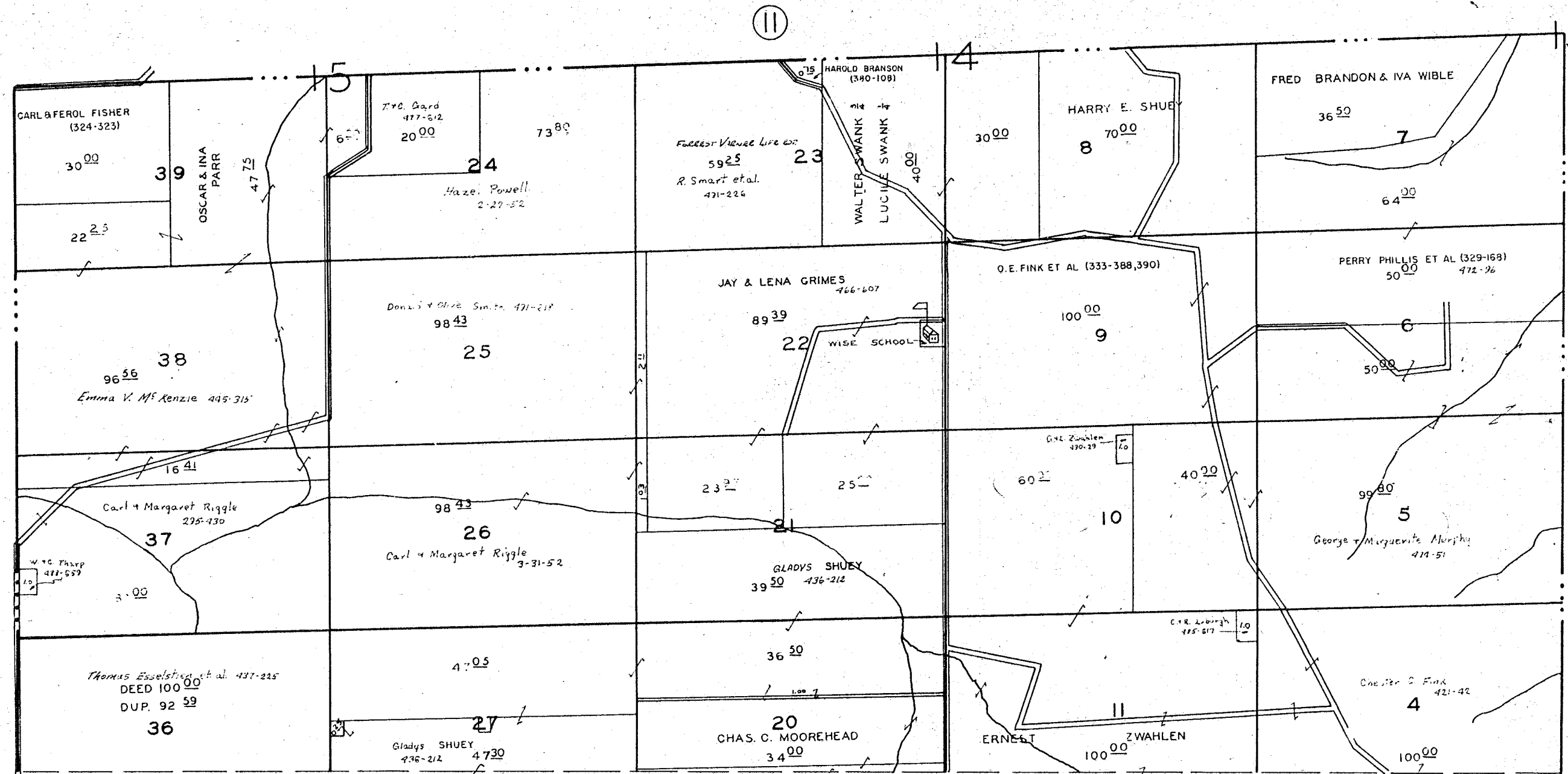
SCALE 1" = 500'

SHEET N° 9

H. S. HOLBERT 488/87  
 E. M. PASONATEL 374/286 36 Ac.  
 L. DICK 424/534  
 F. B. GRAVES 481/407  
 DALE M. WEGGARDER 465/615

LICKING COUNTY

LICKING COUNTY



NORTH HALF OF QR. TWP. 3: R. 9: TWP. 1.

HOPEWELL TWP.

MUSK. CO. O.

SCALE 1" = 500'

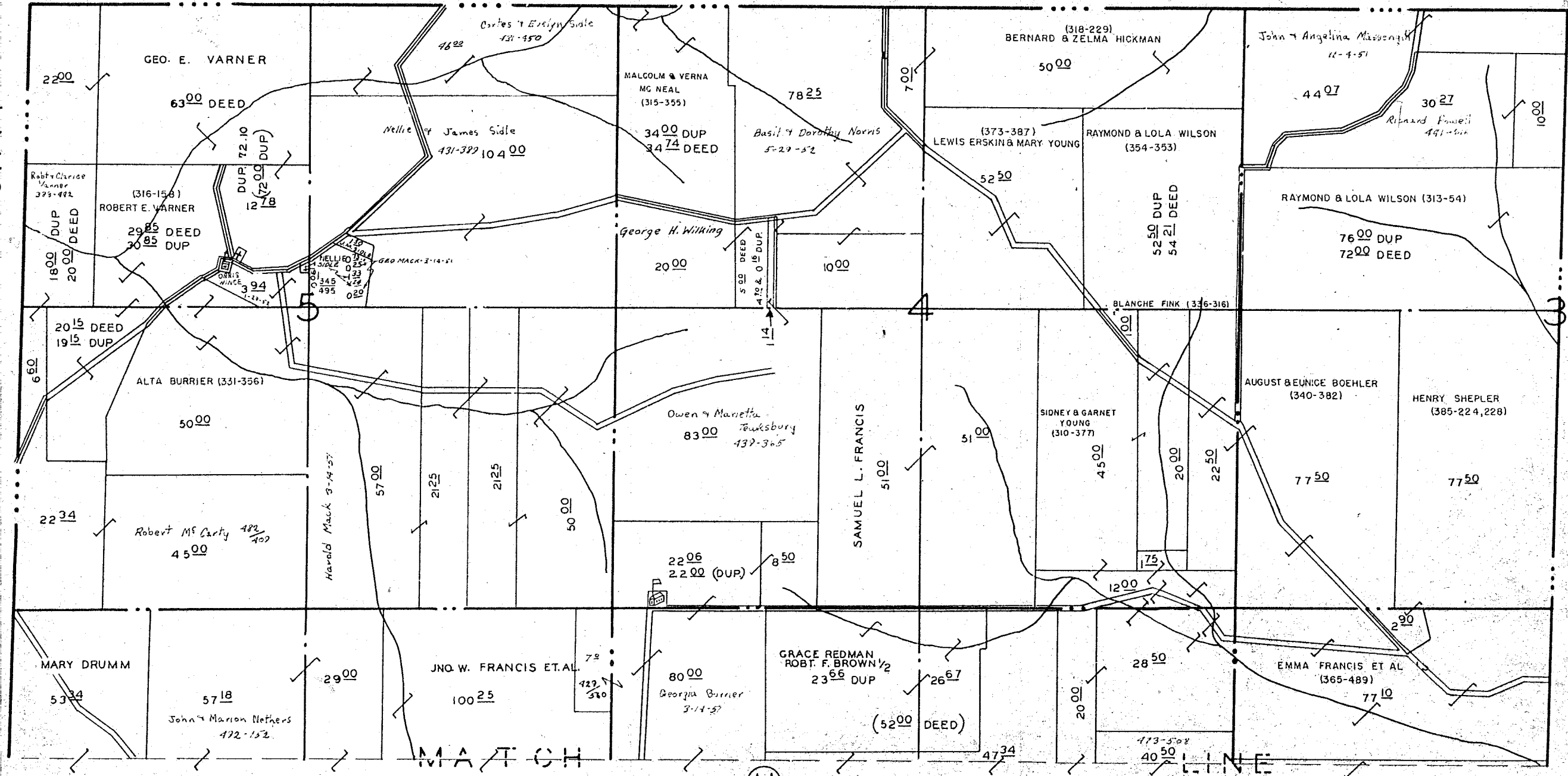
SHEET N<sup>o</sup> 10



L I C K I N G T W P

COUNTY

LICKING



NORTH HALF of QR. TWP.2;R.9;TWP. 2.

HOPEWELL TWP. MUSK. CO.O.

SCALE 1" = 500'



BOYD ST. CLAIR  
357/423

5.48 (DUP)  
536

O.L.N. 2

125

FINK  
3.22 (DUP)  
328

O.L.N. 1

W<sup>th</sup> E. FINK  
787



MOUNT STERLING  
HOPEWELL TWP. MUSK. COO.

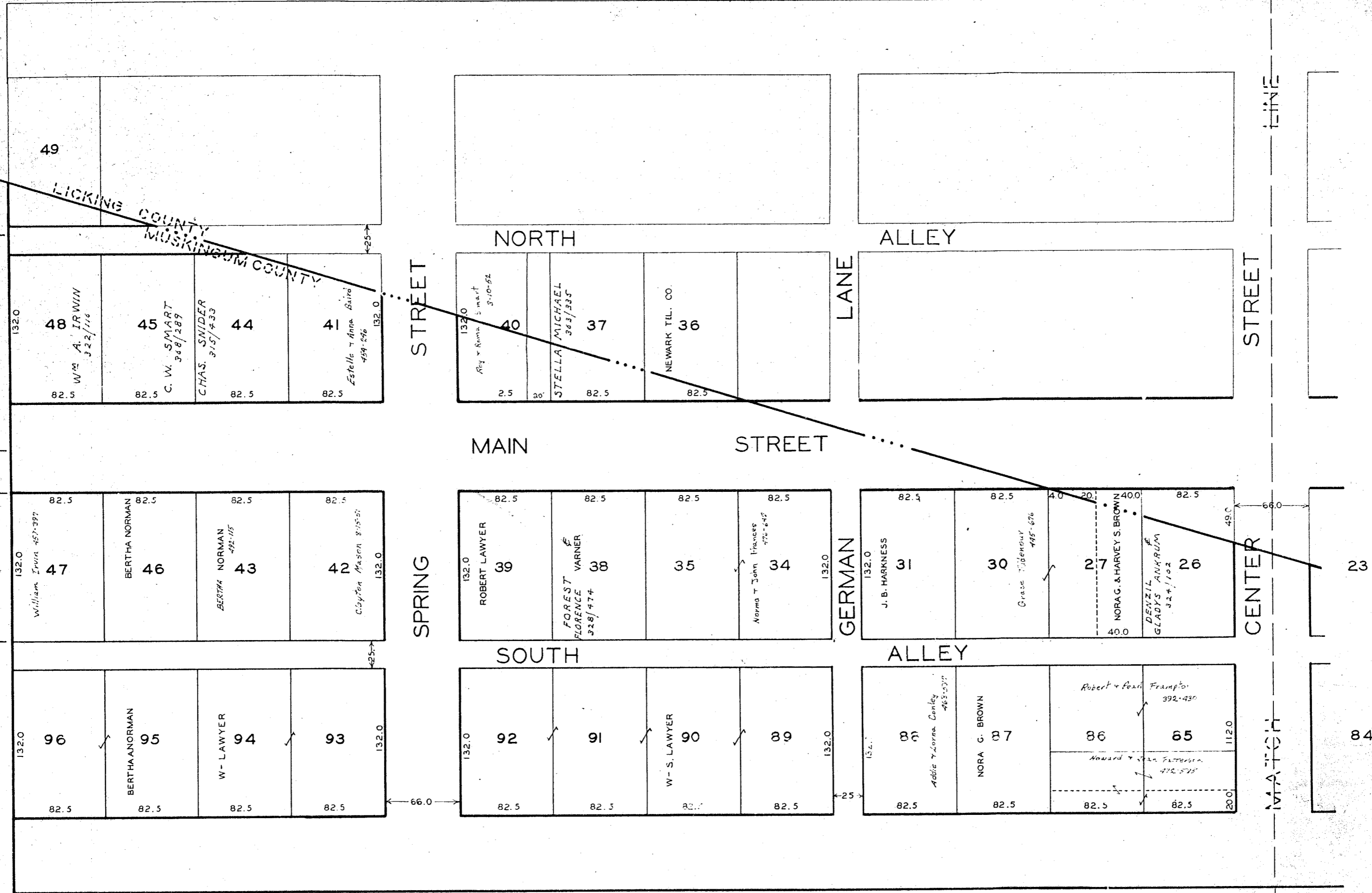
SCALE 1"=40'

SHEET N<sup>o</sup> 14

SCOTT R. NORMAN  
036

ALBERT R. KISSICK  
062

S.W. SPOHN  
Boiler  
050



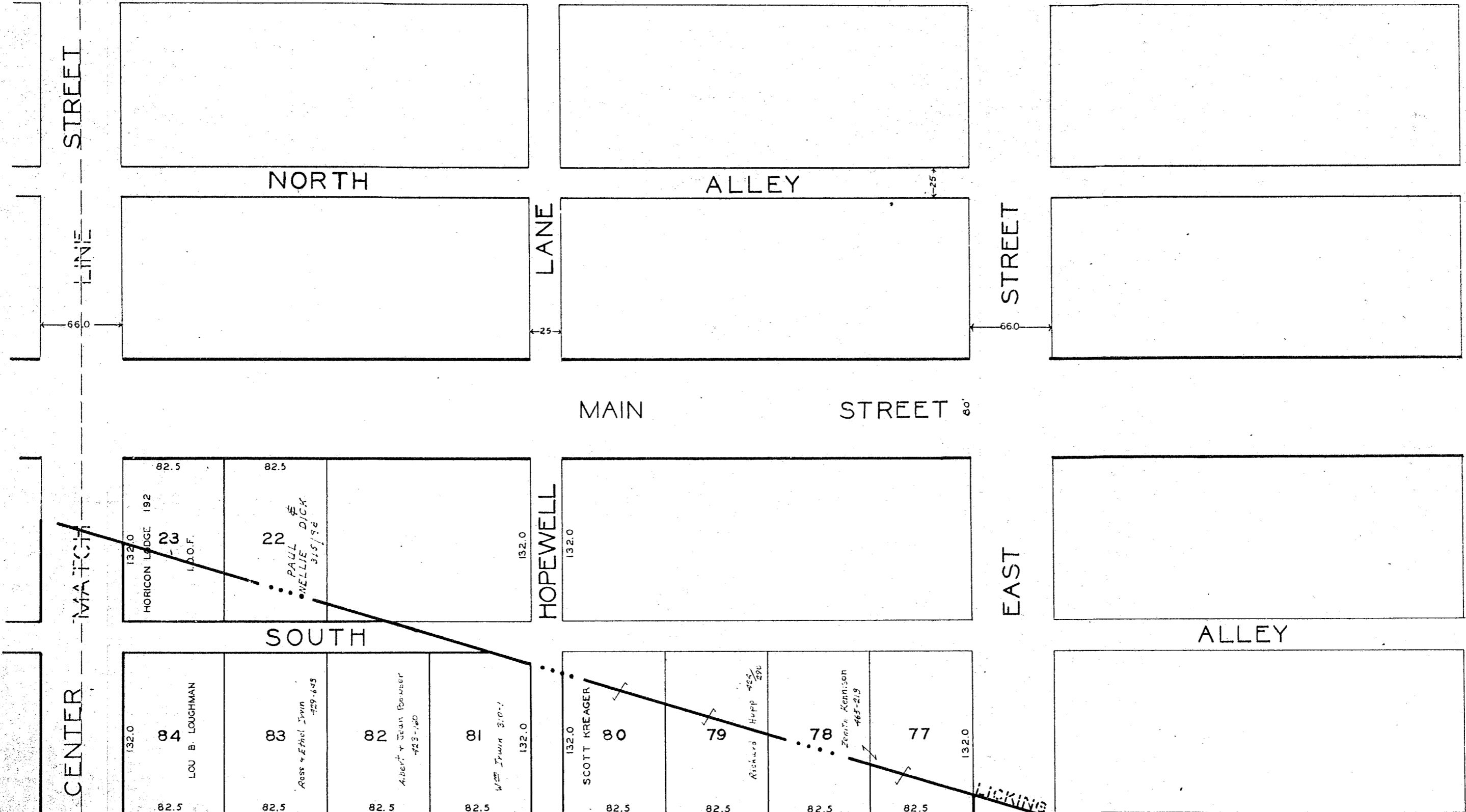
GRATIOT

HOPEWELL TWP.

MUSK.CO.O.

SCALE 1"=40'

SHEET N<sup>o</sup>. 15



STREET

LINE

66.0

NORTH

ALLEY

LANE

STREET

25

66.0

MAIN STREET 60'

MATCH

CENTER

SOUTH

HOPEWELL

EAST

ALLEY

82.5 82.5  
 132.0 192  
 HORIZON LODGE 23  
 L.O.F.  
 22  
 PAUL & MELLIE DICK  
 315/92

132.0 84  
 LOU B. LOUGHMAN  
 82.5  
 83  
 Ross & Ethel Irwin  
 429-643  
 82  
 Albert & Jean Bousler  
 423-140  
 81  
 Wm Irwin 310-1  
 132.0  
 82.5 82.5 82.5 82.5

132.0  
 HOPEWELL

132.0 80  
 SCOTT KREAGER  
 82.5  
 79  
 Richard Hupp 465-290  
 82.5  
 78  
 Zenia Kennison  
 465-213  
 82.5  
 77  
 132.0  
 82.5 82.5 82.5 82.5

100 CHURCH 185 A.R. IRWIN 300

LICKING COUNTY  
 MUSKINGUM COUNTY

GRATIOT

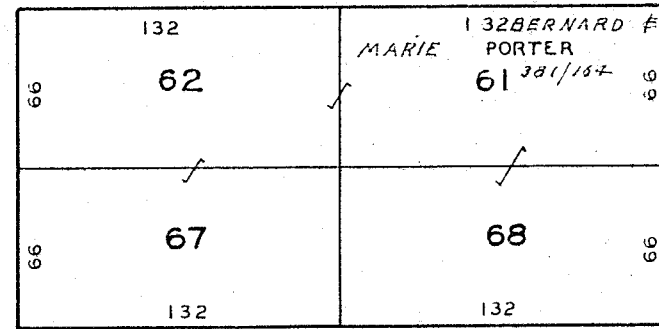
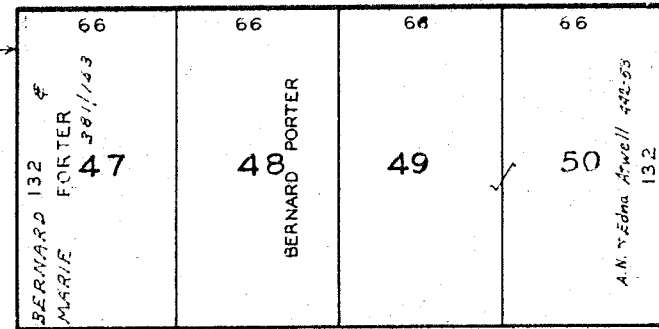
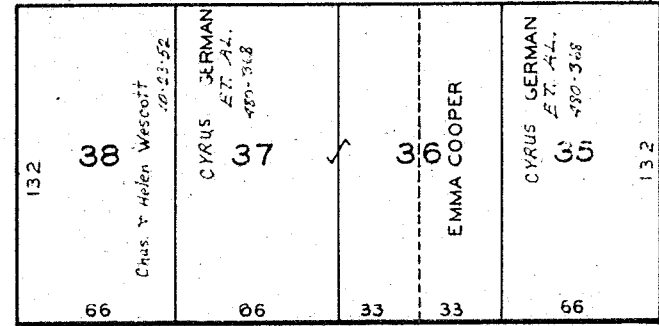
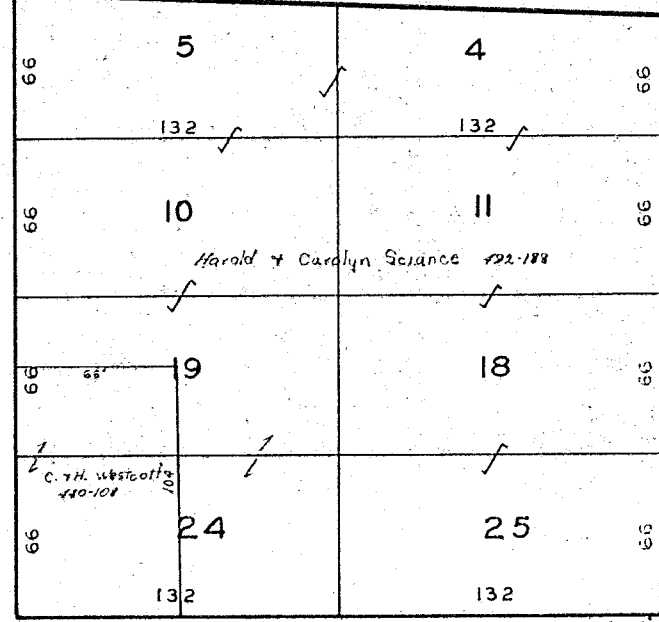
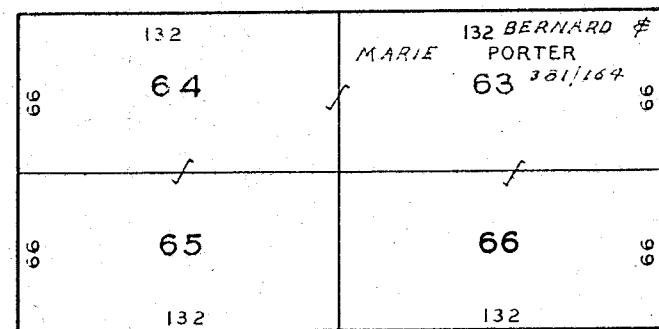
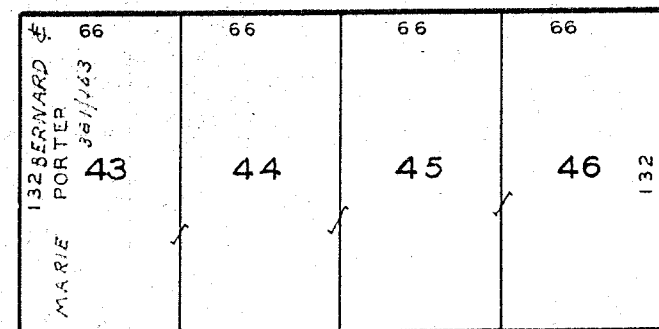
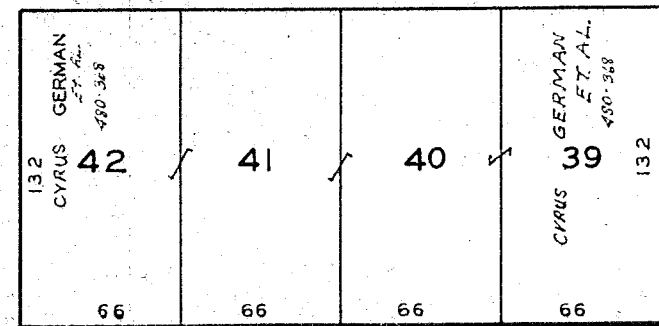
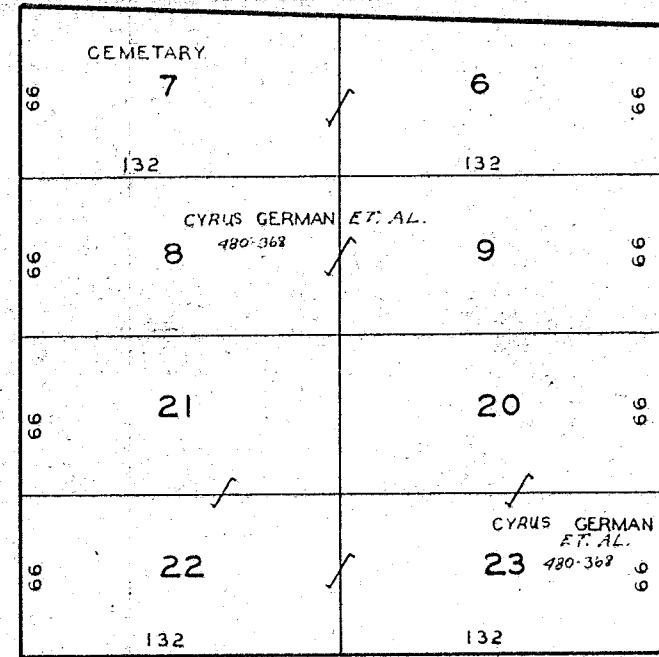
HOPEWELL TWP. MUSK. CO.O.

SCALE 1" = 40'

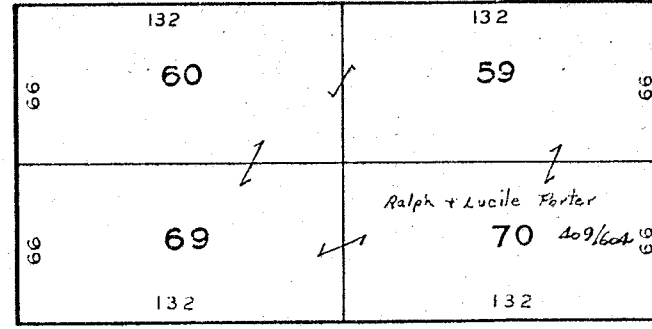
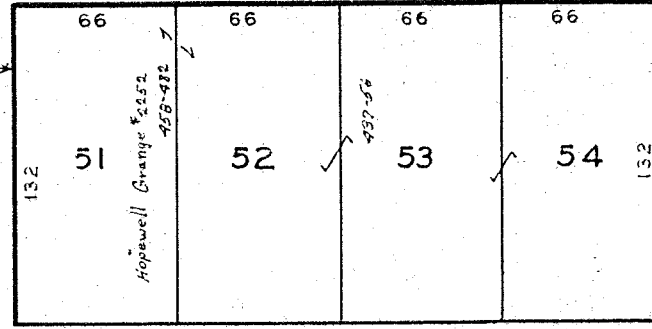
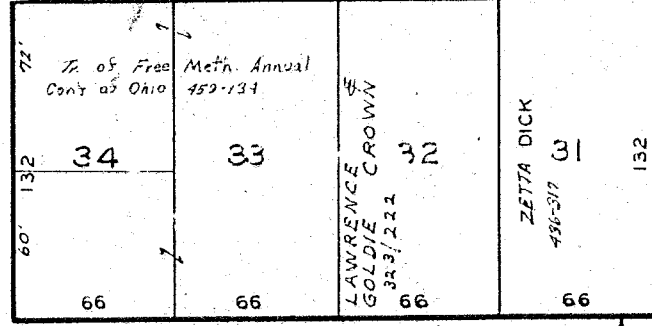
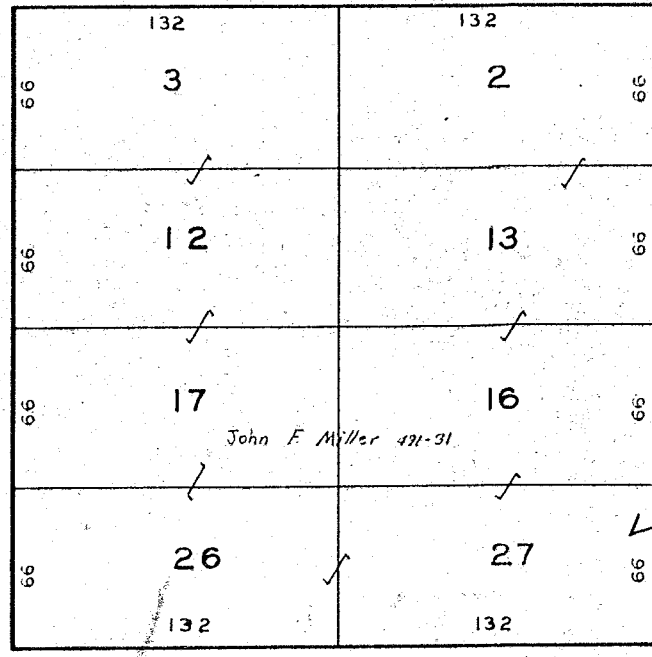
SHEET N<sup>o</sup> 16

GEO. L. PORTER  
5 50

GEO. L. PORTER  
4697



STREET



MAIN

STREET

CENTER

HARRY B. DICK  
54 25  
3 00

W. M. WALTERS ET AL.  
323/178  
45 00

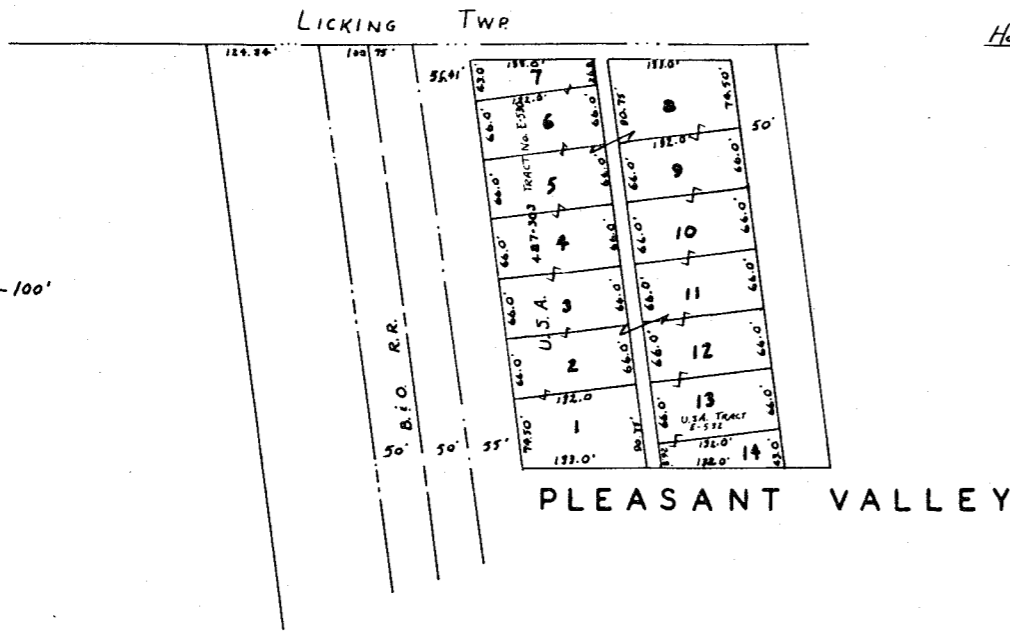
HOPEWELL

HOPEWELL TWP. MUSK. CO. O.

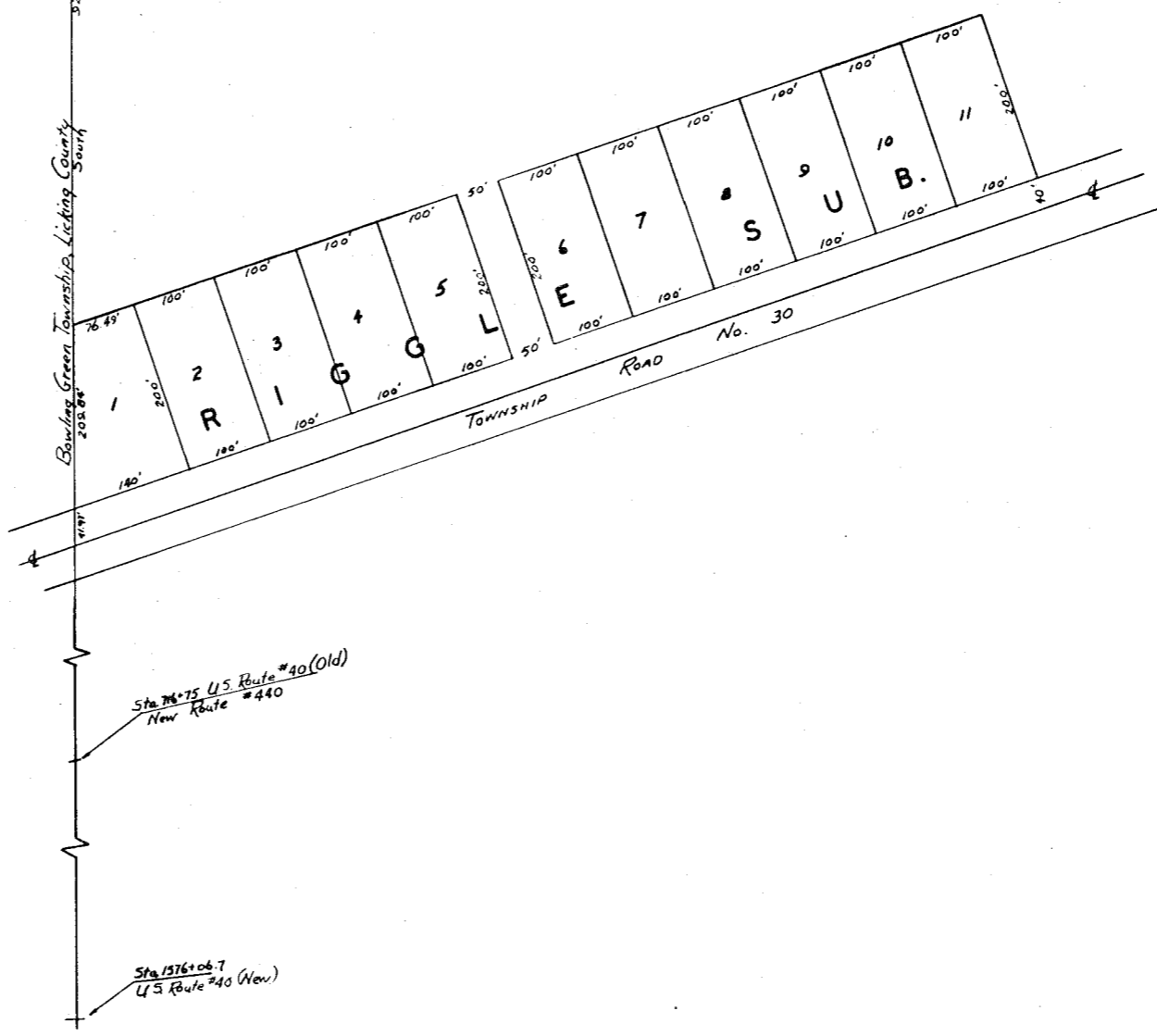
SCALE 1" = 40'

SHEET N<sup>o</sup> 17

N  
SCALE 1" = 100'



Hopewell Twp, Licking County  
NW Cor. Sec. 6  
Twp 10 R 15  
Muskingum County



Sta 76+75 U.S. Route #40 (Old)  
New Route #440

Sta 1976+06.7  
U.S. Route #40 (New)

RIGGLE SUBDIVISION  
PLEASANT VALLEY

HOPEWELL TWP.  
SHEET NO. 18