

CENTER OF OLD CHANNEL = CORP LINE
CASS TWP
JEFFERSON TWP

WAKATOMAKA
CREEK

LOUIS & FRANCIS HARPER 2.70
(372-220)

P.C. McGovern
.56 Ac.

McCormick
0.42 Ac.

DRESDEN REALTY INC.
390/94
0.43A

BRUNS COAL CO. 388/385
0.55Ac.

Wm. N. McBride

POND
PENN.

175 Ac.

R.O.A. 1966

DRESDEN
JEFFERSON TWP
MUSKINGUM CO
SCALE 40' = 1''

1950

2

1

12

1

2

1

M^s BRIDE
30 Ac

WM. M^s BRIDE
2.12 Ac
3.45 — 3.35 Ac. Aud. Dup
0.75 ..

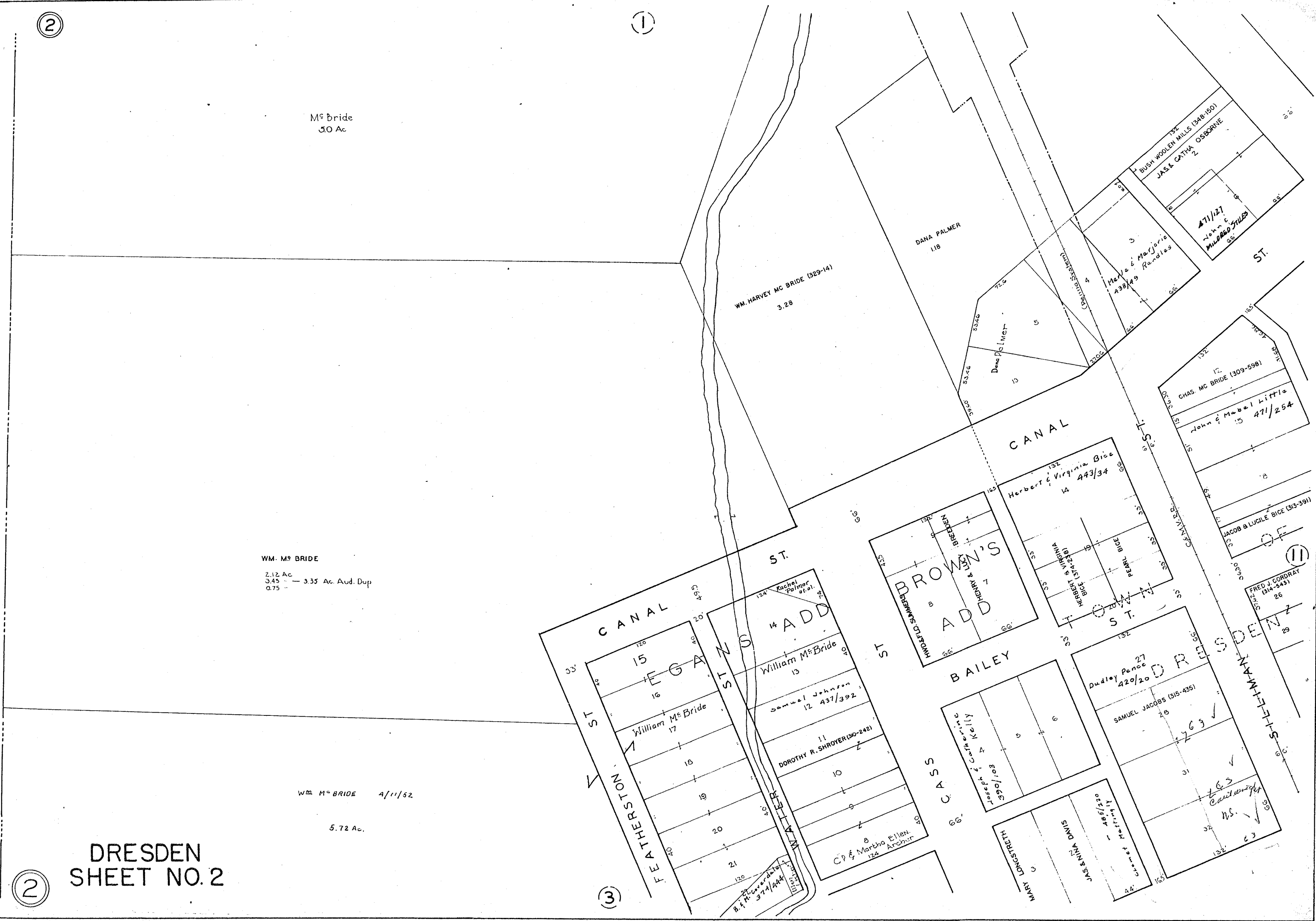
WM M^s BRIDE 4/11/52

5.72 Ac.

DRESDEN SHEET NO. 2

2

3



(2)

(3)

WM. McBRIDE
5.72 Ac. 423/350

Hazel Cox
369/209 377/106

John & Sylvia Smith
487/182
Wm. Gordon 487/182
487/182

Lacella Little 423/347
Joseph & Lila De Vautr
423/508

Donald & Martha
Williams
423/361

PT. ISABEL

JAS & HELEN DAVIS
LANANING'S

CHAS. & PANSY RIPPLE

Brown's Sub. of O.L. #47

Asa & Marilee Williams
427/93

CHAS. BARRIER
367/87

Paul & Evelyn Lee
10-17-51

Mira Pisman
4-11-51
0.15 Ac.

O.L. 2
300 Ac.

O.L. 3
300 Ac.

O.L. 76
57.5 Ac.

Edw. F. Zentmeyer

Karl & Opal McGee
1.00 Ac.
474/217

Glenn & Cathoren Longberger
399 Ac.
O.L. 5

2.00 Ac.
O.L. 4

EAST STREET
DRESDEN SHEET NO. 3

(4)

(3)

4

3

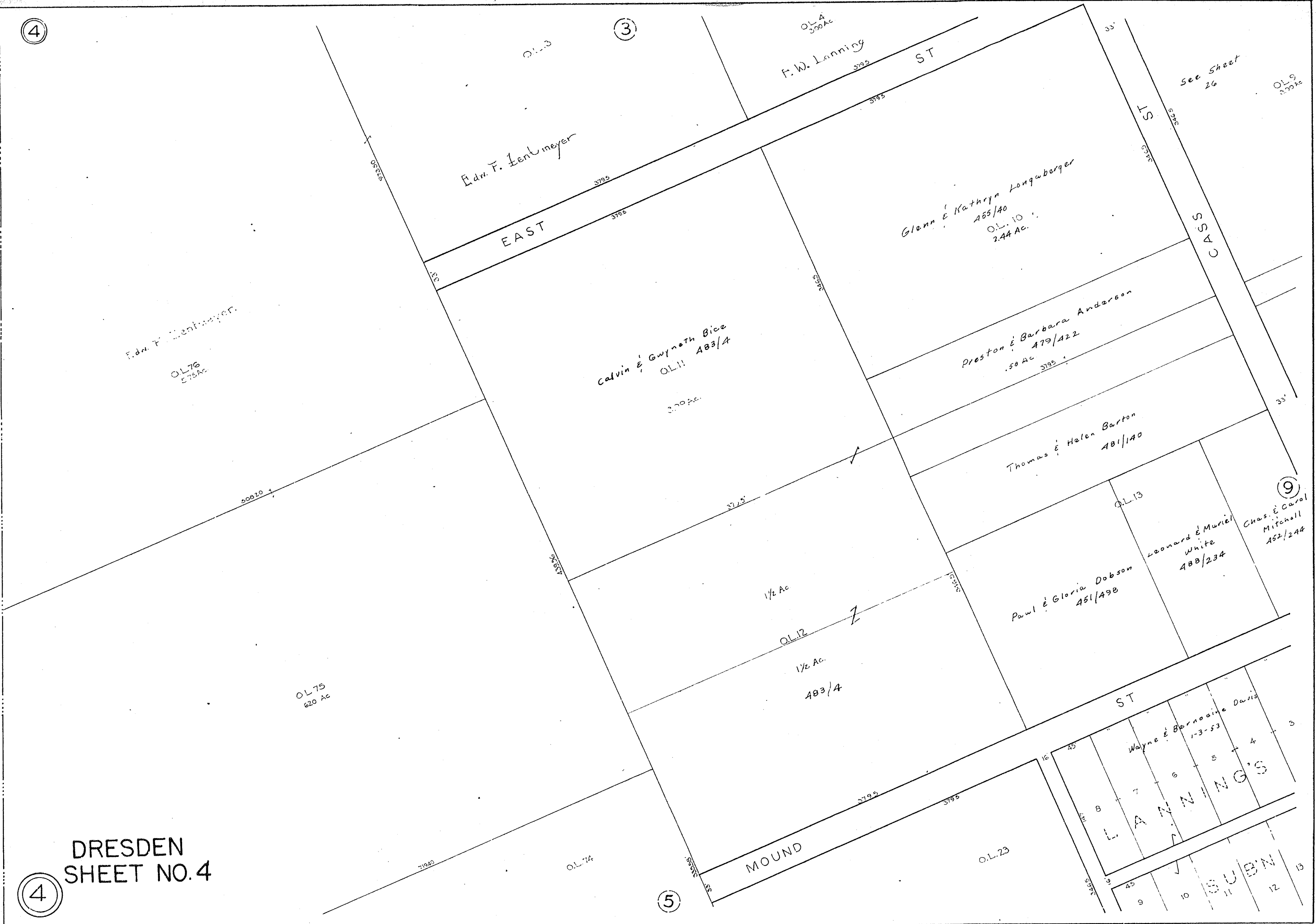
9

4

5

CORPORATION LINE

DRESDEN SHEET NO. 4



See Sheet 26

OL 9
62.0 Ac.

Glenn & Kathryn Longaberger
OL 10
2.44 Ac.

Calvin & Gwyneth Bice
OL 11
.50 Ac.

Preston & Barbara Anderson
OL 12
.50 Ac.

Thomas & Helen Barton
OL 13
.50 Ac.

Paul & Gloria Dobson
OL 14
.50 Ac.

Leonard & Muriel White
OL 15
.50 Ac.

Chas. & Carol Mitchell
OL 16
.50 Ac.

Wayne & Bernadine Davis
OL 17
1-3-53

LANNING'S

SUBEN

O.L. 75
620 Ac.
Edw. F. Zentmeyer

Calvin + Gwyneth Bice
493-4
O.L. 74
620 Ac.

O.L. 23
3.1 Ac.

Wayne + Bernadine Davis
1-3-53
10

Wayne + Bernadine Davis
23 1-3-53
24

Wayne + Bernadine Davis
1-3-53
25

Wayne + Bernadine Davis
1-3-53
O.L. 24
300 Ac.

O.L. 73
6 1/2 A.
5.16 Ac. And Sup.
Wayne + Bernadine Davis 1-3-53

Corporation of Dresden
100 Ac.

6.01 Ac
O.L. 72

Jack + Mary Newcome
483-687
See ff 27 Newcomes Sub
Jul. 71
3.22 Ac.

W.E. Campbell
O.L. 72
3.75

Wayne + Elaine James
483-640

DRESDEN
SHEET NO. 5

4

5

8

6

5

CORPORATION LINE

RIGHT OF WAY

MOUNTAIN ST.

8th ST.

9th

71540

88172

15'

1052.4

1141.5

274.56

138

5161

163

5320

3735'

15' W

3795

3795

12

12

12

45

45

45

15

3795

3795

Jul. 71

3.22 Ac.

6

O.L. 73

Anderson Snyder
4.57 Ac.

2.37 Ac.

National Glove Co.

11415

5

O.L. 72

615.76

300 Ac.

Junior + Kathleen Tignor
453-313

075A

Wayne + Elaine
James
433-640

SOUTH

3195

ST

148.5

861

218.26

O.L. 72
Floyd + Mildred Bice 427-419

6.00A

6.25 Ac. Aud. Dup.

Wm + Lela Campbell
283-346

7

17.48 Ac.
468-641

Corporation Line

O.L. 81

O.L. 81

1600 Ac.

George K. Browning - Trustee

Junior + Kathleen Tignor
468-641

0.25 Ac

DRESDEN

6 SHEET NO. 6

Corporation Line

O.L. 81
17.48 Ac.
Wm. & Lela Campbell

1.69 Ac.

George K. Browning - Trustee
O.L. 81

16 AC.

1.43 Ac.

O.L. 81

3.00 Ac.

DRESDEN
SHEET NO. 7

CORPORATION LINE

8

7

6

18

7

300.0

10 John L. MERTS

Noble

SUB'N

ROLLING SWORE (186-48)

M

S

M

S

VACATED

S

U

S

VACATED

M

S

VACATED

LOCK

ST

101-12-32

101-12-32

101-12-32

101-12-32

101-12-32

101-12-32

101-12-32

101-12-32

101-12-32

101-12-32

101-12-32

101-12-32

101-12-32

101-12-32

101-12-32

101-12-32

101-12-32

101-12-32

101-12-32

101-12-32

101-12-32

101-12-32

101-12-32

101-12-32

101-12-32

101-12-32

101-12-32

101-12-32

101-12-32

101-12-32

101-12-32

101-12-32

101-12-32

101-12-32

101-12-32

101-12-32

101-12-32

101-12-32

101-12-32

101-12-32

101-12-32

101-12-32

101-12-32

101-12-32

101-12-32

101-12-32

101-12-32

101-12-32

101-12-32

101-12-32

101-12-32

101-12-32

101-12-32

101-12-32

101-12-32

101-12-32

101-12-32

101-12-32

101-12-32

101-12-32

101-12-32

101-12-32

101-12-32

101-12-32

101-12-32

101-12-32

101-12-32

101-12-32

101-12-32

101-12-32

101-12-32

101-12-32

101-12-32

101-12-32

101-12-32

101-12-32

101-12-32

101-12-32

101-12-32

101-12-32

101-12-32

101-12-32

101-12-32

101-12-32

101-12-32

101-12-32

101-12-32

101-12-32

101-12-32

101-12-32

101-12-32

101-12-32

101-12-32

101-12-32

101-12-32

101-12-32

101-12-32

101-12-32

101-12-32

101-12-32

101-12-32

101-12-32

101-12-32

101-12-32

101-12-32

101-12-32

101-12-32

101-12-32

101-12-32

101-12-32

101-12-32

101-12-32

101-12-32

101-12-32

101-12-32

101-12-32

101-12-32

101-12-32

101-12-32

101-12-32

101-12-32

101-12-32

101-12-32

101-12-32

101-12-32

101-12-32

101-12-32

101-12-32

101-12-32

101-12-32

101-12-32

101-12-32

101-12-32

101-12-32

101-12-32

101-12-32

101-12-32

101-12-32

101-12-32

101-12-32

101-12-32

101-12-32

101-12-32

101-12-32

101-12-32

101-12-32

101-12-32

101-12-32

101-12-32

101-12-32

101-12-32

101-12-32

101-12-32

101-12-32

101-12-32

101-12-32

101-12-32

101-12-32

101-12-32

101-12-32

101-12-32

101-12-32

101-12-32

101-12-32

101-12-32

101-12-32

101-12-32

101-12-32

101-12-32

101-12-32

101-12-32

101-12-32

101-12-32

101-12-32

101-12-32

101-12-32

101-12-32

101-12-32

101-12-32

101-12-32

101-12-32

101-12-32

101-12-32

101-12-32

101-12-32

101-12-32

101-12-32

101-12-32

101-12-32

101-12-32

101-12-32

101-12-32

101-12-32

101-12-32

101-12-32

101-12-32

101-12-32

101-12-32

101-12-32

101-12-32

101-12-32

101-12-32

101-12-32

101-12-32

101-12-32

101-12-32

101-12-32

101-12-32

101-12-32

101-12-32

101-12-32

101-12-32

101-12-32

101-12-32

101-12-32

101-12-32

101-12-32

101-12-32

101-12-32

101-12-32

101-12-32

101-12-32

101-12-32

101-12-32

101-12-32

101-12-32

101-12-32

101-12-32

101-12-32

101-12-32

101-12-32

101-12-32

101-12-32

101-12-32

101-12-32

101-12-32

101-12-32

101-12-32

101-12-32

101-12-32

101-12-32

101-12-32

101-12-32

101-12-32

101-12-32

101-12-32

101-12-32

101-12-32

101-12-32

101-12-32

101-12-32

101-12-32

101-12-32

101-12-32

101-12-32

101-12-32

101-12-32

101-12-32

101-12-32

101-12-32

101-12-32

101-12-32

101-12-32

101-12-32

101-12-32

101-12-32

101-12-32</

8

9

5

17

8

7



MOUNTAIN

SOUTH

MUSKINGTON

LEMERT

Plaza Homesites
O.L. 69
300 AC.
See Sheet No. 26

NEWCOMES SUB.
SEE SHEET #27

DRESDEN
SHEET NO 8

O.L. 71
Duck & Mary Newcome
483 267
300 AC.

GILBERT & RUTH DOWELL
(377-188)

WM & LELA CAMPBELL

Melvin & Louise Dawson

Hild & Golda Lacy

Grant & Beulah
Rino
490 369

GERALD & ESSIE BROWN (366-194)

HENRY E. HORE

Florence Messenger
55 5/2/51

Earl & Helen Garver
52 493/654

Baldh M. Cortroy

JOHN ALICE PRINCESS

Diace & Carrie C. Clemens

Otto & Marguerita
Zambona
31 470/146 32

Wayne & Bernadine Davis
1-3-53

Wayne & Bernadine
1-3-53

Norma Rino 403/400

Firestone & Sway 5000
442/654

Stetson & Allen
11/2

Harry & ...
488/354

Valerius & ...
11/34/47

WATER BESE BANK (3030)

John & ...
42/52

LILIAN ALMAN (382-88)

Wayne & ...
493/575

LANAN

LANAN

LANAN

LANAN

LANAN

LANAN

LANAN

LANAN

LANAN

LANAN

LANAN

LANAN

100 AC

O.L. 70
176 AC

10TH

487/505

RUSSELL BAGENT (365-88)

EDITH BAGENT

Edith Bagent

Edith Bagent

Edith Bagent

Edith Bagent

Edith Bagent

Edith Bagent

Edith Bagent

Edith Bagent

Edith Bagent

MABEL & HOWARD SHERTON (348-22)

Mrs. Mabel Kay Garner

MABEL HOWARD SHERTON

MABEL HOWARD SHERTON

MABEL HOWARD SHERTON

MABEL HOWARD SHERTON

MABEL HOWARD SHERTON

MABEL HOWARD SHERTON

MABEL HOWARD SHERTON

MABEL HOWARD SHERTON

MABEL HOWARD SHERTON

MABEL HOWARD SHERTON

MABEL HOWARD SHERTON

MABEL HOWARD SHERTON

MABEL HOWARD SHERTON

MABEL HOWARD SHERTON

MABEL HOWARD SHERTON

MABEL HOWARD SHERTON

MABEL HOWARD SHERTON

MABEL HOWARD SHERTON

MABEL HOWARD SHERTON

MABEL HOWARD SHERTON

MABEL HOWARD SHERTON

MABEL HOWARD SHERTON

MABEL HOWARD SHERTON

MABEL HOWARD SHERTON

MABEL HOWARD SHERTON

MABEL HOWARD SHERTON

MABEL HOWARD SHERTON

MABEL HOWARD SHERTON

MABEL HOWARD SHERTON

MABEL HOWARD SHERTON

MABEL HOWARD SHERTON

MABEL HOWARD SHERTON

MABEL HOWARD SHERTON

MABEL HOWARD SHERTON

MABEL HOWARD SHERTON

MABEL HOWARD SHERTON

MABEL HOWARD SHERTON

MABEL HOWARD SHERTON

MABEL HOWARD SHERTON

MABEL HOWARD SHERTON

MABEL HOWARD SHERTON

MABEL HOWARD SHERTON

MABEL HOWARD SHERTON

MABEL HOWARD SHERTON

MABEL HOWARD SHERTON

MABEL HOWARD SHERTON

MABEL HOWARD SHERTON

MABEL HOWARD SHERTON

MABEL HOWARD SHERTON

MABEL HOWARD SHERTON

MABEL HOWARD SHERTON

MABEL HOWARD SHERTON

MABEL HOWARD SHERTON

MABEL HOWARD SHERTON

MABEL HOWARD SHERTON

MABEL HOWARD SHERTON

MABEL HOWARD SHERTON

MABEL HOWARD SHERTON

MABEL HOWARD SHERTON

MABEL HOWARD SHERTON

MABEL HOWARD SHERTON

MABEL HOWARD SHERTON

MABEL HOWARD SHERTON

MABEL HOWARD SHERTON

MABEL HOWARD SHERTON

MABEL HOWARD SHERTON

MABEL HOWARD SHERTON

MABEL HOWARD SHERTON

MABEL HOWARD SHERTON

MABEL HOWARD SHERTON

MABEL HOWARD SHERTON

MABEL HOWARD SHERTON

MABEL HOWARD SHERTON

MABEL HOWARD SHERTON

MABEL HOWARD SHERTON

MABEL HOWARD SHERTON

MABEL HOWARD SHERTON

MABEL HOWARD SHERTON

MABEL HOWARD SHERTON

MABEL HOWARD SHERTON

MABEL HOWARD SHERTON

MABEL HOWARD SHERTON

MABEL HOWARD SHERTON

MABEL HOWARD SHERTON

MABEL HOWARD SHERTON

MABEL HOWARD SHERTON

MABEL HOWARD SHERTON

MABEL HOWARD SHERTON

MABEL HOWARD SHERTON

MABEL HOWARD SHERTON

MABEL HOWARD SHERTON

MABEL HOWARD SHERTON

MABEL HOWARD SHERTON

MABEL HOWARD SHERTON

MABEL HOWARD SHERTON

MABEL HOWARD SHERTON

MABEL HOWARD SHERTON

MABEL HOWARD SHERTON

MABEL HOWARD SHERTON

MABEL HOWARD SHERTON

MABEL HOWARD SHERTON

MABEL HOWARD SHERTON

MABEL HOWARD SHERTON

MABEL HOWARD SHERTON

MABEL HOWARD SHERTON

MABEL HOWARD SHERTON

MABEL HOWARD SHERTON

MABEL HOWARD SHERTON

MABEL HOWARD SHERTON

MABEL HOWARD SHERTON

MABEL HOWARD SHERTON

MABEL HOWARD SHERTON

MABEL HOWARD SHERTON

MABEL HOWARD SHERTON

MABEL HOWARD SHERTON

MABEL HOWARD SHERTON

MABEL HOWARD SHERTON

MABEL HOWARD SHERTON

MABEL HOWARD SHERTON

MABEL HOWARD SHERTON

MABEL HOWARD SHERTON

MABEL HOWARD SHERTON

MABEL HOWARD SHERTON

MABEL HOWARD SHERTON

MABEL HOWARD SHERTON

MABEL HOWARD SHERTON

MABEL HOWARD SHERTON

MABEL HOWARD SHERTON

MABEL HOWARD SHERTON

MABEL HOWARD SHERTON

MABEL HOWARD SHERTON

MABEL HOWARD SHERTON

MABEL HOWARD SHERTON

MABEL HOWARD SHERTON

MABEL HOWARD SHERTON

MABEL HOWARD SHERTON

MABEL HOWARD SHERTON

MABEL HOWARD SHERTON

MABEL HOWARD SHERTON

MABEL HOWARD SHERTON

MABEL HOWARD SHERTON

MABEL HOWARD SHERTON

MABEL HOWARD SHERTON

MABEL HOWARD SHERTON

MABEL HOWARD SHERTON

MABEL HOWARD SHERTON

MABEL HOWARD SHERTON

MABEL HOWARD SHERTON

MABEL HOWARD SHERTON

MABEL HOWARD SHERTON

MABEL HOWARD SHERTON

MABEL HOWARD SHERTON

MABEL HOWARD SHERTON

MABEL HOWARD SHERTON

MABEL HOWARD SHERTON

MABEL HOWARD SHERTON

MABEL HOWARD SHERTON

MABEL HOWARD SHERTON

MABEL HOWARD SHERTON

MABEL HOWARD SHERTON

MABEL HOWARD SHERTON

MABEL HOWARD SHERTON

MABEL HOWARD SHERTON

MABEL HOWARD SHERTON

MABEL HOWARD SHERTON

MABEL HOWARD SHERTON

MABEL HOWARD SHERTON

MABEL HOWARD SHERTON

MABEL HOWARD SHERTON

MABEL HOWARD SHERTON

MABEL HOWARD SHERTON

MABEL HOWARD SHERTON

MABEL HOWARD SHERTON

MABEL HOWARD SHERTON

MABEL HOWARD SHERTON

MABEL HOWARD SHERTON

MABEL HOWARD SHERTON

MABEL HOWARD SHERTON

MABEL HOWARD SHERTON

MABEL HOWARD SHERTON

MABEL HOWARD SHERTON

MABEL HOWARD SHERTON

MABEL HOWARD SHERTON

MABEL HOWARD SHERTON

MABEL HOWARD SHERTON

MABEL HOWARD SHERTON

MABEL HOWARD SHERTON

MABEL HOWARD SHERTON

MABEL HOWARD SHERTON

MABEL HOWARD SHERTON

MABEL HOWARD SHERTON

MABEL HOWARD SHERTON

MABEL HOWARD SHERTON

MABEL HOWARD SHERTON

MABEL HOWARD SHERTON

MABEL HOWARD SHERTON

MABEL HOWARD SHERTON

MABEL HOWARD SHERTON

MABEL HOWARD SHERTON

MABEL HOWARD SHERTON

MABEL HOWARD SHERTON

MABEL HOWARD SHERTON

MABEL HOWARD SHERTON

MABEL HOWARD SHERTON

MABEL HOWARD SHERTON

MABEL HOWARD SHERTON

MABEL HOWARD SHERTON

MABEL HOWARD SHERTON

MABEL HOWARD SHERTON

MABEL HOWARD SHERTON

MABEL HOWARD SHERTON

MABEL HOWARD SHERTON

MABEL HOWARD SHERTON

MABEL HOWARD SHERTON

MABEL HOWARD SHERTON

OL 9
S22 Sheet 26
3.00Ac



DRESDEN SHEET NO. 9

9



10

11

3

10

9

15

DRESDEN SHEET NO. 10

KENNETH & LOIS LACY 327/121
Paul & Lucie 1017-9
Paul & Lucie 38

E. & Beatrice Cullins 440/177

JOHN COX 4A 264/102

TALMADGE & GEORGIA HAGUE 313/266

GLENN & KATHAYN LONGBERGER 384/377

JAMES & VIRGINIA CURTIS 307/580
436/505

Elmer & Barbara Younkens 434/509

Robert & Dollie James 101/1452

See Sheet # 20

EDISON & OGLE 360/76

Chas Bice 40

Allice Hahn 392/17

Denzie Lloyd 43

John P. Hyde

BERTHA KING ET AL. 183

OL5

W M

STAKIA & VIRGINIA TAYLOR 382/175
458/49

Ruth Gilliland 469/41

EMMA & ESTHER PUTNER

Bertha Gene et al.

Dorthea Jones 25 492/493

Catholic Church 26

J.F. Hortley DD 37

GRACE COVERDALE 323/255

Russell & Hazel Minner 491/513

Wanda Frazier 491/516

WARREN & DORA SPIKER 340/29

Fredrick & Doisey Starwars 13

A.R. & Flora Little 11/14/52

FLOY MILDRED STEPHENS 312/46

Virgil & Ellen Mullinax 328/283

Walter & Hazel King 27 5-4-51

JOSEPH & MARY MCCLINTOCK 221/254

Julian Kullman 36

Wm. Corday 8/1/51

Dayle & Virginia Barrow 427/212

Gerald & Dorothy Lucy 427/21

CLARENCE & MINA 310/228

Lettie A Lanning

RAYMOND SPIKER 385/301

Maude Danson 15 480/134

CATHERINE OBENDIER 323/333

Max & Marjorie Brennan 444/621

H. E. & IRENE STULLER 323/467

Madge Strawn 3/29/51

Lulu Kendall

Lawrence & Anna King 40 49/133

Z. E. M. Burdette 443/107

CHESTER & THELMA WOLFORD 329/580

T.A. & Vera Cannon

DELBERT & GRACE PENCE 361/266

LILLIAN & LILLIAN ALTMAN 385/291

Hattie Odessa Cullins

George & Virginia Halbling 407/560

Edna Frazier 419/530

Joseph & Leona Wagner 7 491/175

ROBT. J. FROZIER 315/408

VIVIAN MATTHEW

E. E. H. Lacy 451/338

MAY CASNER 492/217

HELEN HOMAS 400/480

HELEN BAUGHN 423/107

MANNIE COPLAND 475/207

FRED & MARY LIPPINCOTT 451/155

RAYMOND BOWEN 326/168

EARLE L. STARNER 361/508

H. E. M. Sarbaugh 447/177

VIRGINIA & CLYDE CRANFORD 307/253

BETTY & WALTER ROBERTS 326/113

WALTER & VIOLA PAISLEY 352/382

Clinton Senter 473/248

Joe & Edith Grimes 41 456/89

Div. of Aid for the Aged

Iona Skelly

CHAS. & WMA R. KING 339/493

CHAS. & A. L. SETTLES 309/498

A. L. Rom 1919 430/51

NOT on dup

Lorenzo & Anna Cann 460/806

Standard Oil Co.

RUTH MARLATT 429/26

Russell Cordray 353/181

447/427

48

47 Chas. D. Koin

66 John & Bernice Arnold 453/664

ERNEST ANNA 348/159

COX

SWADAMS

D. F. Anquish

SWADAMS SUB

SWADAMS SUB

SWADAMS SUB

WALTER & BEATRICE CULLINS 440/177

JOHN COX 4A 264/102

TALMADGE & GEORGIA HAGUE 313/266

BERTHA KING ET AL. 183

GLENN & KATHAYN LONGBERGER 384/377

JAMES & VIRGINIA CURTIS 307/580

Elmer & Barbara Younkens 434/509

Robert & Dollie James 101/1452

WARREN & DORA SPIKER 340/29

Fredrick & Doisey Starwars 13

A.R. & Flora Little 11/14/52

FLOY MILDRED STEPHENS 312/46

Lettie A Lanning

H. E. & IRENE STULLER 323/467

Madge Strawn 3/29/51

Lulu Kendall

Lawrence & Anna King 40 49/133

Z. E. M. Burdette 443/107

CHESTER & THELMA WOLFORD 329/580

T.A. & Vera Cannon

DELBERT & GRACE PENCE 361/266

LILLIAN & LILLIAN ALTMAN 385/291

Hattie Odessa Cullins

George & Virginia Halbling 407/560

Edna Frazier 419/530

Joseph & Leona Wagner 7 491/175

ROBT. J. FROZIER 315/408

VIVIAN MATTHEW

E. E. H. Lacy 451/338

MAY CASNER 492/217

HELEN HOMAS 400/480

HELEN BAUGHN 423/107

MANNIE COPLAND 475/207

FRED & MARY LIPPINCOTT 451/155

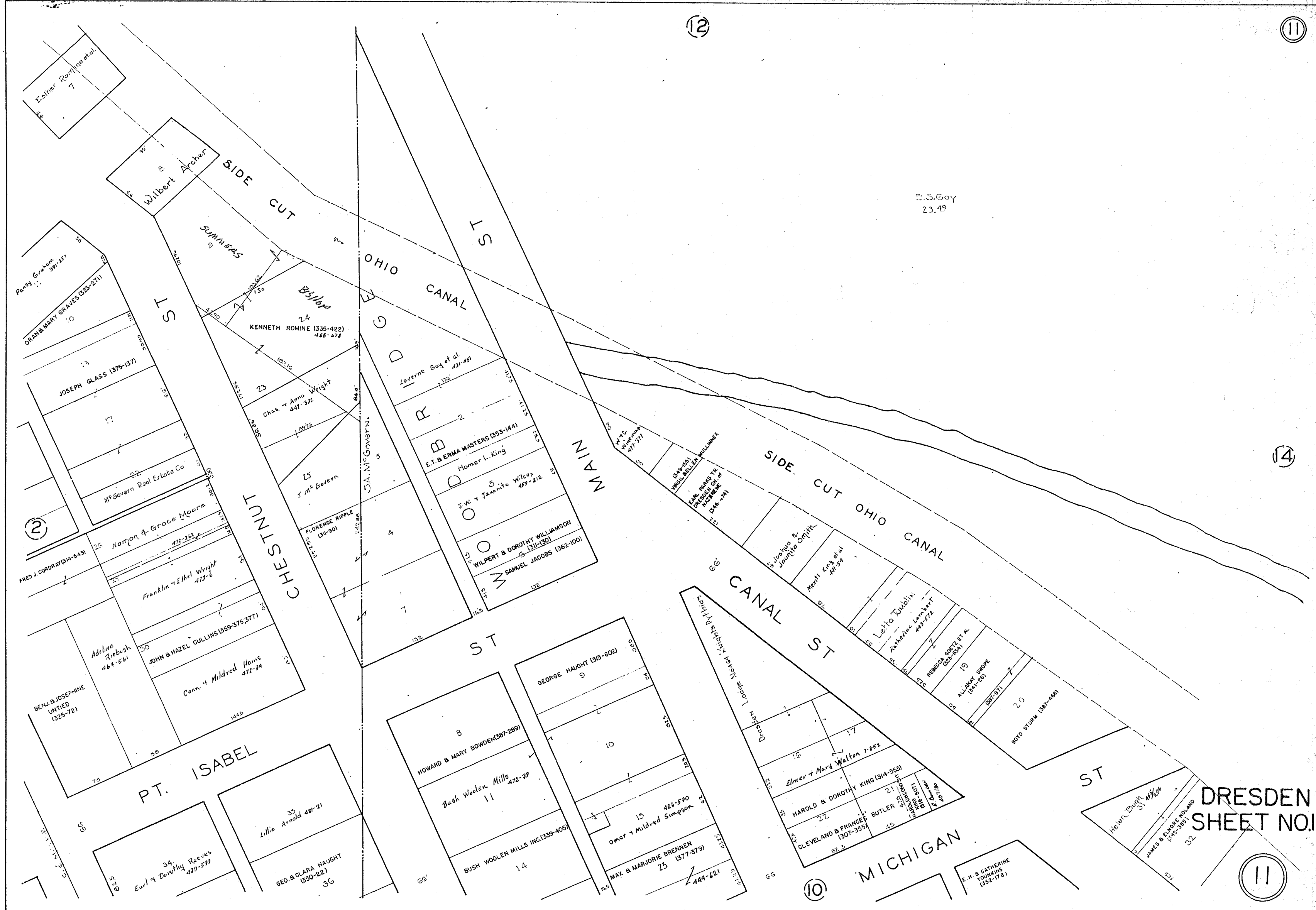
RAYMOND BOWEN 326/168

EARLE L. STARNER 361/508

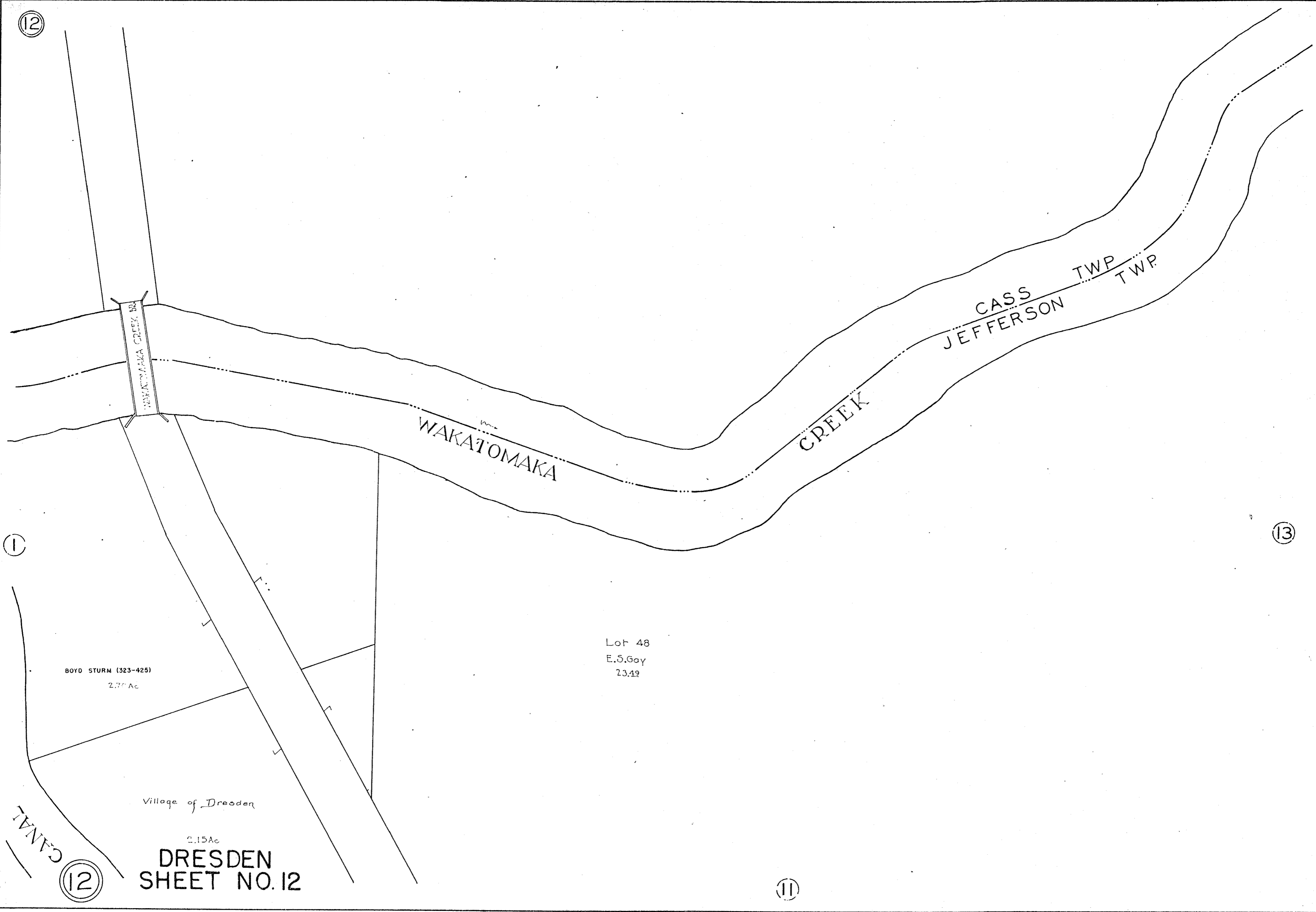
H. E. M. Sarbaugh 447/177

C. A. & Francis Butler

E.S. Goy
23.49



12



WAKATOMAKA CREEK BR

CASS TWP
JEFFERSON TWP

WAKATOMAKA

CREEK

BOYO STURN (323-425)
2.77 Ac

Lot 48
E.S.Goy
23.42

Village of Dresden

2.15Ac

DRESDEN
SHEET NO. 12

CANAL

12

11

13

1

CORPORATION LINE

CITY OF DRESDEN

WAKATOMAKA

CASS TWP
JEFFERSON TWP

GREEK

E. S. Gay.

Russell P. Keys
Lot 49

Karl Henry Eschman
Lot 50

DRESDEN
SHEET NO. 13

12

24

14

13

W. & L. E.

R. P.

4

13

E.S. Gay
2342

11

W. & L. E.
R. R.

ELMER & ESTHER RUTTER (329-242)
110 Ac

W O O D B R I D G E

5
105 Ac.

4

3

7

8

Carl. Henry. Eschman

Carl. Henry. Eschman

DRESDEN
SHEET NO. 14

Lewis Swope
44

14

15

23





W O O D B R I D G E

Karl. Henry. Eschmann

ELMER & ESTHER RUTTER (329-242)

SEWER

SIDE CUT OF OHIO CANAL

W. & L.E. R.R.

AGNES ESCHMAN 1/2
KARL HENRY ESCHMAN (365-354)

DRESDEN SHEET NO. 15

Village of Dresden
471/336

15

14

10

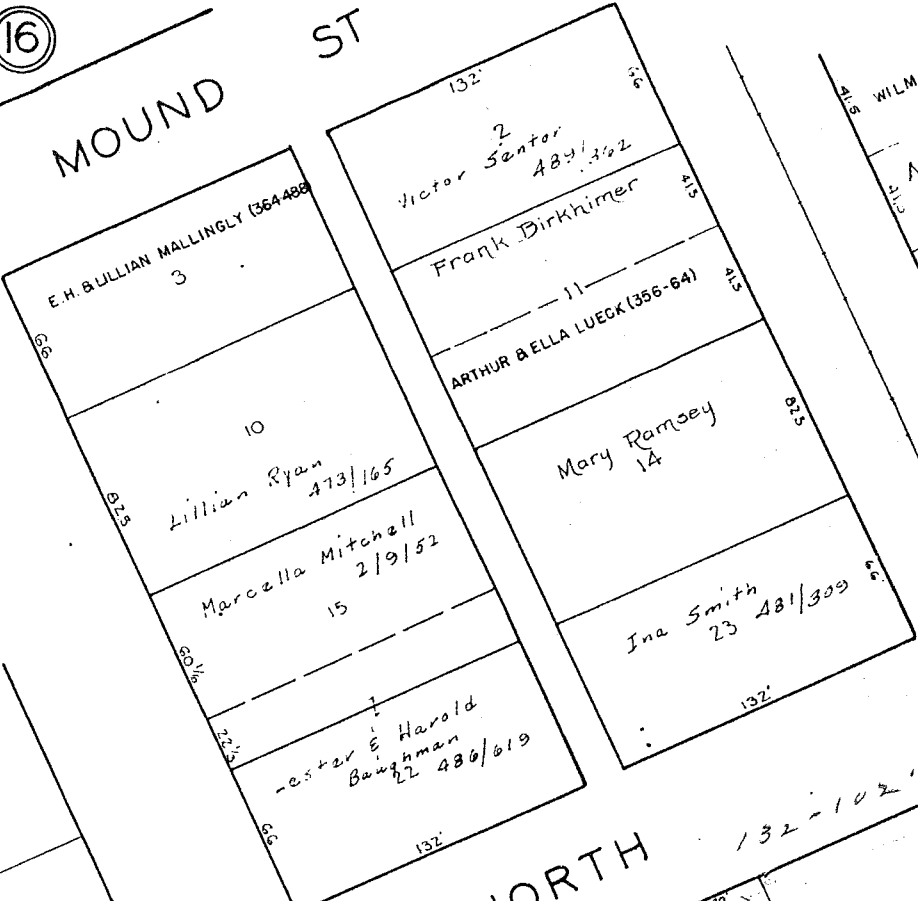
22

16

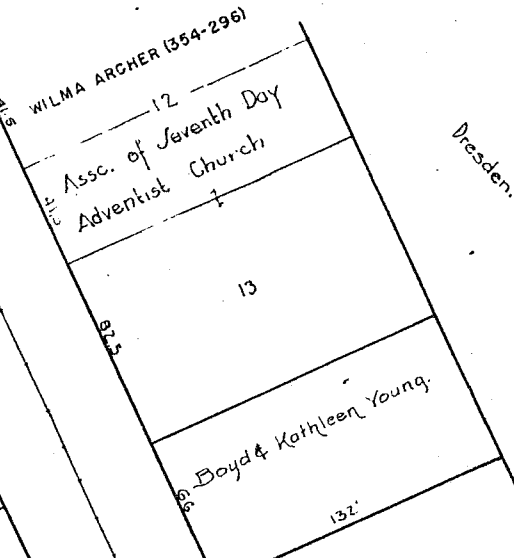
15

16

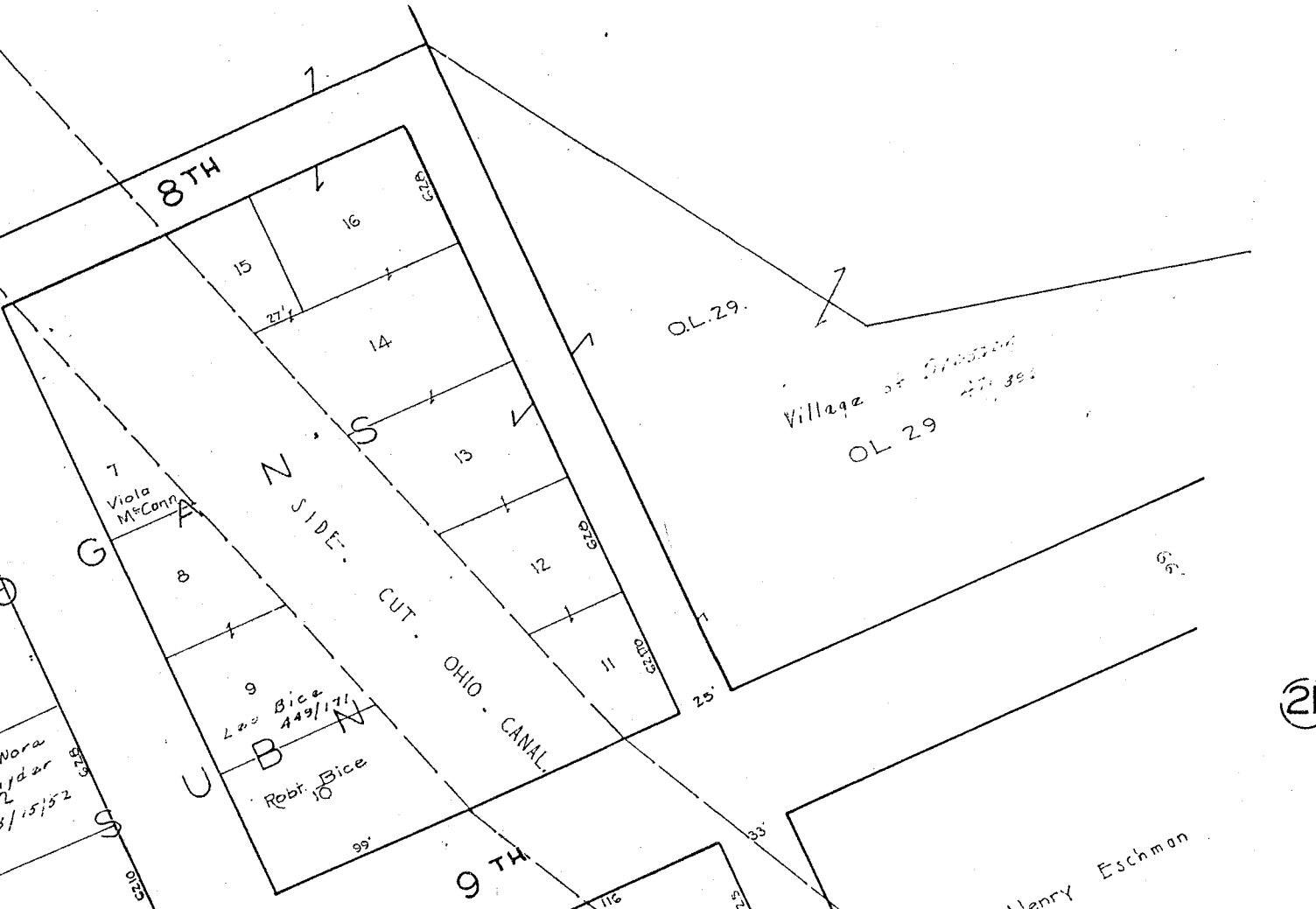
MOUND ST



15



ST

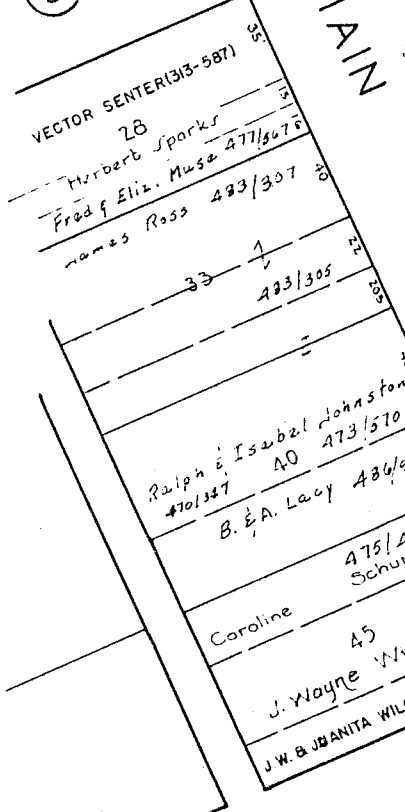


8TH

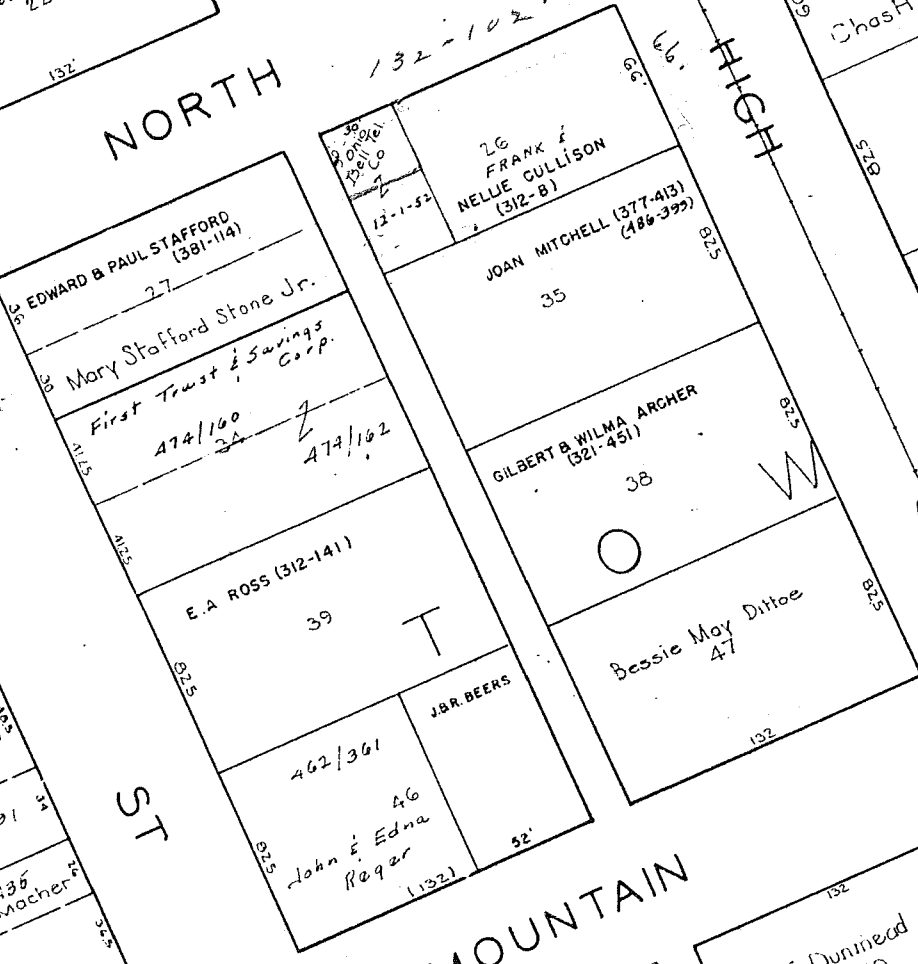
9TH

9

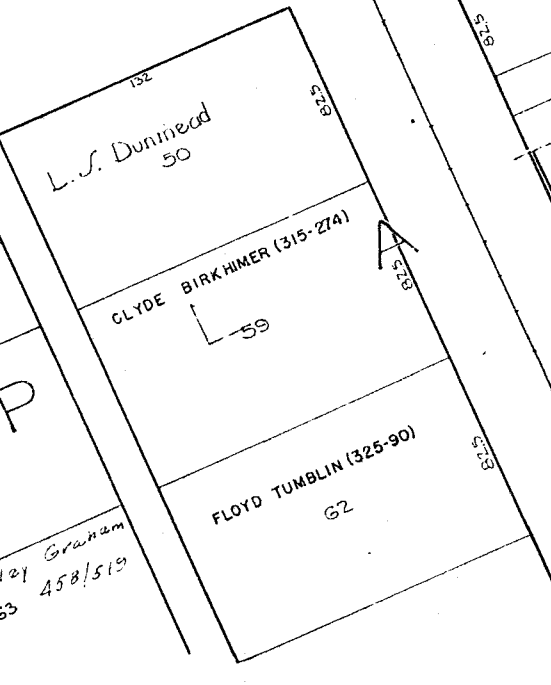
MAIN ST



NORTH



MOUNTAIN

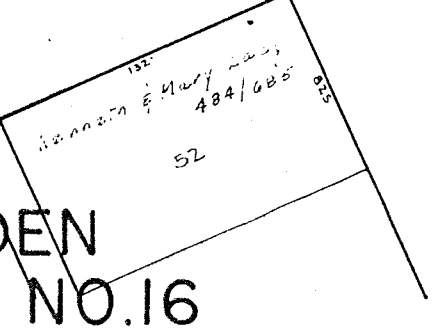


ST

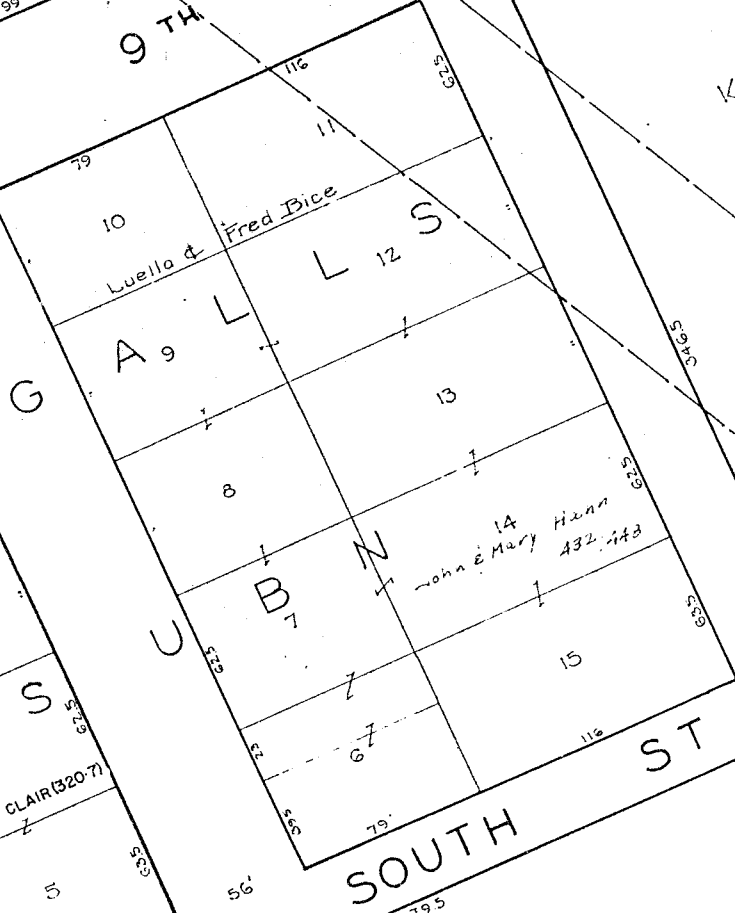
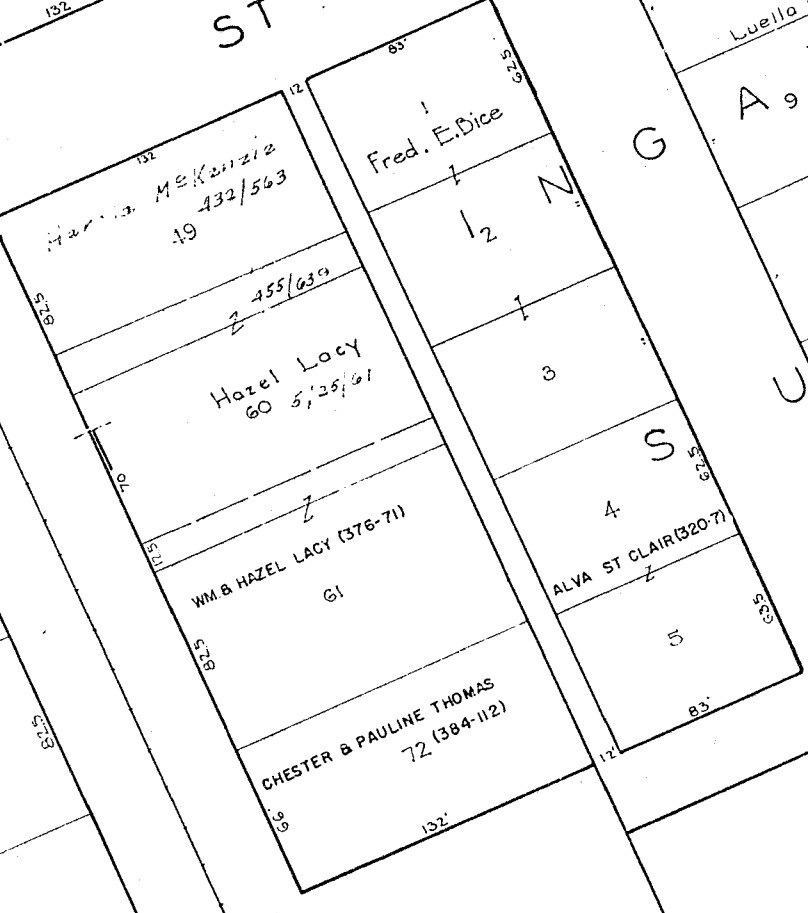
ST

DRESDEN SHEET NO. 16

16



17



SOUTH ST

State of Ohio

21



(17)

(20)

(17)

DRESDEN SHEET NO. 17

Trustees of Board of Ed. of Jefferson Twp.

GEN. PLAN

(8)

(16)

(18)



O.L. 55.
300 Ac.

O.L. 54.
RAYMOND & GERTRUDE GARRETT
323/212
30 Ac.

O.L. 62.
2 Ac.

Village of Dresden, Ohio
484/564
4th '64

O.L. 61
300 Ac.

O.L. 60
300 Ac.

J. W. & JUANITA WILCOX

P.C. McGovern
0.96 Ac.

O.L. 63
3.50 A
3.70 Ac. And Dup.

O.L. 64
300 Ac.

O.L. 64

John N. Miller
0.52 Ac.

O.L. 59
532 Ac.
244 Ac. And Dup.

J. W. & Juanita Wilcox
O.L. 65
3.7 Ac.

O.L. 67
216 A

DRESDEN
SHEET NO. 19

CORPORATION LINE

1/4 TWP LOT LINE

MUSKINGUM RIVER

18

20

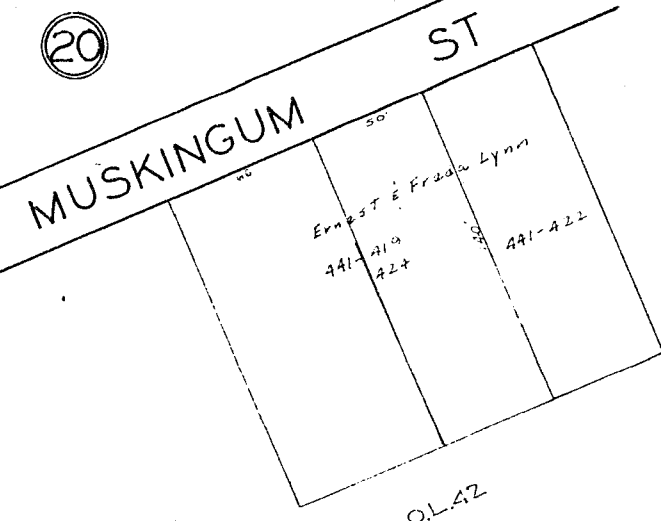
19

19

20

21

25



OL 41
 board of Education of Jefferson Twp

WILLIARD & CROZIER
 MARGARET
 1/2 ACRES

board of Education of Jefferson Twp.

EST. 454/228
 Sheldon Crozier
 HERBERT & BERNICE KAMBY
 369/39

OL 51
 7.1 Ac.
 10.0 Ac. Aud. Dup.

Brunn Coal Co. Inc.
 388/885

128 Ac.

OL 43
 3755

BOARD OF EDUCATION OF JEFFERSON TWP.
 BOARD OF SCHOOLS
 PAUL 380/382

Sarah Paynter

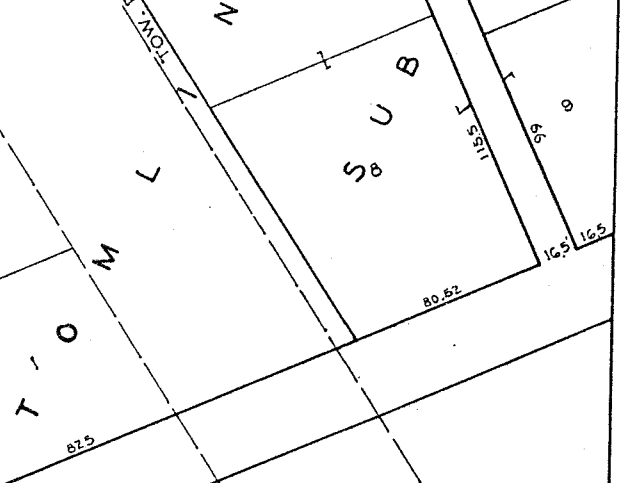
Sarah Paynter

Chas. & Florence Crozier
 429/620

17

OL 49

ROAD
 Village of Dresden Ohio



Sarah E. Paynter
 .84 Ac.

OL 52
 88 Ac.
 38 Ac.
 OL 52

MUSKINGUM R.

OL 48

Cemetery

LOCK
 3795

RAYMOND & GERTRADE GARRETT
 323/212

OL 54

OL 53

DRESDEN SIDE-CUT OF OHIO CANAL

DRESDEN SHEET NO. 20

20

19

MOUNTAIN ST

MUSKINGUM ST

ST

SUB

O.L. 77

O.L. 30

O.L. 31

O.L. 32

O.L. 39

O.L. 33

O.L. 38

Muskingum County
300 Ac.

J. H. Miller
153-574

John H Miller
1.5 Ac.

GERALD & DOROTHY
LACY
(329-361)
17

18
Mrs. & Alice
Hulliner
781/162

19
Mrs. Smith

20
Ada C. Forker

21
Ross & Lester Cheek

22
Ira Smith

DRESDEN

SIDE CUT OHIO CANAL
Bd. of Education of Jefferson School Dist.

BOARD OF EDUCATION OF JEFFERSON
SCHOOL DISTRICT
340-470
2.45 Ac.
O.L. 36

Junior & Frances
Berry
453/169
0.55 Ac.

Board of Education
of
Jefferson School Dist.

Grade 3 Girls
Mentorship

Beams Co. Co. 388/385

DRESDEN
SHEET NO. 21

22

23

12

11

WOODBRIDGE'S

Karl Henry Eschman

176.22

176.22

247.5

21

22

A D D ' N

247.5

247.5

AGNES ESCHMAN 1/2 (356-354)
Karl Henry Eschman
99.20Ac

176.22

176.22

15

O.L.77

317.5

O.L.78

Karl Henry Eschman

305.2

O.L.79

343.8

O.L.80

317.6

MOUNTAIN

ST.

Karl Henry Eschman
O.L.30

25

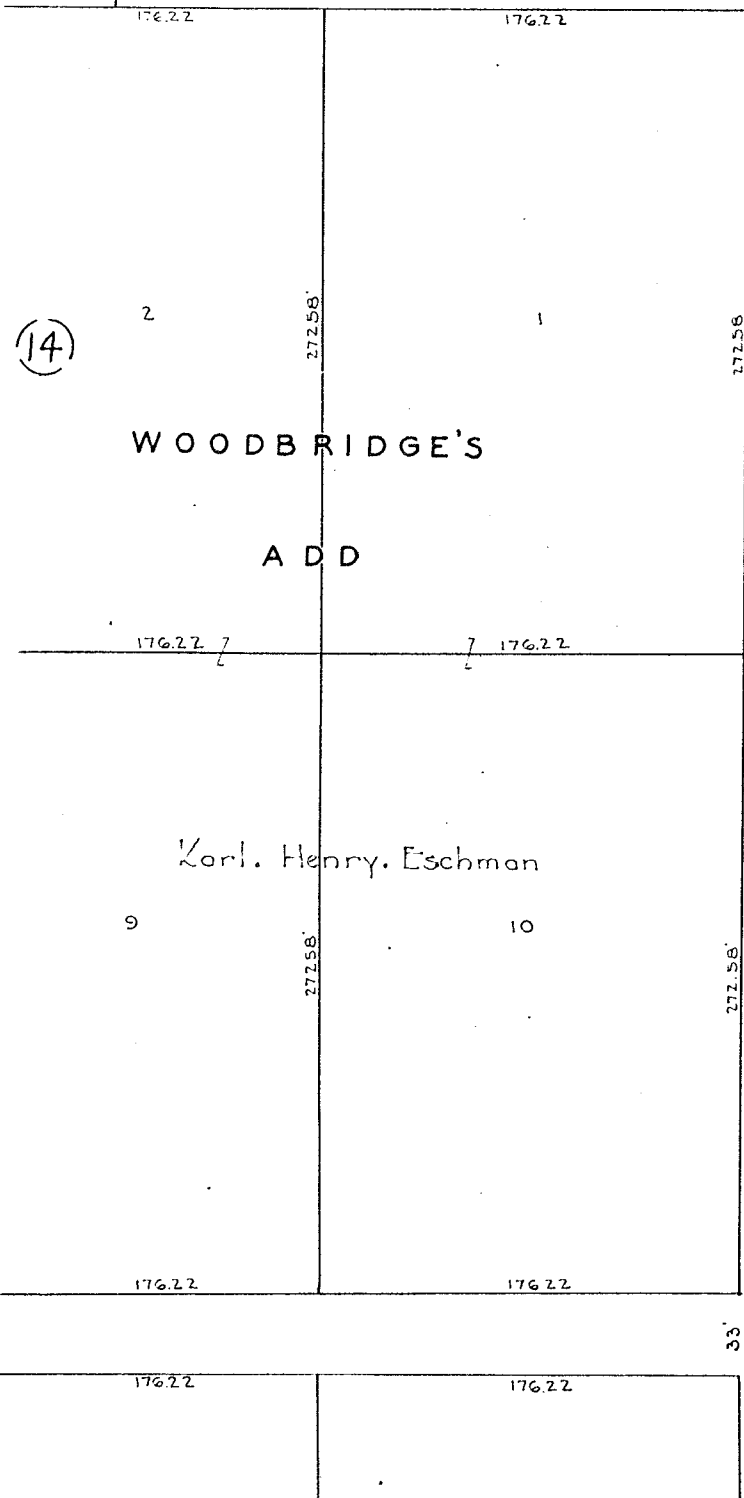
21

DRESDEN SHEET NO.22

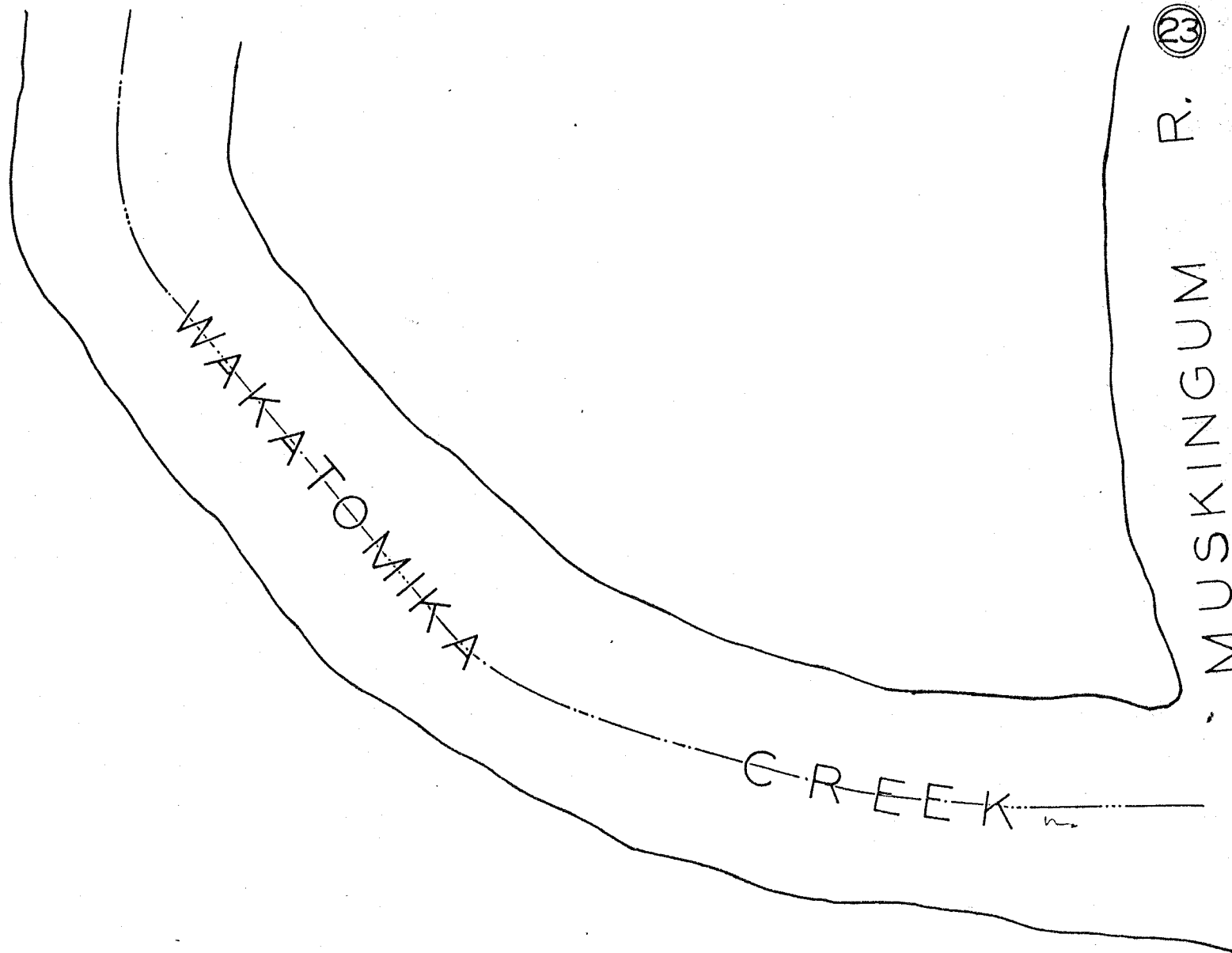
22

Emma Keys Lot 49

Karl Henry Eschman
Lot 50



24



AGNES ESCHMAN 1/2 (356-354)
Karl Henry Eschman
99.20 Ac.

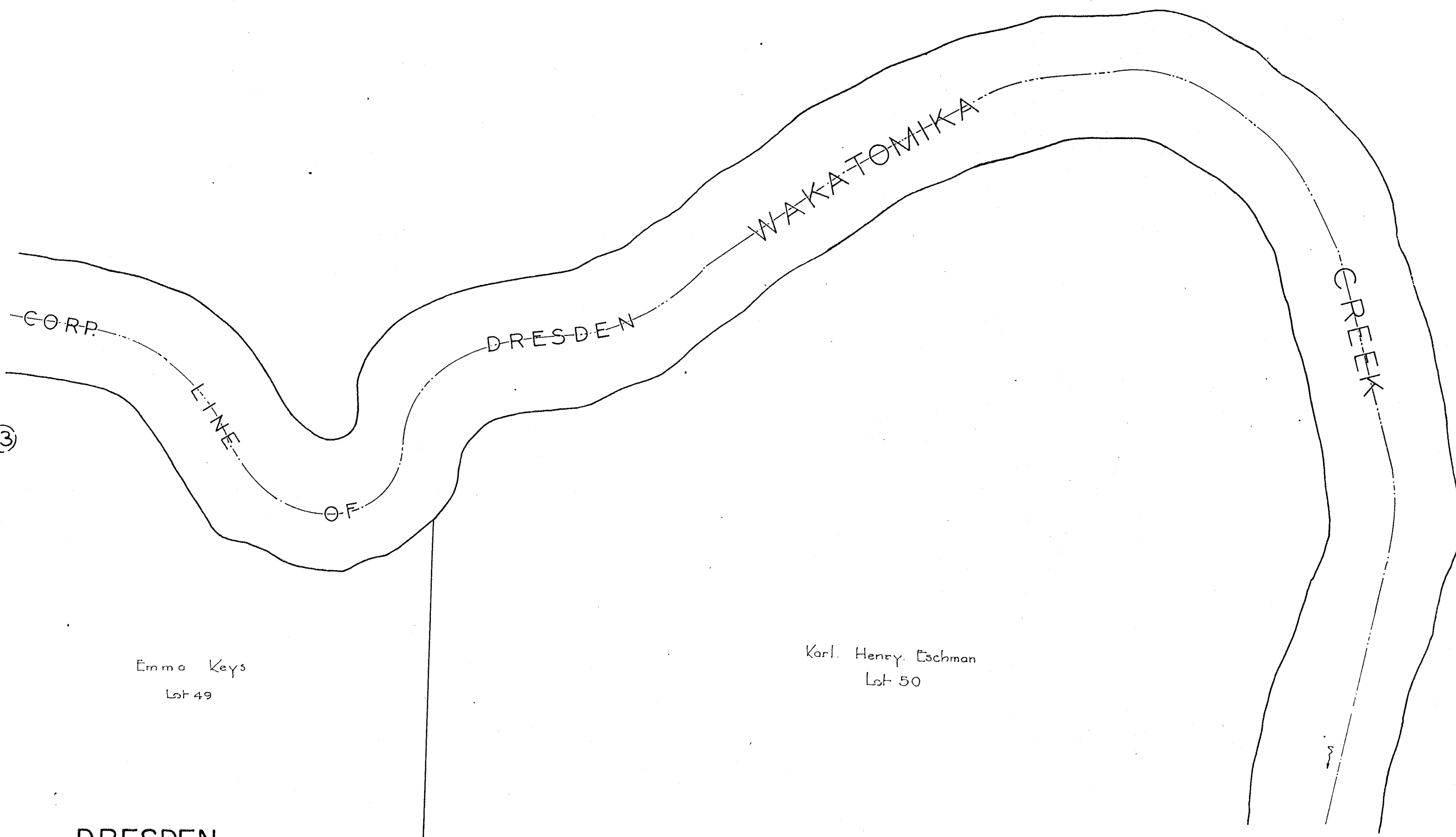
22

DRESDEN
SHEET NO. 23

23

24

13

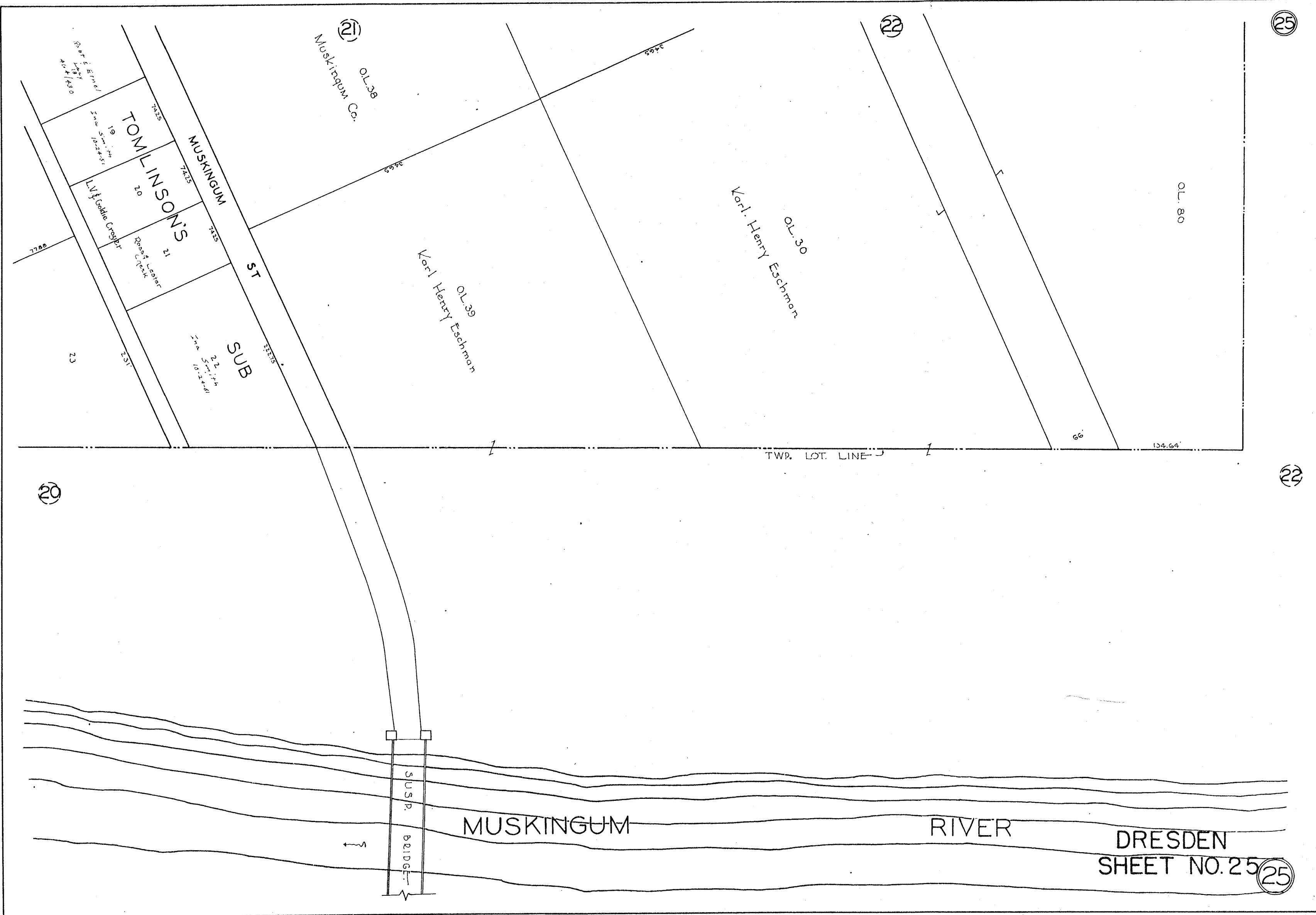


Emma Keys
Lot 49

Karl. Henry. Eschman
Lot 50

24 DRESDEN SHEET NO. 24

23



(21)
Muskington Co.
O.L. 38

(22)

(25)

7425
7425
7425
7425
TOMLINSON'S
19
20
21
22
23

19
20
21
22
23

SUB

ST

Karl Henry Eschman
O.L. 39

Karl Henry Eschman
O.L. 30

O.L. 80

TWP. LOT. LINE

(20)

(22)

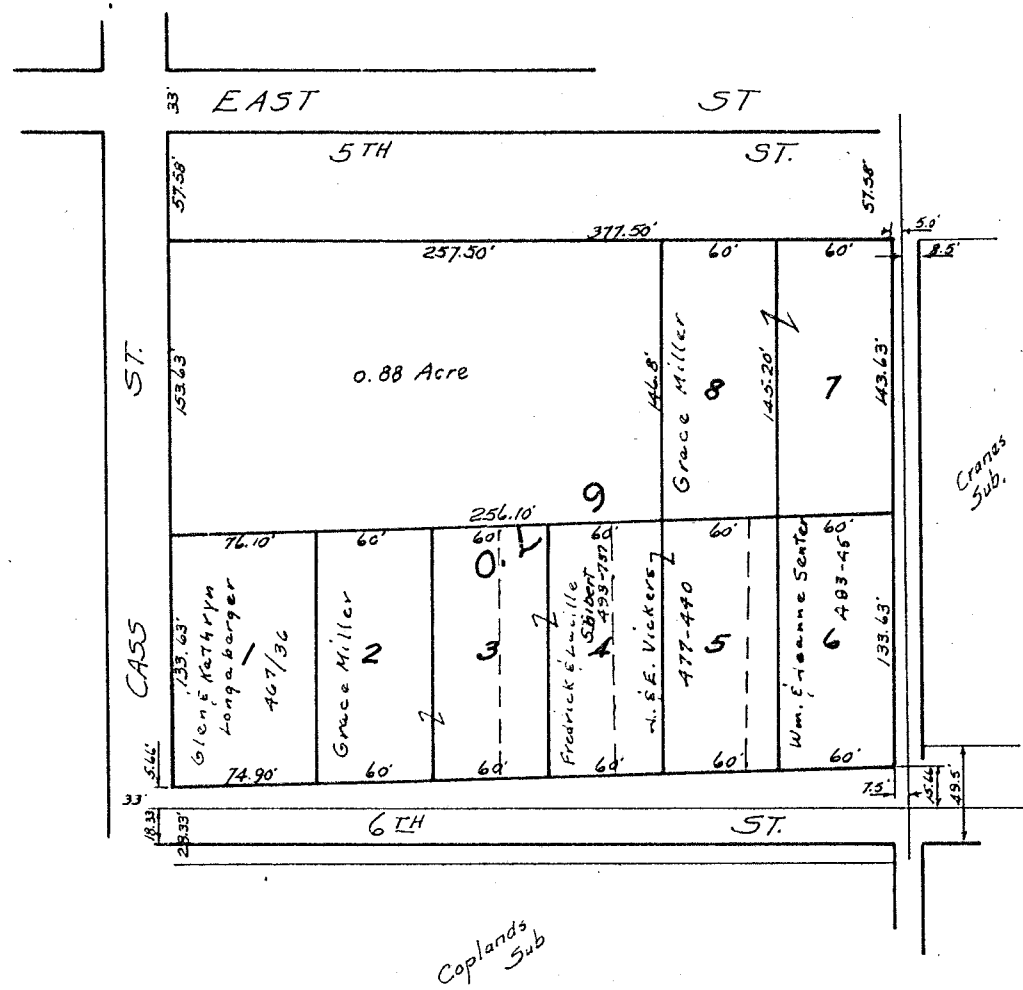
MUSKINGUM

RIVER

SUSP.
BRIDGE

DRESDEN
SHEET NO. 25

(25)

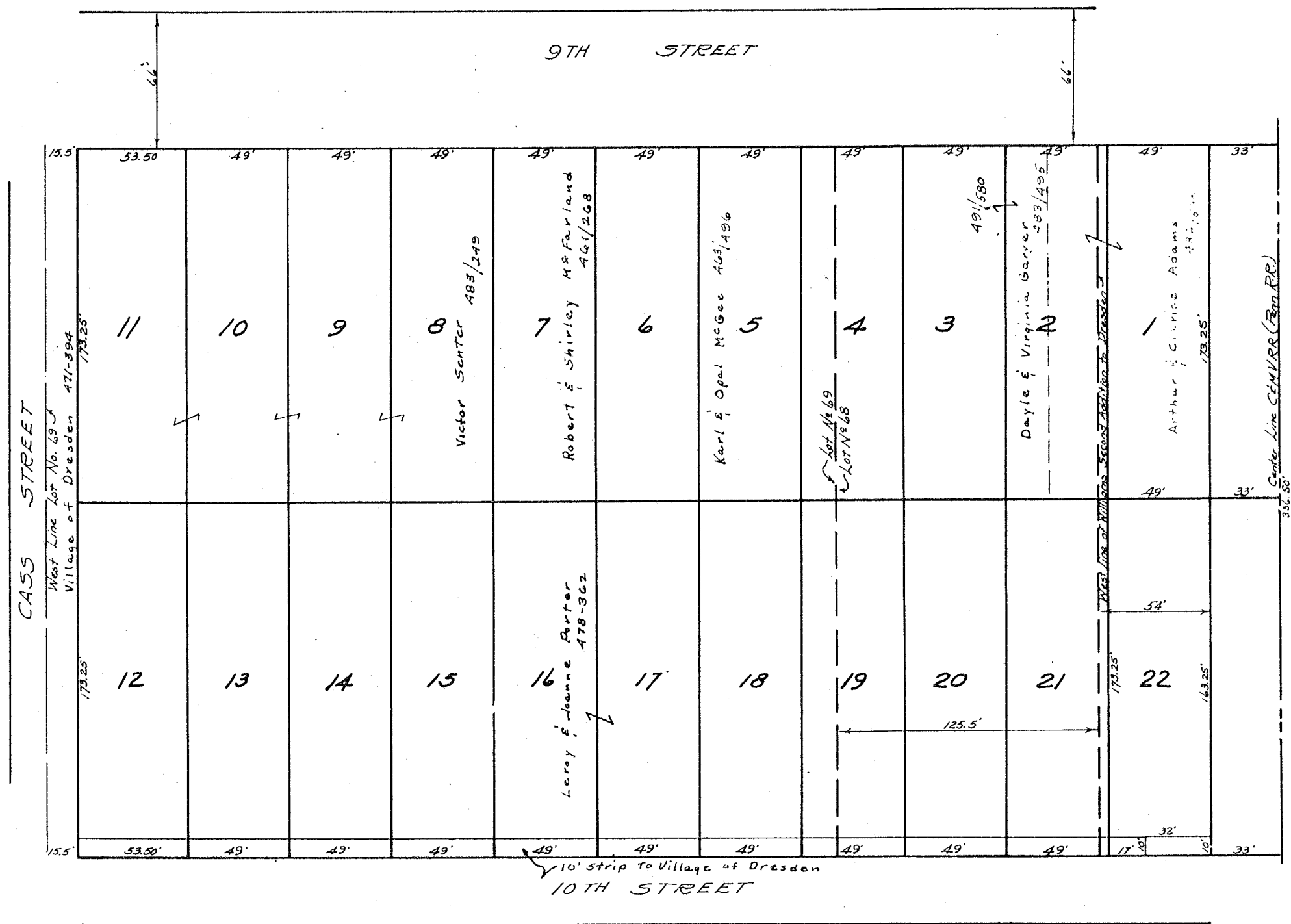


K.G. MILLERS SUB.

DRESDEN

SCALE 1"=50'

SHEET NO 26



PLAZA HOMESITES

DRESDEN

SCALE 1"=30'

