

KEY MAP

OF

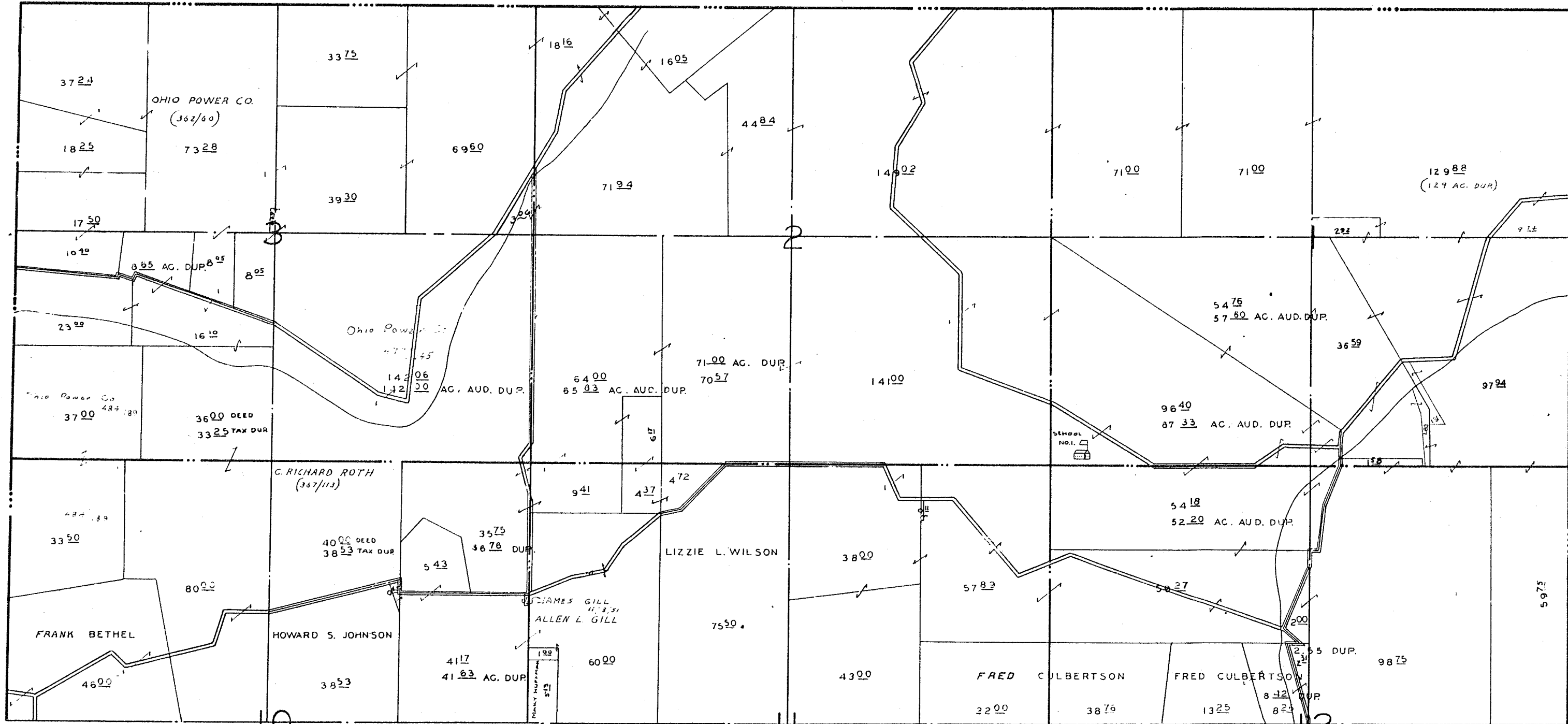
MEIGS TWP MUSK. CO. O.

SCALE 2" = 1 MILE

1950⁵⁵

R I C H I L L

T W P



N O B L E C O U N T Y

8

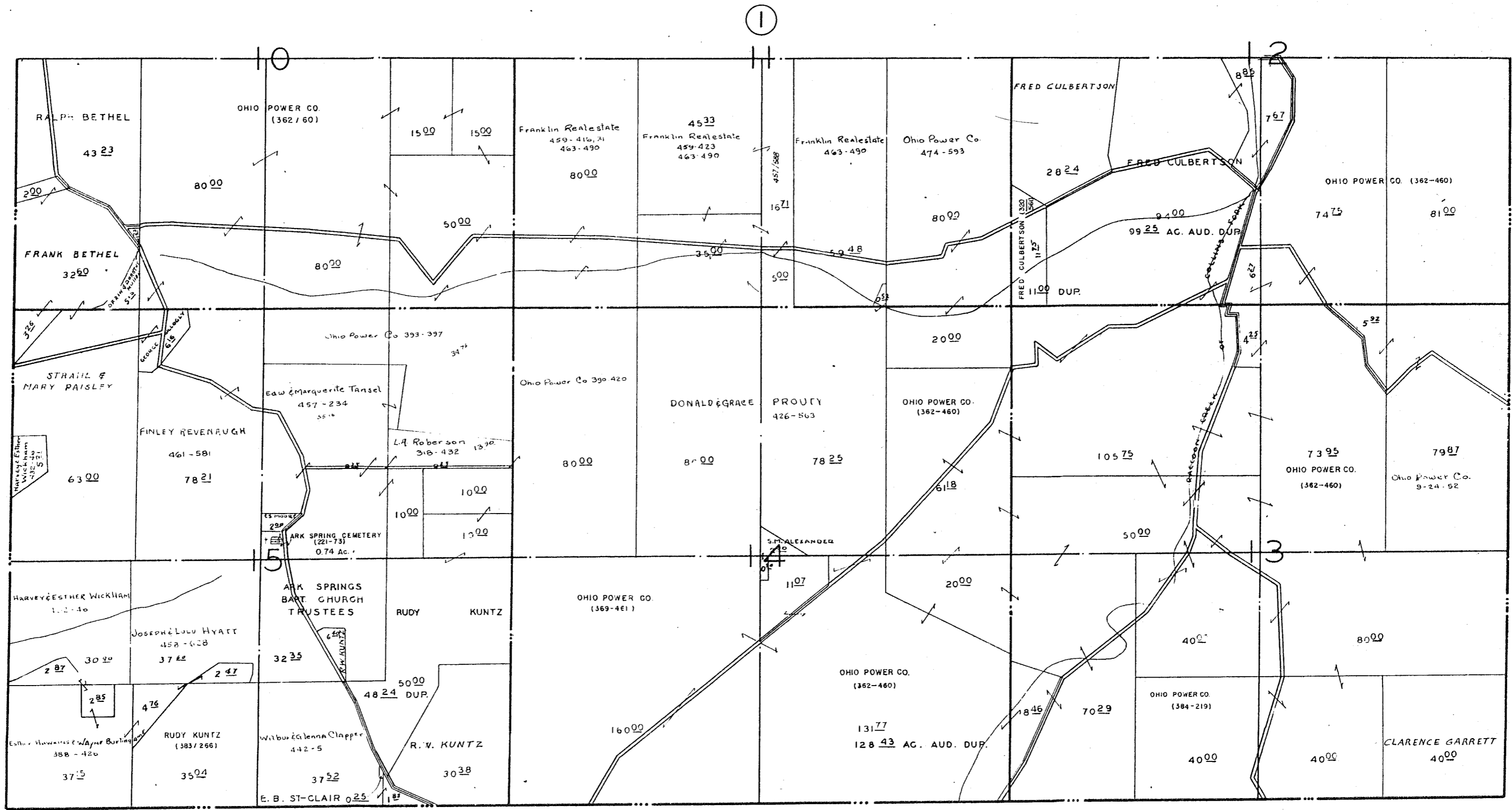
2

NORTH-HALF of QR. TR. R. 11 TWP. 12

MEIGS TWP. MUSK. CO. O.

SCALE 1" = 500'

SHEET NO. 1



7

3

SOUTH-HALF OF QR. T.P. 1 R. 11 TWP. 12

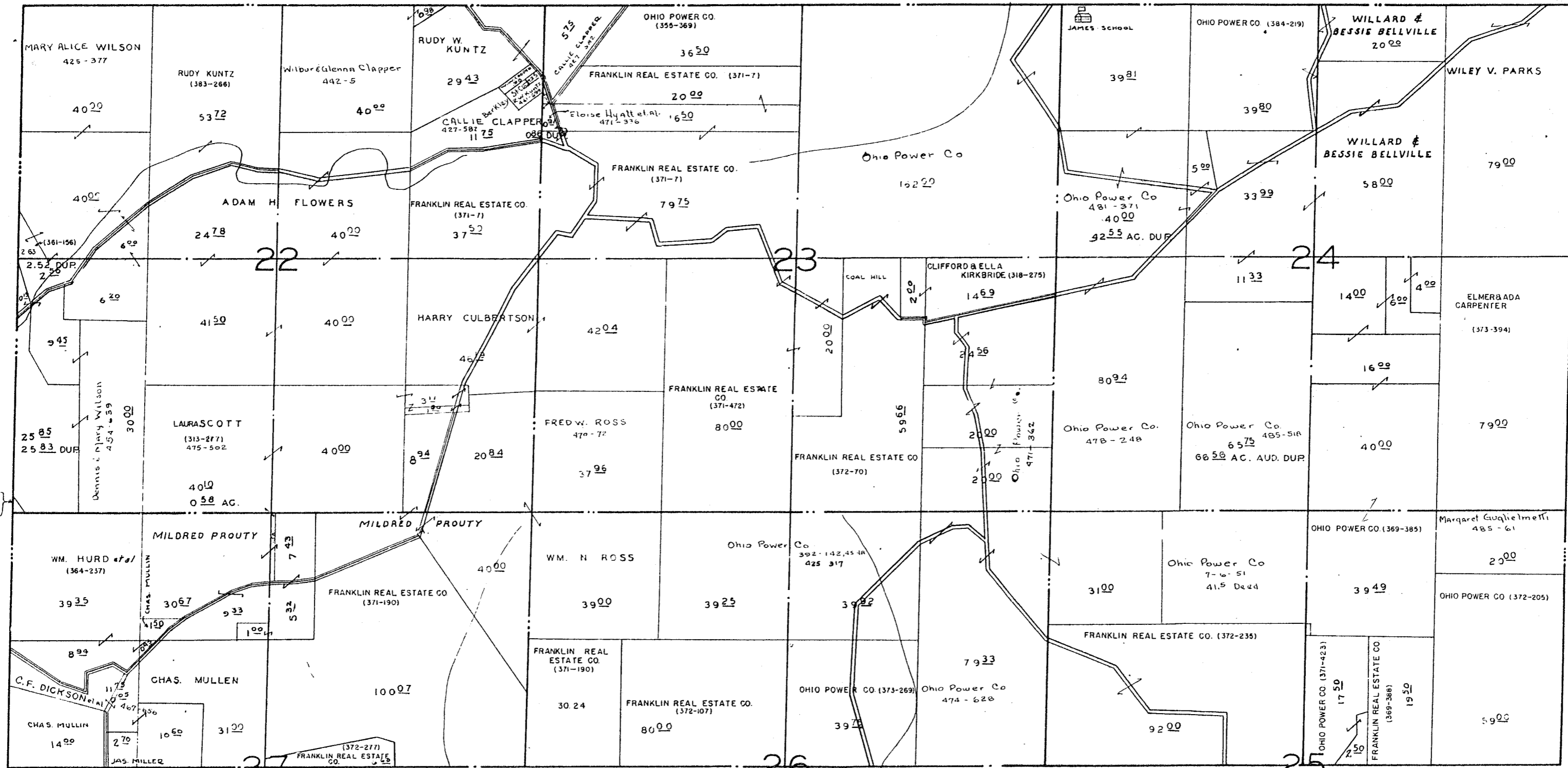
MEIGS TWP. MUSK. CO. O.

SCALE 1" = 500'

SHEET NO. 2

NOBLE COUNTY

2



6

NORLE COUNTY

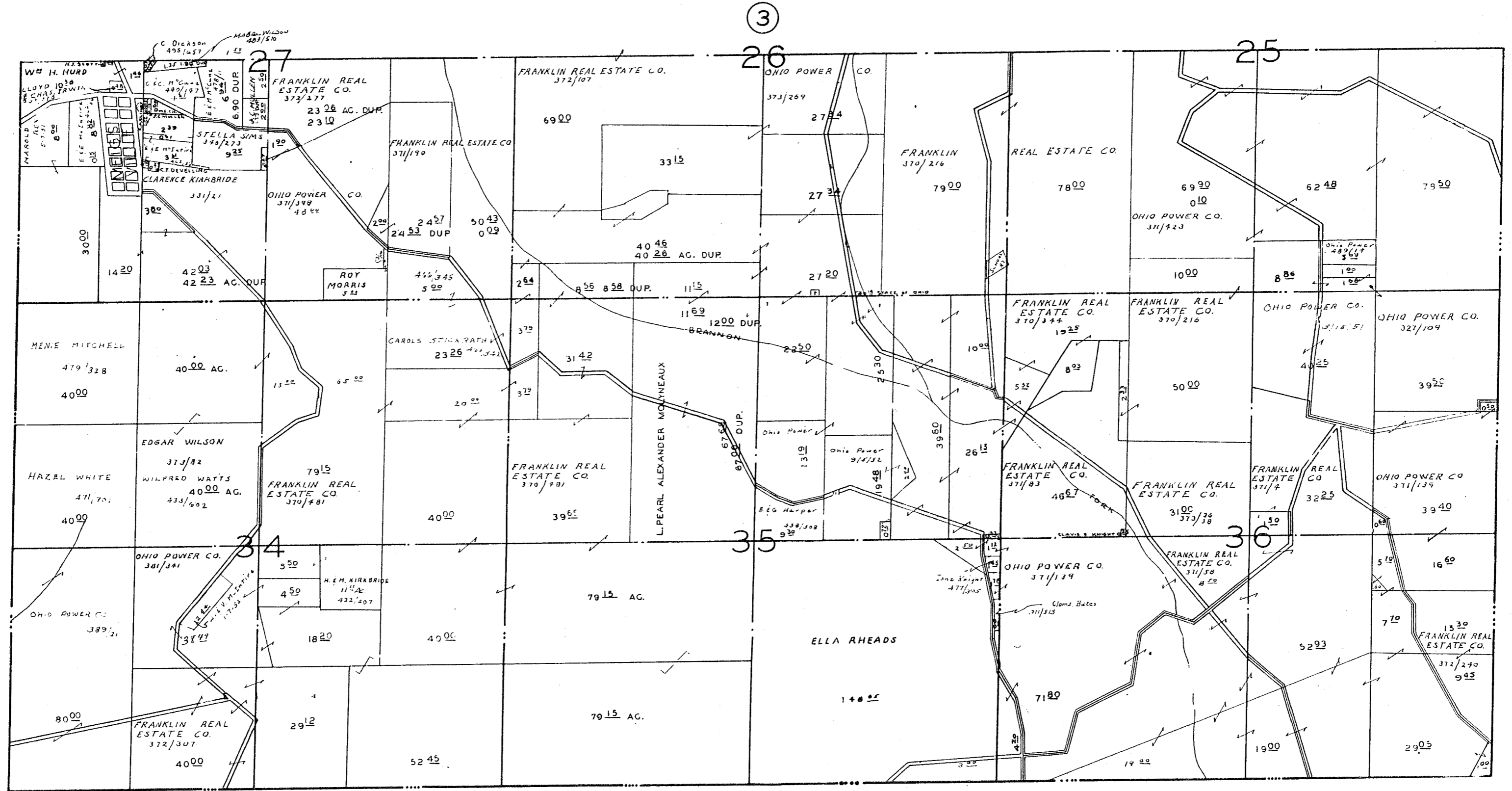
4

NORTH-HALF OF Q.R. TP. 4 R. 11 TWP. 12

MEIGS TWP MUSK. CO. O.

SCALE 1" = 500'

SHEET NO. 3



MORGAN COUNTY NOBLE COUNTY

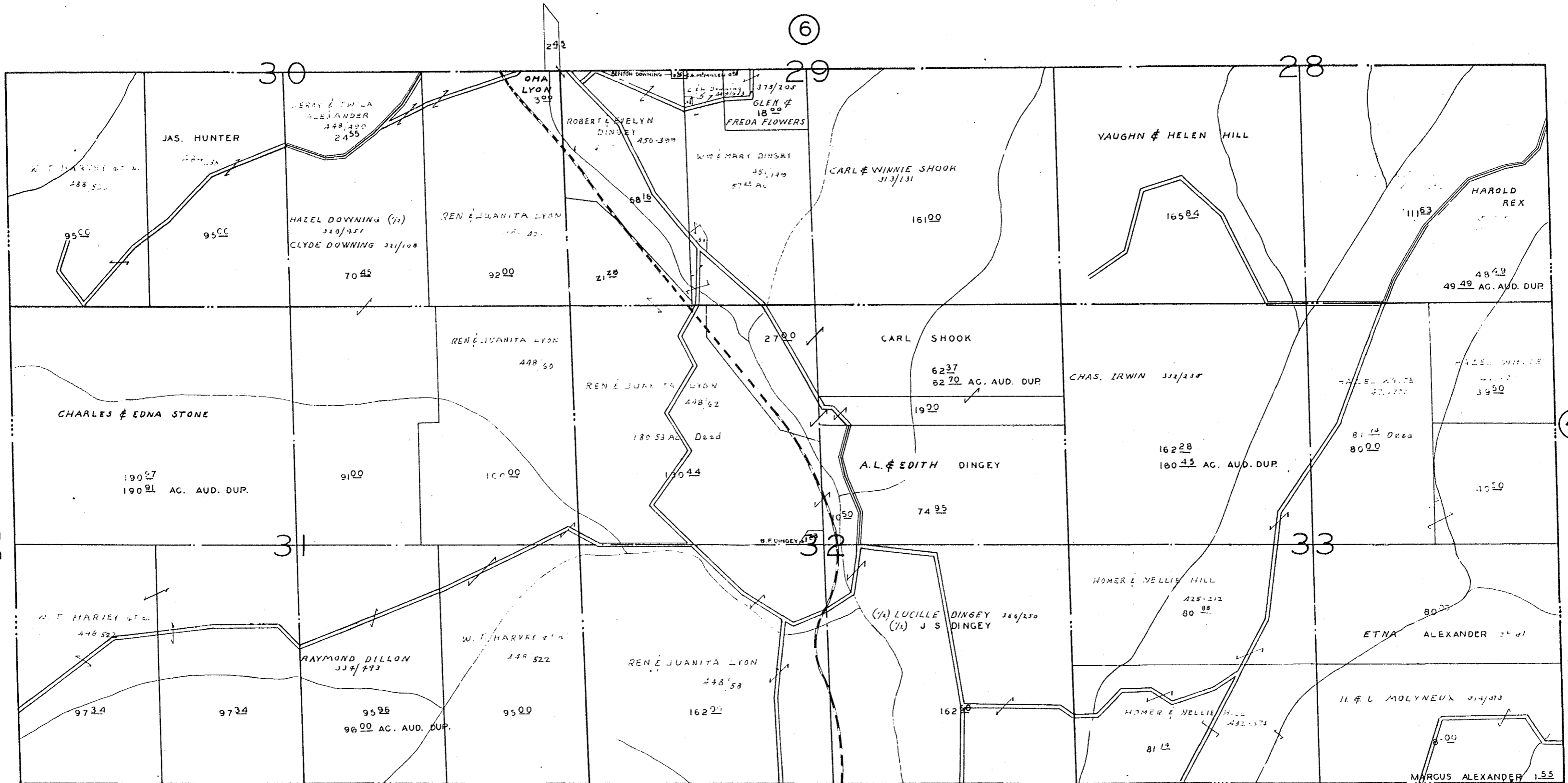
MORGAN COUNTY SOUTH-HALF of QR. TP. 4 R. 11 TWP. 12

MEIGS TWP. MUSK. CO. O.

SCALE 1" = 500'

SHEET NO. 4

BLUE ROCK TWP



MORGAN COUNTY

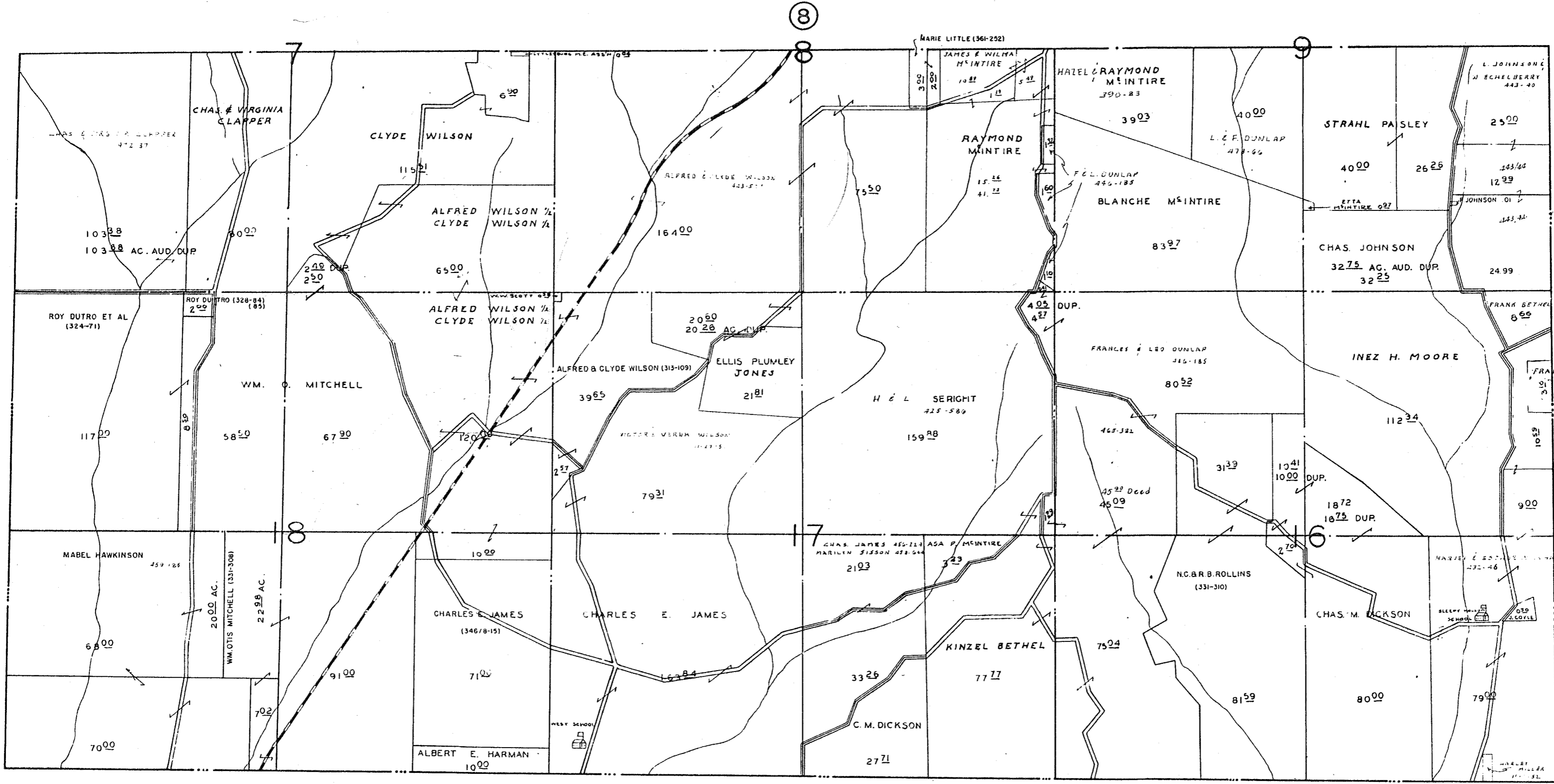
SOUTH-HALF of QR. TP. 3 R. 11 TWP. 12

MEIGS TWP. MUSK. CO. O.

SCALE 1" = 500'

SHEET NO. 5

BLUE ROCK TWP



SOUTH-HALF OF QR. TP2 R.11 TWP.12

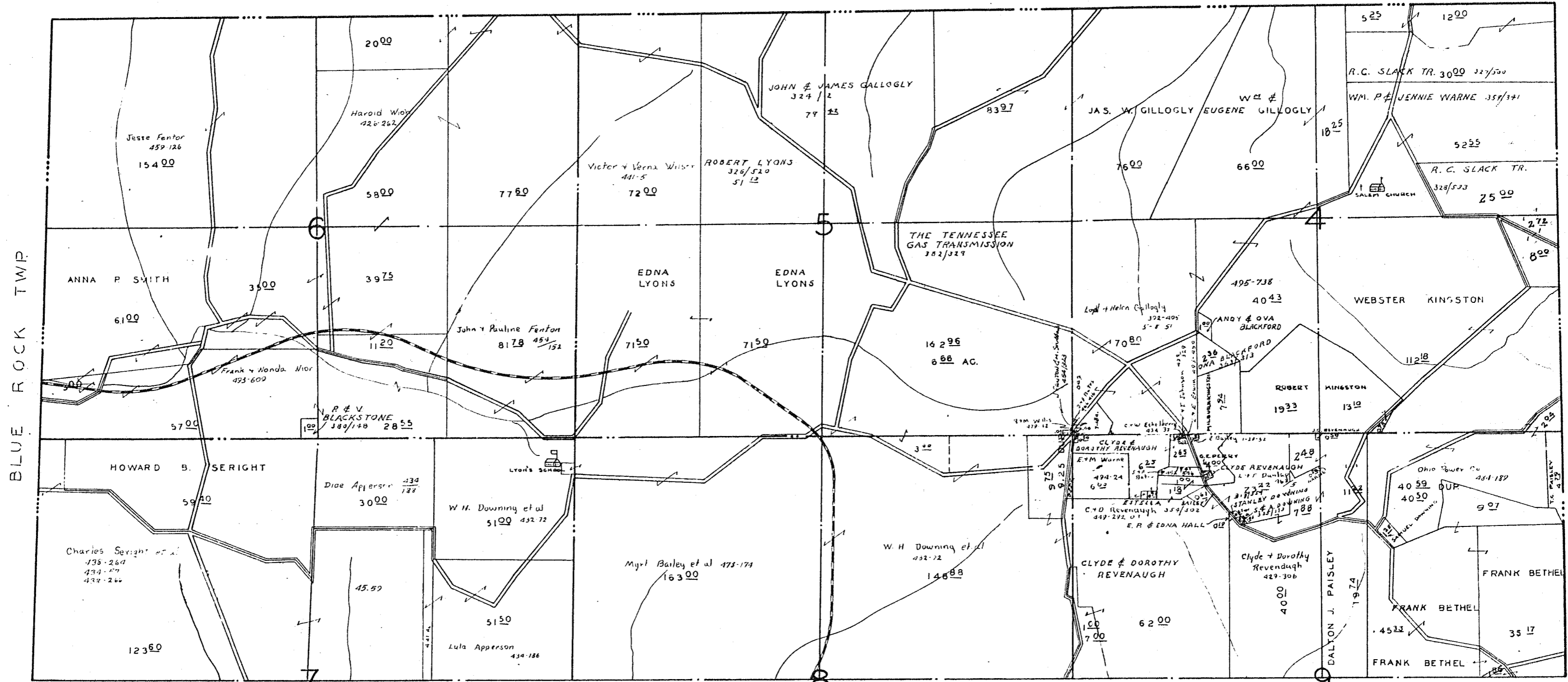
MEIGS TWP. MUSK. CO. O.

SCALE 1" = 500'

SHEET NO. 7

RICHHILL

TWP



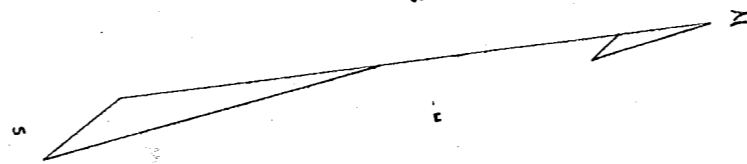
BLUE ROCK TWP.

NORTH-HALF OF QR. TP. 2. R. 11. TWP. 12

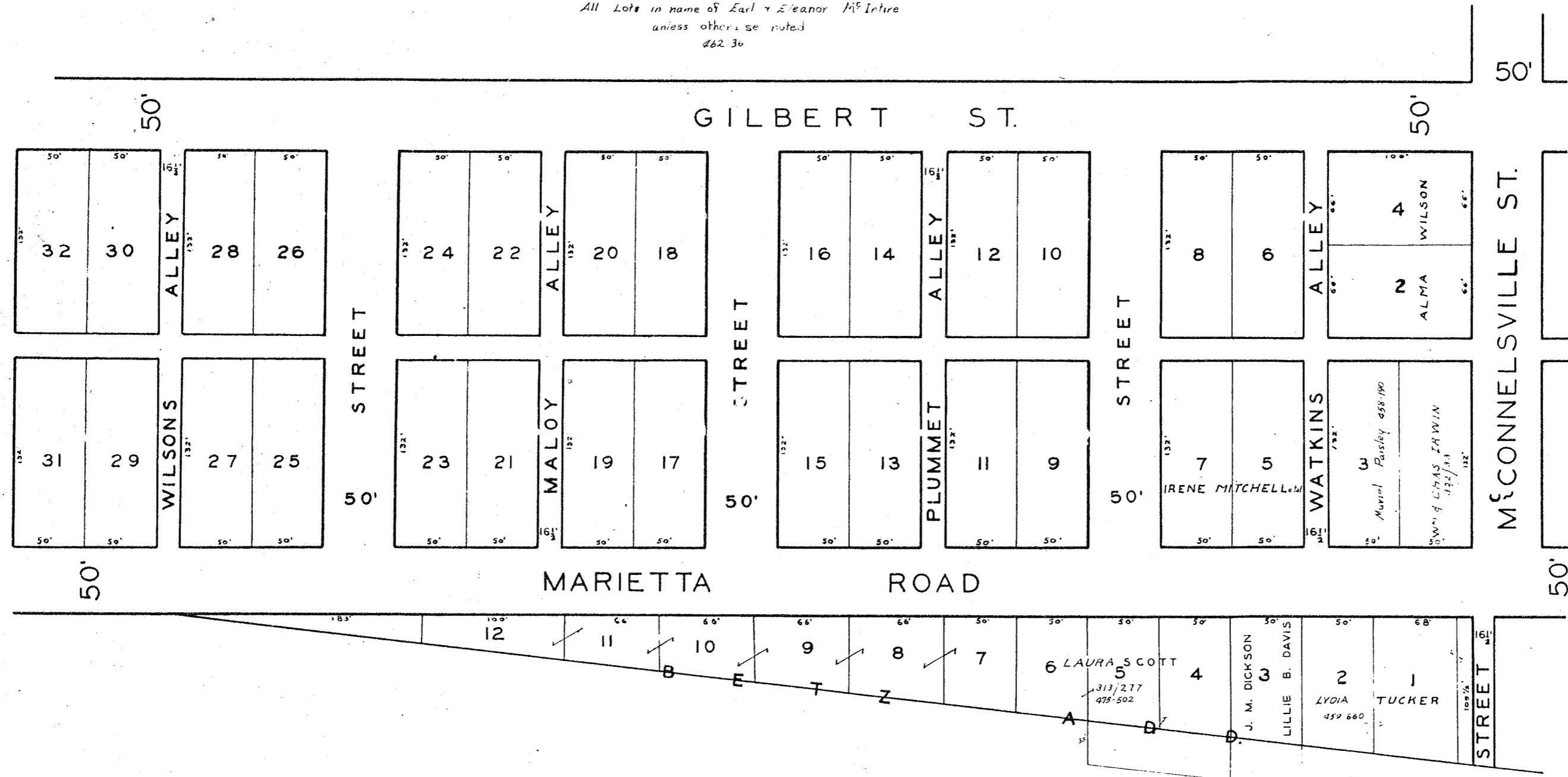
MEIGS TWP. MUSK. CO. O.

SCALE 1" = 500'

SHEET NO. 8



All Lots in name of Earl + Eleanor McIntire
unless otherwise noted
462 30



MEIGSVILLE

MEIGS TWP. MUSK. CO. O.

SCALE 1" = 40'

SHEET NO. 9