

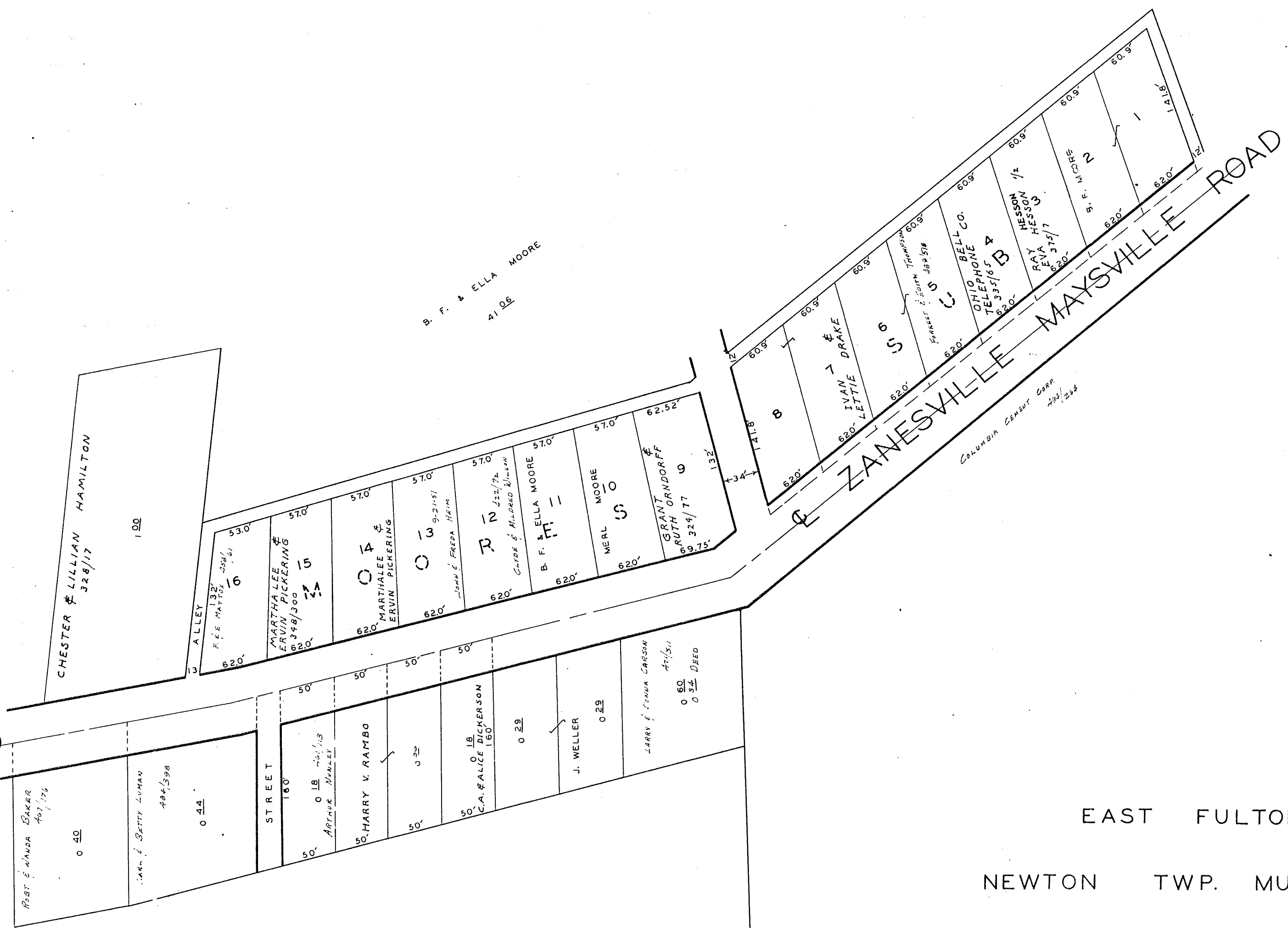
INDEX OF SUBDIVISIONS	
SUBDIVISION	SHEET NOS.
Cannon's 1st. & 2nd. & 3rd Add.	38
Hatcher's Add.	33
Hoover's Town Plat of East Fultonham	35
Hoover's 2nd. Add.	37
Kroff's Add.	34
McCoy's Sub.	35-36
Moore's Sub.	32
Hamilton Moore's Sub.	39-40-41

KEY MAP
OF
EAST FULTONHAM
NEWTON TWP. MUSK. CO. O.

SCALE 1" = 200'

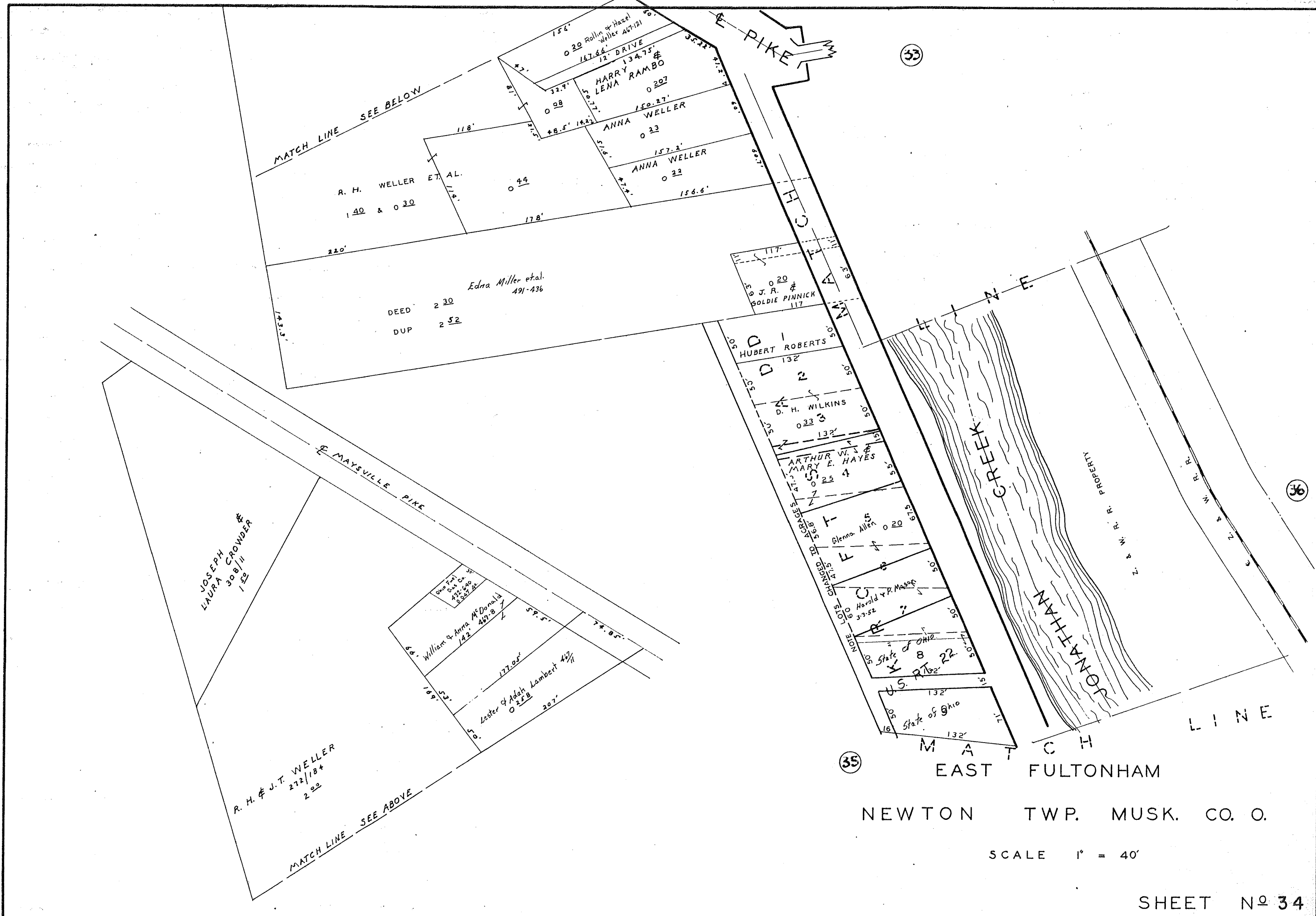
SHEET NO. 31

33



EAST FULTONHAM
 NEWTON TWP. MUSK. CO. O.

SCALE 1" = 40'



MATCH LINE SEE BELOW

R. H. WELER ET AL.
140 & 030

Edna Miller et al.
491-436

DEED 230
DUP 252

JOSEPH CROWDER &
LAURA CROWDER
308/11
152

One Part
East Co. of
421-440
302 1/2 ac.

William & Anna McDonald
142 467 1/2
4

Lester & Adah Lambert
492 1/11
0258
207'

R. H. & J. T. WELER
272/184
292

MATCH LINE SEE ABOVE

33

36

35

NEWTON TWP. MUSK. CO. O.

SCALE 1" = 40'

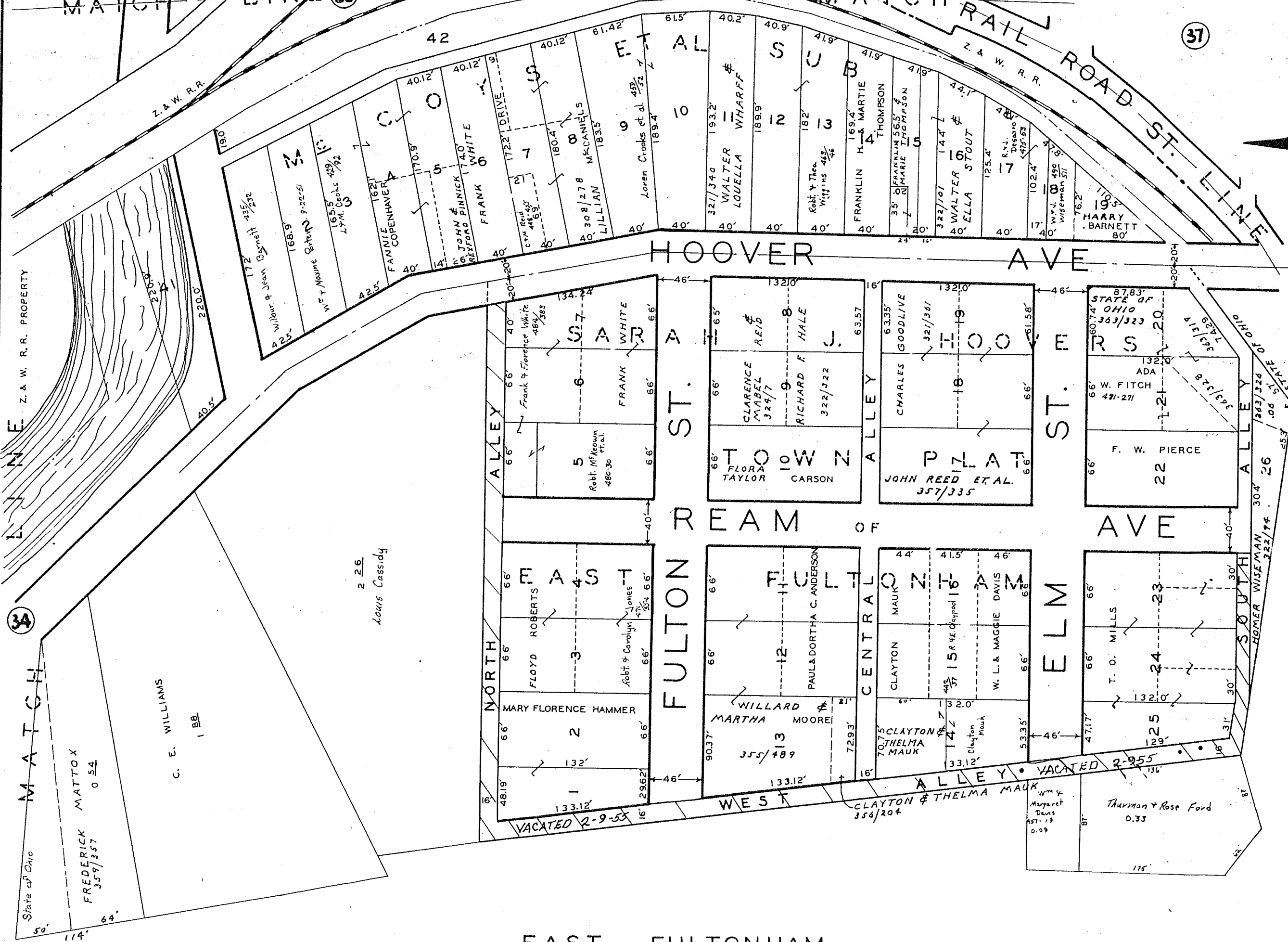
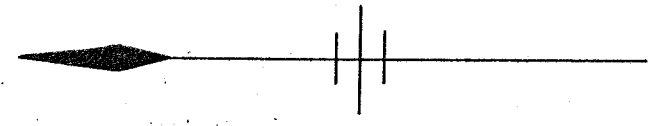
SHEET No 34

MATCH LINE 36

MATCH RAIL ROAD ST. LINE 37

Z. & W. R. R. PROPERTY

MATCH LINE 38



2 26
Louis Cassidy

EAST FULTONHAM

NEWTON TWP. MUSK. CO. O.

JONATHAN CREEK

VACATED

M C O Y ' S

V

A

C

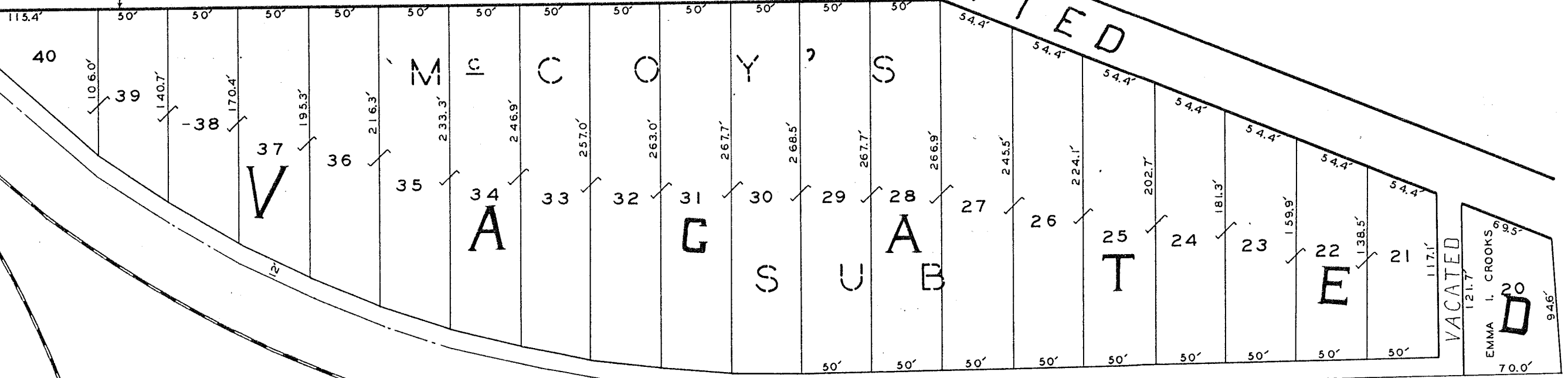
A

T

E

D

S U B



35

MATCH LINE

Z. & W. R. R. PROPERTY

Z. & W. R. R.

MATCH LINE

37

RAILROAD ST.

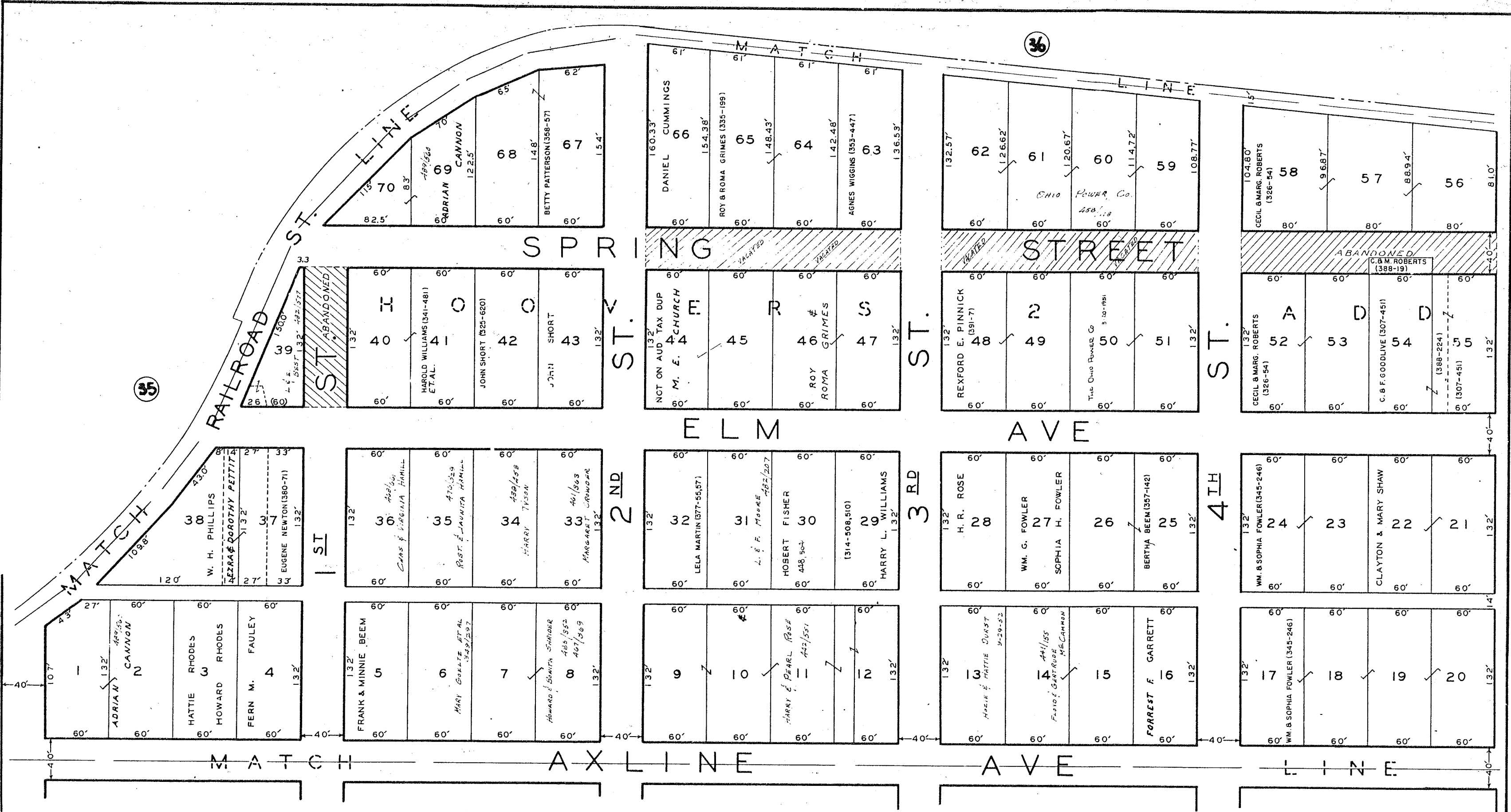
EAST FULTONHAM

NEWTON TWP. MUSK. CO. O.

VACATED BY AUTHORITY OF COUNTY AUDITOR REFER TO LETTER AT RECORDER'S OFFICE

SCALE 1" = 40'

SHEET No 36



EAST FULTONHAM

NEWTON TWP. MUSK. CO. O.

SCALE 1" = 40'

MATCH

AXLINE

37

AVE.

LINE

17 MARY RUCKER 495/459

18 RUCKER 495/459

19 CANNON

20 ELMO C. CANNON

60' 60' 60' 60'

132' 132'

21 LILLIE WISEMAN 428/521

22 EDITH SHAW

23 NEWTON TWP. BOARD OF EDUCATION

24

60' 60' 60' 60'

132' 132'

33 WILLARD & EUNICE CANNON

34 FRANCES FOUNTAIN

35 ELMER S. BEEM

36

60' 60' 60' 60'

132' 132'

7 A ROBERTS

8 H. F. THOMPSON

9 DOROTHY MITTER (368-5)

10

60' 60' 60' 60'

132' 132'

11 ALEXANDER & GORA MCLEAN (384-167)

12

13 GLEN W. MAUK

14 PITTS. PLATE GLASS

60' 60' 60' 60'

132' 132'

23 MARY RUCKER 495/459

24 ELMO C. CANNON (316-390)

25

26

27

28

60' 60' 60' 60'

132' 132'

25 NEWTON TWP. BOARD OF EDUCATION

26

27

28

60' 60' 60' 60'

132' 132'

29 BEA ANNONS

30

31

32

60' 60' 60' 60'

132' 132'

33 DOROTHY MITTER (368-5)

34 ORAN D. KNIGHT

35

36

60' 60' 60' 60'

132' 132'

37

38

39

40

60' 60' 60' 60'

132' 132'

ST.

ST.

ST.

ST.

CANNON

STREET

41 RAYMOND & AGNES PETTY 455/446

42 OPLE & MARY DOLLINGS (316-193)

43

44 JASPER IHINGER

60' 60' 60' 60'

132' 132'

45 MARY & W. DUPRE 480/182

46 HAROLD DOLLINGS (325-572)

47 TRUSTEES OF QUINCY BAPTIST CHURCH 493/198

48 ROBT. HEARING

60' 60' 60' 60'

132' 132'

49 RBT. J. HEARING

50 JOSAPHINE HEARING

51

52

60' 60' 60' 60'

132' 132'

53

54

55

56

60' 60' 60' 60'

132' 132'

1ST

2ND

3RD

4TH

BUCKEYE CREEK

38

MATCH

57 CANNONS 3RD.

58

59

60

60' 60' 60' 60'

132' 132'

61 ADD.

62

63

64

60' 60' 60' 60'

132' 132'

54

55

56

60' 60' 60' 60'

132' 132'

57

58

59

60

60' 60' 60' 60'

132' 132'

61

62

63

64

60' 60' 60' 60'

132' 132'

71

72

73

74

75

60' 60' 60' 60'

132' 132'

72

73

74

75

60' 60' 60' 60'

132' 132'

76

77

78

79

60' 60' 60' 60'

132' 132'

70

71

72

73

60' 60' 60' 60'

132' 132'

EAST FULTONHAM

NEWTON TWP. MUSK. CO. O.

SCALE 1"=40'

SHEET NO 38

5TH ST

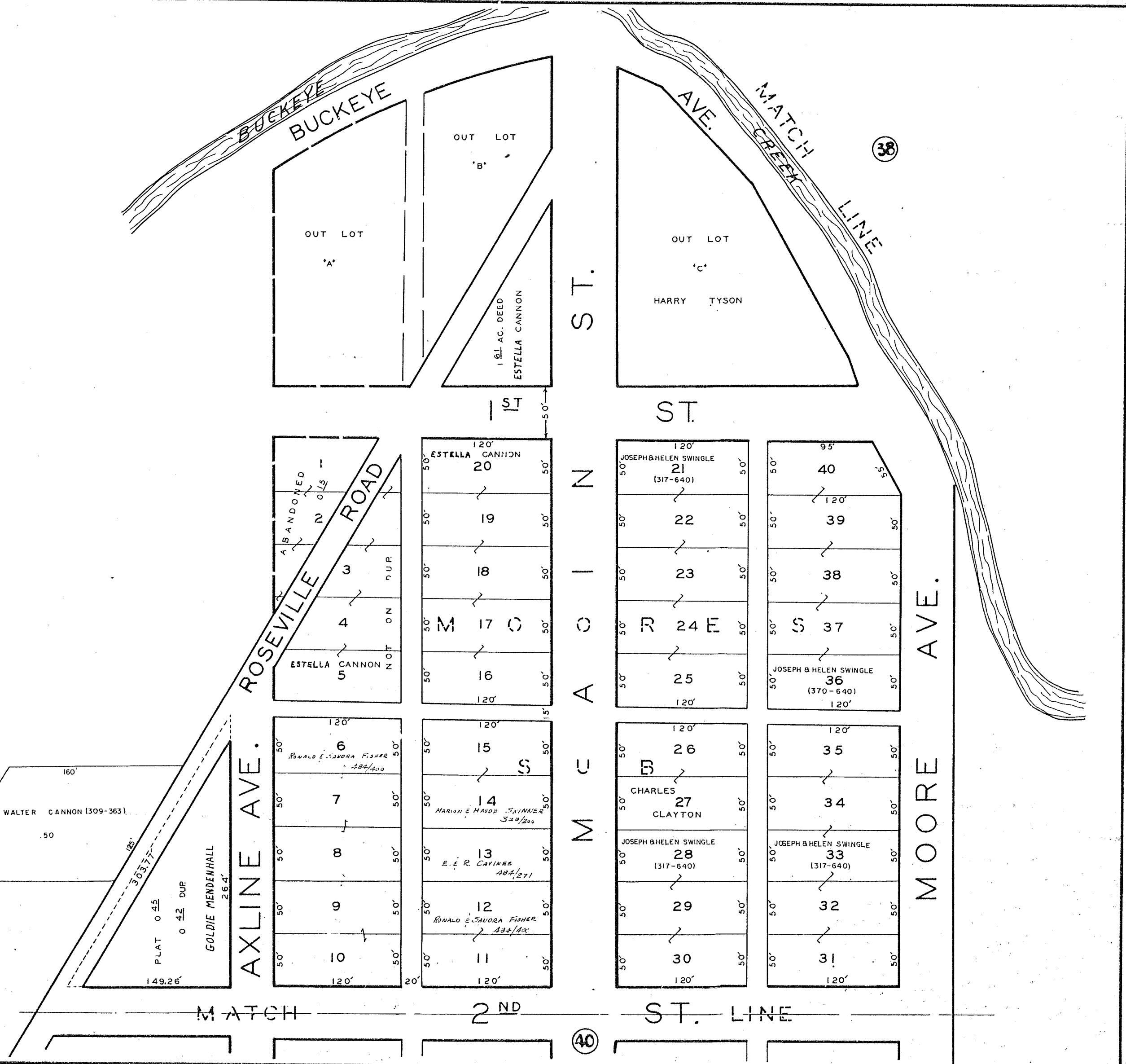
INSERTED FROM ABOVE

16" SEE INSERT BELOW

EAST FULTON HAM
 NEWTON TWP MUSK. CO. O.

SCALE 1"=40'

SHEET No 39



BUCKEYE
 BUCKEYE

AVE. MATCH
 CREEK LINE

38

OUT LOT
 'A'
 OUT LOT
 'B'
 1 1/2 AC. DEED
 ESTELLA CANNON

OUT LOT
 'C'
 HARRY TYSON

ST.

ST.

ABANDONED
 2 0/10s
 3
 4
 5
 ESTELLA CANNON

ESTELLA CANNON
 20
 19
 18
 17
 16
 15

N
 I
 O
 A
 M
 C

JOSEPH & HELEN SWINGLE
 21
 (317-640)
 22
 23
 24
 25

40
 39
 38
 37
 36
 (370-640)

WALTER CANNON (309-363)
 50
 128'
 303.77'
 PLAT 0 45
 0 42 DUP
 149.26'
 GOLDIE MENDENHALL
 26.4'

6
 RONALD E. SAVORA FISHER
 284/400
 7
 8
 9
 10

15
 14
 13
 E. E. R. CAVINES
 484/271
 12
 RONALD E. SAVORA FISHER
 484/400
 11

26
 CHARLES
 27
 CLAYTON
 28
 JOSEPH & HELEN SWINGLE
 (317-640)
 29
 30

35
 34
 33
 JOSEPH & HELEN SWINGLE
 (317-640)
 32
 31

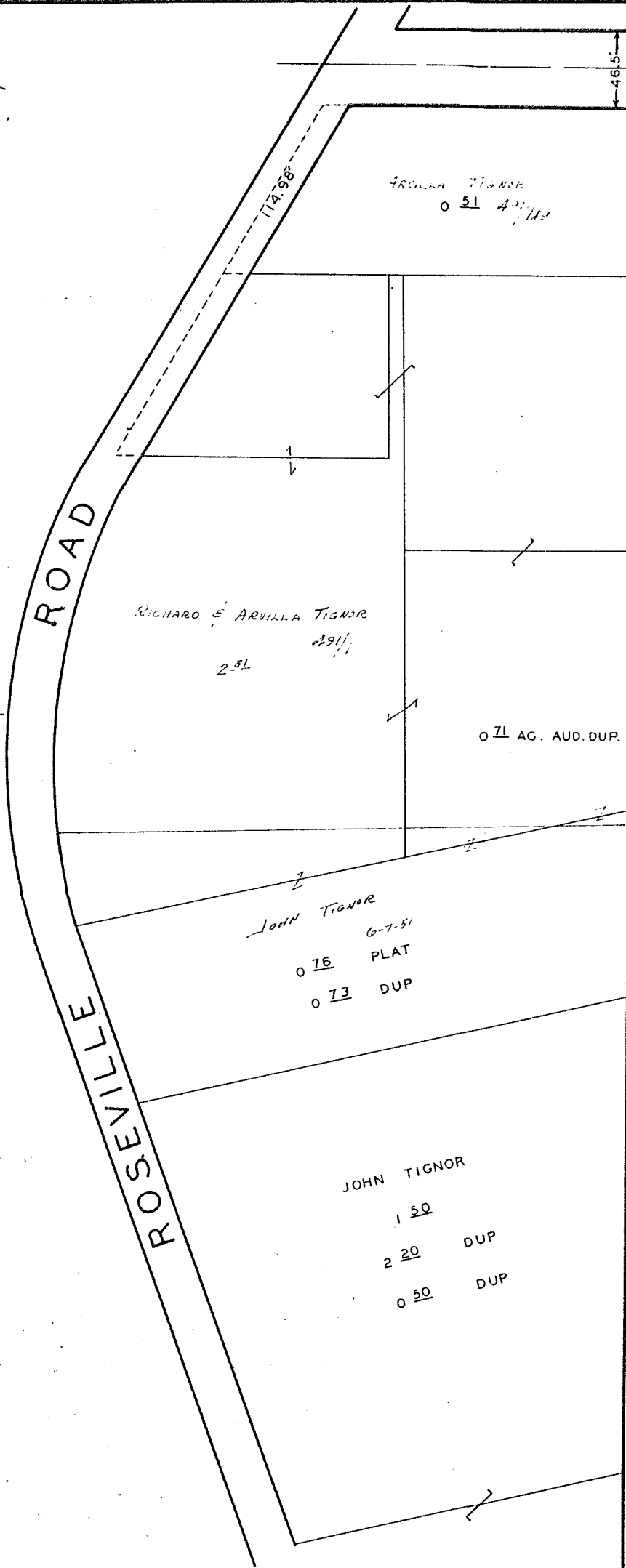
MOORE AVE.

MATCH

2ND

ST. LINE

40



AXLINE AVE

MATCH 2 ND ST. LINE		MATCH 3 RD ST. LINE	
41 RUTH G. MUNN 120' 315/553	60 120' 338/88	81 JOHN TIGNOR 120'	100 120'
42	59 MILTON GOLDA BISHOP 120'	82	99 CHAS. & NETTA JEGIL 120'
43	58 ROBT. & SHIRLEY TIGNOR 120'	83	98 120'
44	57 120'	84	97 120'
45	56 120'	85	96 120'
46	55 HARRY BARNETT 120' 319/194		
47	54 LEAN & FRANCIS HILLIS 120'		
48	53 EDWARD & BERNADINE HARTLEY 120'		
49	52 FRED & WILMA LAUNDER 120'		
50 JOHN R. TIGNOR 120'	51 CRATE BLANCHE WEBB 120'		
61	62	101 IVAN & MARY DANIELS 120'	100 IVAN & MARY DANIELS 120'
63	64	102	119
65 JOSEPH & HELEN SWINGLE 120'	66	103 DONALD & ALIDA YARGER 120'	118
76 JOSEPH & HELEN SWINGLE 120'	67	104	117
75	68	105 EDWARD H. HARTLEY 120'	116 EDWARD H. HARTLEY 120'
74	69		
73	70 IVAN & MARY DANIELS 120'		
72	71 IVAN & MARY DANIELS 120'		

MAIN ST.

EAST FULTONHAM
NEWTON TWP. MUSK. CO. O.

SCALE 1"=40'

EAST FULTONHAM
 NEWTON TWP. MUSK. CO. O.

SCALE 1" = 40'

SHEET No 41

