



P. S. FITZGERALD

2.75

CLARA & MARGERY CALDWELL (364-43)

J. T. CALDWELL

11.00

0.37

SECTION LINE

Paul A. & Laura Napier
0.47
432-418

ROBERT HINSHAW (369-433)

0.44

ADA SPAID (363-280)

0.44

9.78 DEED

9.28 DUP.

LAURA C. CALDWELL

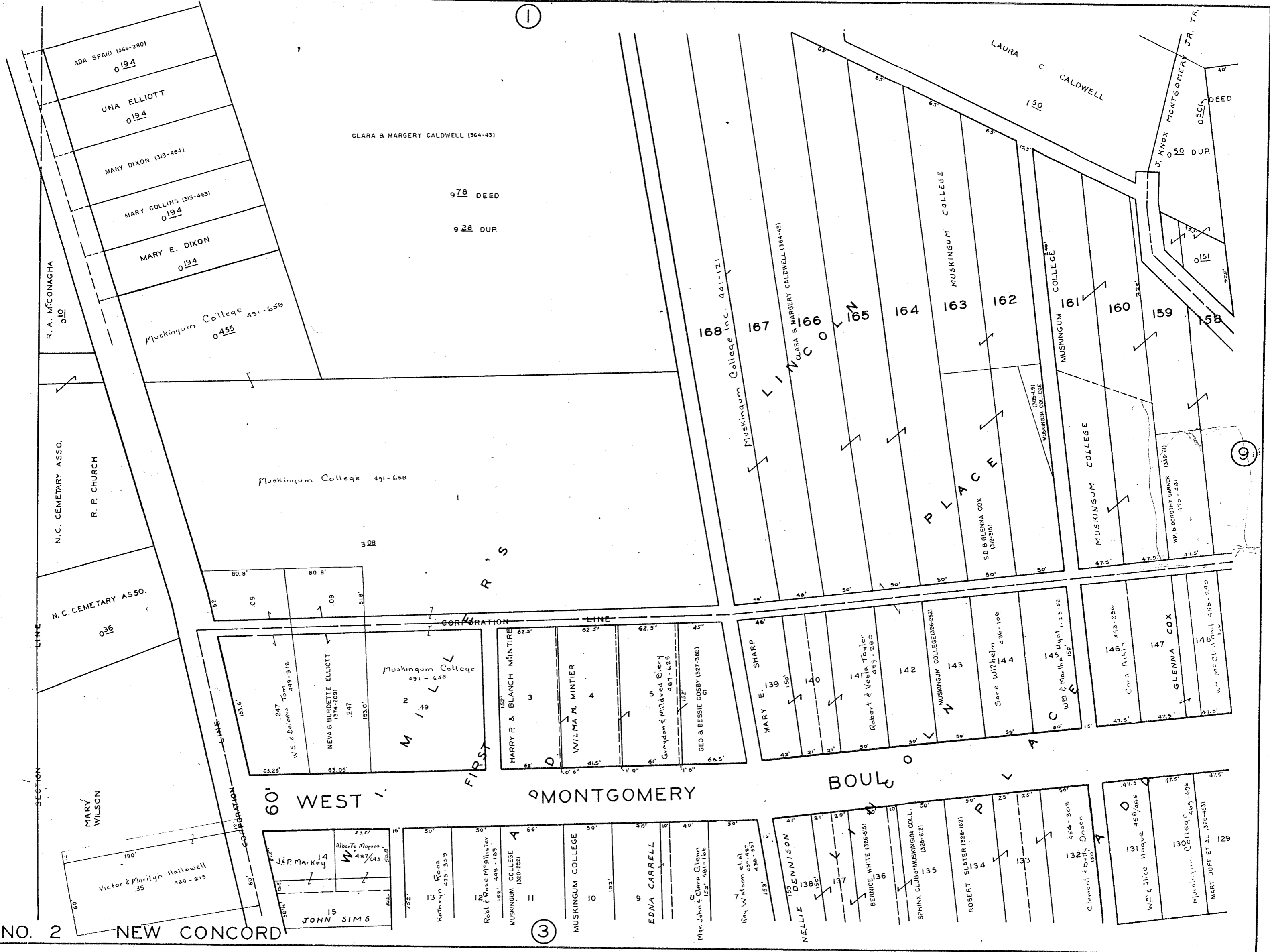
1.50

2

NEW CONCORD

SHEET NO. 1

10



CLARA B MARGERY CALDWELL (364-43)

978 DEED

928 DUP

R. A. McONAGHA
010

UNA ELLIOTT
0194

MARY DIXON (313-464)

MARY COLLINS (313-463)
0194

MARY E. DIXON
0194

Muskingum College
0455 491-658

N.C. CEMETERY ASSO.

R. P. CHURCH

N.C. CEMETERY ASSO.
036

Muskingum College 491-658

308

R S

CORPORATION LINE

FIRST

60 WEST 1

MONTGOMERY

BOUL

MARY WILSON
Victor & Marilyn Hollowell
35 489-213

14 JEP Markey
15 JOHN SIMS
16 ALBERTE MORRIS
17 KATHRYN ROSS
18 ROSE McFALLISTER
19 MUSKINGUM COLLEGE
20 MUSKINGUM COLLEGE
21 EDNA CARRELL
22 CLARA GLENN
23 RAY WATSON et al.

24 HARRY P. & BLANCH MCINTIRE
25 WILMA M. MINTIER
26 GRAYDON & MILDRED OVERY
27 GEO B BESSIE COSBY

28 MARY E. SHARP
29 ROBERT & VESTA TAYLOR
30 MUSKINGUM COLLEGE
31 SARA WITHELM
32 W. & M. HAY

33 NELLIE DENNISON
34 BERNICE WHITE
35 SPHINX CLUB of MUSKINGUM COLL.
36 ROBERT SLATER

37 CLEMENT & BETTY DORCH
38 Wm & Alice Haque
39 MUSKINGUM COLLEGE
40 MARY DUFF ET AL

41 CORN AIKIN
42 GLENNA COX
43 Wm McClelland
44 Wm & Dorothy Garner

45 S.D. & GLENN COX
46 S.D. & GLENN COX
47 Wm & Dorothy Garner
48 Wm & Dorothy Garner

49 S.D. & GLENN COX
50 S.D. & GLENN COX
51 Wm & Dorothy Garner
52 Wm & Dorothy Garner

SECTION

LINE

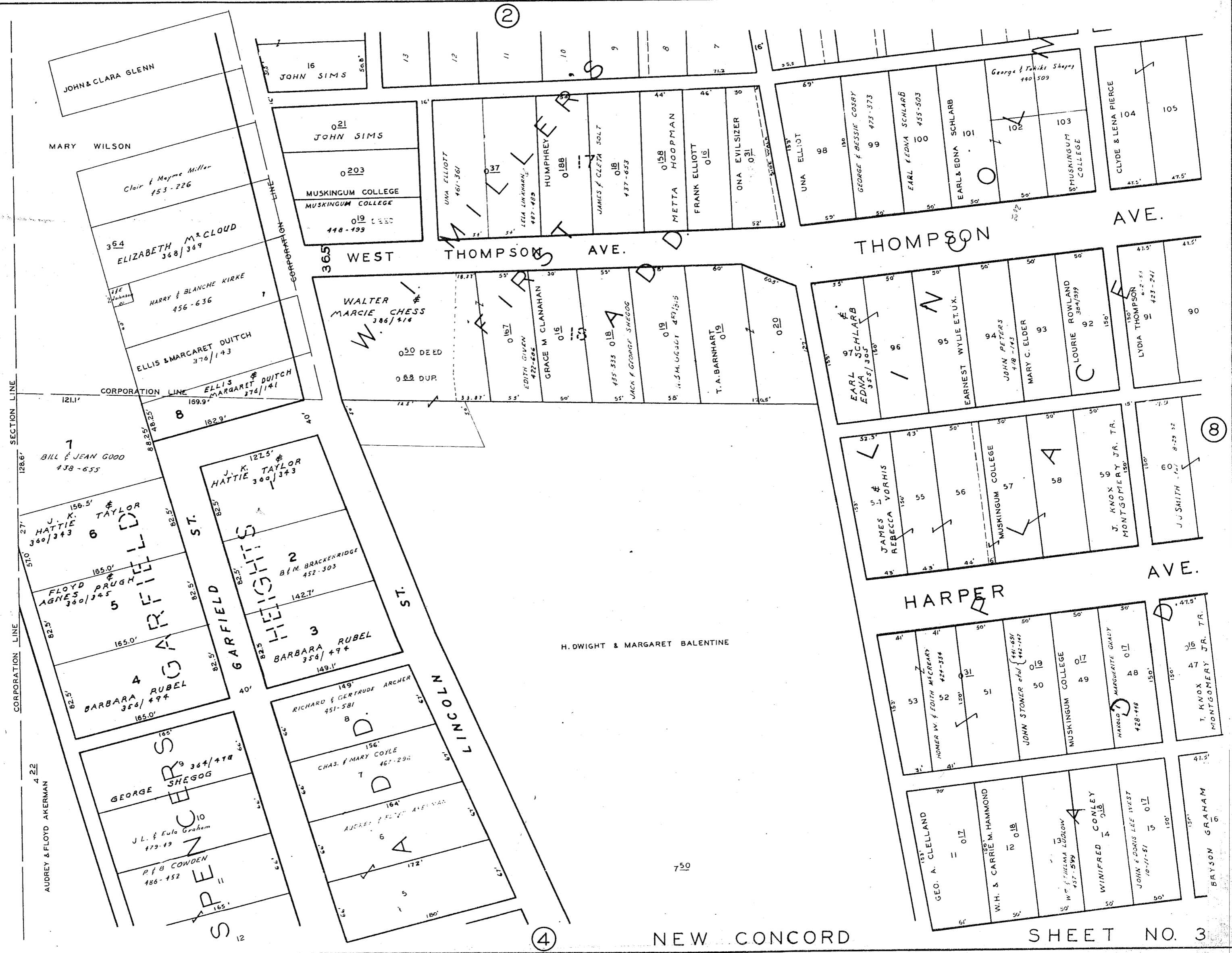
LINE

LINE

1

2

3



JOHN & CLARA GLENN

MARY WILSON

Clair & Mayme Miller
153-226

364 ELIZABETH M^{rs} CLOUD
368/369

HARRY & BLANCHE KIRKE
456-636

ELLIS & MARGARET DUTCH
376/143

ELLIS & MARGARET DUTCH
MARGARET 276/141

7 BILL & JEAN GOOD
438-655

J. K. TAYLOR
HATTIE 360/343

FLOYD PRUGH
AGNES 360/345

4 BARBARA RUBEL
356/494

GEORGE SHEGOG
364/478

J. L. & Eula Graham
479-49

P & B COWDEN
486-452

16 JOHN SIMS

021 JOHN SIMS

0203 MUSKINGUM COLLEGE
MUSKINGUM COLLEGE
019 DEED
448-199

WALTER MARCIE CHESS
386/416

050 DEED

068 DUP.

J. K. TAYLOR
HATTIE 360/343

B. M. BRACKENRIDGE
452-303

3 BARBARA RUBEL
356/494

RICHARD & GERTRUDE ARCHER
451-581

CHAS. & MARY COYLE
467-292

ARCELE & FLOYD ALEXANDER

13
12
11
10
9
8
7

UNA ELLIOTT 167-561
LELA LAMARCA 487-489
HUMPHREY 018B
JAMES & CLETA SOLT 01B 137-653
METTA HOOPMAN 015B
FRANK ELLIOTT 01B
ONA EYLSIZER 031 01B

UNA ELLIOTT 183 98
GEORGE & BESSIE COSBY 9 473-373
EARL & EDNA SCHLARB 100 455-503
EARL & EDNA SCHLARB 101
George & Takie Shroy 140 509
MUSKINGUM COLLEGE 103

CLYDE & LENA PIERCE 104 105

WALTER MARCIE CHESS
050 DEED
068 DUP.
EDITH GIVEN 422-626
GRACE M. GLANAHAN 016
JACK & GEORGE SHEGOG 435-333 01B
T. A. BARNHART 019
020

EARL & EDNA SCHLARB 97 98
EARNEST WYLIE ET. U. X. 9
JOHN PETERS 9
MARY C. ELDER 93
LOURIE ROWLAND 92 384/399

LYDIA THOMPSON 91 423-241
90

JAMES & REBECCA VORHIS 55 56
MUSKINGUM COLLEGE 57
J. KNOX MONTGOMERY JR. TR. 58
J. J. SMITH 60 8-29 32

HOMER W. & EDITH MCGREARY 424-334
JOHN STONER et al 441-651 442-142
MUSKINGUM COLLEGE 49
MARGARET GRADY 48 017
T. KNOX MONTGOMERY JR. TR. 47

GEO. A. CLELLAND 017
W. H. & CARRIE M. HAMMOND 01B
WINIFRED CONLEY 4
JOHN & DOAN LEE WEST 017
BRYSON GRAHAM 6

H. DWIGHT & MARGARET BALENTINE

H.M. SPEER

J. H. BELL
175

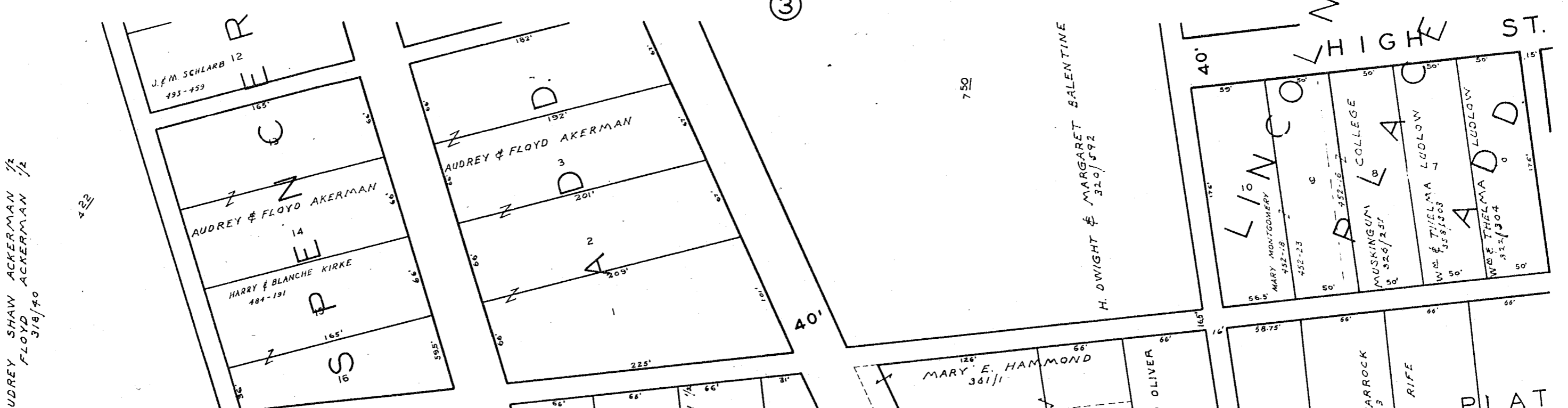
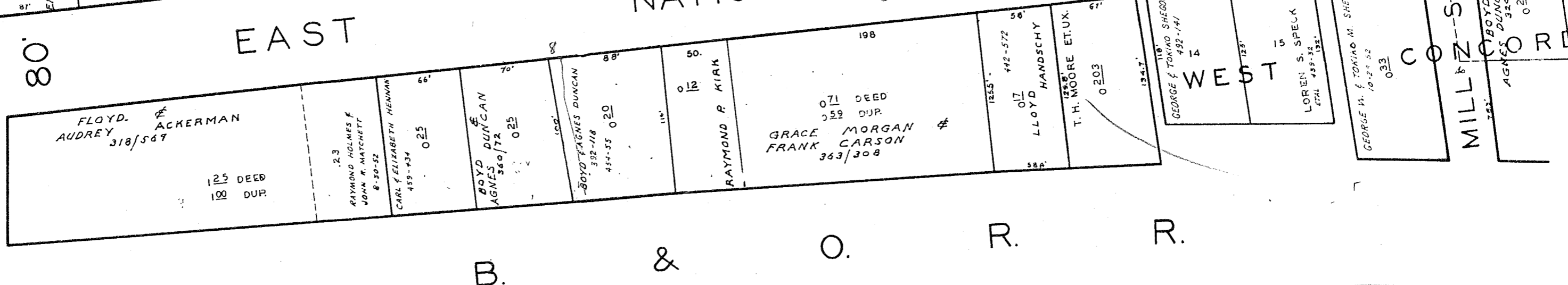
TRIXMILLS ROAD CORPORATION

LINE

SECTION

LINE

MARY M. WILSON



LINE

LINE



LINE

LINE

LINE

LINE

LINE

LINE

LINE

LINE

LINE

LINE

LINE

LINE

LINE

LINE

LINE

LINE

LINE

LINE

LINE

LINE

LINE

LINE

LINE

LINE

LINE

LINE

LINE

LINE

LINE

LINE

LINE

LINE

LINE

LINE

LINE

LINE

LINE

LINE

LINE

LINE

LINE

LINE

LINE

LINE

LINE

LINE

LINE

LINE

LINE

LINE

LINE

LINE

LINE

LINE

LINE

LINE

LINE

LINE

LINE

LINE

LINE

LINE

LINE

LINE

LINE

LINE

LINE

LINE

LINE

LINE

LINE

LINE

LINE

LINE

LINE

LINE

LINE

LINE

LINE

LINE

LINE

LINE

LINE

LINE

LINE

LINE

LINE

LINE

LINE

LINE

LINE

LINE

LINE

LINE

LINE

LINE

LINE

LINE

LINE

LINE

LINE

LINE

LINE

LINE

LINE

LINE

LINE

LINE

LINE

LINE

LINE

LINE

LINE

LINE

LINE

LINE

LINE

LINE

LINE

LINE

LINE

LINE

LINE

LINE

LINE

LINE

LINE

LINE

LINE

LINE

LINE

LINE

LINE

LINE

LINE

LINE

LINE

LINE

LINE

LINE

LINE

LINE

LINE

LINE

LINE

LINE

LINE

LINE

LINE

LINE

LINE

LINE

LINE

LINE

LINE

LINE

LINE

LINE

LINE

LINE

LINE

LINE

LINE

LINE

LINE

LINE

LINE

LINE

LINE

LINE

LINE

LINE

LINE

LINE

LINE

LINE

LINE

LINE

LINE

LINE

LINE

LINE

LINE

LINE

LINE

LINE

LINE

LINE

LINE

LINE

LINE

LINE

LINE

LINE

LINE

LINE

LINE

LINE

LINE

LINE

LINE

LINE

LINE

LINE

LINE

LINE

LINE

LINE

LINE

LINE

LINE

LINE

LINE

LINE

LINE

LINE

LINE

LINE

LINE

LINE

LINE

LINE

LINE

LINE

LINE

LINE

LINE

LINE

LINE

LINE

LINE

LINE

LINE

LINE

LINE

LINE

LINE

LINE

LINE

LINE

LINE

LINE

LINE

LINE

LINE

LINE

LINE

LINE

LINE

LINE

LINE

LINE

LINE

LINE

LINE

LINE

LINE

LINE

LINE

LINE

LINE

LINE

LINE

LINE

LINE

LINE

LINE

LINE

LINE

LINE

LINE

LINE

LINE

LINE

LINE

LINE

LINE

LINE

LINE

LINE

LINE

LINE

LINE

LINE

LINE

LINE

LINE

④

B. & O. R. R.

60'

RIXMILLS ROAD SECTION

VILLAGE OF NEW CONCORD WATER WORKS

CLARK H. GALIGHER

R S SHARROCK (367-190)
0251 DEED
110.01'
(CHAS. BEST)
022

201

419

14

CROOKED

Village of New Concord
130 258 32

ARTHUR HANCE & LESLIE LARSEN
MILL ST.

CREEK

119

970

236

A. H. GROEN

SECTION LINE

CORPORATION

129

A. H. GIVEN

1175 DEED

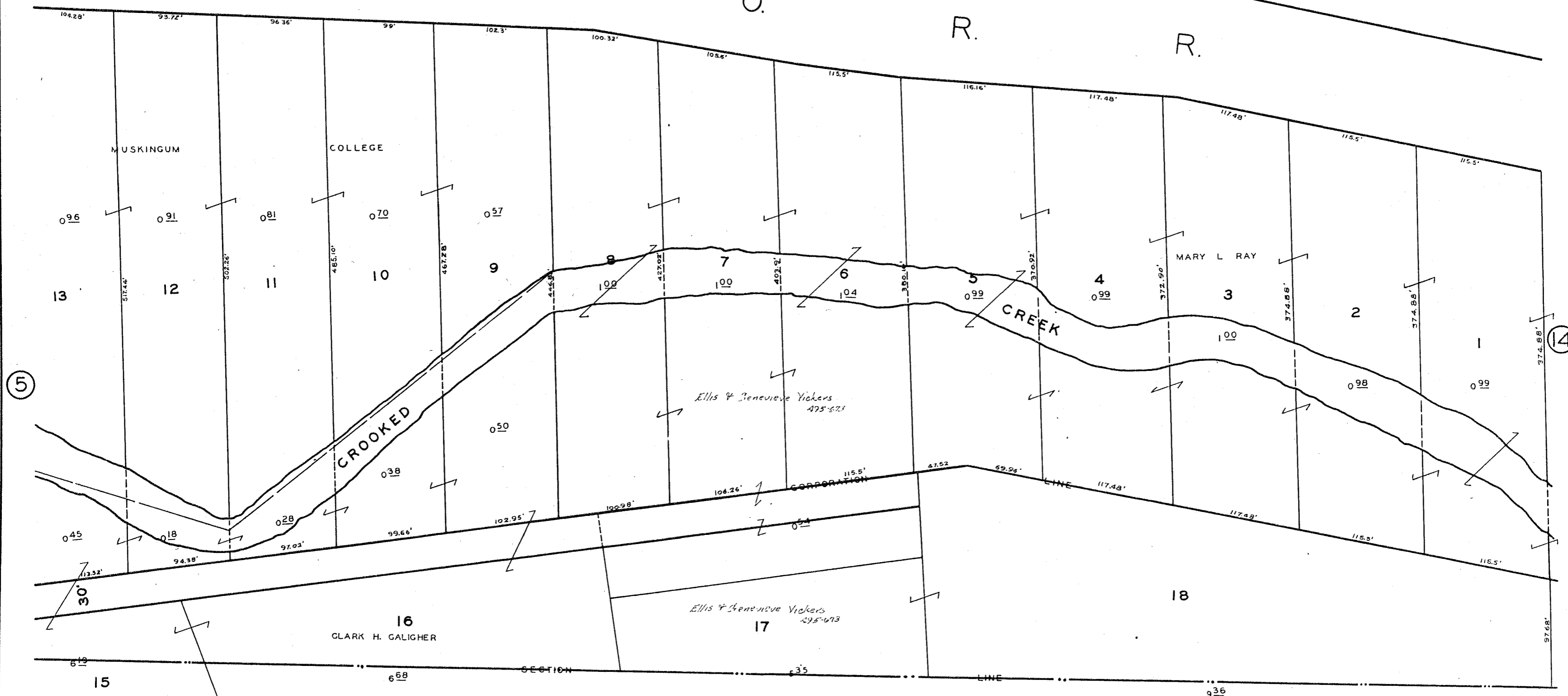
1073 DUP

201

⑥

7

B. & O. R. R.



5

14

LINCOLN
L.M. Siler
ARTHUR SARGENT
ADDS

BOARD OF EDUCATION
063

HELEN McDONALD
439-594

ADAMS
ADAMS
RALPH & ANNE MARSHALL
440-66

S.C. & J.E. SHARROCK
025

8

IDA H. BAKER
EMMA SLATER
R. H. Forsythe

DAVID
ROBERT & HARRIET MOCK
UNITED STATES OF AMERICA

COLLEGE ENTRANCE
W
N

Muskingum College
482-231

TOWN
JENNIE DICKSON
EMMA GAULT
Frank & Adeline Mazon

ADAMS
RALPH & ANNE MARSHALL
440-66

S.C. & J.E. SHARROCK
025

HOMER & FLORA GRIEST
OMA GOFF
J. HERBERT & MURIEL BAIN
CORWIN & ETHEL JONES

DAVID
ROBERT & HARRIET MOCK
UNITED STATES OF AMERICA

COLLEGE ENTRANCE
W
N

Muskingum College
482-231

NATIONAL

MAIN

STREET

PIKE

4

AUDREY SHAW
036

WEST

CONCORD

HOMER A. VERNON

OHIO VALLEY DAIRY CO.

FINDLEY'S

OMAR CAMPBELL

ISAAC & KATHRINE CURTIS

KATHRYN CURTIS

MUSKINGUM COLLEGE

VILLAGE OF NEW CONCORD

BOYD & AGNES DUNCAN

JOHN L. NOBLE
026

009

015

JOHN L. SMITH

EDNA MURREY
434-595
479-150

NEW CONCORD IOOF LODGE

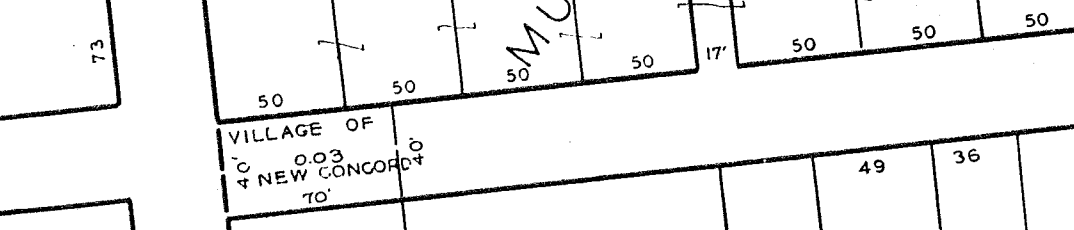
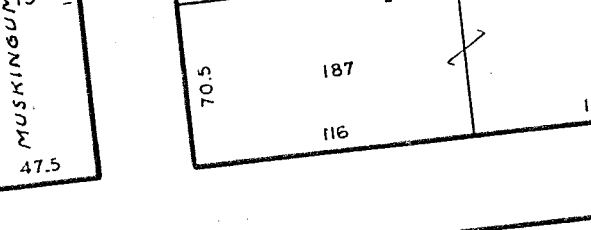
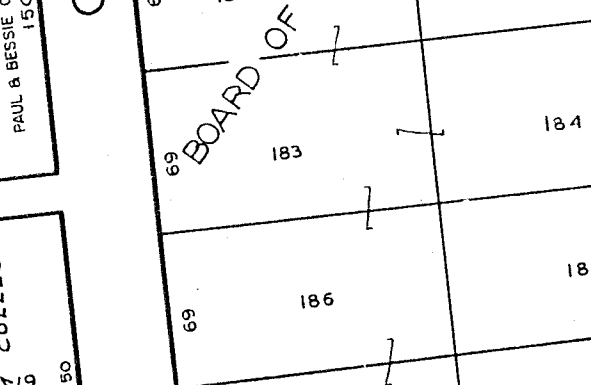
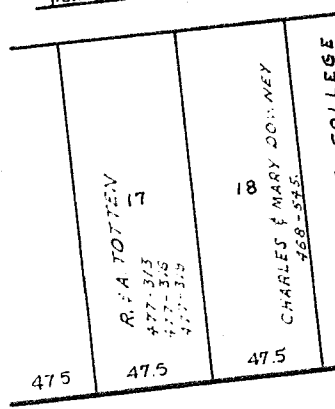
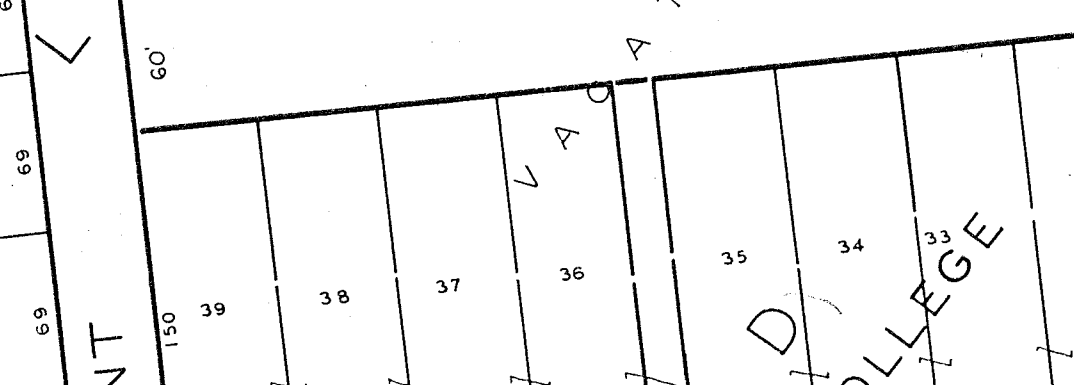
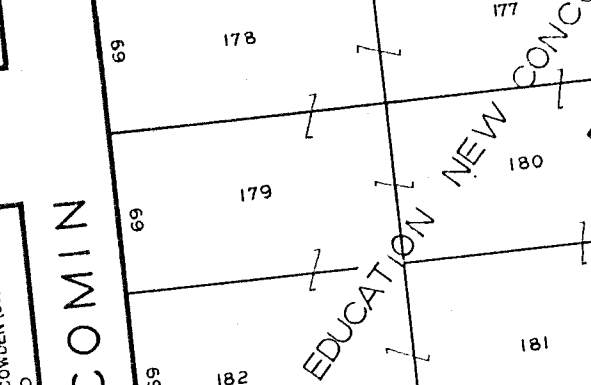
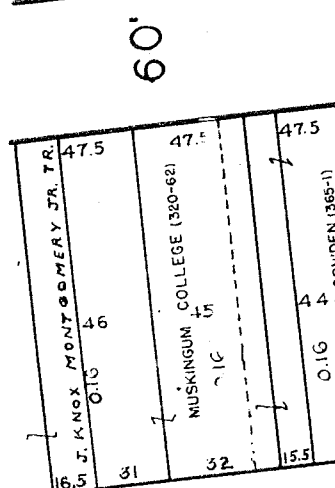
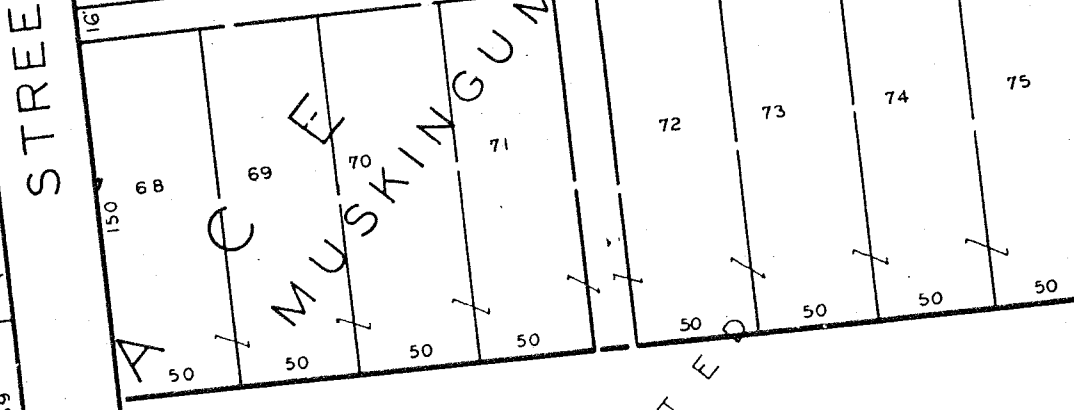
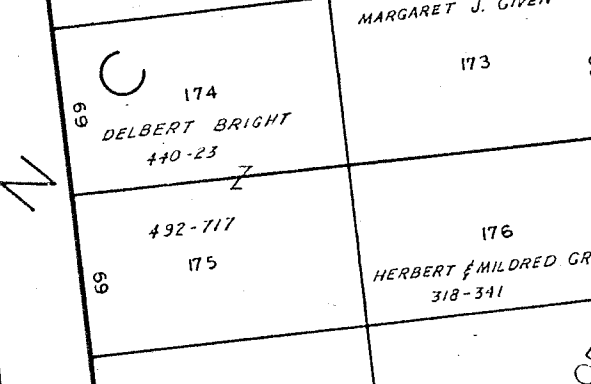
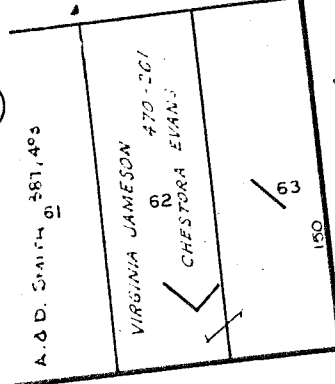
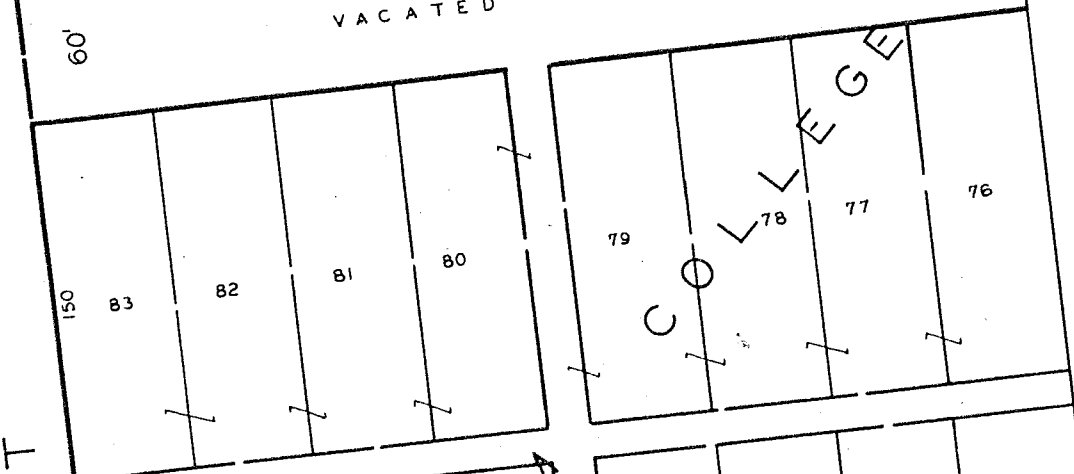
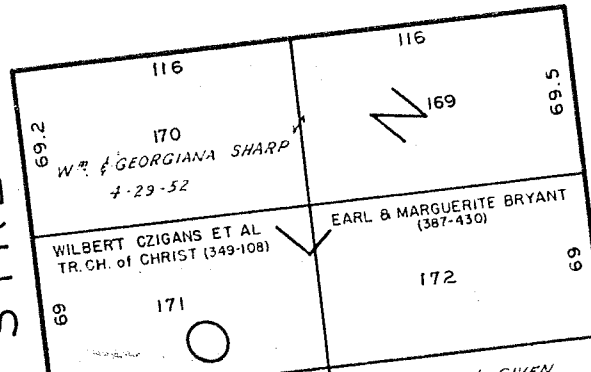
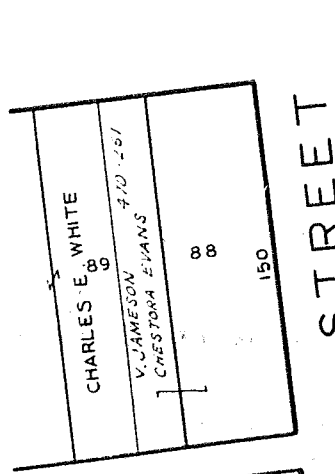
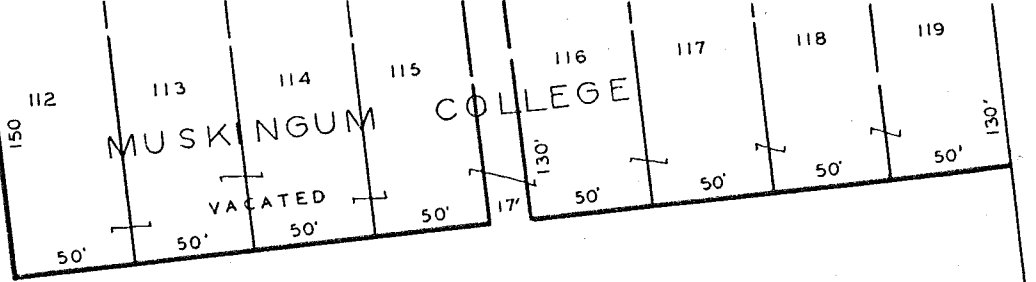
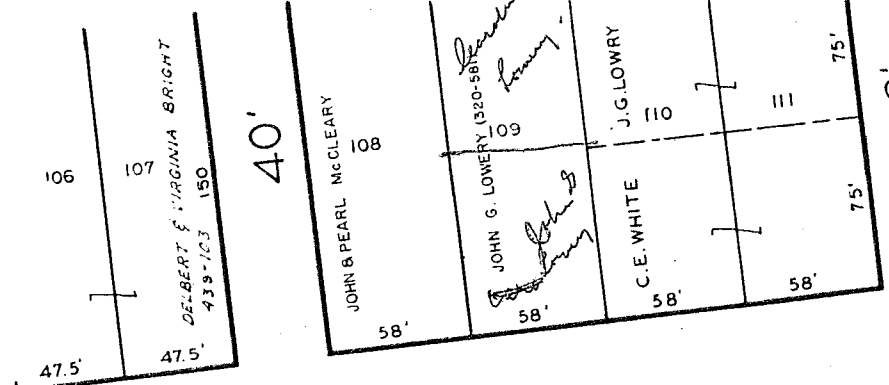
DEPOT

EDNA MURREY
479-150

B. & O. R. R.

6

9



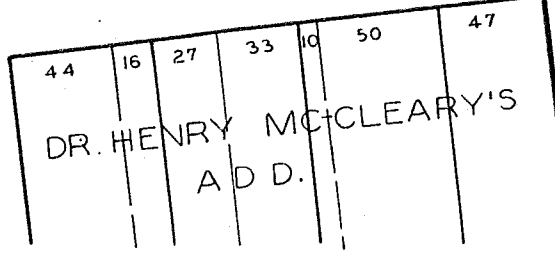
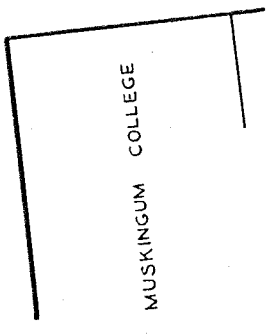
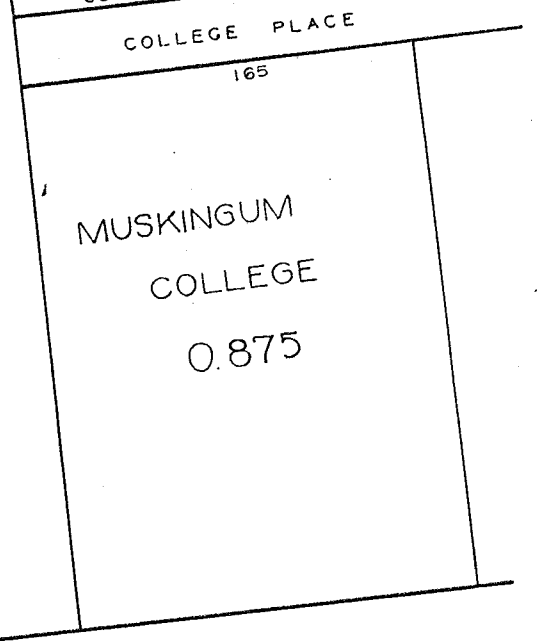
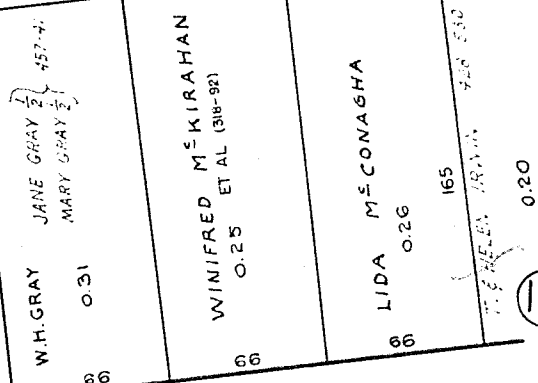
SHEET NO. 8

NEW CONCORD

7

MUSKINGUM COLLEGE 1.49

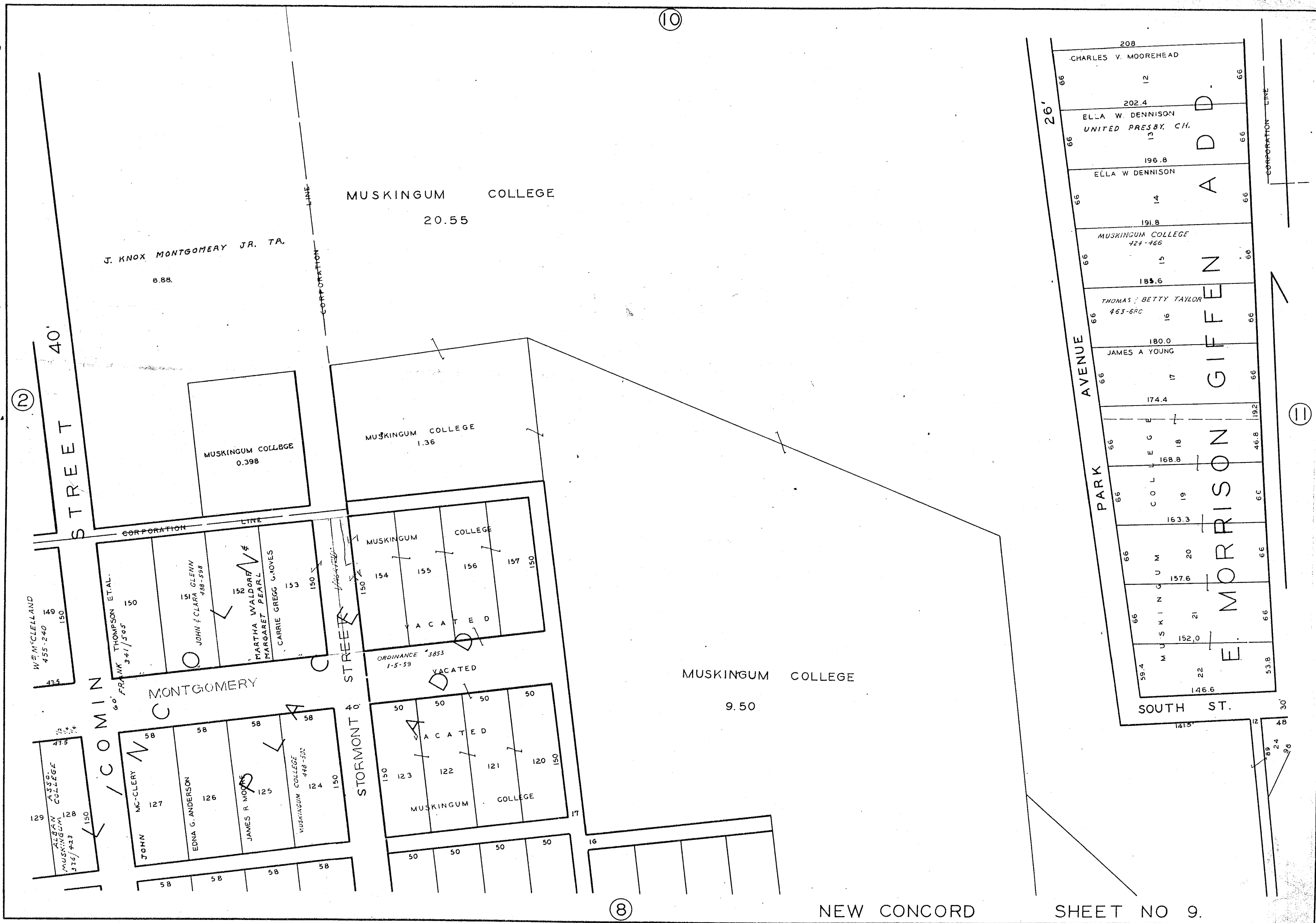
MUSKINGUM COLLEGE 9.50



DR. HENRY McCLEARY'S ADD.

12

10



J. KNOX MONTGOMERY JR. TA.
8.88.

MUSKINGUM COLLEGE
20.55

MUSKINGUM COLLEGE
0.398

MUSKINGUM COLLEGE
1.36

MUSKINGUM COLLEGE
VACATED

VACATED
ORDINANCE # 3853
1-5-59

MUSKINGUM COLLEGE
9.50

MUSKINGUM COLLEGE
VACATED

208
CHARLES V. MOOREHEAD
12
202.4
ELLA W. DENNISON
UNITED PRESBY. CH.
13
196.8
ELLA W DENNISON
14
191.8
MUSKINGUM COLLEGE
423-466
15
185.6
THOMAS & BETTY TAYLOR
463-68C
16
180.0
JAMES A YOUNG
17
174.4
18
168.8
19
163.3
20
157.6
21
152.0
22
146.6
SOUTH ST.

MORRISON

GIFFEN

ADD

STREET
40'

W. McCLELLAND
455-240
149
150
475

FRANK THOMPSON ET AL.
341/505
150
151
JOHN & CLARA GLENN
438-598
152
MARTHA WALDORF
MARGARET PEARL
CARRIE GREGG GAYNES
153
150

ALBAN ASSN. COLLEGE
MUSKINGUM
376/423
128
129
150

JOHN MC-CLERY
127
58
EDNA G. ANDERSON
126
58
JAMES R MOORE
125
58
MUSKINGUM COLLEGE
448-502
124
150
58
58
58
58

150
123
122
121
120
150
50
50
50
50
16

26'
AVENUE PARK

CORPORATION LINE

2

11

8

CORPORATION LINE

KYLE'S ADD.

JENNIE GIVEN
MARR. ALICE TAYLOR
5-29-52

140.9
O B A
C. V. CAMPBELL
471-12

W. DARLONE GRAMAM
491-832

LOUISE H. GIVEN
BAY

WELDON & MARTHA
ALKINSON
11-19-51

271.3
CORA ORR
1

265.7
2

260.1
BOARD OF FOREIGN MISSIONS
OF U. P. CHURCH
3

254.3
4

495-468

248.9
5

184-556
MUSKINGUM COLLEGE

243.3
6

237.7
7

230.4
8

477-526
MUSKINGUM COLLEGE

224.8
9

219.2
10

213.6
11

MUSKINGUM COLLEGE
O. 382

MUSKINGUM COLLEGE

20.55

HANNAH R. JOHNSON

8.88

CORPORATION LINE

PARK AVENUE

ADD

GIVEN

ORRISON

MORRISON

E

ROAD

BLOOMFIELD

JENNIE GIVEN

53.00

40'

①

⑨

ELLA W. DENNISON

10.00

CORPORATION LINE

E.M. GIFFEN

1.23

4.75

LINE

9

ROAD

40

W^m G. MOORE

23

W. MARTIN GIFFEN

2.00

1.27

11.27

CORPORATION LINE

SOUTH

ST.

BLOOMFIELD

DORA MARTIN CLARK

2.45

W^m BEST

3.67

12

NEW CONCORD

SHEET NO. 11

J. HOWARD MARTIN
2.45

W. B. BAUGHMAN
367

PATRICIA M^d DANIEL
475-413

CORPORATION

1.27

0.51
MUSKINGUM COLLEGE

MARY MOORE
et al

MUSKINGUM COLLEGE

1.26
RAY LUCILLE WEAVER
456-537

W^m & MARGIE BEST
381/298
.38

0.52
OTHO SHIPLEY

BLOOMFIELD

ROAD

CORPORATION LINE

LINE

LENA GRAHAM AIKIN
0.25 371/55

C. R. LAYTON

NORTH ALLEY

218.8

4.88 AC.
LAUREN & HELEN KING
445-541

SCOTT & FRANCES THOMAS
467-51

COLLEGE LOT

ST.

DAVID

CHARLES & FERN P. LAYTON
CHAS. R. LAYTON

PARSONS & LAYTON

S. DALE & FEAR

E. B. ANDERSON

IDA WEEKLEY

H. A. VENON ETAL
7-29-52

BAPTIST CHURCH

TRUSTEES M. E. CHURCH

NEW CONCORD METHODIST
EPISCOPAL CHURCH

LOUISE CONNER & ANNA JONES
2-11-52

HIGH

STREET

CHERRY

PRESBYTERIAN CHURCH LOT

ROBERT & JEAN BURKHOLDER
475-369

COLLEGE OR PUBLIC GROUND

IDA M. ROY
481-316

PUBLIC GROUND

U. P. CHURCH

MARTHA MONROE
LOUELLA COLE
371/132

KENNETH HIGGINS & EARSEL
389/476

LULU HARPER
329/191-193

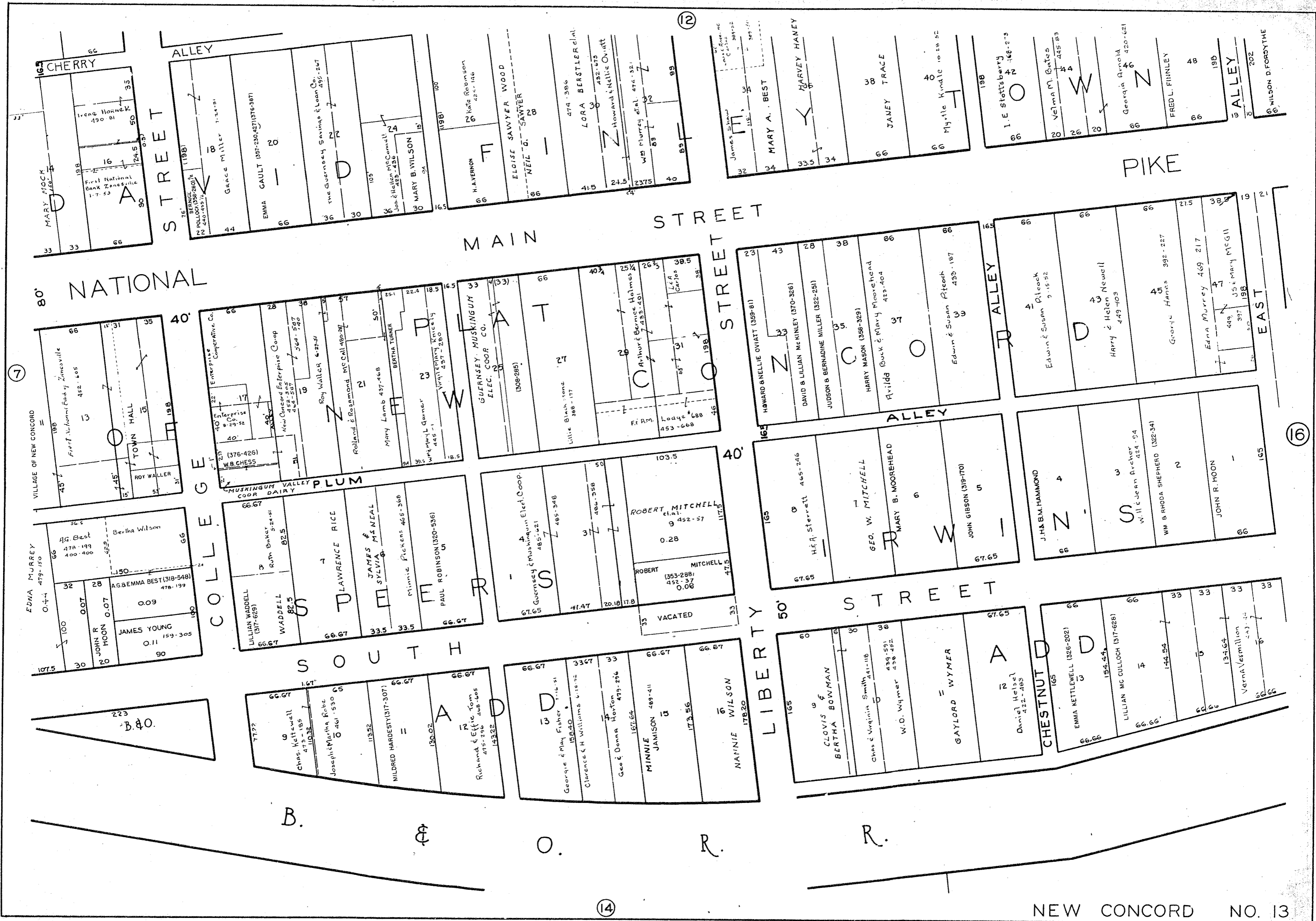
LOUISE JOHNSON
456-570

W. E. DUFF
433-396

MARY E. CALDWELL

L. G. BUCHANAN
433-105

MAY BLACKWOOD
423/512



167 CHERRY ALLEY
 MARY MOCK
 Irene Horne
 First National Bank
 1-7-63

STREET
 Grace Miller
 EMMA GAULT
 the Guernsey Savings & Loan Co.
 MARY B. WILSON
 H.A. VERNON
 ELOISE SAWYER WOOD
 NEIL G. SAWYER
 LORA BERSTLER et al.
 HOWARD & Nellie Oviatt
 Wm Murray et al.
 KATE ROBINSON
 42-1-116

PIKE
 MARY A. BEST
 HARVEY HANEY
 JANEY TRACE
 Myrtle Kindle
 I. E. Stottsberry
 Velma M. Bates
 Georgia Arnold
 FRED L. FINNLEY
 ALLEY
 WILSON D. FORDYTHE

80 NATIONAL
 VILLAGE OF NEW CONCORD
 First National Bank of Zanesville
 452-605
 TOWN HALL
 ROY WALLER

MAIN STREET
 Enterprise Cooperative Co.
 New Concord Enterprise Corp.
 Roy Waller
 Roland & Rosemond McCall
 MARY LAMB
 BERTHA TURNER
 Wm Murray
 GUERNSEY MUSKINGUM ELEC. COOP. CO.
 Little Black Stone
 Arthur & Bernice Holmes
 L. C. Carbo

STREET
 HOWARD & NELLIE OVIATT
 DAVID & LILLIAN MCKINLEY
 JUDSON & BERNADINE MILLER
 HARRY MASON
 Hilda Buck & Mary Moorehead
 Edwin & Susan Pitcock
 EDWIN & SUSAN PITCOCK
 HARRY & HELEN NEWELL
 GEORGE HANES
 EDNA MURREY
 J. S. & MARY MCGILL
 EAST

EDNA MURRAY
 AG. BEST
 JOHN R. HOON
 JAMES YOUNG
 AG. EMMA BEST

COLLEGE STREET
 MUSKINGUM VALLEY COOP. DAIRY
 LILLIAN WADDELL
 WADDELL
 LAWRENCE RICE
 JAMES & SYLVIA MENEAL
 MIMMIE PICKENS
 PAUL ROBINSON
 ROBERT MITCHELL
 ROBERT MITCHELL
 VACATED

ALLEY
 HEA STERRETT
 GEO. W. MITCHELL
 MARY B. MOOREHEAD
 JOHN GIBSON
 J. H. B. HAMMOND
 W. H. JEAN ARCHER
 WM. B. RHODA SHEPHERD
 JOHN R. HOON

SOUTH PLUM
 CHAS. KETTERWELL
 Josephina Robt
 MILDRED HARDESTY
 RICHARD & EFFIE TOM
 GEORGE & MAY FISHER
 CLARENCE & H. WILLIAMS
 Geo. & DORIS HORTON
 MINNIE JAMISON
 NANNIE WILSON

LIBERTY STREET
 CLOVIS & BERTHA BOWMAN
 Chas & Virginia Smith
 W. O. WYMER
 GAYLORD WYMER
 DANIEL HEISEL
 CHESTNUT STREET
 EMMA KETTLEWELL
 LILLIAN MC COLLOCH
 144-54
 134-64
 Verna Estimillion

B. & O. R. R.

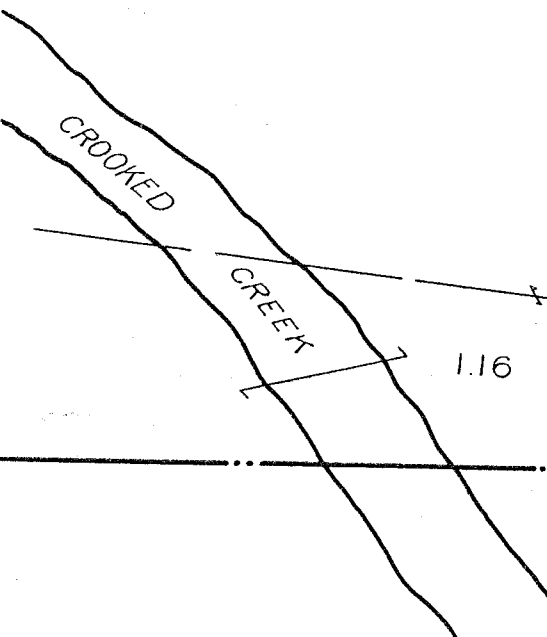
ELLIS & GENEVIEVE VICKERS
6.40

40	ELVIN & PAULINE MOORE (380-391)	0.14
150		
20		0.05
90	COBURN & DOROTHY VESSELS (385-250)	
150		
	492-89	
	Chas & Pauline Johnson (391-436)	
150		
	471-322	

MARY A. BROWN

14.20

ELLIS & Genevieve Vickers
7-5-52
0.14 Ac



CORPORATION LINE

SECTION LINE

CORPORATION & SECTION LINE

16

B. & O. R. R.

14

LIZZIE M. MOCK
14.68

D.L. Mc CONAUGHY
10.07

CORPORATION LINE

GUERNSEY COUNTY

CORPORATION LINE

SECTION LINE

LIZZIE M. MOCK
12.62

4.00

NATIONAL MAIN ST. PIKE 80'

FRANKLIN AVE

MAPLE

DELAWARE AVE 50'

B.

LIZZIE M. MOCK 1466

D.L. McCONAUGHY 10.07

MARY E. GEYER 5.00

GUERNSEY COUNTY

66 66 66 15 62 59.9 66 37 29 13

MARY WHITE ET AL 3/16/96
MARY CARPENTER
HERBERT LAW 4572-19
ELLA DUFF TRANS. 5-5-1977
FLOYD GALLANTINE 417-143

JEROME GIBSON MABEL
ELEANOR DANIEL BEATRICE 360/125 471-157
LLOYD BUCHANAN GLADYS 315/108
LLOYD BUCHANAN GLADYS 318/148

WILSON 442/546
MORRIS ALBERTA 11-20-5
LLOYD BUCHANAN GLADYS 318/148

MILLIE MARSHALL 464-311
CHARLES & KATHERINE TILLET 455-111
H. Y. HANES 477-461
CARL & MARY BROWN 592-477

ALEX & MILDRED MILLER 459-572
ALEX & ALLEN MILLER 492-398
CONCORD LOCKERS INC. 355/401
HARRY & CELIA SMOCK 454-245

CALLIE SMITH 270 784-241
HENRY & ROSIE WADDEL 165 784-257
OUTLOT

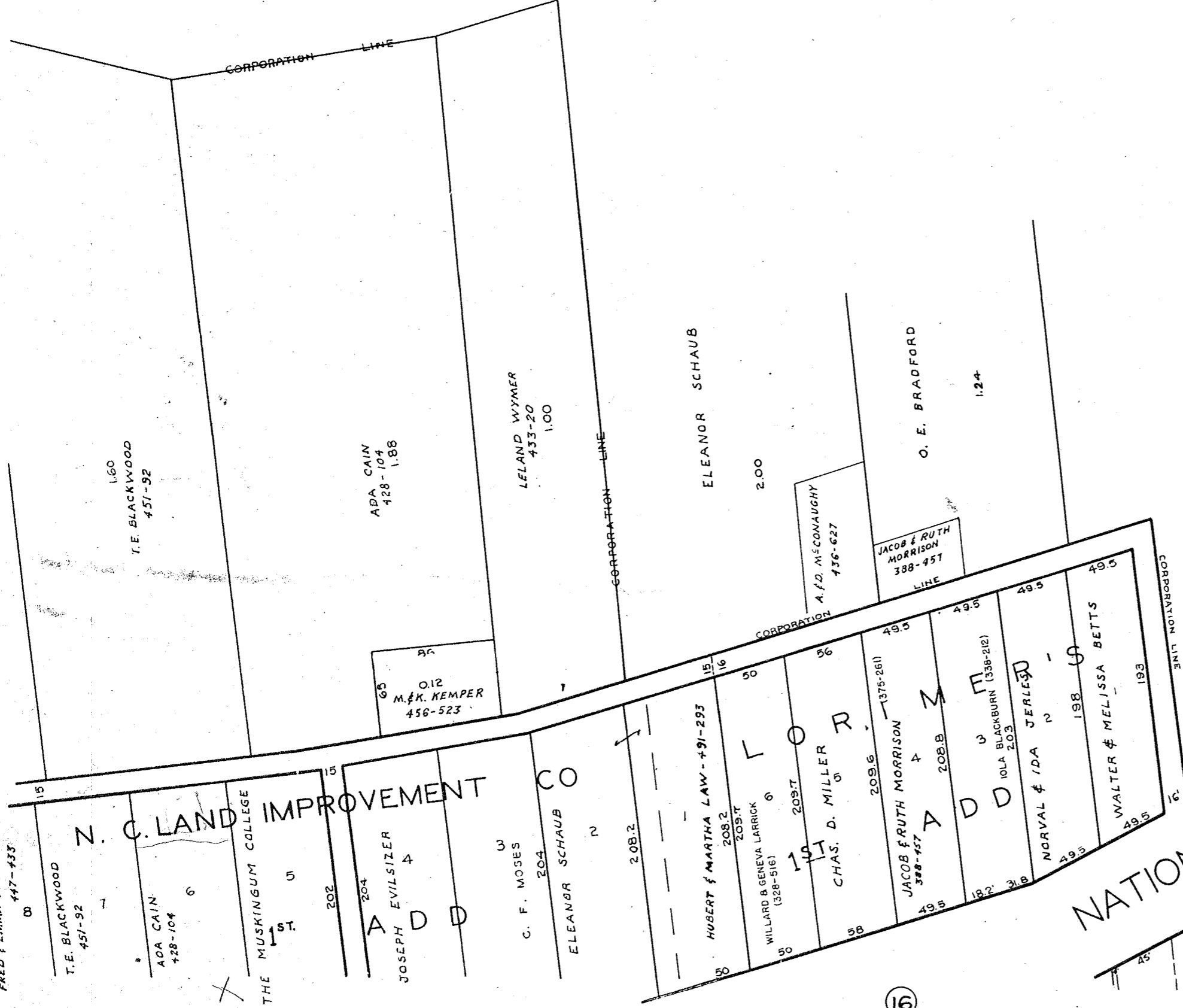
STATE OF OHIO 17
RALPH B. MARSHALL
GILBERT & PATRICIA OHT 33
166.1 489-556
DORA THOMPSON
BOYD & ARIESS DUNCAN 482/68 86-22
BERNICE POLLOCK 440-455
EDNA ADAM 423/45 21350

WILLARD & GENESIA LARRICK 486/296
MARTHA HATCHER 373/57
MARTHA HATCHER 341/380

ALICE NELSON 355-43
CORPORATION LINE

12

HOMER A. VERNON
3.91



PIKE '08

NATIONAL

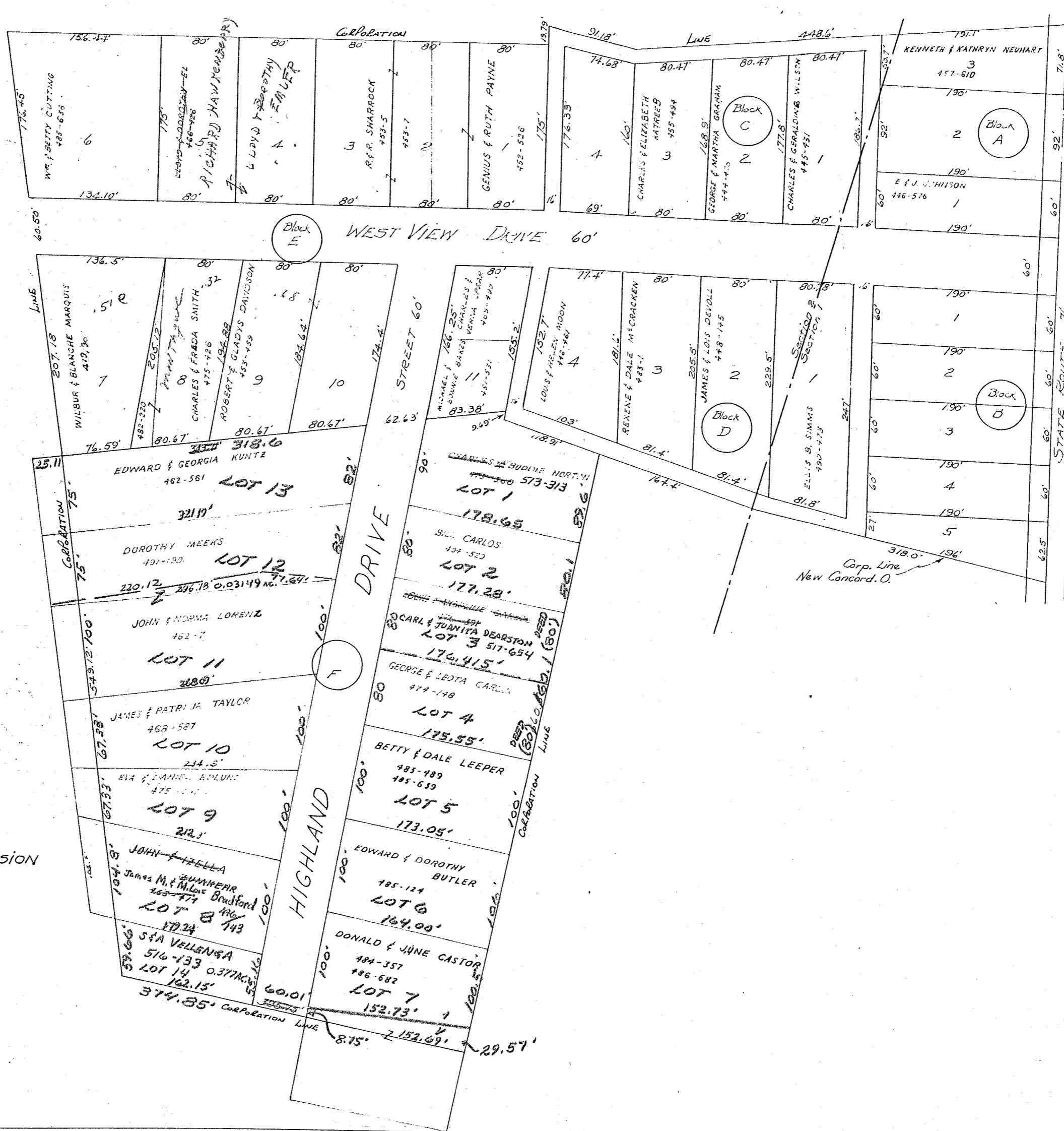
MARY E. GEYER
500

GUERNSEY COUNTY

16

NEW CONCORD

SHEET NO 17



VILLAGE OF NEW CONCORD

THE EARL JOHNSON SUBDIVISION
 (UNRECORDED)
 S.W. QTR. SEC. 1 & S.E. QTR. SEC. 2
 SCALE 1"=50'

SHEET NO. 18