



CALCULATED
SEJ
CHECKED
MJE

SCHEMATIC PLAN

MUS - C.R. 66A - 0.00

NORTH ST. CURVE DATA
P.I. Sta. 17+52.70
 $\Delta = 10^\circ 38' 10''$ (RT)
 $Dc = 19^\circ 11' 17''$
 $R = 300.00'$
 $T = 27.93'$
 $L = 55.43'$
 $E = 1.30'$
 $C = -55.61'$
 $C.B. = S 66^\circ 52' 32'' E$

BEGIN PROJECT
STA. 10+00.00
SLM 0.000

BEGIN WORK
STA. 9+88.00

END PROJECT
STA. 18+93.00
SLM 0.170

END WORK
STA. 19+00.00

CL C.R. 6
(OLD RIVER RD)

EXISTING SUPERSTRUCTURE
TO BE REMOVED

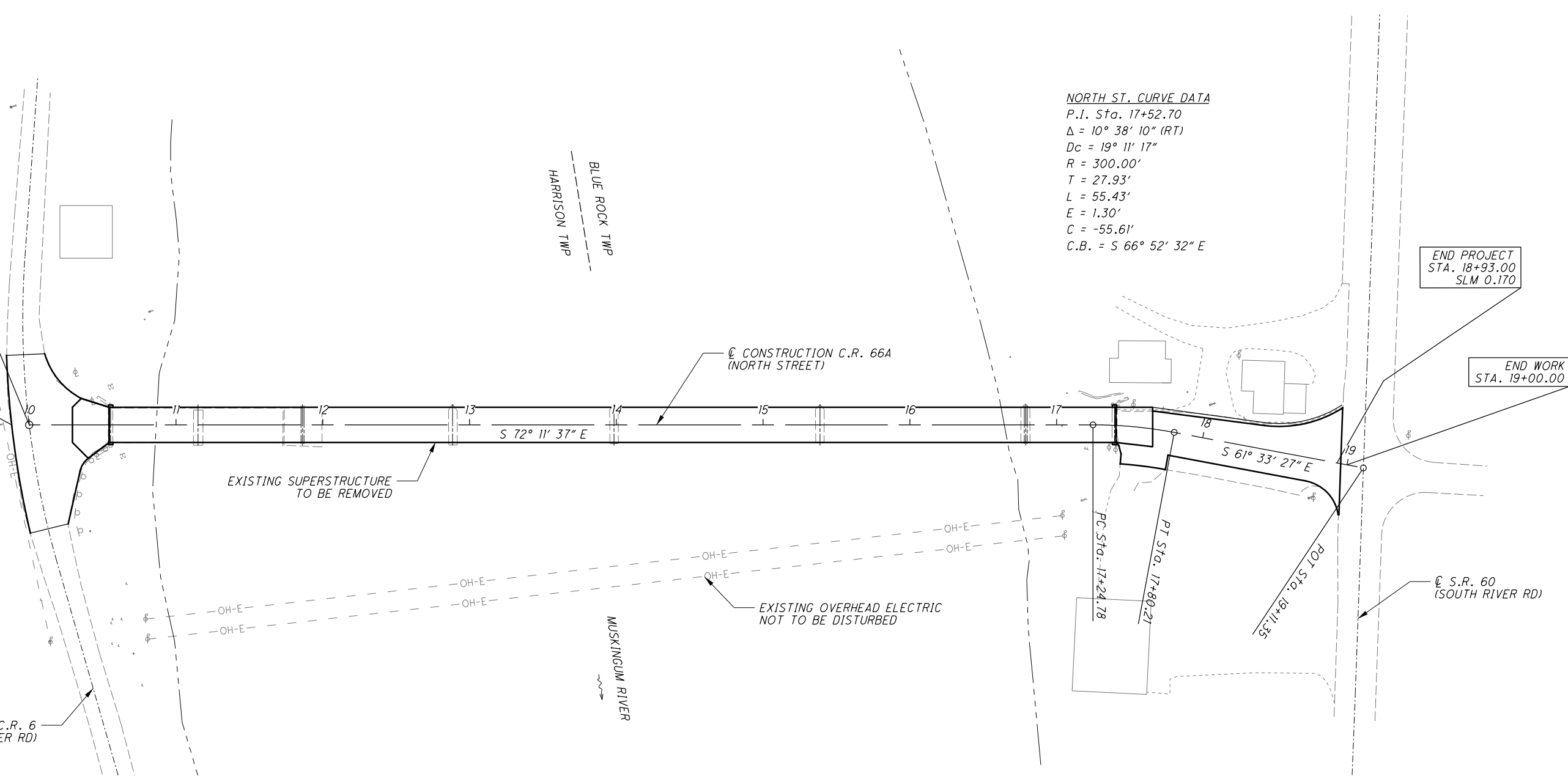
EXISTING OVERHEAD ELECTRIC
NOT TO BE DISTURBED

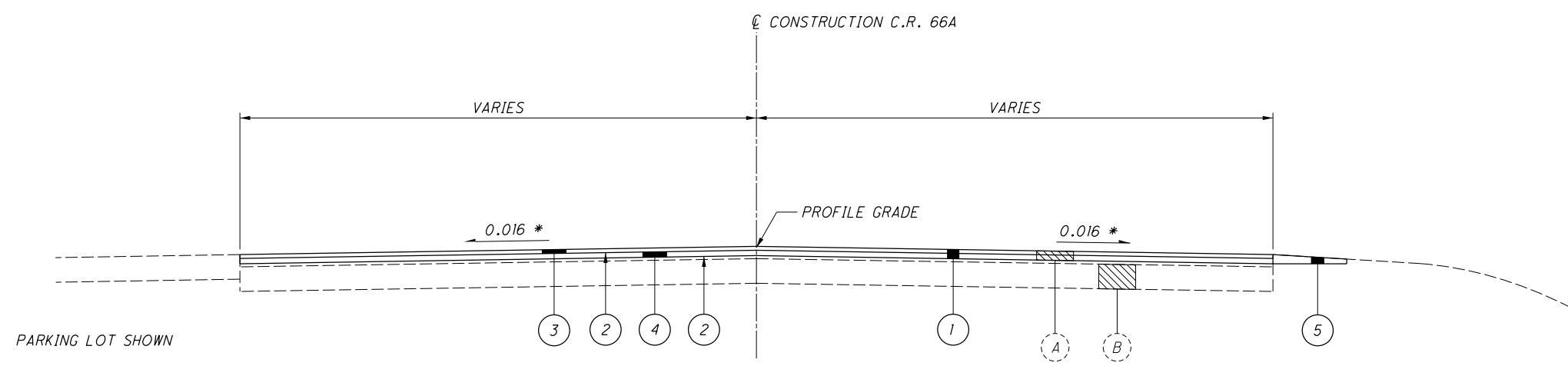
BLUE ROCK TWP
HARRISON TWP

MUSKINGUM RIVER

CL CONSTRUCTION C.R. 66A
(NORTH STREET)

CL S.R. 60
(SOUTH RIVER RD)





* SEE INTERSECTION DETAILS

ROADWAY SECTION

LEGEND

- ① 254 - PAVEMENT PLANING, 3" ASPHALT CONCRETE, AS PER PLAN
- ② ITEM 407 - TACK COAT (@ 0.05 GAL./SQ.YD.)
- ③ ITEM 441 - 1 1/4" - ASPHALT CONCRETE SURFACE COURSE, TYPE 1, (448) PG64-22
- ④ ITEM 441 - 1 3/4" ASPHALT CONCRETE INTERMEDIATE COURSE, TYPE 2, (448)
- ⑤ ITEM 411 - 3" STABILIZED CRUSHED AGGREGATE

- Ⓐ ± 4" BITUMINOUS ASPHALT
- Ⓑ ± 8" BITUMINOUS ASPHALT BASE

TYPICAL SECTION

MUS - C.R. 66A - 0.00

ROUNDING

THE ROUNDING AT SLOPE BREAKPOINTS SHOWN ON THE TYPICAL SECTIONS APPLY TO ALL CROSS-SECTIONS EVEN THOUGH OTHERWISE SHOWN.

UTILITIES

LISTED BELOW ARE ALL UTILITIES LOCATED WITHIN THE PROJECT CONSTRUCTION LIMITS TOGETHER WITH THEIR RESPECTIVE OWNERS:

AT&T OHIO:
160 N. 6TH STREET
ZANESVILLE, OHIO 43701
ATTN: BARRET TAMASOVICH

AEP OHIO POWER:
850 TECH CENTER DRIVE
GAHANNA, OHIO 43230
ATTN: PAUL PAXTON

THE LOCATION OF THE UNDERGROUND UTILITIES SHOWN ON THE PLANS ARE AS OBTAINED FROM THE OWNERS AS REQUIRED BY SECTION 153.64 O.R.C.

ELEVATION DATUM

ALL ELEVATIONS ARE BASED ON NAVD 88 DATUM.

WORK LIMITS

THE WORK LIMITS SHOWN ON THESE PLANS ARE FOR PHYSICAL CONSTRUCTION ONLY. PROVIDE THE INSTALLATION AND OPERATION OF ALL WORK ZONE TRAFFIC CONTROL AND WORK ZONE TRAFFIC CONTROL DEVICES REQUIRED BY THESE PLANS WHETHER INSIDE OR OUTSIDE THESE WORK LIMITS.

GROUND MOUNTED SIGNS

COUNTY WILL REMOVE ALL GROUND MOUNTED SIGNS ONCE ROAD CLOSURE BEGINS, AND WILL REINSTALL SIGNS ONCE ROAD IS OPENED TO TRAFFIC.

CONTRACTOR'S USE OF RIGHT-OF-WAY

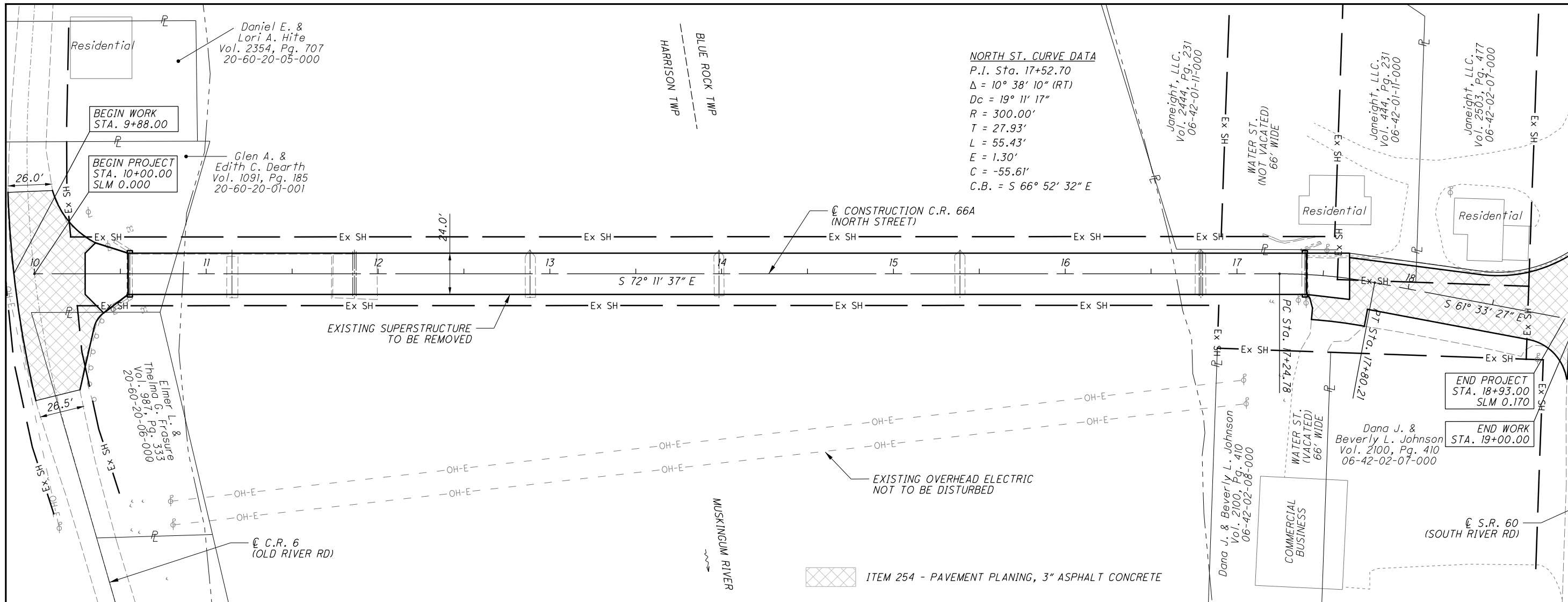
THE CONTRACTOR SHALL NOT USE OR ENTER ANY AREA OUTSIDE OF THE RIGHT-OF-WAY LIMITS THAT ARE SHOWN ON THE PLANS.

CALCULATED
SEJ
CHECKED
MJE

GENERAL NOTES

MUS - C.R. 66A - 0.00

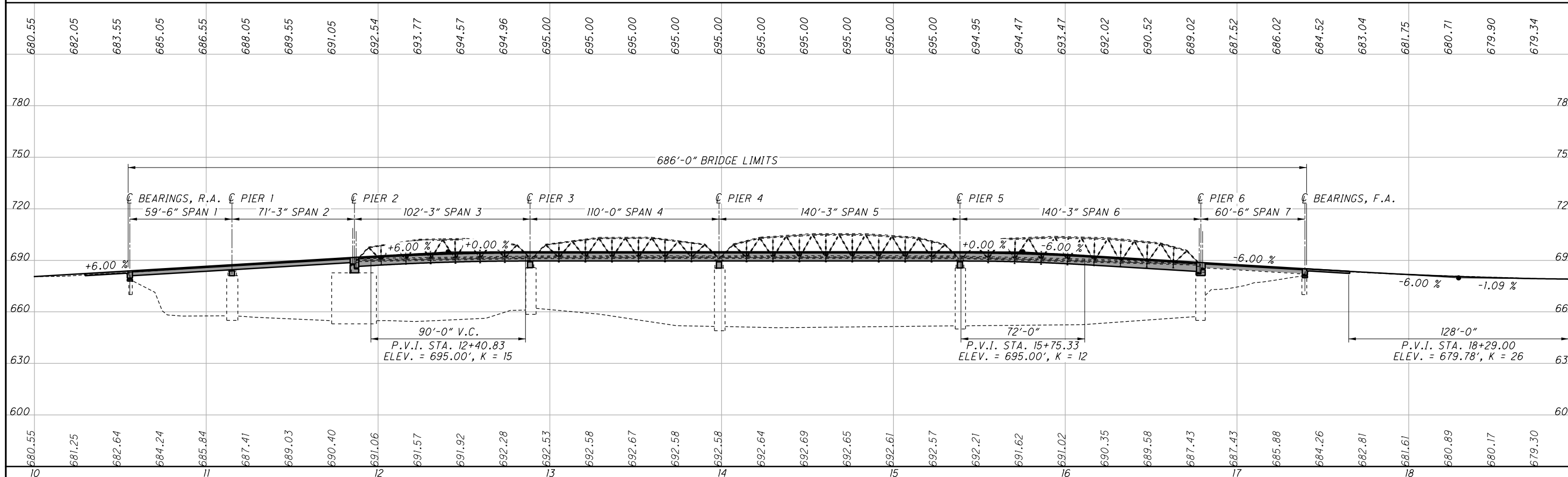
4
11



NORTH ST. CURVE DATA
 P.I. Sta. 17+52.70
 $\Delta = 10^\circ 38' 10''$ (RT)
 $D_c = 19^\circ 11' 17''$
 $R = 300.00'$
 $T = 27.93'$
 $L = 55.43'$
 $E = 1.30'$
 $C = -55.61'$
 $C.B. = S 66^\circ 52' 32'' E$

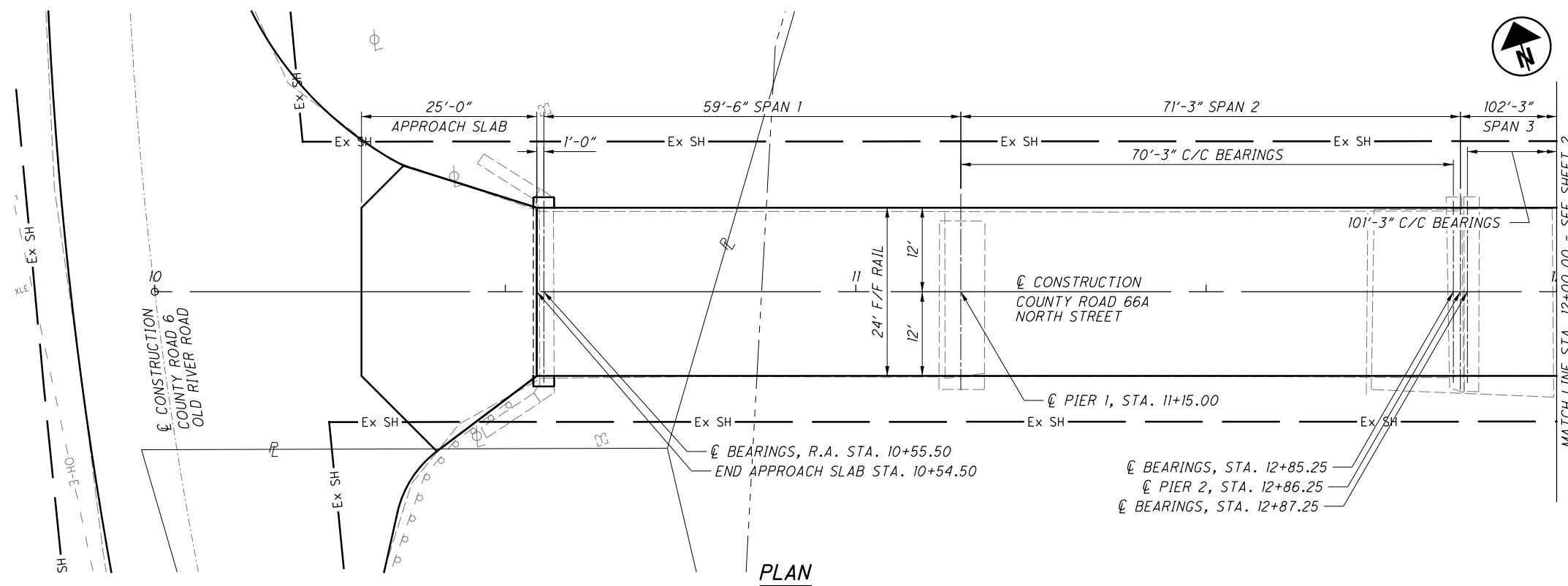


PLAN AND PROFILE
 STA. 10+00.00 TO STA. 19+00.00



MUS-C.R. 66A-0.00





PLAN

TRAFFIC DATA

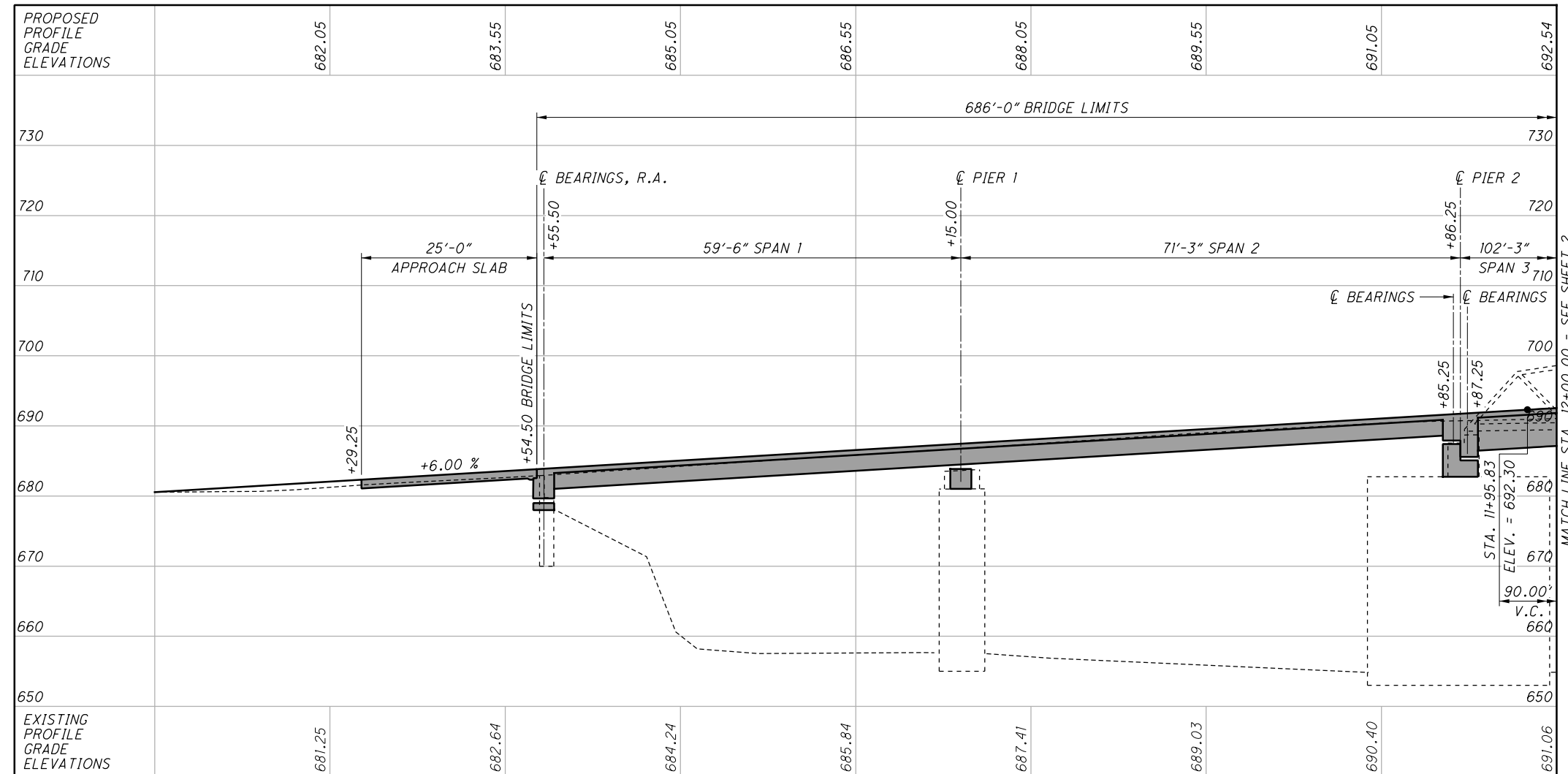
DESIGN TRAFFIC:
 2021 ADT = 914 2021 ADTT = 21
 2041 ADT = 1,005 2041 ADTT = 23
 DIRECTIONAL DISTRIBUTION = 55%

HYDRAULIC DATA

DRAINAGE AREA = 7,341 SQUARE MILES
 Q (100) = 77,700 CFS BASED ON FEMA FLOOD INSURANCE
 STUDY 39119CVOOB AUGUST 15, 2017
 STRUCTURE CLEARS THE 100 YEAR DESIGN HW BY 1.5' AT R.A. SPAN 1
 AND 10.1' AT SPANS 4 & 5

SPAN CONFIGURATION

SPANS 1 & 2 - CONTINUOUS ROLLED BEAM WITH COMPOSITE DECK
 SPANS 3 - 6 - CONTINUOUS PLATE GIRDER WITH COMPOSITE DECK
 SPAN 7 - SIMPLE ROLLED BEAM WITH COMPOSITE DECK



PROFILE ALONG CENTERLINE

EXISTING STRUCTURE

TYPE: SEVEN SPAN STRUCTURE WITH SIMPLE STEEL BEAM APPROACH SPANS AND TRUSSES WITH ASPHALT WEARING SURFACE ON SANDSTONE ABUTMENTS AND PIERS.

SPANS: 59'±, 71'-3"±, 102'-3"±, 110'±, 140'-3"±, 140'-3"±, 59'±

ROADWAY: 24'-0"± F/F RAIL

LOADING: HS-20-44

SKREW: NONE

APPROACH SLABS: NONE

ALIGNMENT: TANGENT WITH HORIZONTAL CURVE AT FORWARD ABUTMENT

CROWN: VARIES

STRUCTURAL FILE NUMBER: 6031307

DATE BUILT: UNKNOWN (SUPERSTRUCTURE REPLACEMENT 1971 WITH REHABILITATION IN 2001)

DISPOSITION: SUPERSTRUCTURE TO BE REPLACED

PROPOSED STRUCTURE

TYPE: SEVEN SPAN STEEL BEAM AND PLATE GIRDER WITH COMPOSITE REINFORCED DECK ON EXISTING SANDSTONE ABUTMENTS AND PIERS

SPANS: 59'-6", 71'-3", 102'-3", 110'-0", 140'-3", 140'-3", 60'-6"

ROADWAY: 24'-0" F/F RAIL

LOADING: HL-93 WITH 0.06 KSF FUTURE WEARING SURFACE

SKREW: NONE

APPROACH SLABS: 25' LONG (AS-1-15)

WEARING SURFACE: 1" MONOLITHIC CONCRETE

ALIGNMENT: TANGENT WITH HORIZ. CURVE AT FORWARD ABUTMENT

CROWN: 0.016 FT/FT

COORDINATES: LATITUDE 39°48'15"
 LONGITUDE 81°53'40"

Mark L. Ercher, P.E., P.S.
 155 Rail Road
 Zanesville, Ohio 43701
Muskingum County Engineer's Office
 ENGINEER'S OFFICE 746-4445

DESIGNED	SEJ	CHECKED	MJE
DRAWN	SEJ	REVISED	
REVIEWED		STRUCTURE FILE NUMBER	6031307
DATE			

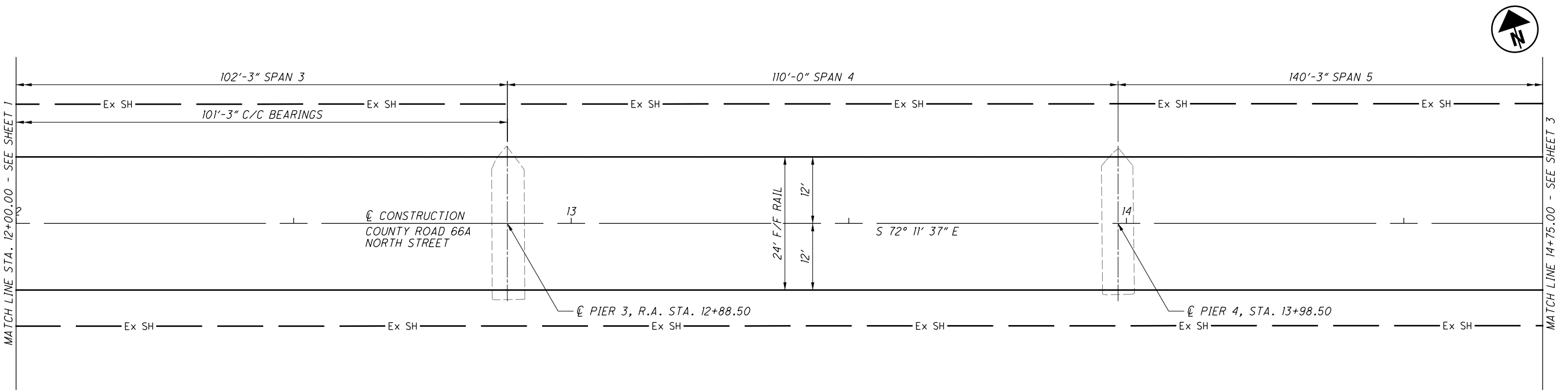
MUSKINGUM COUNTY
 STA. 10+54.50
 STA. 17+40.50

SITE PLAN
 BRIDGE NO. MUS-CR66A-0000
 OVER MUSKINGUM RIVER

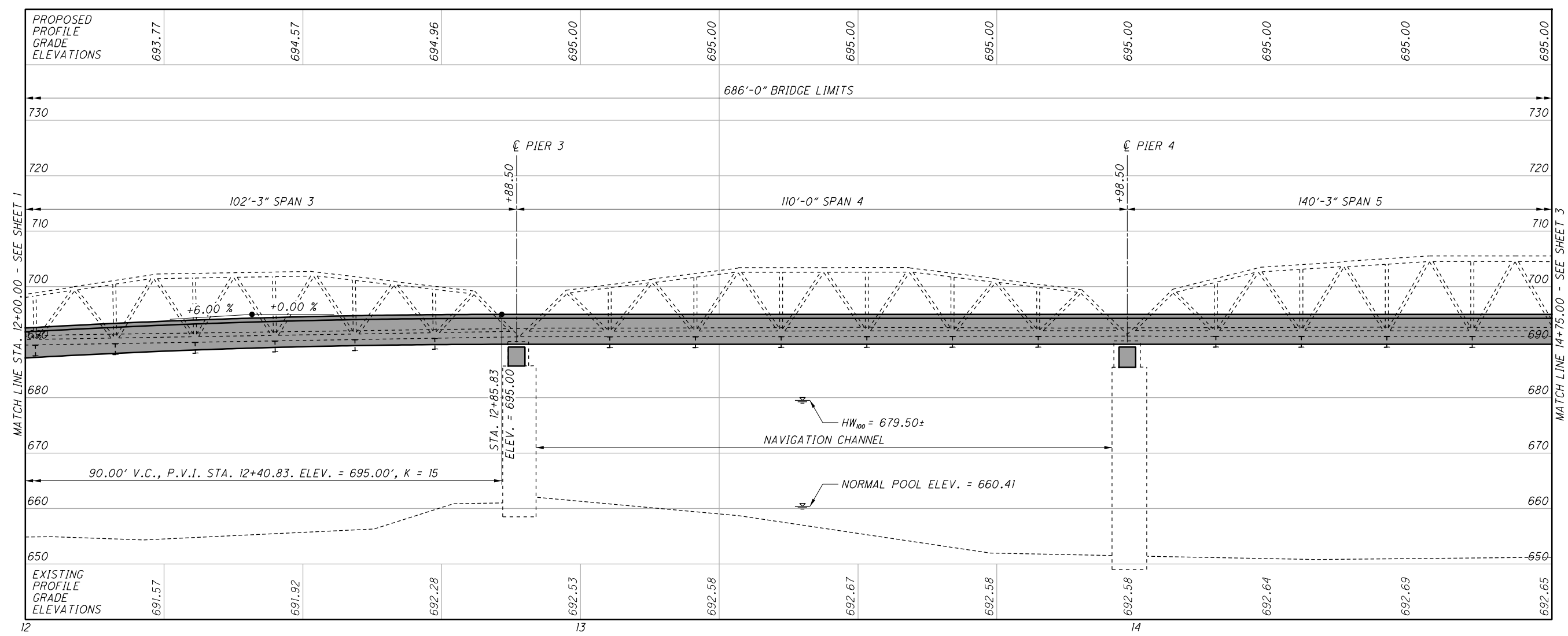
MUS-CR66A-0000
 PID No. 101730

1 / 6

6 / 11



PLAN



PROFILE ALONG C CONSTRUCTION



Mark L. Ercher, P.E., P.S.
155 Reil Road
Zanesville, Ohio 43701
ENGINEER'S OFFICE 740-444015

DESIGNED	SEJ	CHECKED	MJE
DRAWN	SEJ	REVIEWED	6031507
REVIEWED	DATE	STRUCTURE FILE NUMBER	6031507

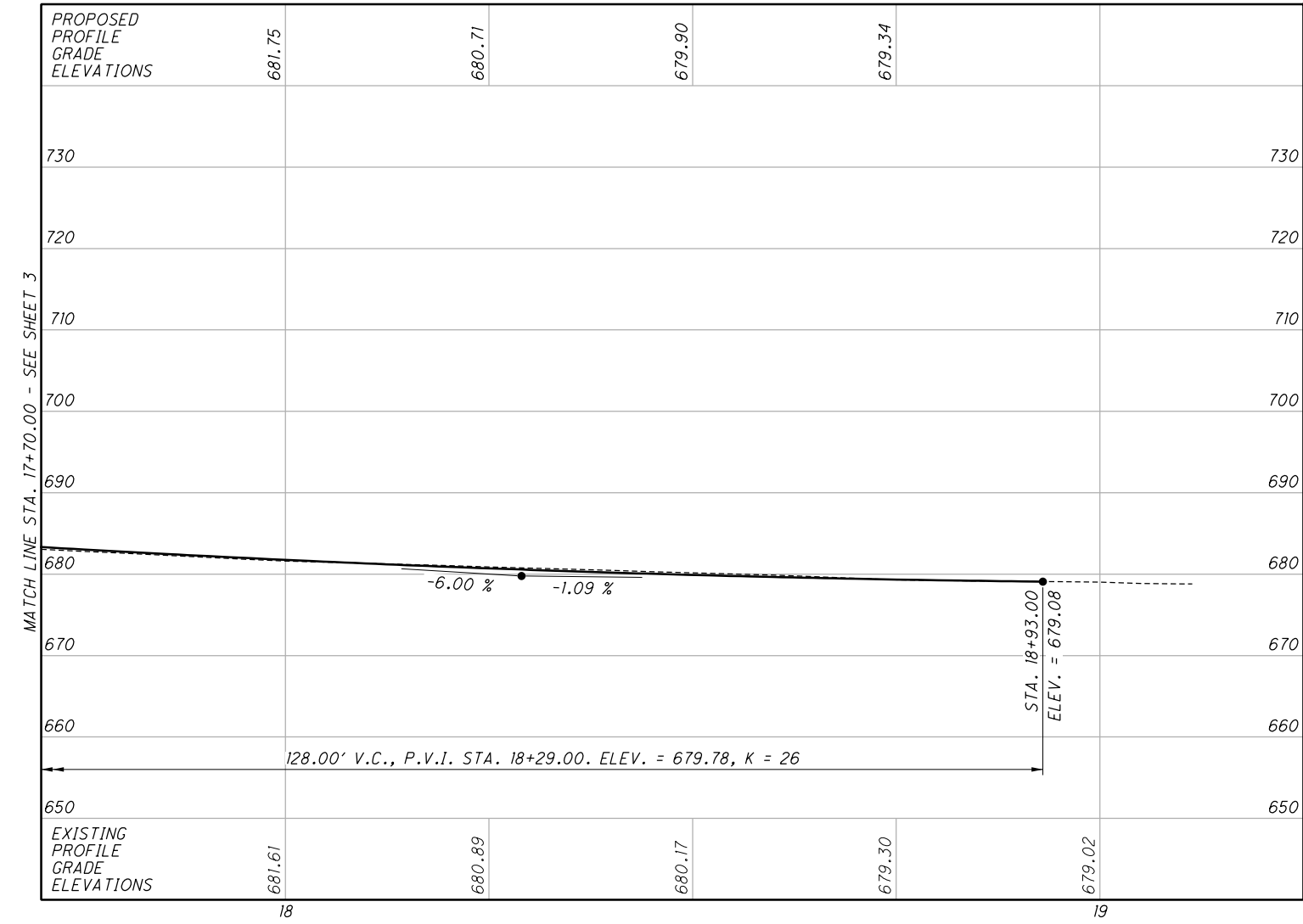
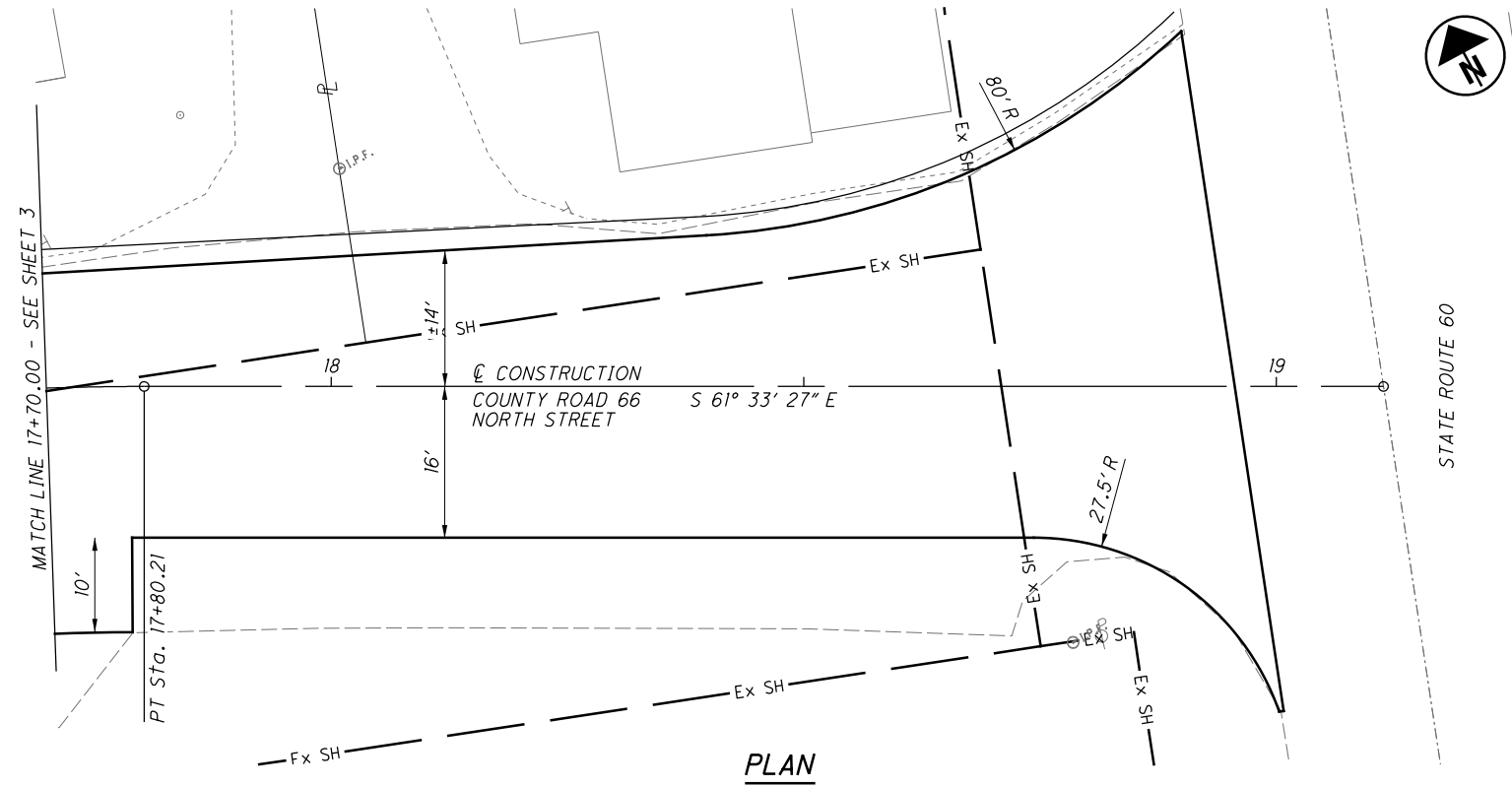
MUSKINGUM COUNTY
STA. 10+54.50
STA. 17+40.50

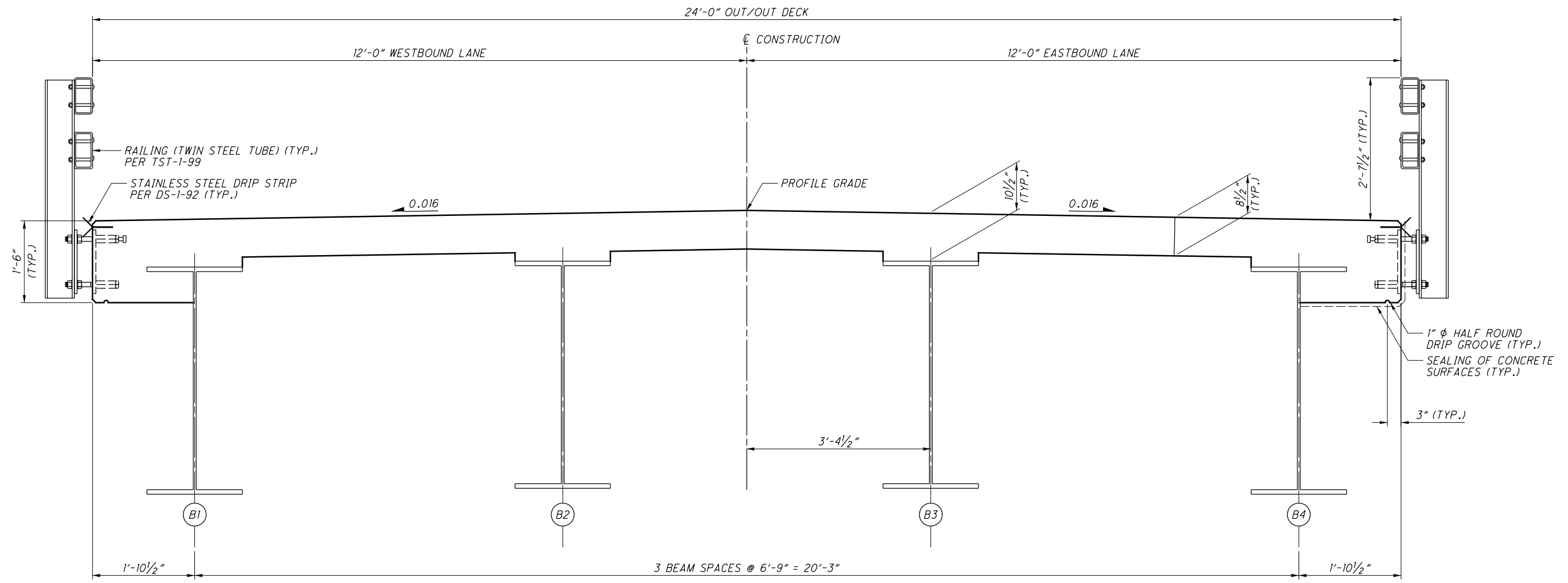
SITE PLAN
BRIDGE NO. MUS-CR66A-0000
OVER MUSKINGUM RIVER

MUS-CR66A-0000
PID No. 101730

2 / 6

7
11





TRANSVERSE SECTION

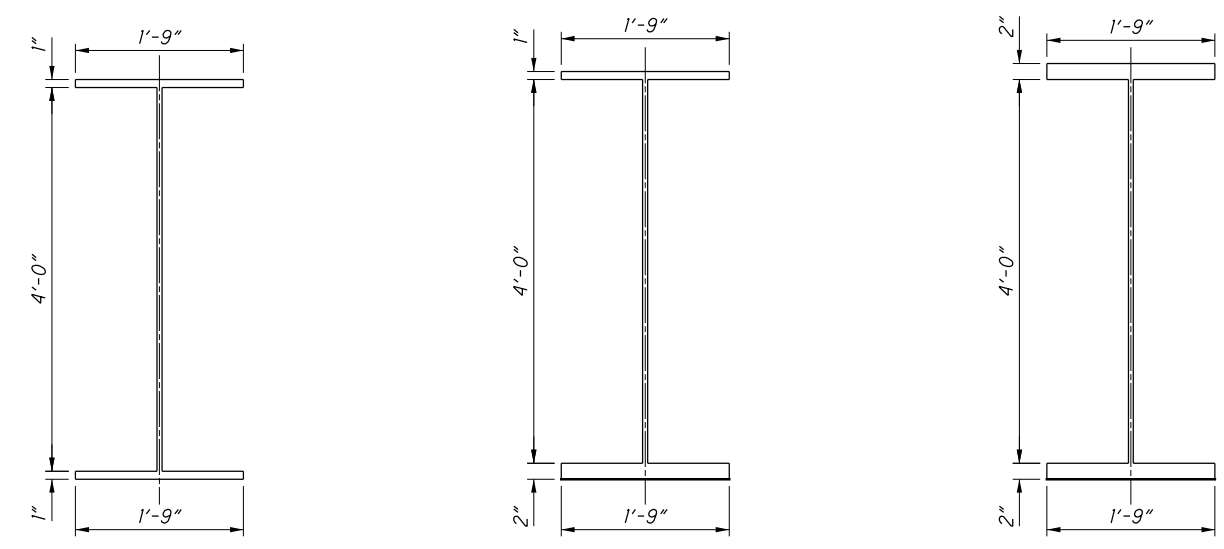
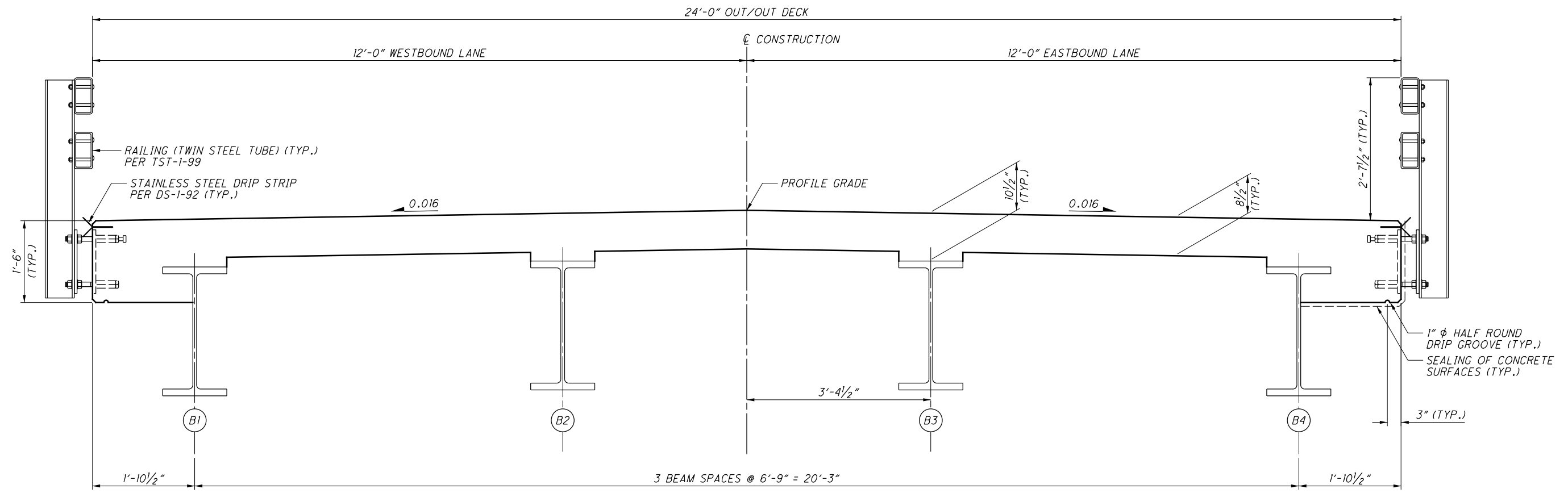


PLATE GIRDER SECTIONS

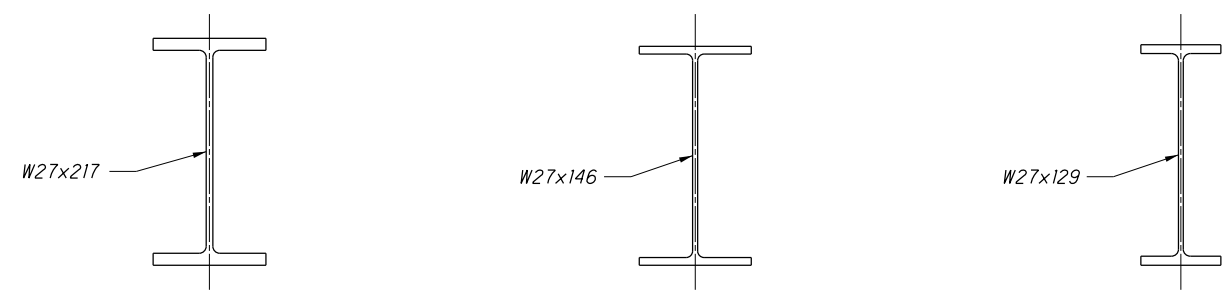
DESIGNED	SEJ	CHECKED	MJE
DRAWN	SEJ	REVISED	
REVIEWED		STRUCTURE FILE NUMBER	6031507
DATE			

TRANSVERSE SECTION - PLATE GIRDER SECTIONS
 BRIDGE NO. MUS-CR66A-0000
 OVER MUSKINGUM RIVER

MUS-CR66A-0000
 PID No. 101730



TRANSVERSE SECTION



ROLLED BEAM SECTIONS

DESIGNED	SEJ	CHECKED	MJE
DRAWN	SEJ	REVISED	
REVIEWED		STRUCTURE FILE NUMBER	6031507
DATE			

TRANSVERSE SECTION - ROLLED BEAM SECTIONS
 BRIDGE NO. MUS-CR66A-0000
 OVER MUSKINGUM RIVER

MUS-CR66A-0000
 PID No. 101730

