

EASTPOINTE DRIVE
ROAD IMPROVEMENTS
MUS-T.R.723
WASHINGTON TOWNSHIP
MUSKINGUM COUNTY

PROJECT DESCRIPTION

2016 SPECIFICATIONS

THE STANDARD SPECIFICATIONS OF THE STATE OF OHIO, DEPARTMENT OF TRANSPORTATION, INCLUDING CHANGES AND SUPPLEMENTAL SPECIFICATIONS LISTED IN THE PROPOSAL SHALL GOVERN THIS IMPROVEMENT.

INDEX OF SHEETS:

TITLE SHEET	1
TYPICAL SECTIONS	2
ROADWAY PLAN	3

FEDERAL PROJECT NO.

PID NO.

CONSTRUCTION PROJECT NO.

RAILROAD INVOLVEMENT

MUS-T.R. 723

1/3

UNDERGROUND UTILITIES
CONTACT BOTH SERVICES
CALL TWO WORKING DAYS
BEFORE YOU DIG

CALL
1-800-362-2764
(TOLL FREE)

OHIO UTILITIES PROTECTION SERVICE
NON-MEMBERS
MUST BE CALLED DIRECTLY

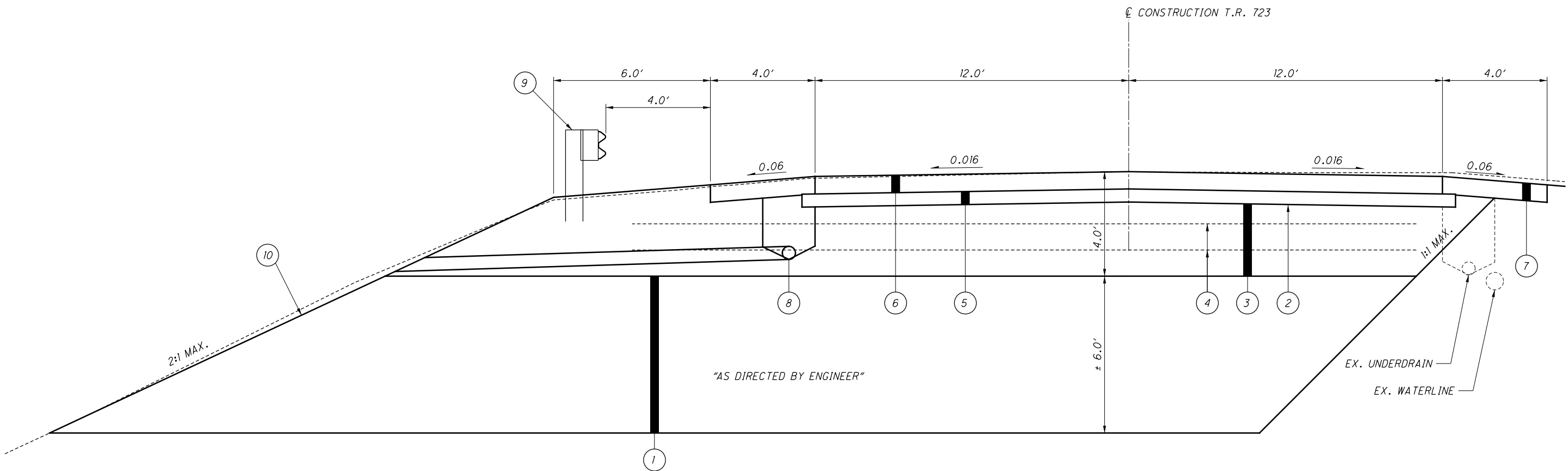
OIL & GAS PRODUCERS UNDERGROUND
PROTECTION SERVICE CALL: **1-800-925-0988**

PLAN PREPARED BY:

MUSKINGUM COUNTY
MCEO
ENGINEER'S OFFICE

DOUG DAVIS
COUNTY ENGINEER
155 REHL ROAD
ZANESVILLE, OHIO 43701

ENGINEERS SEAL:	STANDARD CONSTRUCTION DRAWINGS					SUPPLEMENTAL SPECIFICATIONS
	BP-3.1	1/20/12				
	MT-97.10	10/15/10				
	MT-97.11	10/15/10				
	MT-101.60	4/17/09				
SIGNED:						SPECIAL PROVISIONS
DATE: 10/9/2017						



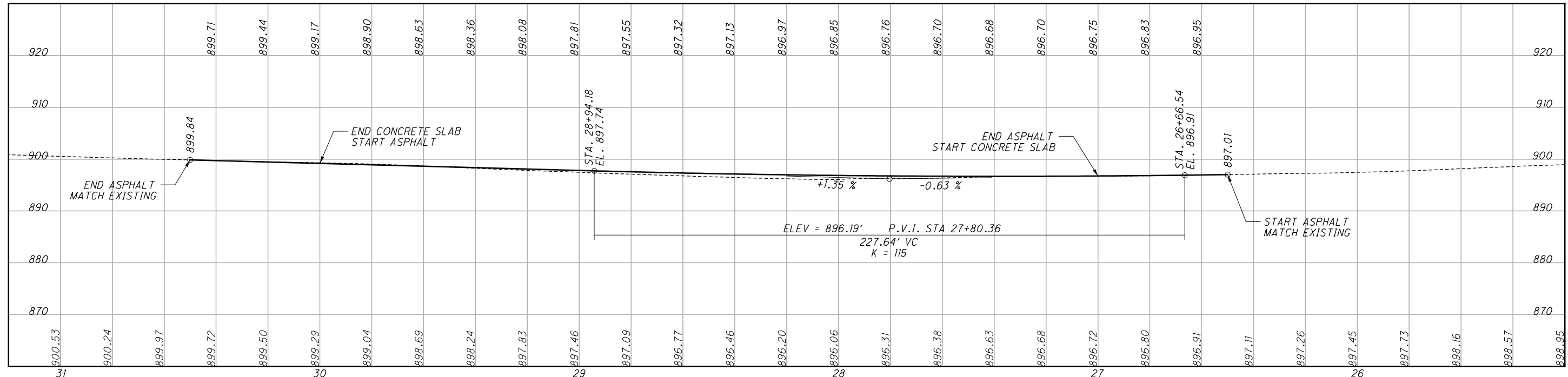
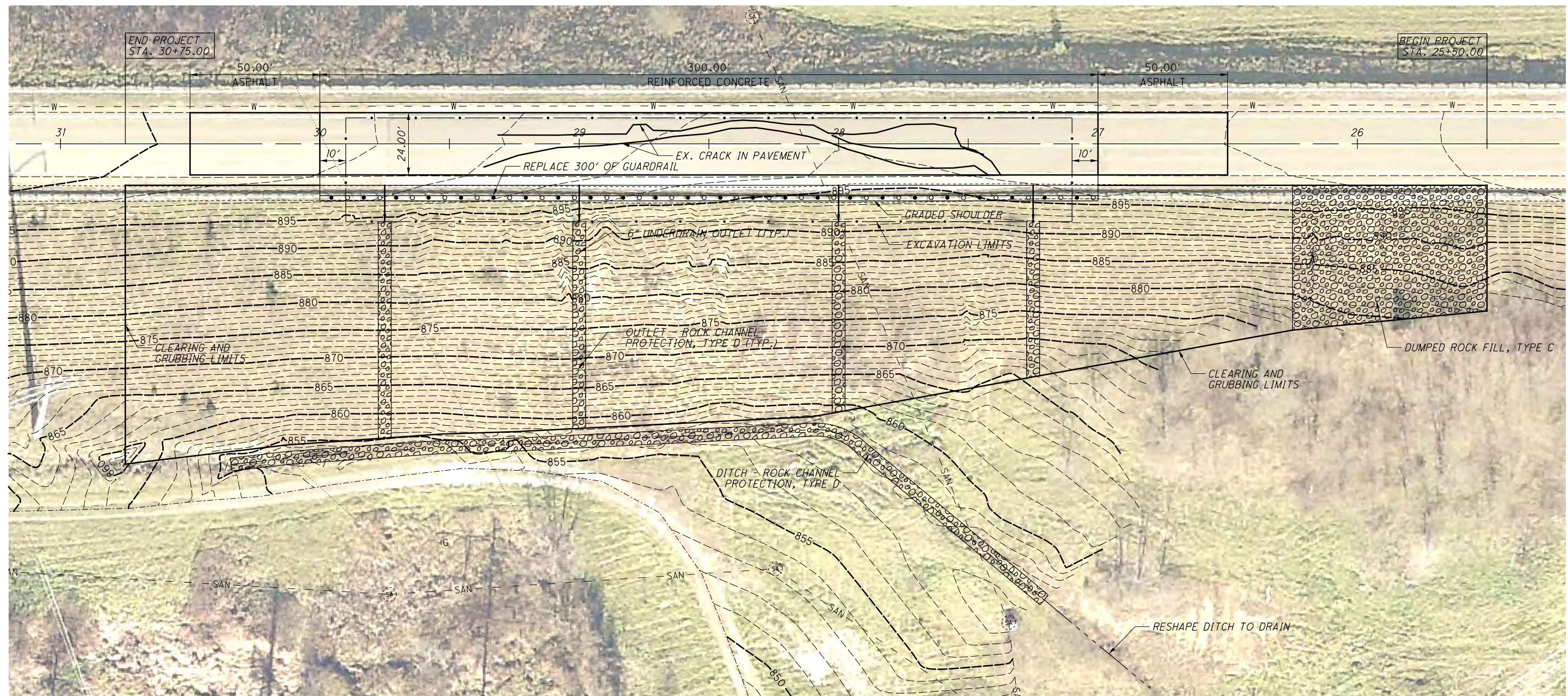
TYPICAL SECTION
 STA. 27+00 TO STA. 30+00 = 300.00 FT.

LEGEND

- ① ITEM 203 - GRANULAR EMBANKMENT, AS PER PLAN
- ② ITEM 204 - SUBGRADE COMPACTION
- ③ ITEM 204 - GRANULAR MATERIAL, TYPE B
- ④ ITEM 204 - GEOTEXTILE FABRIC, AS PER PLAN
- ⑤ ITEM 304 - 6" AGGREGATE BASE
- ⑥ ITEM 451 - 8" REINFORCED CONCRETE SLAB
- ⑦ ITEM 411 - 8" STABILIZED CRUSHED AGGREGATE
- ⑧ ITEM 605 - DEEP PIPE UNDERDRAINS
- ⑨ ITEM 606 - GUARDRAIL, TYPE 5
- ⑩ ITEM 659 - SEEDING AND MULCHING

TYPICAL SECTIONS

MUS-T.R. 723



PLAN AND PROFILE - EAST POINTE DR
 STA. 25+20 TO STA. 31+20

MUS-T.R.723

