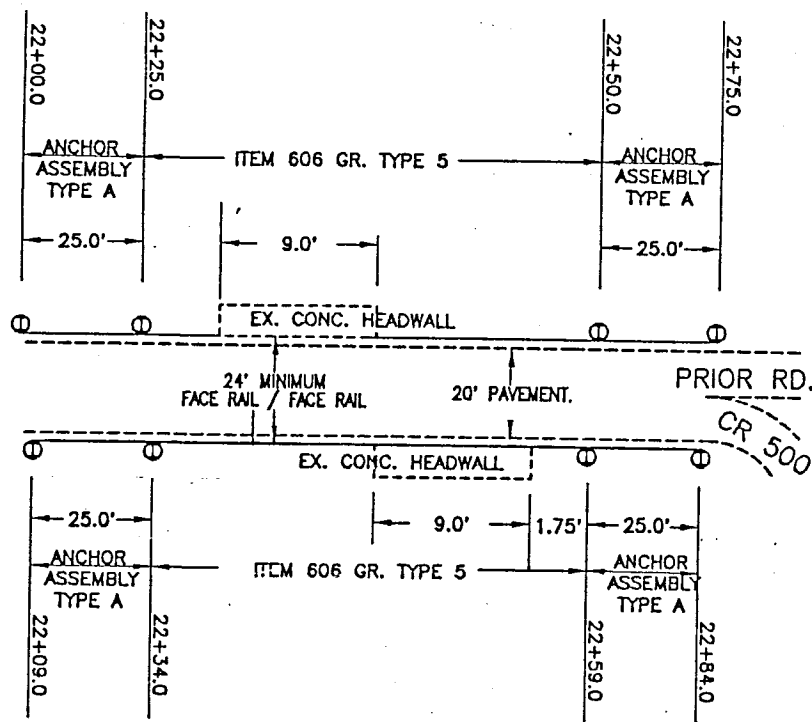


GUARDRAIL

CALC. BY JFM  
DATE 11-4-17  
CHKD. BY THL  
DATE 10-12-18

MUS CR-500-0.00  
CREAMERY ROAD

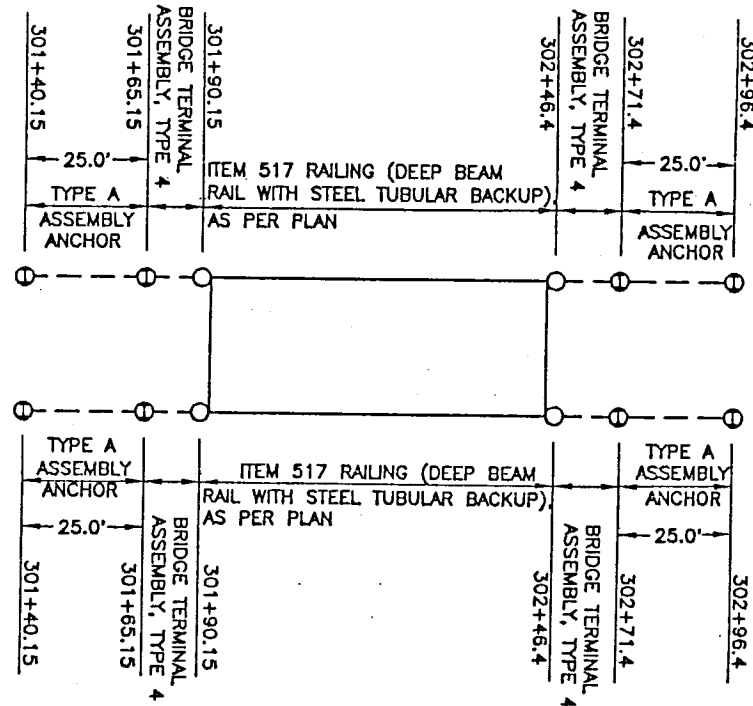
15  
15



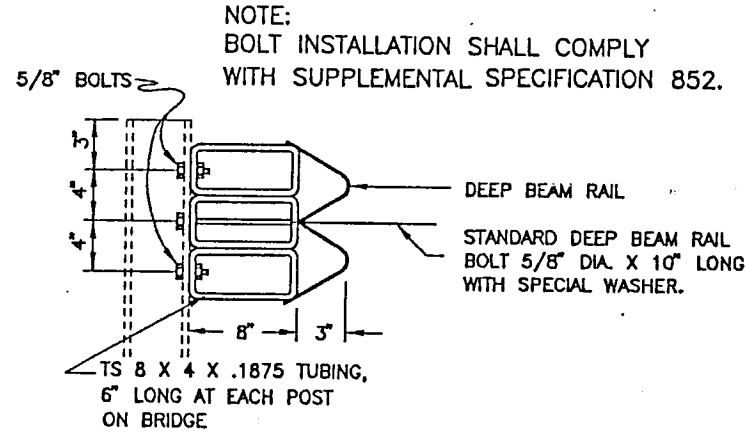
DETAIL FOR BOX CULVERT STA. 22+00.0 - 22+84.0

NOTE:  
THE PORTION OF THE EXISTING CONCRETE HEADWALLS  
SHALL BE REMOVED BY OTHERS. SAID WORK IS NOT  
INCLUDED IN THIS PROJECT.

ITEM 606 GUARDRAIL TYPE 5 SHALL SPAN THE  
HEADWALLS. A MINIMUM DISTANCE OF 24 FT. SHALL  
BE PROVIDED FROM FACE OF RAIL TO FACE OF RAIL.



DETAIL FOR BRIDGE & GUARDRAIL STA. 301+40.15 - 302+96.4



DETAIL FOR DEEP BEAM RAIL WITH STEEL TUBULAR BACKUP

517 RAILING (DEEP BEAM RAIL WITH STEEL  
TUBULAR BACKUP), AS PER PLAN

STEEL TUBULAR BACKUP AND DEEP BEAM RAIL  
SHALL BE INSTALLED ON THE EXISTING POST.  
TUBE SIZE SHALL BE 8" X 4" X 3/16". THIS  
WORK SHALL BE INCLUDED IN ITEM 517, RAILING  
(DEEP BEAM RAIL WITH STEEL TUBULAR BACKUP),  
AS PER PLAN.

NOTE:  
SEE STANDARD DRAWING DBR-2-73  
FOR DETAILS NOT SHOWN.