

GENERAL NOTES

FIELD OFFICE:

The Contractor shall provide a suitable field office having a minimum of 150 sq. ft. of floor space and in addition to the requirements of Item 619, he shall provide and maintain sanitary provisions as per 107.06.
All the above is included in the lump sum price bid for Item 619, Field Office.

TRAFFIC:

Traffic shall be maintained at all times. The length of restricted traffic zones shall be kept to a minimum consistent with the specification requirements for protection of completed courses.

INTERMEDIATE COURSE AND/OR SPOT LEVELING OR PATCHING:

The material shall be placed in a separate operation where and as directed by the engineer.

ROUNDING OF CORNERS SHOWN ON CROSS SECTIONS:

The rounded corners shown on the typical sections, apply to all cross section even though otherwise shown on the plans.

SEEDING:

All areas disturbed by construction shall be seeded.

REMOVAL OF TREES AND STUMPS:

All trees and stumps within the construction limits of this project shall be removed under the lump sum price bid for Item 201 Clearing and Grubbing.

The State of Ohio reserves the right to order the removal of additional trees or stumps outside of the limits of construction but within the right-of-way. Payment for the removal of these additional trees or stumps shall be included in the lump sum price bid for Item 201 Clearing and Grubbing.

FARM DRAINS:

All farm drains which are encountered during construction shall be provided with unobstructed outlets under the direction of the engineer. Existing collectors which are located below the roadway ditch elevations and which cross the roadway shall be replaced within the construction limits by Item 603 Conduit, Type B, one commercial size larger than the existing conduit.

Existing collectors and isolated farm drains which are encountered above the elevation of the roadway ditches shall be outletted into the roadway ditch by 603 Type F Conduit. The optimum outlet elevation shall be, if possible, one foot above the flowline elevation of the ditch.

The location, type, size and grade of required replacements shall be determined by the engineer during construction and payment shall be made on final measurement.

The following estimated quantities have been included in the General Summary for the work noted.

Item 603 6" Conduit, Type B 100 Lin. Ft.

Item 603 6" Conduit, Type F 50 Lin. Ft.

Necessary bends and branches shall be included for payment in the pertinent item.

None of the above materials shall be ordered by the Contractor until requested by the engineer.

CONNECTIONS TO EXISTING PIPE:

Where the plans provide for proposed conduit to be connected to an existing conduit, it shall be the responsibility of the Contractor to locate the existing pipe both as to line and grade before he starts to lay the proposed conduit.

Payment for all operations described above shall be included in the unit price bid for the pertinent 603 conduit item.

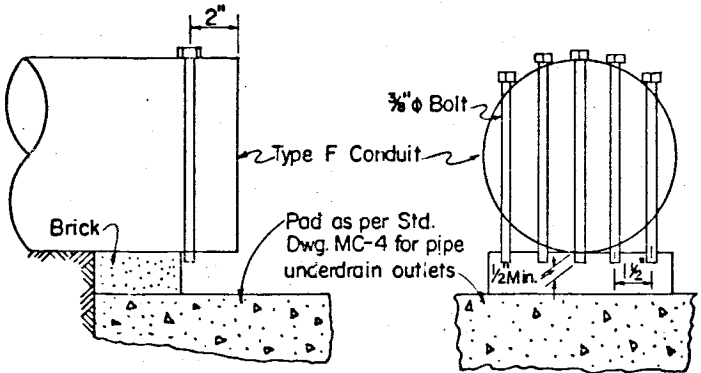
ANIMAL GUARD FOR PIPE OUTLETS:

Animal guards shall be provided at the outlet end of all pipe underdrains and farm drains except when they outlet into a drainage structure. The animal guard shall comply with the detail shown on this sheet.

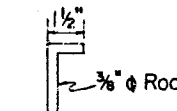
Payment for all material, labor and installation shall be included in the unit price bid per each for Item 603 Animal Guard for Pipe Outlet.

The following estimated quantities have been included in the General Summary.

Item 603 Animal Guard For Pipe Outlet 2 Each



BOLT AND ROD TABLE							
Conduit Size	4"	6"	8"	10"	12"	15"	18"
No. of Bolts or Rods	2	3	5	6	7	9	11



ANIMAL GUARD FOR PIPE OUTLET

The steel bolts or rods shall be galvanized in accordance with ASTM A153. The holes in the pipe shall be 1/2" diameter. In lieu of drilling or punching holes into the pipe, a metal collar meeting all the above requirements may be clamped on the end of the pipe if, in the opinion of the Engineer, it will provide the same results. When a pad as shown on Std. Dwg. MC-4 is required at the outlet end of the pipe, a brick may be placed between the pad and the pipe provide clearance for the bolts or rods.

CALCULATED BY W.M. DATE 10-10-75
CHECKED BY J.D. DATE 11-15-75

FHWA REGION	STATE	PROJECT
5	OHIO	

2
6

COUNTY ROAD 55
MUSKINGUM COUNTY

GENERAL SUMMARY

* Farm Drains

FROM SHEET NO.		ITEM	TOTALS	UNIT	DESCRIPTION
2	3				Federal Type Code 6203 (Except as shown)
					ROADWAY
Lump		201	Lump	Lump	Clearing and Grubbing
2.7		203	2.7	Miles	Linear Grading
					EROSION CONTROL - Type code Y-005
39653		659	39653	Sq. Yds.	Seeding and Mulching
357		659	357	Tons	Commercial Fertilizer (12-12-12)
1784		659	1784	Tons	Agricultural Liming
					DRAINAGE
	1.6	602	1.6	Cu. Yds.	Concrete Masonry
100		603	* 100	Lin. Ft.	6" Conduit, Type B
50	40	603	90	Lin. Ft.	6" Conduit, Type F
	34	603	34	Lin. Ft.	12" Conduit, Type A
	20	603	20	Lin. Ft.	12" Conduit, Type D
	17	603	17	Lin. Ft.	15" Conduit, Type A
	7	603	7	Lin. Ft.	24" Conduit, Type B
	1	604	1	Each	Standard No. 2-3 Catch Basin
2		603	2	Each	Animal Guard For Pipe Outlet
					PAVEMENT
	1043	304	1043	Cu. Yds.	Aggregate Base
	1498	402	1498	Cu. Yds.	Asphalt Concrete, AC-20
	889	404	889	Cu. Yds.	Asphalt Concrete, AC-20
	2867	407	2867	Gals.	Tack Coat: 702.02, RC-250; or 702.04, SS-1, SS1H, MS-2 or RS-1
	100	407	100	Tons	Cover Aggregate
	1903	408	1903	Gals.	Bituminous Prime Coat: 702.09, RT-2 or RT-3 ; 702.02, MC-30 or MC-70; or 702.03, Primer 20
Lump		614	Lump	Lump	Maintain'n Traffic
Lump		619	Lump	Lump	Field Office
		623	Lump	Lump	Construction Layout Stakes

1498
889
2387 Tons

LINE	ITEM	DESCRIPTION	CALCULATIONS
1	404	Asph. Conc. AC-20	Sta. 0+00 to Sta. 142+75=14275.00' x 20' ÷ 9 = 31722.22 sq. yds. x .0278 = 881.88 Cu. Yds.
2			Estimated 6 drives = (5' x 10' ave. + 5' x 5' = 75 sq. ft.) = 450 sq. ft. + 5 Appr. (5' x 20' ave. + 5' x 5' est. = 125 sq. ft.) = 625 sq. ft.
3			1075 sq. ft. ÷ 9 = 119.44 sq. yds. x .0625 ave. = 7.47 Cu. Yds.
4			From Line 1 881.88 Cu. Yds. + From Line 3 7.47 Cu. Yds. = 639.35 Cu. Yds.
5	402	Asph. Conc. AC-20	From Line 1 31722 sq. yds. x .0347 = 1100.7 Cu. Yds. + From Line 1 14275.00' x 10' ave. ÷ 9 = 28550 sq. yds. x .0139 ave. = 396.8 Cu. Yds.
6			From Line 5 1100.7 Cu. Yds. + From Line 6 396.8 Cu. Yds. = 1497.5 Cu. Yds.
7			
8	407	Tack Coat	From Line 5 28550 sq. yds. + From Line 3 119.44 sq. yds. = 28669.44 sq. yds. x 0.10 gal. = 2867 Gals.
9	407	Cover Aggr.	From Line 8 28669.44 sq. yds. x 7 lbs. ÷ 2200 = 100.34 Tons
10	304	Aggregate Base	From Line 1 14275.00' x 3' ave. ÷ 9 = 4758.33 sq. yds. x .1667 = 793.21 Cu. Yds. + (Est.) 35 drives & apprs.
11			(5' x 10' ave. + 5' x 5' = 75 sq. ft.) = 2625 sq. ft. ÷ 9 = 291.67 sq. yds. x .0625 ave. = 18.23 Cu. Yds. + 100' drive
12			(100' x 5' x .1667 ave. ÷ 27) = 3.09 Cu. Yds.
13			From Line 10 793.21 Cu. Yds. + From Line 11 18.23 Cu. Yds. + From Line 12 3.09 Cu. Yds. = 814.53 Cu. Yds.
14	408	Bit. Prime Coat	From Line 10 4758 sq. yds. x 0.40 = 1903 Gals.
15	659	Seeding & Mulching	From Line 1 14275 x 25 ave. ÷ 9 = 39653 Sq. Yds.
16	659	Comm. Fertilizer	From Line 15 39653 sq. yds. x 9 x 20 ÷ (1000 x 2000) = 3.57 Tons
17	659	Agriculture Liming	From Line 15 39653 sq. yds. x 9 x 100 ÷ (1000 x 2000) = 17.84 Tons
18	203	Linear Grading	From Line 1 14275 ÷ 5280 = 2.704 Miles