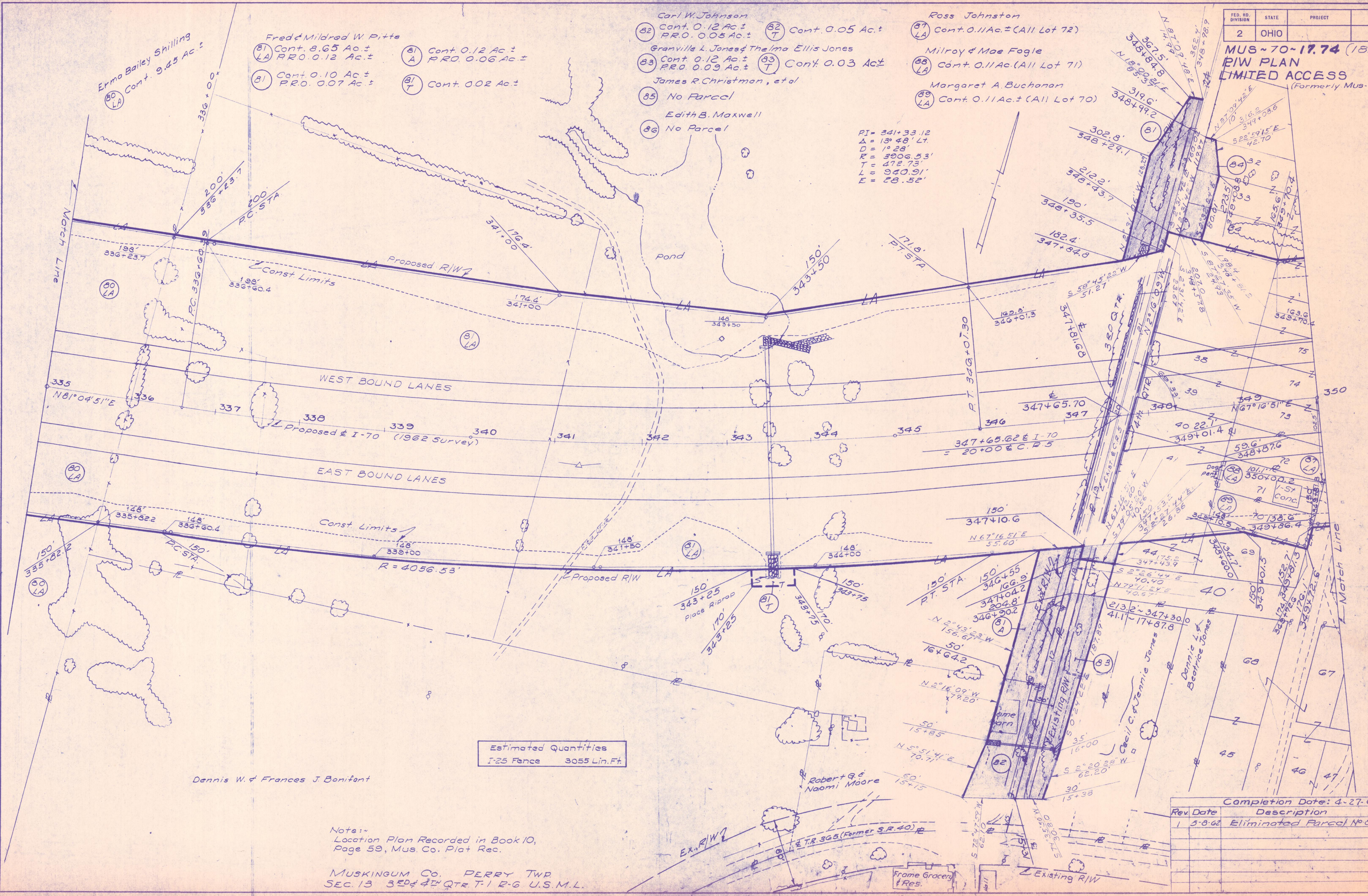


- Carl W. Johnson
 Cont. 0.12 Ac.±
 P.R.O. 0.05 Ac.±
- Ross Johnston
 Cont. 0.11 Ac.± (All Lot 72)
- Milroy & Mae Fogle
 Cont. 0.11 Ac.± (All Lot 71)
- Margaret A. Buchanan
 Cont. 0.11 Ac.± (All Lot 70)
- Fred & Mildred W. Pitts
 (81) Cont. 8.65 Ac.±
 P.R.O. 0.12 Ac.±
 (81) Cont. 0.10 Ac.±
 P.R.O. 0.07 Ac.±
 (81) Cont. 0.12 Ac.±
 P.R.O. 0.06 Ac.±
 (81) Cont. 0.02 Ac.±
- Granville L. Jones & Thelma Ellis Jones
 Cont. 0.12 Ac.±
 P.R.O. 0.09 Ac.±
- James R. Christman, et al
 (85) No Parcel
 Edith B. Maxwell
 (86) No Parcel

PI = 341+33.12
 Δ = 13° 48' Lt.
 D = 1° 28'
 R = 3906.53'
 T = 472.73'
 L = 940.91'
 E = 28.52'



Estimated Quantities
 I-25 Fence 3055 Lin. Ft.

Dennis W. & Frances J. Bonifant

Note:
 Location Plan Recorded in Book 10,
 Page 59, Mus. Co. Plat Rec.

MUSKINGUM Co. PERRY TWP
 SEC. 13 3RD & 4TH QTR T-1 R-6 U.S.M.L.

Completion Date: 4-27-62

Rev. Date	Description
5-8-62	Eliminated Parcel No 85