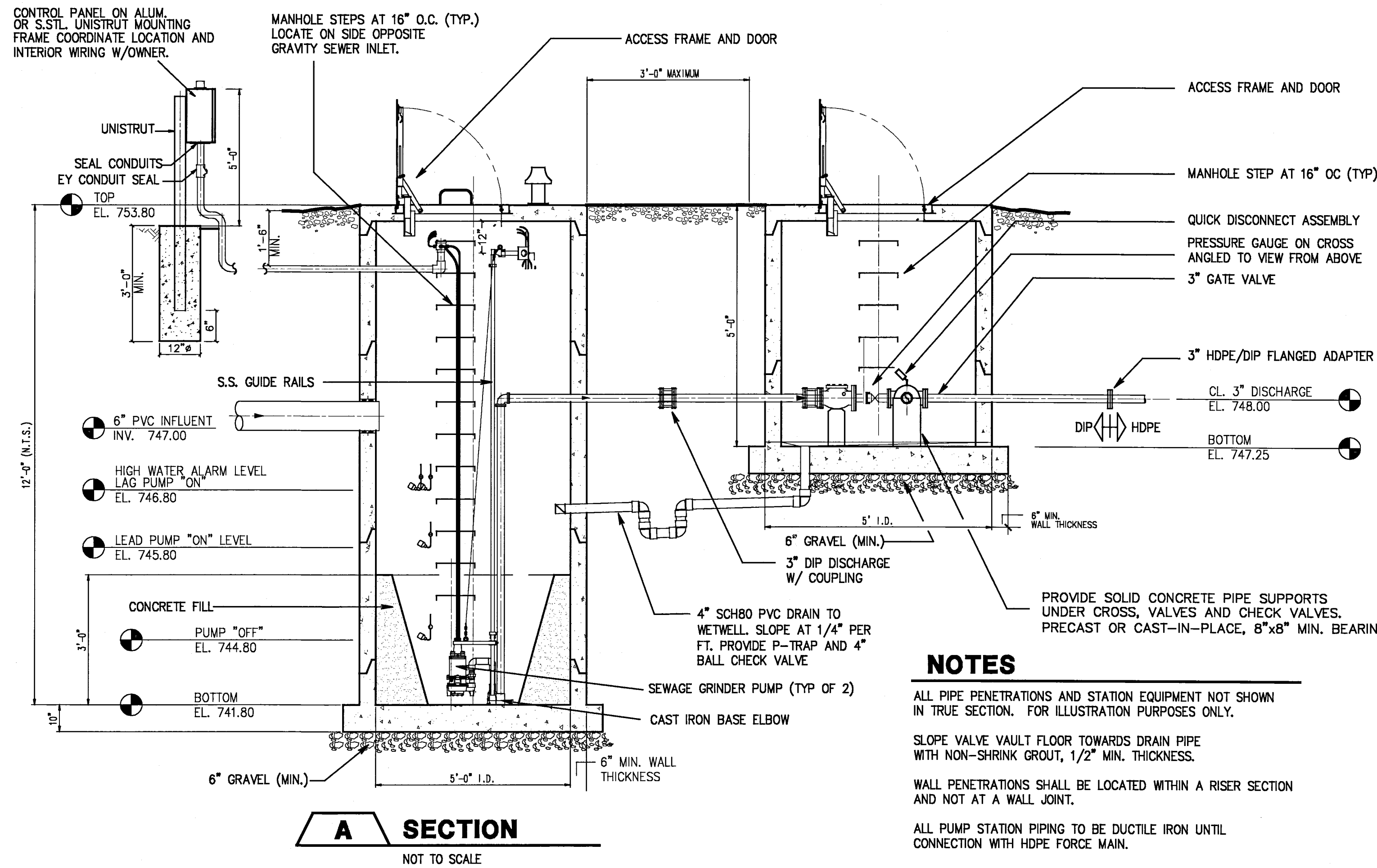
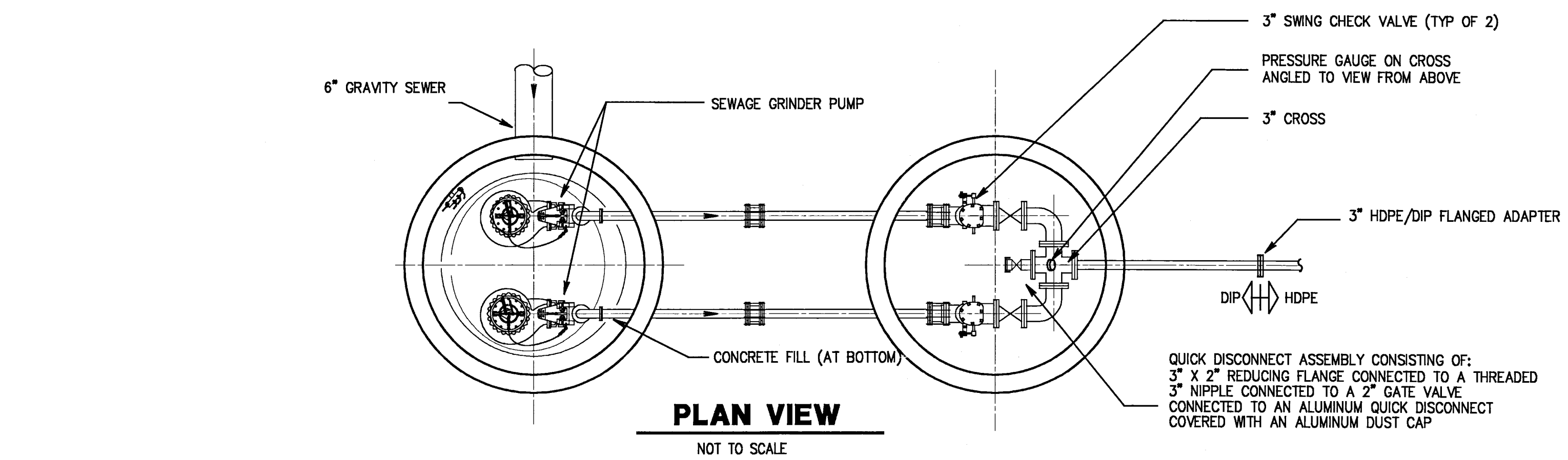
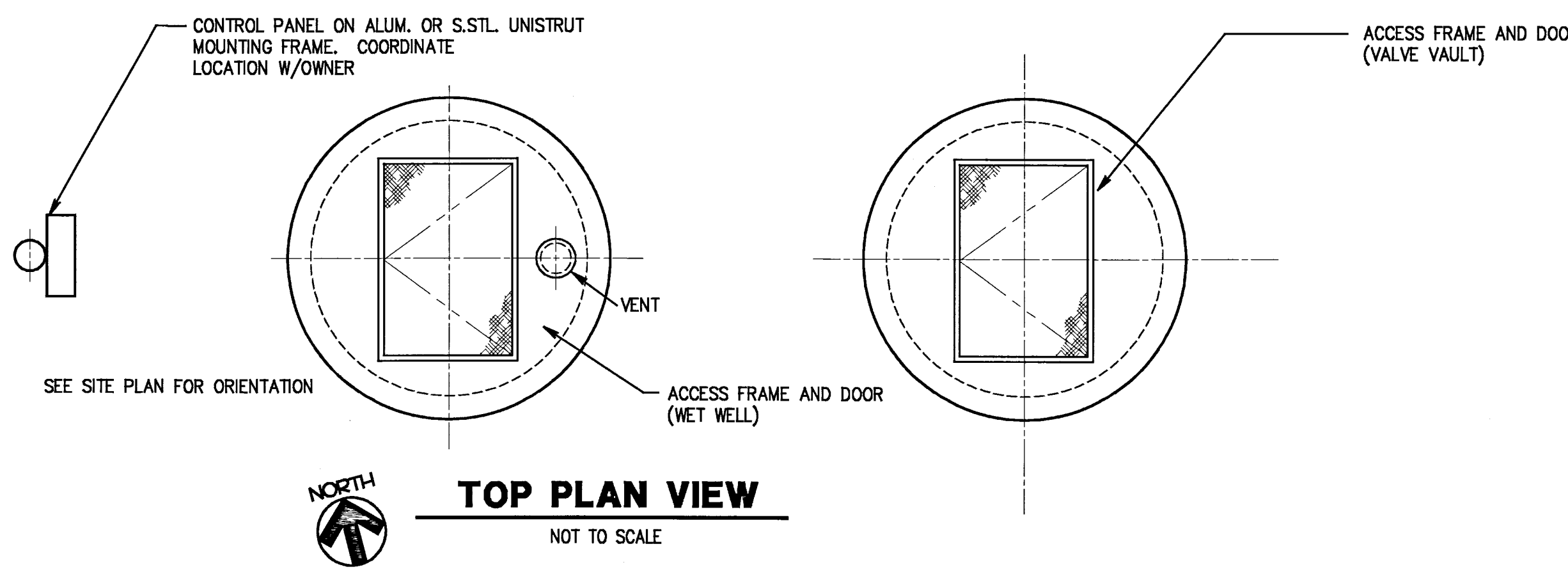
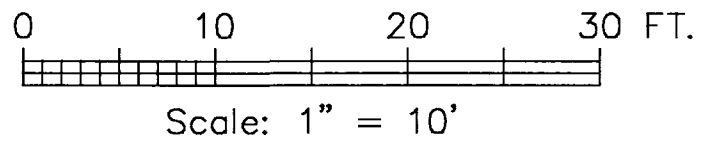


SITE PLAN
1"=10'-0"



- NOTES**
- ALL PIPE PENETRATIONS AND STATION EQUIPMENT NOT SHOWN IN TRUE SECTION. FOR ILLUSTRATION PURPOSES ONLY.
 - SLOPE VALVE VAULT FLOOR TOWARDS DRAIN PIPE WITH NON-SHRINK GROUT, 1/2" MIN. THICKNESS.
 - WALL PENETRATIONS SHALL BE LOCATED WITHIN A RISER SECTION AND NOT AT A WALL JOINT.
 - ALL PUMP STATION PIPING TO BE DUCTILE IRON UNTIL CONNECTION WITH HDPE FORCE MAIN.

ABEEL-LATINA 11/3/02 J:\14572464\WATER\FORCEMAIN.DWG-SET\2464-008.DWG 11/06/03 13:50 LITS: 1 PSLTS: 1

URS
ARCHITECTS • ENGINEERS • PLANNERS
277 W. NATIONWIDE BLVD.
COLUMBUS, OHIO 43215
(614) 464-4500 Fax: 464-0588

DATE ISSUED FOR BIDDING:				DATE ISSUED FOR CONSTRUCTION:			
ADDENDUM REVISIONS				REVISIONS			
No.	DESCRIPTION	DATE	BY	No.	DESCRIPTION	DATE	BY
DATE ISSUED FOR RECORD DRAWINGS:							

**GAMBRO HEALTHCARE
LIFT STATION & FORCE MAIN**

LIFT STATION DETAILS

DATE	October 2003
JOB No.	14572464
DRAWN	MAL
CHECKED	FJS
SCALE	NOT TO SCALE