

GENERAL NOTES (CONT.)

ITEM 614. MAINTAINING TRAFFIC

LIQUIDATED DAMAGES SHALL BE ASSESSED ON THIS PROJECT (IN THE AMOUNT OF \$1000.00 PER DAY) FOR EACH CALENDAR DAY THE ROADWAY REMAINS CLOSED TO TRAFFIC BEYOND THE SPECIFIED LIMIT.

NOTICE OF CLOSURE SIGNS, AS DETAILED IN THESE PLANS, SHALL BE ERECTED BY THE CONTRACTOR AT LEAST ONE WEEK IN ADVANCE OF THE SCHEDULED ROAD CLOSURE. THE SIGNS SHALL BE ERECTED ON THE RIGHT HAND SIDE OF THE ROAD FACING TRAFFIC. THEY SHALL BE PLACED SO AS NOT TO INTERFERE WITH THE VISIBILITY OF ANY OTHER TRAFFIC CONTROL SIGNS. ON ROADWAYS, THEY SHOULD BE ERECTED AT THE POINT OF CLOSURE.

ALL WORK AND TRAFFIC CONTROL DEVICES SHALL BE IN ACCORDANCE WITH 614 AND OTHER APPLICABLE PORTIONS OF THE SPECIFICATIONS, AS WELL AS THE OHIO MANUAL OF UNIFORM TRAFFIC CONTROL DEVICES. PAYMENT FOR ALL LABOR, EQUIPMENT AND MATERIALS SHALL BE INCLUDED IN THE LUMP SUM CONTRACT PRICE.

ITEM SPECIAL. FILL AND PLUG EXISTING CONDUIT

THIS ITEM SHALL CONSIST OF THE CONSTRUCTION OF BULKHEADS IN AN EXISTING CONDUIT AND FILLING THE AREA TO BE SEALED OFF WITH LEAN GROUT, CONTROLLED LOW STRENGTH MATERIAL, SAND OR OTHER MATERIAL APPROVED BY THE ENGINEER.

BULKHEADS SHALL BE LOCATED AT THE LIMITS OF THE AREA TO BE FILLED AS INDICATED ON THE PLANS. THE BULKHEADS SHALL CONSIST OF BRICK OR CONCRETE MASONRY WITH A MINIMUM THICKNESS OF 12 INCHES.

THE FILL MATERIAL SHALL BE PUMPED INTO PLACE, OR PLACED BY OTHER MEANS APPROVED BY THE ENGINEER, SO THAT, AFTER SETTLEMENT, AT LEAST 90 PERCENT OF THE CROSS-SECTIONAL AREA OF THE CONDUIT, FOR ITS ENTIRE LENGTH, SHALL BE FILLED. THE FOOTAGE OF FILLED AND PLUGGED CONDUIT TO BE PAID FOR SHALL BE THE ACTUAL NUMBER OF LINEAR FEET (MEASURED ALONG THE CENTERLINE OF EACH CONDUIT FROM OUTER FACE TO OUTER FACE OF BULKHEADS) FILLED AND PLUGGED AS DESCRIBED ABOVE.

THE FOOTAGE, MEASURED AS PROVIDED ABOVE, SHALL BE PAID FOR AT THE CONTRACT PRICE PER LINEAR FOOT FOR, ITEM SPECIAL, FILL AND PLUG EXISTING CONDUIT.

ITEM SPECIAL 36" CONDUIT, TYPE B (PIPE LINING)

THE UNIT BID PRICE FOR THIS ITEM WILL INCLUDE THE MATERIALS AND INSTALLATION OF PIPE LINING AND GROUTING OF THE VOID BETWEEN THE EXISTING 48" BRICK ARCH STORM SEWER AND THE 36" CONDUIT (TYPE B), AS SHOW ON THE PLANS. THE PIPE INSTALLATION AND MATERIALS SHALL CONFORM TO ODOT ITEM 603. THE GROUTING PROCESS SHALL CONFORM TO ODOT SUPPLEMENTAL SPECIFICATION 853, LOW STRENGTH MORTAR BACKFILL.

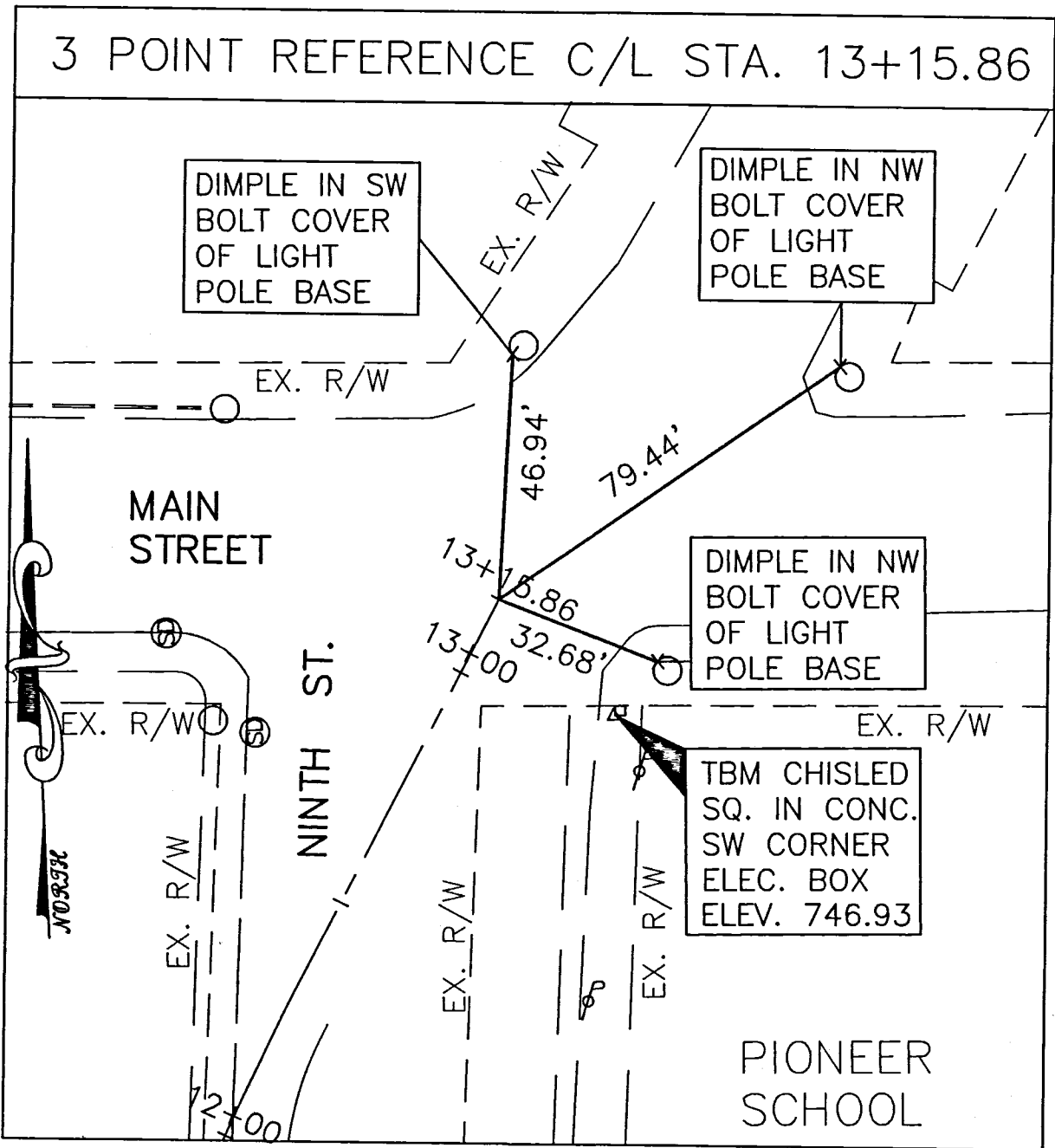
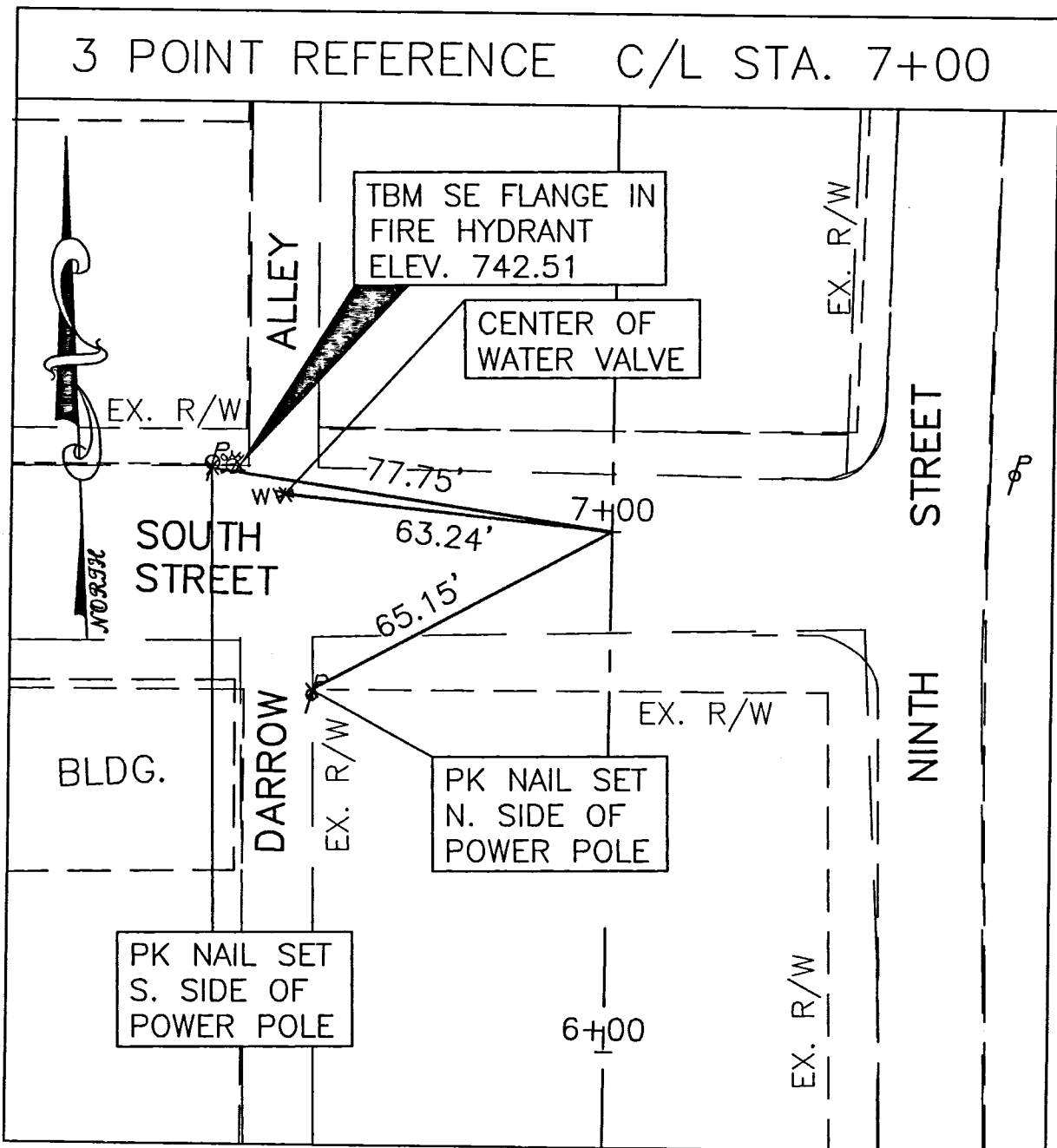
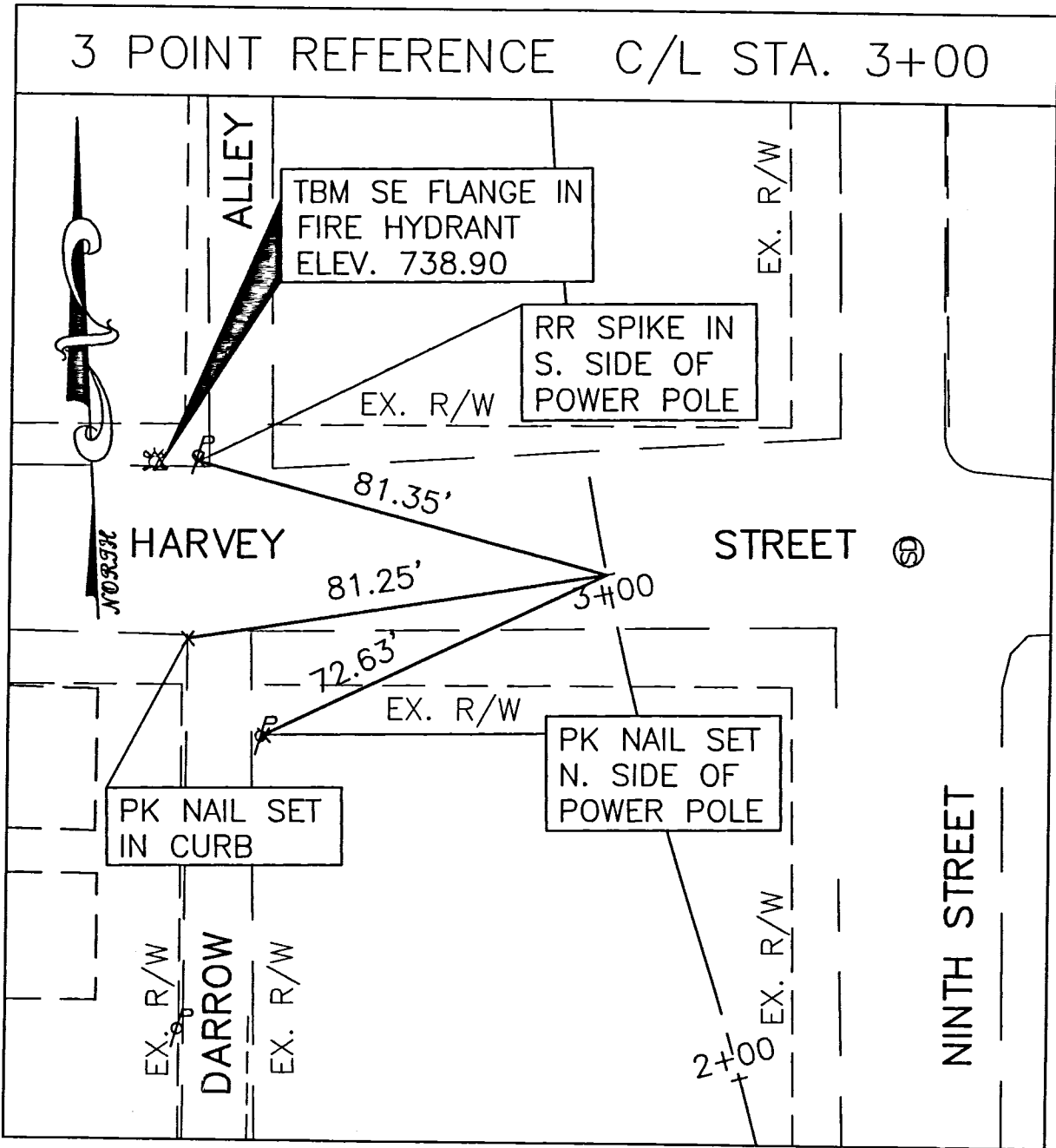
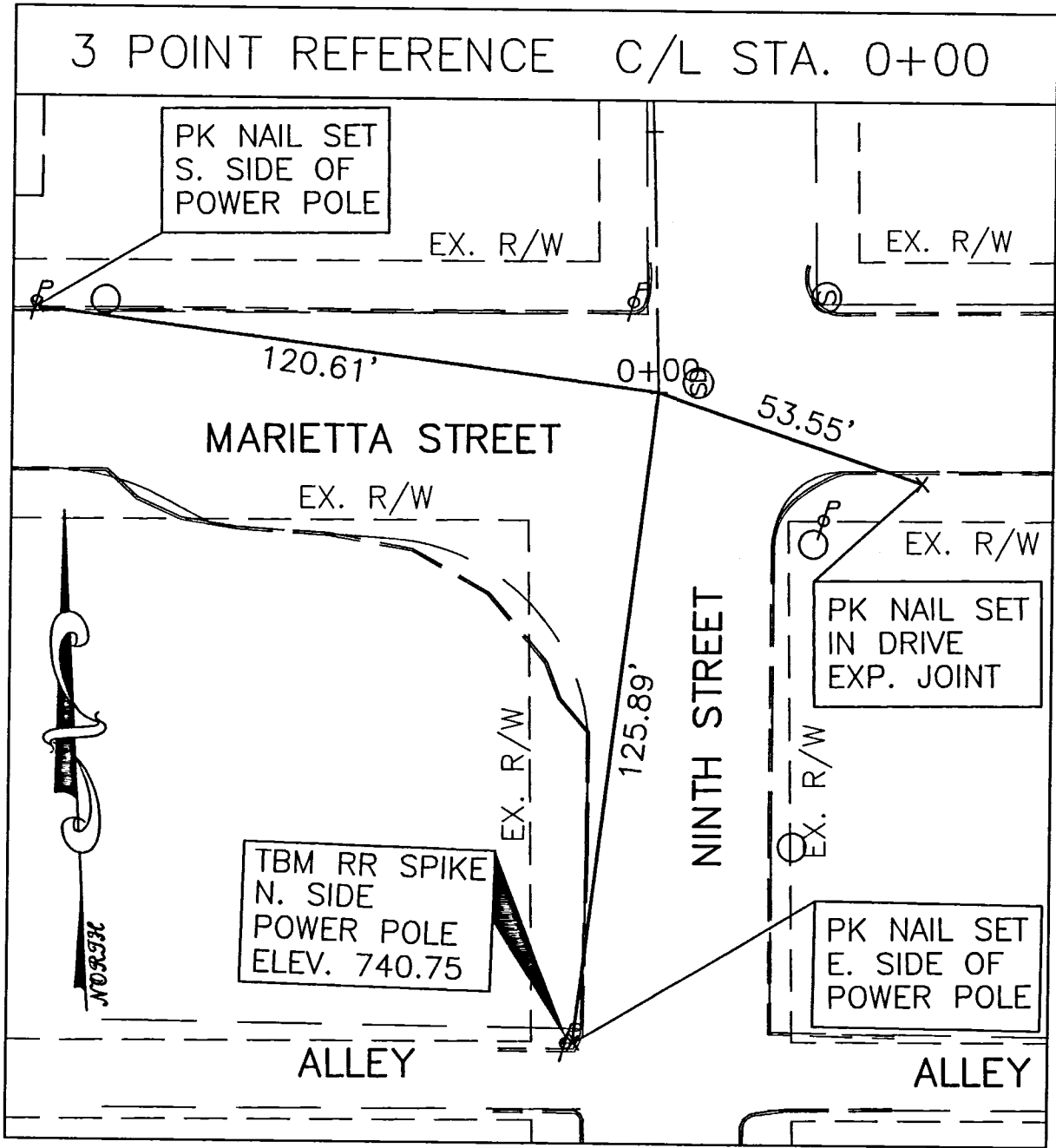
THE FOOTAGE TO BE PAID FOR SHALL BE THE ACTUAL NUMBER OF LINEAR FEET LINED AND GROUTED (MEASURED ALONG THE CENTERLINE OF EACH CONDUIT FROM CENTER TO CENTER OF MANHOLES).

THE FOOTAGE, MEASURED AS PROVIDED ABOVE, SHALL BE PAID FOR AT THE CONTRACT PRICE PER LINEAR FOOT FOR, ITEM SPECIAL, 36" CONDUIT, TYPE B (PIPE LINING)

ITEM 604. MANHOLE, CATCH BASIN, OR INLET RECONSTRUCTED TO GRADE

IN ADDITION TO ODOT ITEM 604, THE UNIT BID PRICE FOR THIS ITEM WILL INCLUDE THE CONVERSION OF THE MANHOLE TOP AT STATION 3+11.44 (70.92 R) TO A CATCH BASIN TOP AND THE CONVERSION OF THE CURB INLETS AT STATIONS 0+17.67 (32.52 R), 12+71.49 (29.81 L), AND 12+80.58 (53.74 L) TO CATCH BASIN TOPS.

3 POINT TIES



GENERAL NOTES

NINTH STREET

3  
29

GENERAL NOTES