

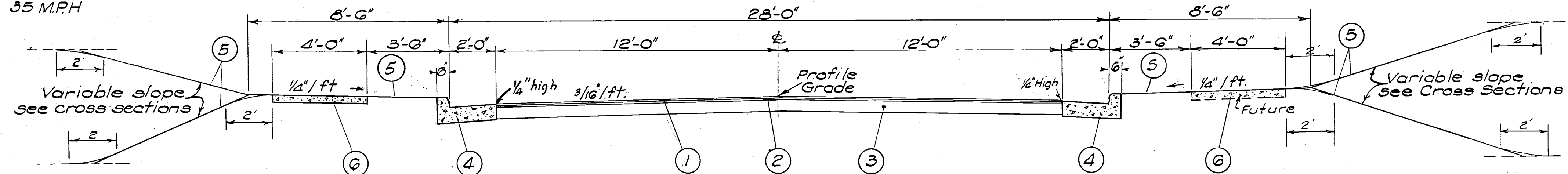
DESIGN DESIGNATION
Current ADT 700
Design Year (1990) 1750
D.H.V. (0%) 175
D (Directional Distribution) 50-50
T (percent B & C Trucks) 14%
V (Design Speed) 35 MPH

TYPICAL SECTION

TYPE 404 ON 301

FED. RD. DIVISION	STATE	PROJECT	
2	OHIO		

NINTH STREET - DRESDEN
MUSKINGUM COUNTY



GENERAL NOTES

UNDERGROUND UTILITIES: The locations of the underground utilities shown on the plans have been obtained by diligent field checks and searches of available records. It is believed that they are essentially correct, but the State of Ohio does not guarantee their accuracy or completeness.
Sanitary Sewer - Village of Dresden Water - Village of Dresden
Gas - Ohio Fuel Gas Co.

CONNECTIONS TO EXISTING PIPE: Where the plans provide for conduit to be connected to, or to cross either over or under an existing sewer, it shall be the responsibility of the Contractor to locate the existing pipe both as to line and grade before he starts to lay the proposed conduit.
Payment for all operations described above shall be included in the unit price bid for the pertinent 603 conduit items.

SANITARY FLOW INTO HIGHWAY DRAINAGE SYSTEM: This plan makes no provision for connecting nor shall the Engineer or Contractor connect any existing or new drainage into the highway drainage system when such drains carry flow from any plumbing fixtures including floor drains, sink drains or drains from livestock lots or barns or polluted water of any kind. Existing pipe carrying flow which comes within the category outlined above shall be plugged with Class C Concrete at the right of way line. Payment for said plugging shall be included in the unit price bid for Item 203 Excavation.

MAINTENANCE OF SEWER FLOW: The Contractor shall conduct his operations so as to maintain at all times sewer flows through existing facilities to remain in place and through existing facilities to be replaced until new facilities are completed and placed in use. Payment for any additional costs involved in maintaining these flows by pumping or by any other means approved by the Engineer shall be included in the unit prices bid for the respective items of 603 Conduit.

CONNECTIONS TO EXISTING PIPE: Where the plans provide for proposed conduits to be connected to, or to cross either over or under an existing sewer, it shall be the responsibility of the Contractor to locate the existing pipe both as to line and grade before he starts to lay the proposed conduit. Payment for all operations described above shall be included in the unit price bid for the pertinent 603 Conduit items.

FIELD OFFICE: The Contractor shall provide a suitable field office having a minimum of 150 sq. ft. of floor space, in addition to the requirements of Item 619 he shall provide and maintain sanitary provision as per 107.06. All the above is included in the lump sum price bid for Item 619, Field Office.

ROUNDING CORNERS: The rounded corners shown on the typical sections, apply to all cross sections even though otherwise shown on these plans.

RAILROAD CROSSING: The crown shall be worked out of the pavement on each side of the railroad beginning 50 feet from the crossing by raising the edge of pavement to meet the rail elevation. The new Asphalt courses shall be feathered to meet the railroad grades if necessary.

CONSTRUCTION LAYOUT STAKES: See note in proposal describing the work included in this lump sum pay item.

REMOVAL OF PIPE: The removal of all existing pipe drains which would normally be removed in various excavation items shall be included for payment in the unit price bid for the respective excavation items unless otherwise itemized in the plans.

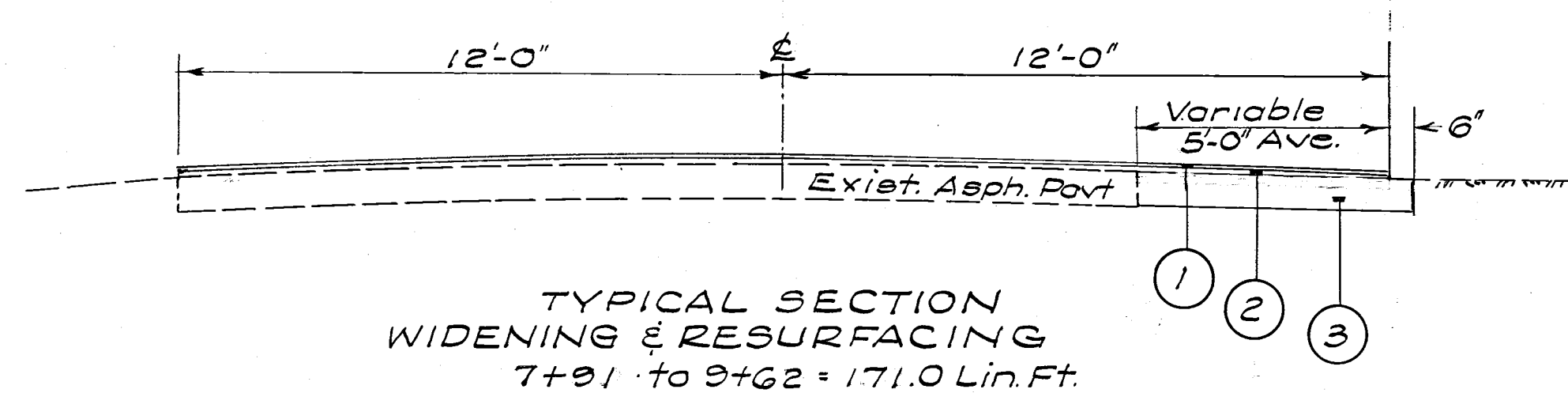
- ① Item 404 1 1/4" Asphalt Concrete (85-100)
- ② Item 403 1 1/4" Asphalt Concrete (85-100)
- ③ Item 301 6" Bituminous Aggregate Base, 702.01 (85-100) or 702.02 RT-11 or RT-12
- ④ Item 609 Combination Concrete Curb & Gutter, Type 2
- ⑤ Item 659 Seeding and Mulching (see general note)
- ⑥ Item 608 4' Concrete Walk

SCHEDULE OF STATIONING

WIDEN AND RESURFACE
7+91 to 9+62 = 171.00 Lin. Ft. (widen on Rt. only)

NEW PAVEMENT
9+70 to 10+16 = 46.00 Lin. Ft. (Intersection)
10+16 to 15+1722 = 501.22 Lin. Ft. (Full Typical)

DEDUCT FOR INTERSECTION & RAILROAD
9+49 to 9+70 = 21.00 Lin. Ft.



TYPICAL SECTION
WIDENING & RESURFACING
7+91 to 9+62 = 171.0 Lin. Ft.

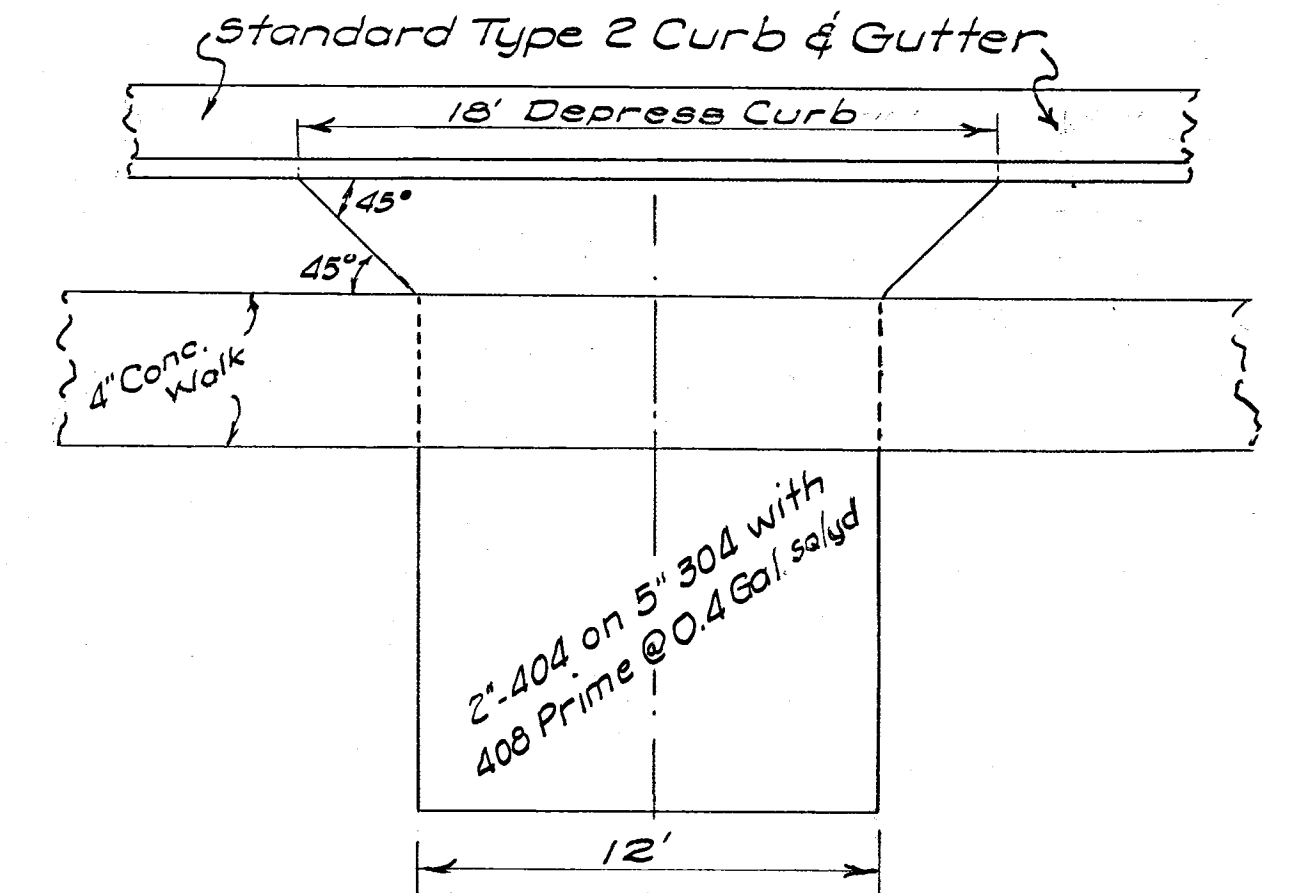
REMOVAL OF TREES AND STUMPS: All trees and stumps specifically marked for removal within the construction limits of this project shall be removed under the lump sum price bid for Item 201 Clearing and Grubbing, except that those trees for which protection and preservation work is indicated elsewhere on these plans shall not be removed. The following is an approximate estimate of the number of trees and stumps to be removed.

SIZE	No. of Trees	No. of Stumps
18"	3	1
30"	1	1

The above estimate is approximate and the State of Ohio reserves the right to order the removal of additional trees and stumps outside of the limits of construction, but within the right-of-way and/or easement lines. Payment for the removal of these additional trees or stumps shall be included in the lump sum price bid for Item 201 Clearing and Grubbing.

SEEDING: Quantities for seeding are calculated for the soil areas between the work limits, as shown on the cross sections.

UTILITIES: The following utilities are located within the limits of this project:
Electric: Ohio Power Co. 310 Cleveland Ave. SW, Canton Ohio.
Telephone: Ohio Bell Telephone Co. 840 Orchard St. Zanesville, Ohio
Gas: Ohio Fuel Gas Co. 99 N. Front St. Columbus Ohio
Water & Sewers: Village of Dresden, 9th Street, Dresden Ohio.



NOTE: Depress Curb from 6" to 2" in two feet.