

**Ohio Franklin Realty, LLC  
Official Record 2568-616  
Exhibit A-1  
Tract 34, Parcel Two  
(OPC Parcel ID 159-100)**

**2018 Auction: Tract 4  
+/- 20.019 ac.**

Situated in the State of Ohio, County of Muskingum, Township of Adams, and being a part of the Southeast Quarter of Section 18, Township 3, Range 6, United States Military Lands, and being a part of lands now owned by Ohio Franklin Realty, LLC as described in Muskingum County Official Record 2568, Page 616, Exhibit A-1, Tract 34, Parcel Two, and being more particularly described as follows:

Beginning for reference at an iron pin found on the southwest corner of the Southeast Quarter of Section 18;

thence along the west line of said Southeast Quarter and along the west line of lands now owned by John A. and Lisa R. Kreis (OR 2801-84), North 01 degrees 50 minutes 20 seconds East 790.98 feet to the principal place of beginning, passing an iron pin found at 714.78 feet;

thence along the west line of said Southeast Quarter, North 02 degrees 09 minutes 52 seconds East 1138.88 feet to a point on the centerline of Symmes Creek Road, passing an iron pin on the northeast corner of lands now owned by Samuel E. and Cevilla T. Weaver (OR 2625-488) at 837.73 feet and an iron set on the east line of lands now owned by Jason and Mary Griffin (DR 1149-209) at 1118.88 feet;

thence along the centerline of Symmes Creek Road the following sixteen courses:

- 1) South 65 degrees 05 minutes 06 seconds East 42.01 feet to a point;
- 2) South 70 degrees 56 minutes 31 seconds East 65.77 feet to a point;
- 3) South 77 degrees 24 minutes 46 seconds East 65.29 feet to a point;
- 4) South 81 degrees 51 minutes 16 seconds East 102.43 feet to a point;
- 5) South 70 degrees 49 minutes 29 seconds East 113.53 feet to a point;
- 6) South 52 degrees 01 minutes 16 seconds East 99.25 feet to a point;
- 7) South 43 degrees 56 minutes 15 seconds East 97.80 feet to a point;
- 8) South 37 degrees 36 minutes 28 seconds East 103.97 feet to a point;
- 9) South 32 degrees 17 minutes 21 seconds East 135.45 feet to a point;
- 10) South 36 degrees 33 minutes 14 seconds East 222.48 feet to a point;
- 11) South 37 degrees 37 minutes 40 seconds East 240.46 feet to a point;
- 12) South 35 degrees 05 minutes 27 seconds East 55.95 feet to a point;
- 13) South 28 degrees 33 minutes 26 seconds East 98.84 feet to a point;
- 14) South 20 degrees 06 minutes 09 seconds East 104.62 feet to a point;
- 15) South 07 degrees 07 minutes 47 seconds East 101.61 feet to a point;
- 16) South 01 degrees 39 minutes 04 seconds West 39.36 feet to a point;

thence through said Ohio Franklin Realty lands, North 88 degrees 08 minutes 55 seconds West 1104.27 feet to the principal place of beginning, passing an iron pin set at 25.00 feet, containing 20.019 acres more or less, subject to all easements and right of ways, written or implied.

Iron pins set are 5/8 inch rebar, 30 inches long, with plastic identification caps.

Bearings are based on the Ohio State Plane Coordinate System, NAD 83, South Zone, Grid South as per GPS observations made on November 7, 2017.

This description is written based on a field survey completed October 3, 2018 by Timothy H. Linn, PS, Reg. No. 7113.

Timothy H. Linn, PS  
Reg. No. 7113

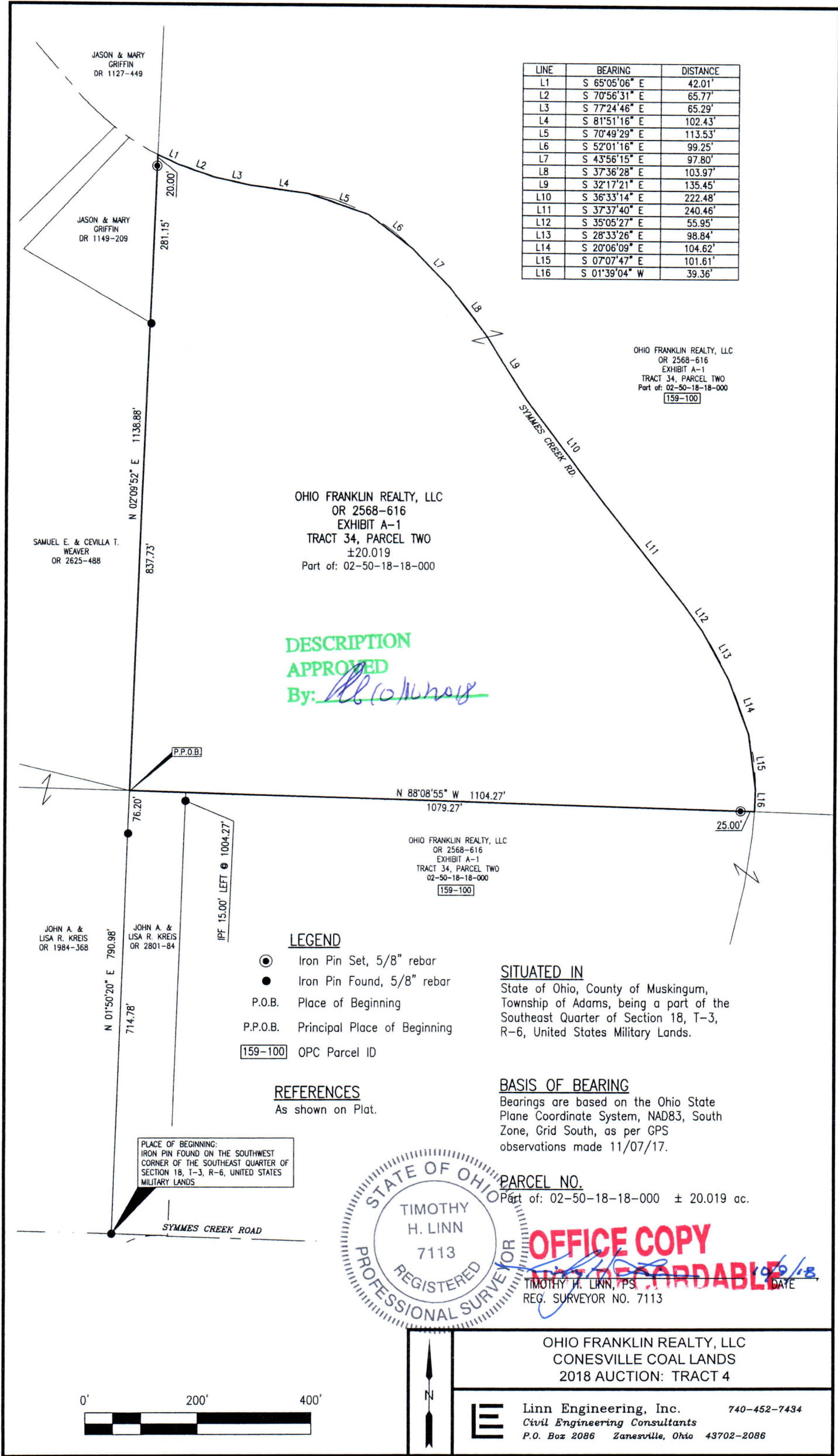


10/9/18  
Date

**Parcel Number:**

Part of: 02-50-18-18-000     +/- 20.019 acres

DESCRIPTION  
APPROVED  
By: [Signature] 10/12/18



LINE	BEARING	DISTANCE
L1	S 65°05'06" E	42.01'
L2	S 70°56'31" E	65.77'
L3	S 77°24'46" E	65.29'
L4	S 81°51'16" E	102.43'
L5	S 70°49'29" E	113.53'
L6	S 52°01'16" E	99.25'
L7	S 43°56'15" E	97.80'
L8	S 37°36'28" E	103.97'
L9	S 32°17'21" E	135.45'
L10	S 36°33'14" E	222.48'
L11	S 37°37'40" E	240.46'
L12	S 35°05'27" E	55.95'
L13	S 28°33'26" E	98.84'
L14	S 20°06'09" E	104.62'
L15	S 07°07'47" E	101.61'
L16	S 01°39'04" W	39.36'

OHIO FRANKLIN REALTY, LLC  
OR 2568-616  
EXHIBIT A-1  
TRACT 34, PARCEL TWO  
Part of: 02-50-18-18-000  
[159-100]

OHIO FRANKLIN REALTY, LLC  
OR 2568-616  
EXHIBIT A-1  
TRACT 34, PARCEL TWO  
±20.019  
Part of: 02-50-18-18-000

DESCRIPTION  
APPROVED  
By: *[Signature]*

LEGEND

- Iron Pin Set, 5/8" rebar
- Iron Pin Found, 5/8" rebar
- P.O.B. Place of Beginning
- P.P.O.B. Principal Place of Beginning
- [159-100] OPC Parcel ID

REFERENCES

As shown on Plat.

SITUATED IN

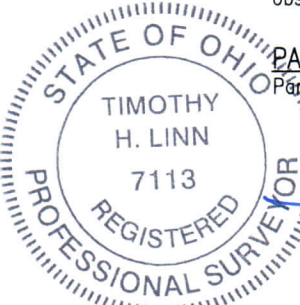
State of Ohio, County of Muskingum,  
Township of Adams, being a part of the  
Southeast Quarter of Section 18, T-3,  
R-6, United States Military Lands.

BASIS OF BEARING

Bearings are based on the Ohio State  
Plane Coordinate System, NAD83, South  
Zone, Grid South, as per GPS  
observations made 11/07/17.

PARCEL NO.

Part of: 02-50-18-18-000 ± 20.019 ac.



OFFICE COPY  
NOT RECORDABLE

TIMOTHY H. LINN, P.S.  
REG. SURVEYOR NO. 7113

OHIO FRANKLIN REALTY, LLC  
CONESVILLE COAL LANDS  
2018 AUCTION: TRACT 4



Linn Engineering, Inc. 740-452-7434  
Civil Engineering Consultants  
P.O. Box 2086 Zanesville, Ohio 43702-2086