



www.mcpeeklandsurveying.com

LLC

email: brian@mcpeeklandsurveying.com

340 Robin Hood Ln., * Zanesville, Oh 43701 * 740.704.6073

Arthur W. Barnhouse

OR 2412-879

+/- 36.848 Ac.

Situated in the State of Ohio, County of Muskingum, Township of Blue Rock, being part of Section 24, T12, R12, Congress Lands East of the Scioto River and being all of the lands now owned by Arthur W. Barnhouse (OR 2412-879) and more particularly described as follows.

Beginning for reference at a stone found at the center of Section 24, thence with the mid section line S88°43'31"E, a distance of 107.62 feet to an iron pin found at a common corner of the lands now owned by said Barnhouse and the lands now owned by Brian C. Eckroad & Donna M. Eckroad (OR 2122-523), the principal place of beginning.

thence continuing with the common line of said Eckroad and Barnhouse's lands the following two (2) courses:

1. S88°43'31"E, a distance of 419.76 feet to an iron pin set;
2. N01°46'00"E, a distance of 393.31 feet to an iron pin found on the south line of the lands now owned by Jerry L. Eckroad & Cheryl A. Eckroad (DR 981-112);

thence with the south line of said Eckroad's lands, S61°25'42"E, a distance of 876.46 feet to an iron pin found at the northwest corner of the lands owned by Steven D. Osborn (OR 2248-483);

thence with the west line of said Osborn's lands the following two (2) courses:

1. S03°08'30"W, a distance of 28.42 feet to an iron pin found;
2. S01°52'20"W, a distance of 761.58 feet to a railroad spike set in the center of Wilsonwood Road (T-69);

thence with the center line of said Wilsonwood Road the following nine (9) courses:

1. thence with a curve turning to the right with an arc length of 316.56 feet, with a radius of 306.74 feet, with a chord bearing of S42°40'23"W, with a chord length of 302.70 feet to a point;
2. S72°55'56"W, a distance of 341.73 feet to a point;
3. thence with a curve turning to the right with an arc length of 110.68 feet, with a radius of 903.19 feet, with a chord bearing of S79°33'38"W, with a chord length of 110.61 feet to a point;
4. thence with a reverse curve turning to the left with an arc length of 141.40 feet, with a radius of 609.35 feet, with a chord bearing of S70°07'48"W, with a chord length of 141.08 feet to a point;
5. thence with a reverse curve turning to the right with an arc length of 150.27 feet, with a radius of 409.05 feet, with a chord bearing of S77°02'17"W, with a chord length of 149.43 feet to a point;
6. S87°18'10"W, a distance of 166.63 feet to a point;
7. thence with a curve turning to the right with an arc length of 141.47 feet, with a radius of 270.22 feet, with a chord bearing of N76°19'26"W, with a chord length of 139.86 feet to a point;
8. N54°32'54"W, a distance of 111.56 feet to a point;

9. thence with a curve turning to the left with an arc length of 84.58 feet, with a radius of 189.61 feet, with a chord bearing of N65°22'16"W, with a chord length of 83.88 feet to a point at the Southeast corner to the lands owned by said Brian C. Eckroad & Donna M. Eckroad;
- thence with the common line of said Eckroad and Barnhouse's lands the following four (4) courses:
1. N34°11'21"E, a distance of 232.84 feet to and iron pin found, passing an iron pin found at 32.02 feet;
 2. N10°06'05"W, a distance of 200.13 feet to an iron pin found;
 3. N00°19'55"E, a distance of 213.07 feet to an iron pin found;
 4. N12°34'25"E, a distance of 534.55 feet to the point of beginning, containing a total of 36.848 acres more or less, subject to all legal highways and easements of record.

All bearings described herein are based on the Ohio State Plane Grid Coordinates, NAD83, Ohio South per GPS Observation.

All iron pins set are 5/8 inch by 30 inch steel rebar with plastic identification caps marked MCPEEK PS8517.

The above described 36.848 acre tract is based on a field survey made by McPeek Land Surveying, LLC on March 22, 2018.

OFFICE COPY
NOT RECORDABLE
Brian Kelly McPeek, PS 8517

3/25/18

Date



Parcel No. All of: 06-60-24-08-000 (+/- 36.848 ac.)

DESCRIPTION

APPROVED

By:

BK McPeek 3/25/18

SITUATED IN

The State of Ohio, County of Muskingum
Township of Blue Rock, part of Section 24,
T12, R12, Congress Lands East of the Scioto River.

DESCRIPTION

APPROVED

By: *[Signature]*

ReSurvey

LEGEND

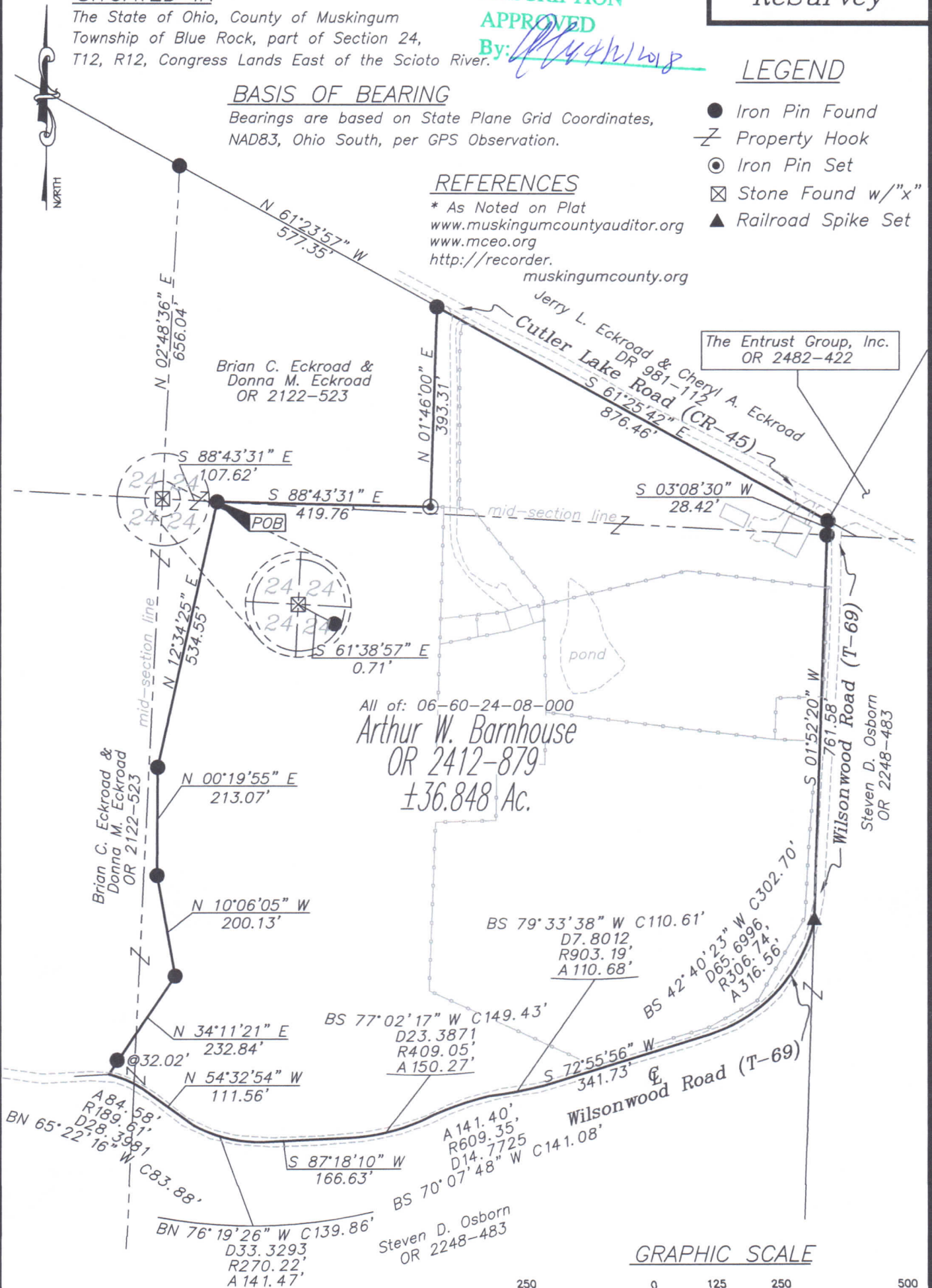
- Iron Pin Found
- ⌵ Property Hook
- ⊙ Iron Pin Set
- ⊠ Stone Found w/"x"
- ▲ Railroad Spike Set

BASIS OF BEARING

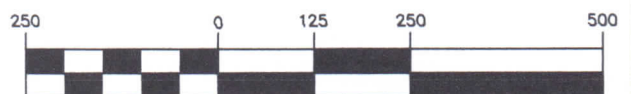
Bearings are based on State Plane Grid Coordinates,
NAD83, Ohio South, per GPS Observation.

REFERENCES

* As Noted on Plat
www.muskingumcountyauditor.org
www.mceo.org
<http://recorder.muskingumcounty.org>



GRAPHIC SCALE



(IN FEET)

1 inch = 250 ft.

This plat was prepared by McPeck Land Surveying, LLC
in accordance with Chapter 4733-37 of the Administrative Code,
and is intended to be used for the legal transfer of the property
described and does not intend to describe all or any easements of
record, nor encroachments unless otherwise intended.

OFFICE COPY

NOT RECORDED
Date 3/28/18
Reg. Surveyor No. 8517



**MCPECK
LAND
SURVEYING**

LLC
www.mcpecklandsurveying.com
email: brian@mcpecklandsurveying.com
340 Robin Hood Ln., * Zanesville, Oh 43701 * 740.704.6073