

# ALAN DONAKER SURVEYING

**Alan Donaker, P.S.**

**19849 TR 383**

**Walhonding, OH 43843**

**Phone: (740) 327-7001**

**Fax: (740) 327-6101**

Being 190.739 acres, more or less, in Section 27, Township 12 North, Range 12 West, The Congress Lands East of Scioto River, in the Township of Blue Rock, in the County of Muskingum, in the State of Ohio, conveyed to Alvin L. Fritter and Richard J. Hughes, DR 1631-424 (all), Parcel No. 06-06-80-27-06 (all) 113.013 Ac. +/-, and Parcel No. 06-06-80-27-07 (all) 77.726 Ac. +/-, and more particularly described as follows:

Commencing at a 5/8" rebar found at the Southeast corner of the Northeast Quarter of Section 28, said rebar being the TRUE POINT OF BEGINNING;

thence, with the East line of Section 28 and the property line of Dana J. and Beverly L. Johnson, DR 1122-114, the following two (2) courses;

1. thence, N. 00° 10' 43" E. a distance of 1733.17' to a 5/8" rebar found;
2. thence, N. 00° 10' 43" E. a distance of 18.90' to a point in the centerline of State Route 376, Rockville Road;

thence, with the centerline of State Route 376, Rockville Road, the following twenty-six (26) courses;

1. thence, N. 73° 49' 59" E. a distance of 20.95' to a point;
2. thence, N. 80° 47' 29" E. a distance of 136.27' to a point;
3. thence, N. 75° 50' 26" E. a distance of 70.46' to a point;
4. thence, N. 84° 44' 40" E. a distance of 97.24' to a point;
5. thence, N. 57° 06' 21" E. a distance of 280.62' to a point;
6. thence, N. 60° 40' 13" E. a distance of 144.31' to a point;
7. thence, N. 65° 10' 19" E. a distance of 139.94' to a point;
8. thence, N. 71° 25' 31" E. a distance of 147.14' to a point;
9. thence, N. 80° 18' 28" E. a distance of 70.13' to a point;
10. thence, N. 86° 38' 06" E. a distance of 105.87' to a point;
11. thence, S. 85° 20' 30" E. a distance of 68.15' to a point;
12. thence, S. 74° 34' 28" E. a distance of 63.64' to a point;
13. thence, S. 64° 01' 50" E. a distance of 54.31' to a point;
14. thence, S. 54° 11' 11" E. a distance of 62.58' to a point;
15. thence, S. 46° 56' 07" E. a distance of 159.07' to a point;
16. thence, S. 50° 18' 08" E. a distance of 85.56' to a point;
17. thence, S. 58° 18' 57" E. a distance of 68.00' to a point;
18. thence, S. 66° 11' 04" E. a distance of 64.68' to a point;
19. thence, S. 71° 20' 13" E. a distance of 69.89' to a point;
20. thence, S. 73° 50' 18" E. a distance of 214.64' to a point;
21. thence, S. 70° 41' 35" E. a distance of 123.17' to a point;



This property is subject to all easements, rights-of-way or restrictions, whether recorded or implied.

**ALAN DONAKER SURVEYING**  
 19849 TR 383  
 Walhonding, OH 43843  
 Telephone: (740) 327-7001  
 Fax: (740) 327-6101

Pertinent Documents: Tax Map  
 DR: 1631-424, 1122-114, 1129-655,  
 1140-342, 1047-446, 1095-17,  
 648-202, 568-471

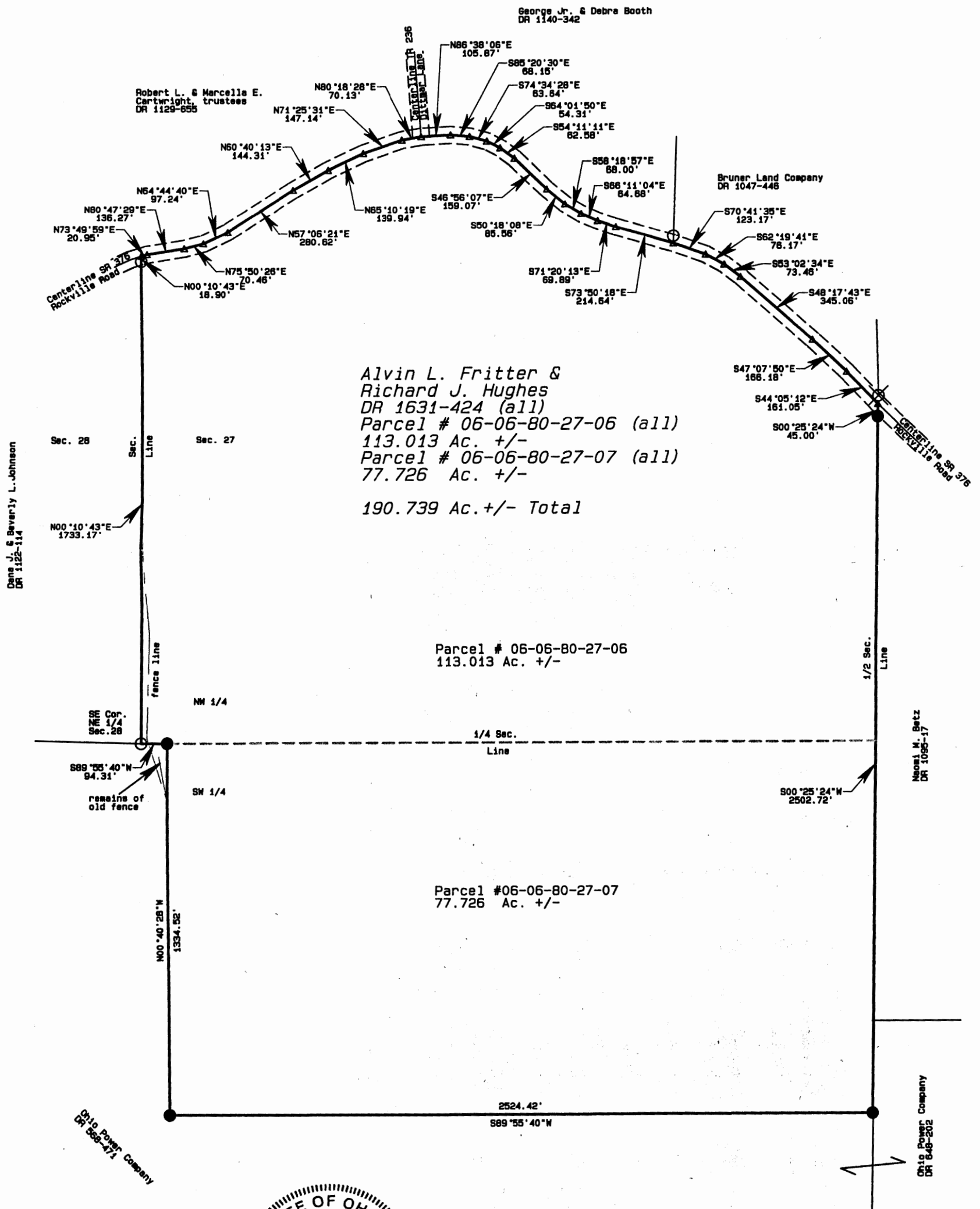
Bearings are based on  
 DR 1140-342 and are for  
 angular calculations only

Surveys By: Kevin Cannon,  
 Roger W. Claus

06-80-27-06  
 7330 ROCKVILLE RD.



- All 5/8" steel pins set are 30" long with plastic cap marked "AMD 8050"
- ⊗ 3/4" pipe fd.
- 5/8" rebar fd.
- ▲ point



Alvin L. Fritter &  
 Richard J. Hughes  
 DR 1631-424 (all)  
 Parcel # 06-06-80-27-06 (all)  
 113.013 Ac. +/-  
 Parcel # 06-06-80-27-07 (all)  
 77.726 Ac. +/-  
 190.739 Ac. +/- Total

Parcel # 06-06-80-27-06  
 113.013 Ac. +/-

Parcel # 06-06-80-27-07  
 77.726 Ac. +/-

DESCRIPTION APPROVED  
 FOR AUDITOR'S TRANSFER

BY *[Signature]*

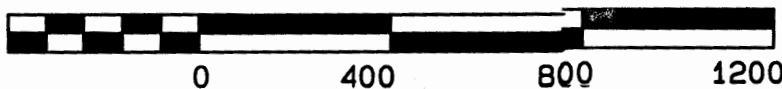
2-5-2002



**OFFICE COPY  
 NOT RECORDABLE**

I, Alan Donaker, 8050, hereby certify this map represents a boundary survey pursuant to Chapter 4733.37 Ohio Administrative Code and to be correct to the best of my knowledge and belief.

GRAPHIC SCALE 1" = 400'



Alvin L. Fritter & Richard J. Hughes DR 1631-424  
 190.739 Ac. +/-, Sec. 27,  
 T12N, R12W The Congress  
 Lands East of Scioto River  
 Blue Rock Township  
 Muskingum County, Ohio  
 Date: January 2002

22. thence, S. 62° 19' 41" E. a distance of 76.17' to a point;
23. thence, S. 53° 02' 34" E. a distance of 73.46' to a point;
24. thence, S. 48° 17' 43" E. a distance of 345.06' to a point;
25. thence, S. 47° 07' 50" E. a distance of 166.18' to a point;
26. thence, S. 44° 05' 12" E. a distance of 161.05' to a point;

thence, with the property lines of Naomi M. Betz, DR 1095-17, and Ohio Power Company, DR 648-202, the following two (2) courses;

1. thence, S. 00° 25' 24" W. a distance of 45.00' to a 5/8" steel pin set;
2. thence, S. 00° 25' 24" W. a distance of 2502.72' to a 5/8" steel pin set;

thence, with the property line of Ohio Power Company, DR 568-471, the following three (3) courses;

1. thence, S. 89° 55' 40" W. a distance of 2524.42' to a 5/8" steel pin set;
2. thence, N. 00° 40' 28" W. a distance of 1334.52' to a 5/8" steel pin set;
3. thence, S. 89° 55' 40" W. a distance of 94.31' to the TRUE POINT OF BEGINNING, containing 190.739 acres, more or less, including public road right-of-way and is subject to all easements, rights-of-way, or restrictions, whether recorded or implied.

Bearings are based on DR 1140-342 and are for angular calculations only.

All 5/8" steel pins set are 30" long with plastic cap marked "AMD 8050".

Pertinent Documents: Tax Map;

DR: 1631-424, 1122-114, 1129-655, 1140-342, 1047-446, 1095-17, 648-202, 568-471

Surveys by: Kevin Cannon, Roger W. Clause

Description and plat by Alan Donaker, Professional Surveyor, #8050, from a survey of the premises in the month of January, in the year of our Lord Two Thousand two.

**OFFICE COPY  
NOT RECORDABLE**

DESCRIPTION APPROVED  
FOR AUDITOR'S TRANSFER  
BY                       
Z-J-2002

This property is subject to all easements, rights-of-way or restrictions, whether recorded or implied.

**ALAN DONAKER SURVEYING**  
 19849 TR 383  
 Walhonding, OH 43843  
 Telephone: (740) 327-7001  
 Fax: (740) 327-6101

Pertinent Documents: Tax Map  
 DR: 1631-424, 1122-114, 1129-655,  
 1140-342, 1047-446, 1095-17,  
 648-202, 568-471

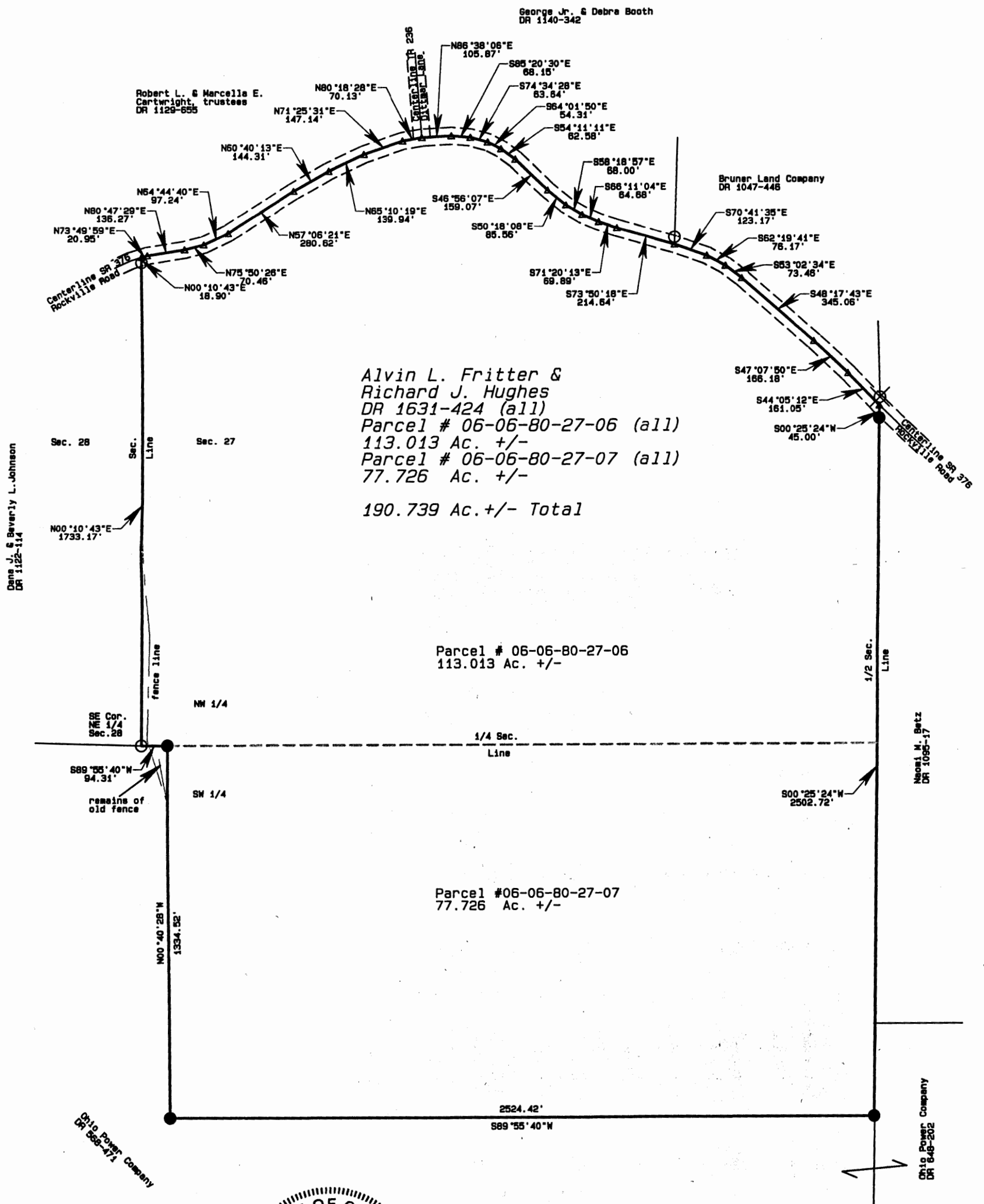
Bearings are based on  
 DR 1140-342 and are for  
 angular calculations only

Surveys By: Kevin Cannon,  
 Roger W. Claus

06-80-27-06  
 7330 ROCKVILLE RD.



- All 5/8" steel pins set are 30" long with plastic cap marked "AMD 8050"
- ⊗ 3/4" pipe fd.
- 5/8" rebar fd.
- ▲ point



Alvin L. Fritter &  
 Richard J. Hughes  
 DR 1631-424 (all)  
 Parcel # 06-06-80-27-06 (all)  
 113.013 Ac. +/-  
 Parcel # 06-06-80-27-07 (all)  
 77.726 Ac. +/-  
 190.739 Ac. +/- Total

Parcel # 06-06-80-27-06  
 113.013 Ac. +/-

Parcel # 06-06-80-27-07  
 77.726 Ac. +/-

DESCRIPTION APPROVED  
 FOR AUDITOR'S TRANSFER

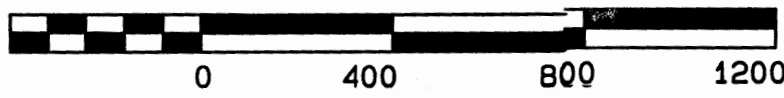
BY *[Signature]*  
 2-7-2002



**OFFICE COPY  
 NOT RECORDABLE**

I, Alan Donaker, Registered Professional Surveyor No. 8050, hereby certify this map represents a boundary survey pursuant to Chapter 4733.37 Ohio Administrative Code and to be correct to the best of my knowledge and belief.

GRAPHIC SCALE 1" = 400'



Alvin L. Fritter & Richard J. Hughes DR 1631-424  
 190.739 Ac. +/-, Sec. 27,  
 T12N, R12W The Congress  
 Lands East of Scioto River  
 Blue Rock Township  
 Muskingum County, Ohio  
 Date: January 2002