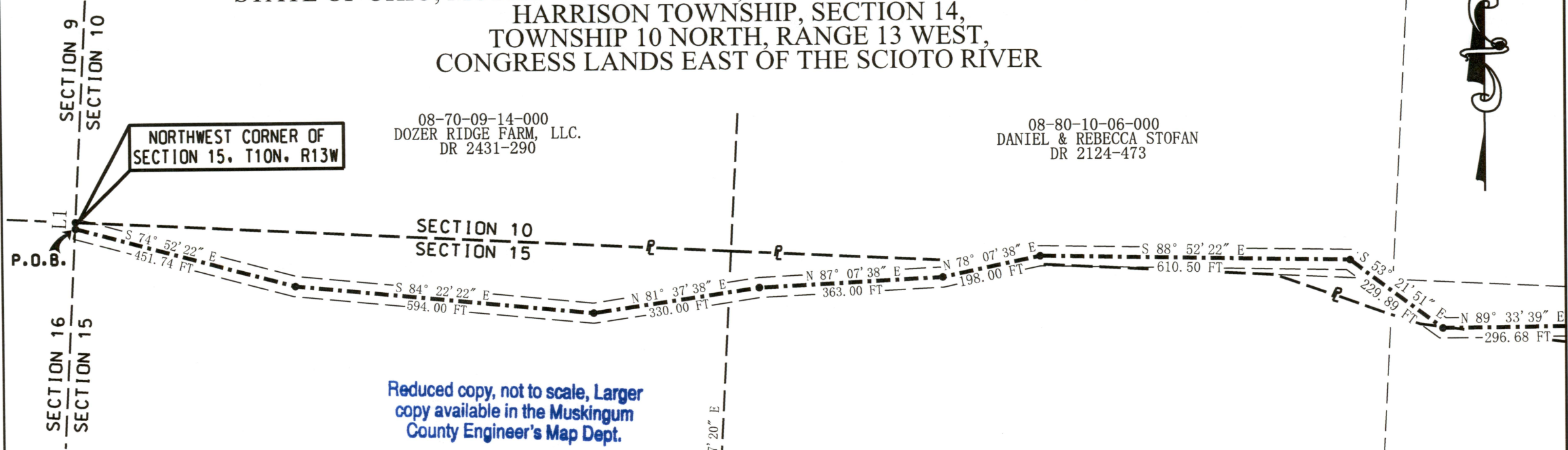


ROAD VACATION PLAT FOR A PORTION OF HARSH ROAD (40' WIDE)

STATE OF OHIO, MUSKINGUM COUNTY, BRUSH CREEK TOWNSHIP, SECTION 15

HARRISON TOWNSHIP, SECTION 14,
TOWNSHIP 10 NORTH, RANGE 13 WEST,
CONGRESS LANDS EAST OF THE SCIOTO RIVER

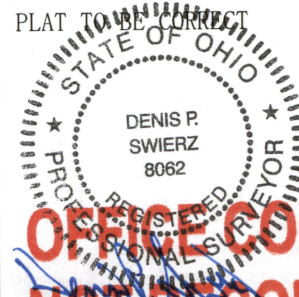


LINE TABLE

NUMBER	DIRECTION	DISTANCE
L1	S 03° 49' 27" W	10.59 FT

MUSKINGUM COUNTY ENGINEER'S OFFICE
155 REHL ROAD
ZANESVILLE, OHIO 43701
(740) 454-0155

I HERE BY CERTIFY THIS PLAT TO BE CORRECT



DENIS P. SWIERZ
PS# 8062
DATE 5/09/19

MUSKINGUM CO. ENGINEER'S OFFICE
155 REHL ROAD
ZANESVILLE, OHIO 43701
(740) 454-0155

DESCRIPTION

APPROVED

By: *[Signature]*

200 0 200



Scale: 1" = 200'

LEGEND

• POINT

ROAD TO BE VACATED INSIDE THE FOLLOWING PARCEL #S:

PART OF PARCEL NO.:	08-95-15-06-000	±1.20 ACRES
PART OF PARCEL NO.:	08-80-10-06-000	±0.71 ACRES
PART OF PARCEL NO.:	08-95-15-04-000	±1.00 ACRES
PART OF PARCEL NO.:	08-80-10-09-000	±0.74 ACRES
PART OF PARCEL NO.:	08-95-15-01-000	±0.36 ACRES
PART OF PARCEL NO.:	08-95-15-02-000	±1.27 ACRES
PART OF PARCEL NO.:	20-90-14-08-000	±0.35 ACRES
TOTAL		± 5.63 ACRES

BASIS OF BEARING:

BEARINGS ARE ASSUMED BEING BASED ON THE EAST LINE OF THE WEST HALF OF THE NORTH-WEST QUARTER OF SECTION 15 BEING NORTH 03 DEGREES 27 MINUTES 20 SECONDS EAST.

PERTINENT DOCUMENTS AND SURVEYS USED:

1. DEED REFERENCES SHOWN
2. TAX MAPS
3. SURVEY RECORDS FOUND IN THE MUSKINGUM COUNTY ENGINEERS OFFICE, ZANESVILLE, OHIO.